

1. Disassembly Procedures:

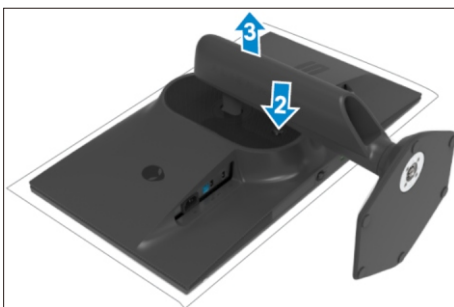
S1 Turn off power..



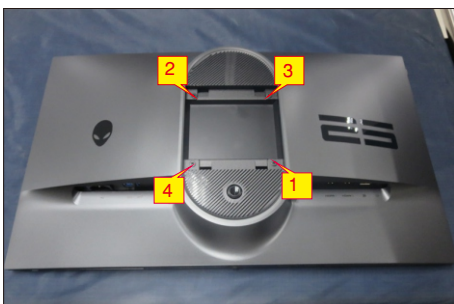
S2 Unplug external cables(power cable and video cable) from the monitor.



S3 Remove stand from the product.(Press the stand release button, lift the stand up and away from the monitor)

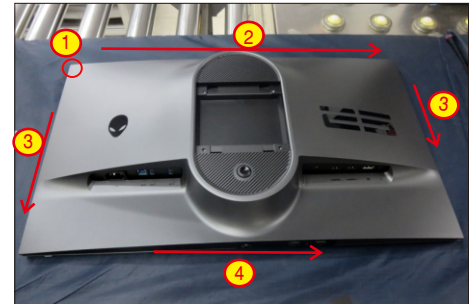


S4 Use a Philips-head screwdriver to remove 4pcs screws for unlocking mechanisms.
(No.1~4 screw size=M4x11; Torque=11±1kgfxcmm)



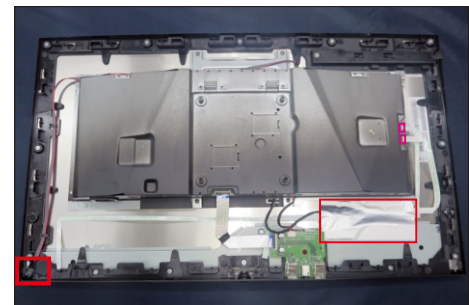
Wedge your fingers between the rear cover and the middle bezel on the corners of the top side of the monitor to release the rear cover, then use one hand to press the middle bezel, the other hand to pull up carefully the rear cover in order of arrow preference for unlocking mechanisms of rear cover.

S5



Remove the rear cover, then tear off 1pcs aluminum foil for uncovering the EDP connector, then disconnect power key cable and joystick key cable away from the connectors of the board. Tear off 1pcs shading mylar, then disconnect the panel lamp connector, then release the cable from the hooks of the middle frame and bracket.

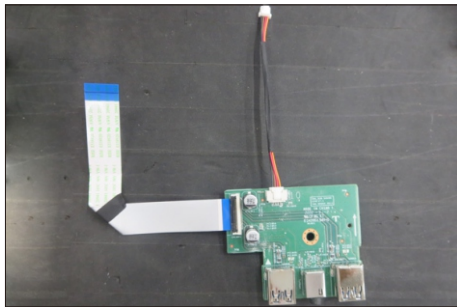
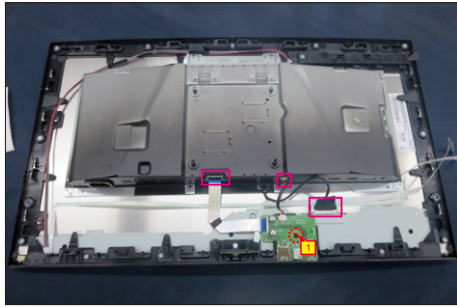
S6



S7

Disconnect EDP cable from the panel connector, then disconnect two USB cable from the connector of the board. Use a Philips-head screwdriver to remove one screw for unlocking the USB sub board unit, then release the USB sub board unit and put it aside.

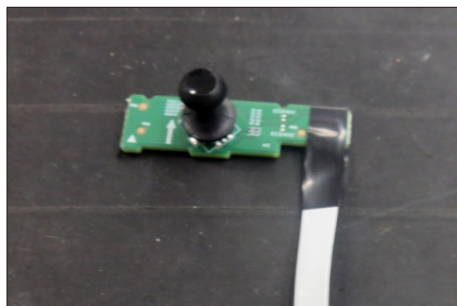
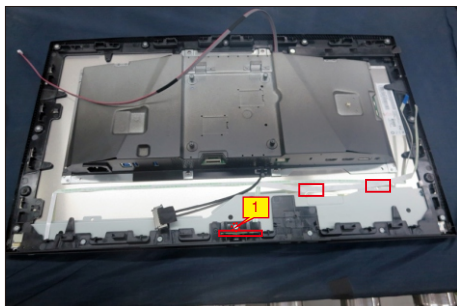
(No.1 screw size=M3x6, Torque=4±0.5kgfxcn)



S8

Use a Philips-head screwdriver to remove 1pcs screw for unlocking the joystick board with middle frame, then release the key cable by tearing off 2pcs tapes, then release the joystick board from the hooks of the middle frame.

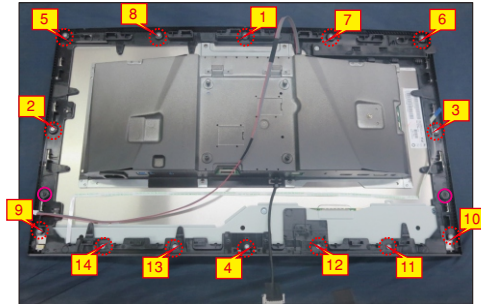
(No.1 Screw size= M3x6, Torque=2~2.5kgfxcn)



S9

Use a Philips-head screwdriver to remove 14pcs screws for unlocking the middle bezel with the panel module, then tear off 2pcs shading mylar tape for uncovering the two screws holes of the middle frame.

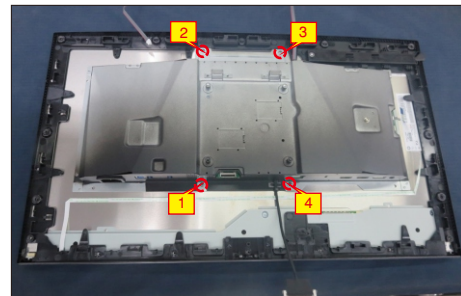
(No.1~14 Screw size= M3x5, Torque=3~4kgfxcn)



S10

Use a Philips-head screwdriver to remove 4pcs screws for unlocking the bracket with the panel.

(No.1~4 Screw size= M3x2.6, Torque=3~4kgfxcn)



S11

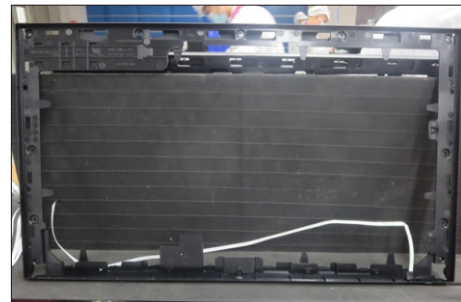
Tear off 2pcs tapes on the back of the power key cable, then lift up the middle bezel and remove the middle bezel.

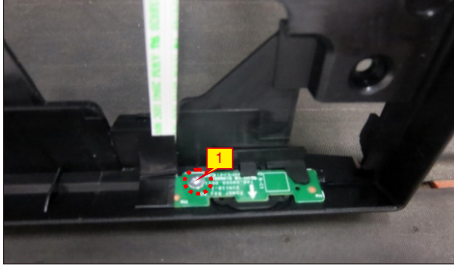


S12

Put the middle frame into a fixture jip, then tear off the mylar tape, and then use a Philips-head screwdriver to remove 1pcs screw for unlocking the power key board with the middle bezel.

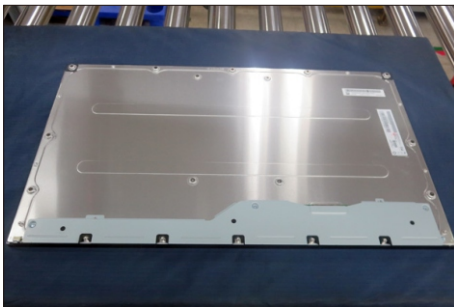
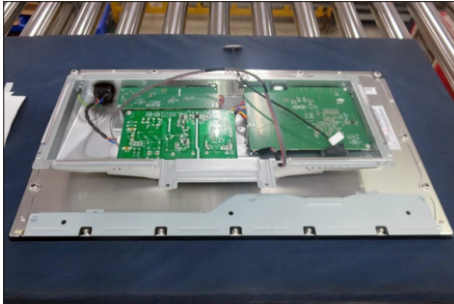
(No.1 Screw size= M2x2.4, Torque=0.8±0.2kgfxcn)





S13

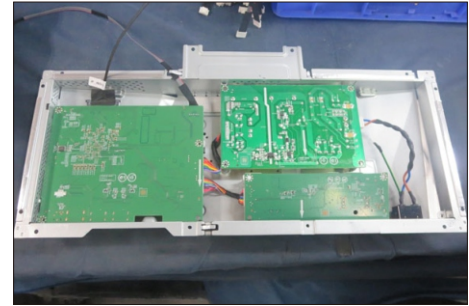
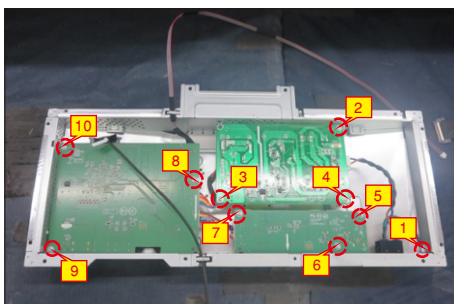
Lift up the bracket chassis module and put the bracket chassis module on a protective cushion.



S14

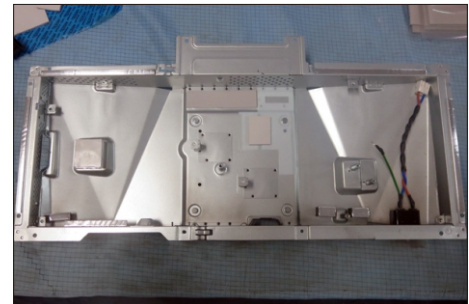
Use a Philips-head screwdriver to remove 10pcs screws for unlocking the power board, interface board and main USB board with the bracket, then release the EDP cable and panel lamp cable from the hooks of the bracket chassis module.

(No.1 screw size=M4x8, Torque=6±0.5kgfxcn;
No.2~10 screw size=M3x7.5, Torque=6±0.5kgfxcn)



S15

Remove the circuit boards from the bracket chassis module carefully, and then disconnect all of the cables.

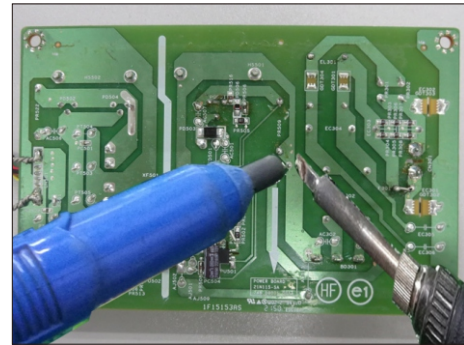


S17

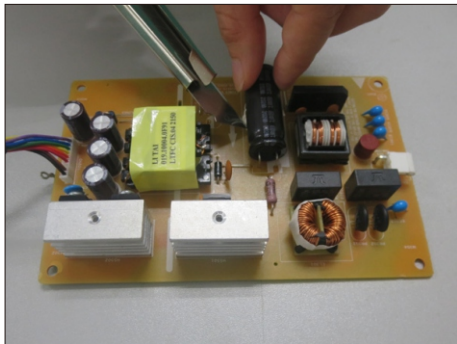
Remove electrolyte capacitors (red mark) from printed circuit boards.



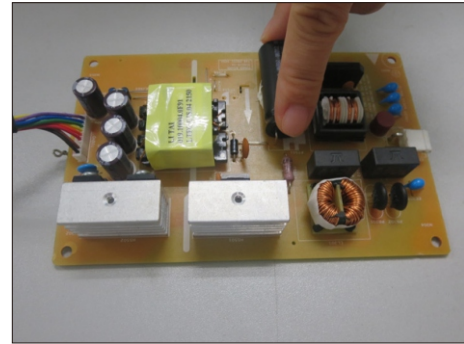
S17-4 Take out bulk cap. pin solder with soldering iron and absorber.



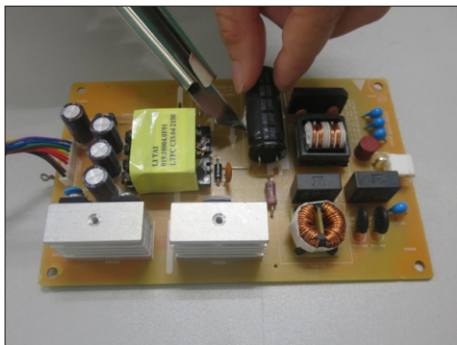
S17-1 Cut the glue between bulk cap. and PCB with a knife.



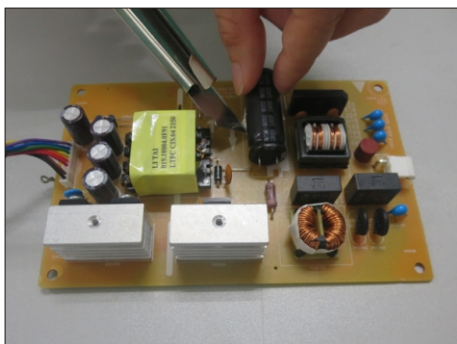
S17-5 Lift the bulk cap. up and away from the PCB.



S17-2 Ensure cutting path within the glue, don't touch bulk cap. or PCB.



S17-3 Cut into the bottom of bulk cap. and pullit up carefully.



2. Product material information

The following substances, preparations, or components should be disposed of or recovered separately from other WEEE in compliance with Article 4 of EU Council Directive 75/442/EEC.

Capacitors / condensers (containing PCB/PCT)	No used
Mercury containing components	No used
Batteries	No used
Printed circuit boards (with a surface greater than 10 square cm)	Product has printed circuit boards (with a surface greater than 10 square cm)
Component contain toner, ink and liquids	No used
Plastic containing BFR	No used
Component and waste contain asbestos	No used
CRT	No used
Component contain CFC, HCFC, HFC and HC	No used
Gas discharge lamps	No used
LCD display > 100 cm ²	Product has an LCD greater than 100 cm ²
External electric cable	Product has external cables
Component contain refractory ceramic fibers	No used
Component contain radio-active substances	No used
Electrolyte capacitors (height > 25mm, diameter > 25mm)	Product has electrolyte capacitors (height > 25mm, diameter > 25mm)

3. Tools Required

List the type and size of the tools that would typically can be used to disassemble the product to a point where components and materials requiring selective treatment can be removed.

Tool Description:

- Screwdriver (Phillip head) #1
- Screwdriver (Phillip head) #2
- Penknife
- Soldering iron and absorber