



Application Note

RS232 SERIAL INTERFACE COMMUNICATION PROTOCOL

NOTE: The commands provided in this document are a standard set.

Functionality is guaranteed **only** for the commands/functions which are also available in the OSD Menu of the display.

Functionality of commands listed in this document but not available in the OSD Menu cannot be guaranteed.

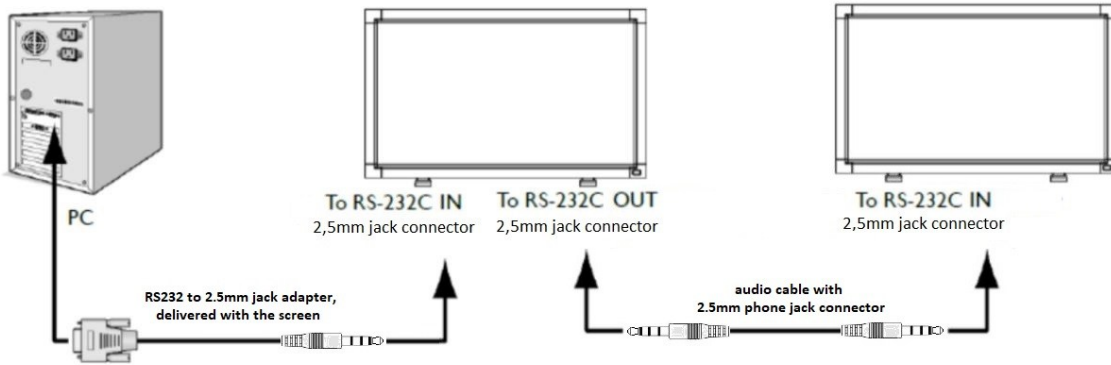
Applicable models:

LE3241S / LH3241S
LH4341(UH)S / LH4341(UH)S
LE5041UHS / LH5041UHS
LE5541UHS / LH5541UHS
LH6541UHS

I. INTRODUCTION

1.1 Purpose

The purpose of this document is to explain in detail the commands and steps that can be used to control a display via RS232C.



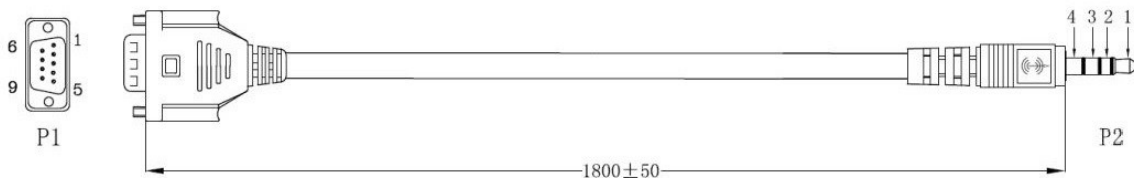
1.2 Definitions, Abbreviations and Acronyms

PBS	Professional Business Solutions
RC	Remote Control
ACK	Acknowledge
NACK	Not Acknowledge
NAV	Not Available
ID	Identification
0xXX	Hexadecimal notation

2. COMMAND PACKET FORMAT

2.1 Physical Specifications

1. Baud Rate : 9600
2. Data bits: 8
3. Parity : None
4. Stop Bit : 1
5. Flow Control : None
6. The pin assignments for DB9 to jack adapter

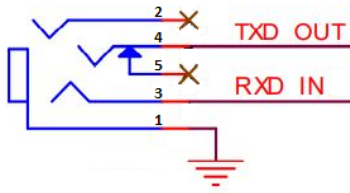


WIRING TABLE

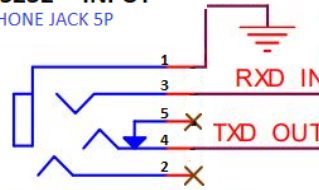
P1	WIRING COLOR	P2	
2	RED 红色	1	TXD
3	BLUE 蓝色	2	RXD
9	BLACK 黑色	3	--
5	DRAIN 地线	4	GDN

The pin assignments for monitor RS232 Input and Output port

RS232 -- OUTPUT
PHONE JACK 5P



RS232 -- INPUT
PHONE JACK 5P



Digital Signage displays use RXD, TXD and GND pins for RS-232C control.

2.2 Communication Procedure

Control commands can be sent from a host controller via the RS232 connection. A new command should not be sent until the previous command is acknowledged. However, if a response is not received within 500 milliseconds a retry may be triggered. Every valid command receives an ACK. A command that is valid but not supported in the current implementation will be responded to with a NAV (Not Available). If the command buffer is corrupt (transmission errors) the command will be responded to with a NACK. The display operates according to the received command. If the command is a valid "Get" command, the display responds with the requested info. If the command is a valid "Set" command allowed, the display performs the requested operation.

Figure1 and Figure2 explain the mechanism of the Get and Set commands.

Note: For LAN control, the port number is 5000

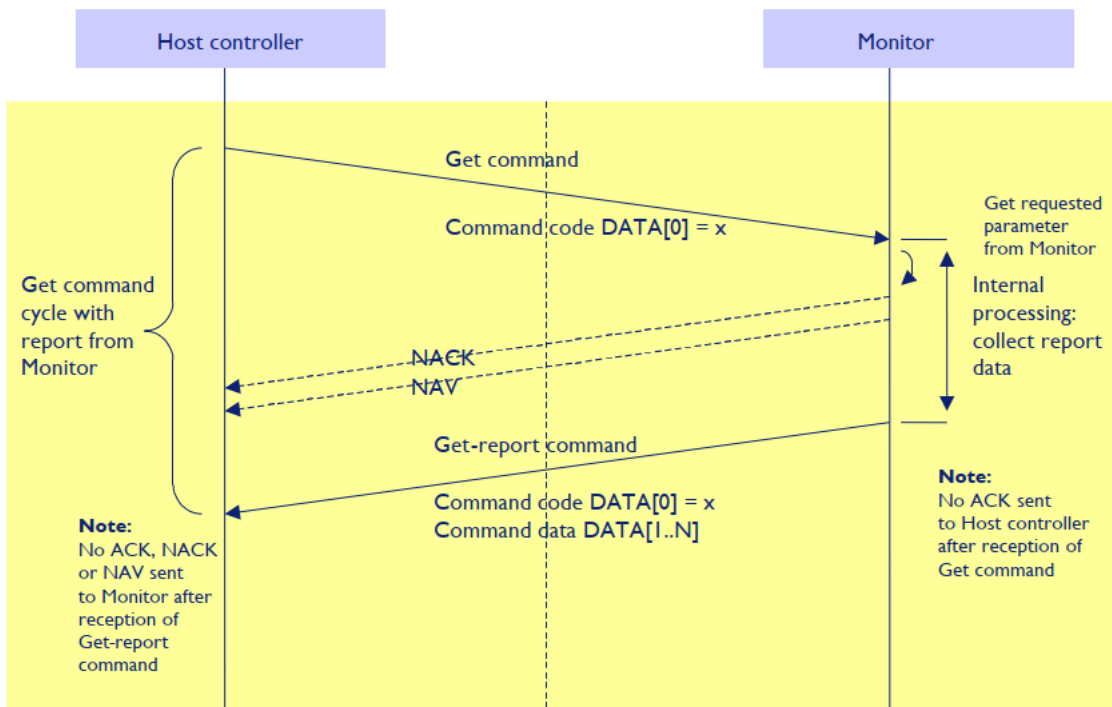


Figure 1: Explanation of mechanism of Get Command.

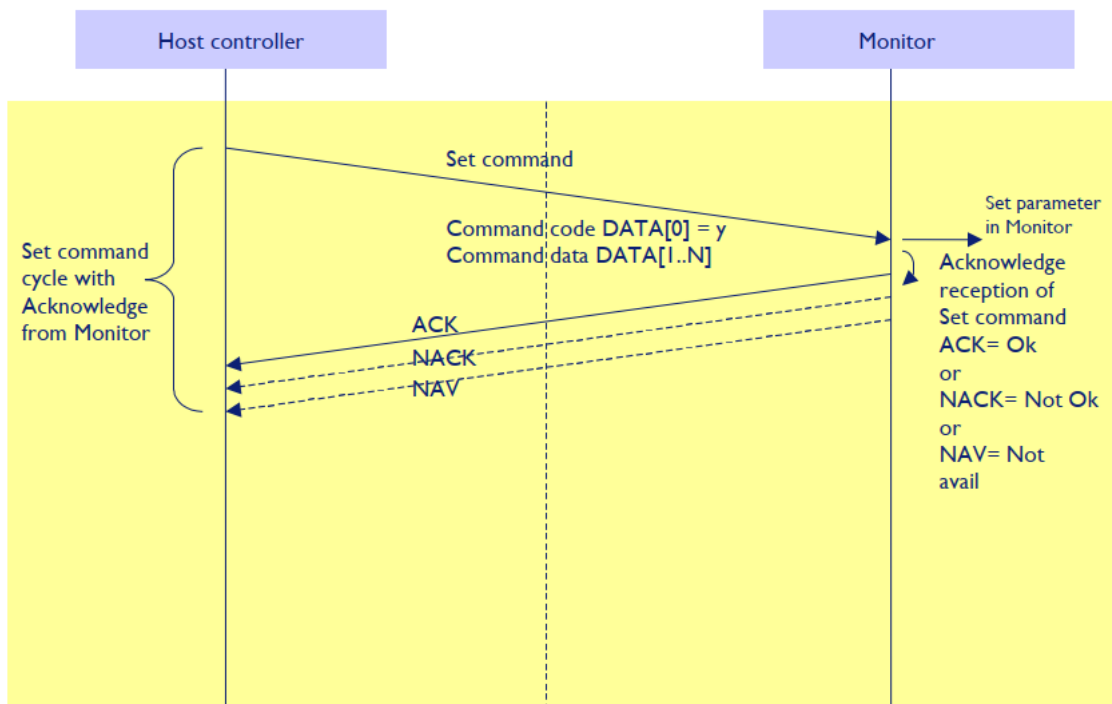


Figure 2: Explanation of mechanism of Set Command.

2.3 Command Format

The RS232 packet format:

Header	Monitor ID	Category	Code0	CodeI	Length	Data Control	Data[0]	...	Data[N]	Checksum
--------	------------	----------	-------	-------	--------	--------------	---------	-----	---------	----------

In detail:

Number of Field	Name of Field	Description
Byte 1	Header	Header = 0xA6
Byte 2	Monitor ID	Monitor ID Range : 1 ~ 255 Signal mode: Display Address range from 1 to 255 Broadcast mode: Display Address is 0 which indicates no ACK or Report is expected.
Byte 3	Category	Category = 0x00 (fixed)
Byte 4	Code0 (Page)	Page = 0x00 (fixed)
Byte 5	CodeI (Function)	
Byte 6	Length	Length has to be calculated in the following way: Length = N + 3
Byte 7	Data Control	Data Control = 0x01 (fixed)
Byte 8 ~ Byte 44	Data[0] ~ Data[N]	This field can be also empty. If not empty then the range of Data Size, N = 0 to 36.
Last Byte	Checksum	Checksum. Range = 0 to 255 (0xFF). Algorithm: The EXCLUSIVE-OR (XOR) of all bytes in the message except the checksum itself. Checksum = [Header] XOR [Monitor ID] XOR ... DATA[0] ... XOR DATA[N]

Command Examples (for display with IDI):

Power OFF: A60100000004011801BB

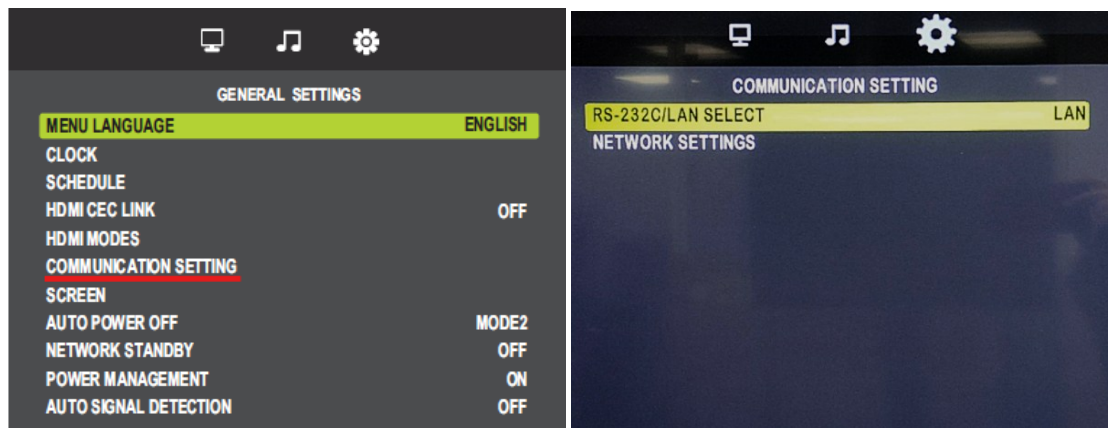
Power ON: A60100000004011802B8

After the screen is switched on via LAN, the network connection is reset.
The control system must establish a new connection.

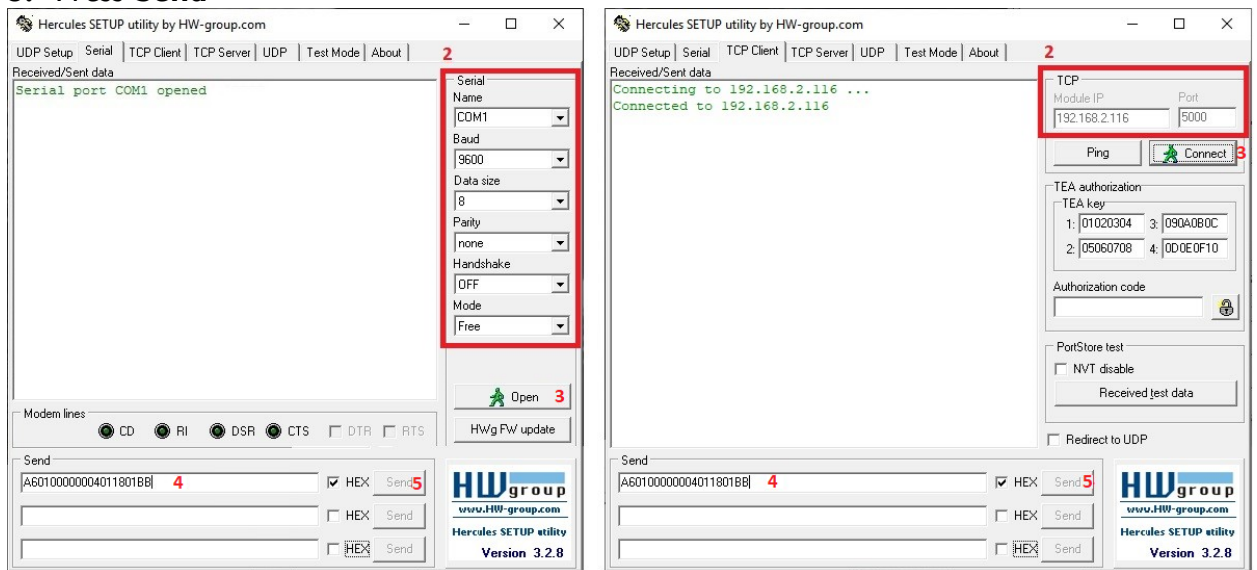
Switch to HDMI input: A6010000000701AC0D00000000

The commands can be sent to the screen with a terminal app, for example [Hercules SETUP utility](#) .
To send command with Hercules SETUP utility

1. set the proper RS232 routing (RS232/LAN) parameter:



2. Set display's IP address and Port: 5000 for LAN connection / serial port parameter.
3. Press **Open** (for serial connection) or **Connect** (for LAN connection)
4. Insert the command.
5. Press **Send**



MESSAGES - SYSTEM

2.4 Communication Control

This defines the feedback command from monitor to host controller when it receives the display command from the host controller, depending on the command's availability, the command reported back to host controller can be one of the ACK, NACK or NAV.

Note: there is no reply message when the wrong ID address is being used.

2.4.1 Message-Report

Number of Field	Name of Field	Description
Byte 1	Header	Header = 0x21
Byte 2	Monitor ID	Monitor ID Range : 1 ~ 255
Byte 3	Category	Category = 0x00 (fixed)
Byte 4	Code0 (Page)	Page = 0x00 (fixed)
Byte 5	Length	Length = 0x04
Byte 6	Data Control	Data Control = 0x01 (fixed)
Byte 7	Command	0x00(Communication Control)
Byte 8	Status	0x00: Completed Normal response. 0x01: Limit Over The packets was received normally, but the data value was over the upper limit. 0x02: Limit Over The packets was received normally, but the data value was over the lower limit. 0x03: Command cancelled The packet is received normally but either the value of data is incorrect or request is not permitted for the current host value. 0x04: Parse Error Received not defined format data or check sum Error.
Byte 9	Checksum	Check Sum The total from Byte1 to Byte8 calculated by XOR

3 Platform and Version Labels , Model Number, FW Version, Build date

3.1 Platform and Version Labels

This command provides the OTSC protocol version and the display Software version to the host controller.

3.1.1 Message-Get

Bytes	Bytes Description	Bits	Description
DATA[0]	0xA2 = Platform and Version Labels - Get		Request the OTSC version.
DATA[1]	Which Label		0x00 = Get OTSC implementation version 0x01 = Get the platform label 0x02 = Get the platform version (Ex: Eagle 1.2, Eagle 1.3, Phoenix 1.0, Himalaya, Andes...)

Example: Get version (Display address 01)

Header	Monitor ID	Category	Code0	Code1	Length	Data Control	Data[0]	Data[1]	Checksum
0xA6	0x01	0x00	0x00	0x00	0x04	0x01	0xA2	0x00	0x00

3.1.2 Message-Report

Bytes	Bytes Description	Bits	Description
DATA[0]	0xA2 = Platform and Version Label - Report		Request the internal Hardware version.
DATA[1] to DATA[N]	Character[0] to Character[N-1]		36 (0x24) characters maximum. No. of characters, N = 1 to 36 (0x24). The actual size determines the value of the message size byte.

3.1.3 Message-Get (Model Number, FW Version, Build date)

Bytes	Bytes Description	Bits	Description
DATA[0]	0xA1 = Get Model Number & FW version of device with Date		Request the Model Number and FW version of the device
DATA[1] to DATA[N]	Codes to request		0x00 = Model Number 0x01 = FW version 0x02 = Build Date

3.1.4 Message-Report (Model Number, FW Version, Build date)

Bytes	Bytes Description	Bits	Description
DATA[0]	0xA1 = Report - Model Number & FW version of device with Date		Request the Model number, FW version, FW build date
DATA[1] to DATA[N]	Character[0] to Character[N-1]		36 (0x24) characters maximum. No. of characters, N = 1 to 36 (0x24). The actual size determines the value of the message size byte.

4 MESSAGES - GENERAL

4.1 Power state

This command is used to set/get the power state as it is defined as below.

4.1.1 Message-Get

Bytes	Bytes Description	Bits	Description
DATA[0]	0x19 = Power state - Get		Command requests the display to report its current power state

Example: (Display address 01)

Header	Monitor ID	Category	Code0	Code1	Length	Data Control	Data[0]	Checksum
0xA6	0x01	0x00	0x00	0x00	0x03	0x01	0x19	0xBC

4.1.2 Message-Report

Bytes	Bytes Description	Bits	Description
DATA[0]	0x19 = Power State - Report		Command reports Power state
DATA[1]	Power State		0x01 = Power Off 0x02 = On

Example: Power State On (Display address 01)

Header	Monitor ID	Category	Page	Length	Data Control	Data[0]	Data[1]	Checksum
0x21	0x01	0x00	0x00	0x04	0x01	0x19	0x02	0x3E

4.1.3 Message-Set

Bytes	Bytes Description	Bits	Description
DATA[0]	0x18 = Power state - Set		Command to change the Power state of the display
DATA[1]	Power state		0x01 = Power Off 0x02 = On

Example: Power State Deep Sleep (Display address 01)

Header	Monitor ID	Category	Code0	Code1	Length	Data Control	Data[0]	Data[1]	Checksum
0xA6	0x01	0x00	0x00	0x00	0x04	0x01	0x18	0x01	0xBB

4.2 Lock Functions for IR-Remote Control

The following commands separately are used to lock/unlock the Remote Control and Keypad.

4.2.1 Message-Get

Bytes	Bytes Description	Bits	Description
DATA[0]	0x1D = Get - Lock Status – IR – Remote Control		Get unlock all /lock all /lock all but power/lock all but volume/ Primary/Secondary status

Example: (Display address 01)

Header	Monitor ID	Category	Code0	Code1	Length	Data Control	Data[0]	Checksum
0xA6	0x01	0x00	0x00	0x00	0x03	0x01	0x1D	0xB8

4.2.2 Message-Report (IR-Remote Control)

Bytes	Bytes Description	Bits	Description
DATA[0]	0x1D = Report - Lock Status – IR – Remote Control		Report unlock all /lock all /lock all but power/lock all but volume/ Primary/Secondary status
DATA[1]	Status indicator byte for Remote Control		0x01 = Unlock all 0x02 = Lock all 0x03 = Lock all but Power 0x04 = Lock all but Volume 0x05 = Primary (Master) 0x06 = Secondary (Daisy chain PD) 0x07 = Lock all except Power & Volume

Example: Lock Keyboard and unlocked Remote Control (Display address 01)

Header	Monitor ID	Category	Page	Length	Data Control	Data[0]	Data[1]	Checksum
0x21	0x01	0x00	0x00	0x04	0x01	0x1D	0x01	0x39

4.2.3 Message-Set (IR –Remote Control)

Bytes	Bytes Description	Bits	Description
DATA[0]	0x1C = Set - Lock State – IR – Remote Control		Set unlock all/lock all /lock all but power/lock all but volume/ Primary/Secondary status
DATA[1]	Status indicator byte for Remote Control		0x01 = Unlock all 0x02 = Lock all 0x03 = Lock all but Power 0x04 = Lock all but Volume 0x05 = Primary (Master) - Reply OTS_SET_IR_ACK(0x21 0x01 0x00 0x00 0x04 0x01 0x00 0x00 0x25) 0x06 = Secondary (Daisy chain PD) - Reply OTS_SET_IR_ACK(0x21 0x01 0x00 0x00 0x04 0x01 0x00 0x00 0x25) 0x07 = Lock all except Power & Volume

Example: Unlock local remote control (Display address 01)

Header	Monitor ID	Category	Code0	Code1	Length	Data Control	Data[0]	Data[1]	Checksum
0xA6	0x01	0x00	0x00	0x00	0x04	0x01	0x1C	0x01	0xBF

4.2.4 Message-Get (Keypad)

Bytes	Bytes Description	Bits	Description
DATA[0]	0x1B = Get - Keypad Lock Status		Set unlock all/lock all /lock all but power/lock all but volume/ Primary/Secondary status

Example: (Display address 01)

Header	Monitor ID	Category	Code0	Code1	Length	Data Control	Data[0]	Checksum
0xA6	0x01	0x00	0x00	0x00	0x03	0x01	0x1B	0xBE

4.2.5 Message-Report (Keypad)

Bytes	Bytes Description	Bits	Description
DATA[0]	0x1B = Report - Keypad Status		Report unlock all /lock all/lock all but power/ lock all but Volume
DATA[1]	Status indicator byte for Keypad		0x01 = Unlock all 0x02 = Lock all 0x03 = Lock all but Power 0x04 = Lock all but Volume 0x07 = Lock all except Power & Volume

Example: Reporting status of Keypad indicating Lock all for (Display address 01)

Header	Monitor ID	Category	Page	Length	Data Control	Data[0]	Data[1]	Checksum
0x21	0x01	0x00	0x00	0x04	0x01	0x1B	0x02	0x3C

4.2.6 Message-Set (Keypad)

Bytes	Bytes Description	Bits	Description
DATA[0]	0x1A = Set - Keypad Lock Status		Report unlock all /lock all/lock all but power/ lock all but Volume
DATA[1]	Status indicator byte for Keypad		0x01 = Unlock all 0x02 = Lock all 0x03 = Lock all but Power 0x04 = Lock all but Volume 0x07 = Lock all except Power & Volume

Example: Set Lock all on Keypad for (Display address 01)

Header	Monitor ID	Category	Code0	Code1	Length	Data Control	Data[0]	Data[1]	Checksum
0xA6	0x01	0x00	0x00	0x00	0x04	0x01	0x1A	0x01	0xB9

4.3 Power state at Cold Start

Command is used to set the cold start power state, the cold start power state are updated and stored by this command.

4.3.1 Message-Get

Bytes	Bytes Description	Bits	Description
DATA[0]	0xA4 = Power at Cold Start - Get		Get Power state at Cold Start state

Example: (Display address 01)

Header	Monitor ID	Category	Code0	Code1	Length	Data Control	Data[0]	Checksum
0xA6	0x01	0x00	0x00	0x00	0x03	0x01	0xA4	0x01

4.3.2 Message-Report

Bytes	Bytes Description	Bits	Description
DATA[0]	0xA4 = Power at Cold Start – Report		Report from Power state at Cold Start state
DATA[1]	Power at Cold Start		0x00 = Power Off 0x01 = Forced On 0x02 = Last Status

Example: Report status of Forced On for power at cold start. (Display address 01)

Header	Monitor ID	Category	Page	Length	Data Control	Data[0]	Data[1]	Checksum
0x21	0x01	0x00	0x00	0x04	0x01	0xA4	0x01	0x80

4.3.3 Message-Set

Bytes	Bytes Description	Bits	Description
DATA[0]	0xA3 = Power at Cold Start - Set		Set Power state at Cold Start
DATA[1]	Power state at Cold Start		0x00 = Power Off 0x01 = Forced On 0x02 = Last Status

The value is stored and it is applied only when the display starts up from cold start power state the next time:
Power Off:

The monitor will be automatically switched to Power Off mode (even if the last status was on) whenever the mains power is turned on or resumed after the power interruption.

Forced On:

The monitor will be automatically switched to ON mode whenever the mains power is turned on or resumed after the power interruption.

Last Status:

The monitor will be automatically switched to the last status (either Power Off or On) whenever the mains power is turned on or resumed after the power interruption.

Example: Set Power state at cold start to last status (Display address 01)

Header	Monitor ID	Category	Code0	Code1	Length	Data Control	Data[0]	Data[1]	Checksum
0xA6	0x01	0x00	0x00	0x00	0x04	0x01	0xA3	0x02	0x03

5. MESSAGES - INPUT SOURCES

5.1 Input Source

This command is used to change the current input source.

5.1.1 Message-Set

Bytes	Bytes Description	Bits	Description
DATA[0]	0xAC = Input Source – Set		Command requests the display to set the current input source
DATA[1]	Input Source Type		0x01 = VIDEO 0x02 = S-VIDEO 0x03 = COMPONENT 0x04 = CVI 2 (not applicable) 0x05 = VGA 0x06 = HDMI 2 0x07 = Display Port 2 0x08 = USB 2 0x09 = Card DVI-D 0x0A = Display Port 1 0x0B= Card OPS 0x0C = USB 1 0x0D= HDMI 0x0E= DVI-D 0x0F = HDMI3 0x10= BROWSER 0x11= SMARTCMS 0x12= DMS (Digital Media Server) 0x13= INTERNAL STORAGE 0x14= Reserved 0x15= Reserved 0x16= Media Player 0x17= PDF Player 0x18= Custom 0x19=HDMI 4
DATA[2]	Reserved		(Reserved, value is 0)
DATA[3]	Reserved		(Reserved, value is 0)
DATA[4]	Reserved		(Reserved, value is 0)

Example: Set on DVI-D (Display address 01)

Header	Monitor ID	Category	Code0	Code1	Length	Data Control	Data[0]	Data[1]	Data[2]	Data[3]	Data[4]	Checksum
0xA6	0x01	0x00	0x00	0x00	0x07	0x01	0xAC	0x0E	0x00	0x00	0x00	0x03

5.2 Current Source

5.2.1 Message-Get

Bytes	Bytes Description	Bits	Description
DATA[0]	0xAD = Current Source – Get		Command requests the display to report the current input source in use.

Example: (Display address 01)

Header	Monitor ID	Category	Code0	Code1	Length	Data Control	Data[0]	Checksum
0xA6	0x01	0x00	0x00	0x00	0x03	0x01	0xAD	0x08

5.2.2 Message-Report

Bytes	Bytes Description	Bits	Description
DATA[0]	0xAD = Current Source – Report		Command reports to the host controller the current input source in use by the display.
DATA[1]	Input Source Type/Number		0x01 = VIDEO 0x02 = S-VIDEO 0x03 = COMPONENT 0x04 = CVI 2 (not applicable) 0x05 = VGA 0x06 = HDMI 2 0x07 = Display Port 2 0x08 = USB 2 0x09 = Card DVI-D 0x0A = Display Port 1 0x0B= Card OPS 0x0C = USB 1 0x0D= HDMI 0x0E= DVI-D 0x0F = HDMI3 0x10= BROWSER 0x11= SMARTCMS 0x12= DMS (Digital Media Server) 0x13= INTERNAL STORAGE 0x14= Reserved 0x15= Reserved 0x16= Media Player 0x17= PDF Player 0x18= Custom 0x19=HDMI 4
DATA[2]	Reserved		(Reserved, value is 0)
DATA[3]	Reserved		(Reserved, value is 1)
DATA[4]	Reserved		(Reserved, value is 0)

Example: Current Input Source: DVI-D (Display address 01)

Header	Monitor ID	Category	Page	Length	Data Control	Data[0]	Data[1]	Data[2]	Data[3]	Data[4]	Checksum
0x21	0x01	0x00	0x00	0x07	0x01	0xAD	0x0E	0x00	0x01	0x00	0x84

6. MESSAGES - VIDEO

6.1 Video Parameters

The following commands are used to get/set video parameters as it is defined below.

6.1.1 Message-Get

Bytes	Bytes Description	Bits	Description
DATA[0]	0x33 = Video Parameters – Get		Command requests the display to report its current video parameters.

Example: (Display address 01)

Header	Monitor ID	Category	Code0	Code1	Length	Data Control	Data[0]	Checksum
0xA6	0x01	0x00	0x00	0x00	0x03	0x01	0x33	0x96

6.1.2 Message-Report

Bytes	Bytes Description	Bits	Description
DATA[0]	0x33 = Video Parameters – Report		Command reports to the host controller the current video parameters of the display.
DATA[1]	Brightness.		0 to 100 (%) of the user selectable range of the display.
DATA[2]	Color.		0 to 100 (%) of the user selectable range of the display.
DATA[3]	Contrast.		0 to 100 (%) of the user selectable range of the display.
DATA[4]	Sharpness.		0 to 100 (%) of the user selectable range of the display.
DATA[5]	Tint (Hue)		0 to 100 (%) of the user selectable range of the display.
DATA[6]	Black Level		0 to 100 (%) of the user selectable range of the display.
DATA[7]	Gamma Selection		0x01= Native, 0x02 = S gamma, 0x03 = 2.2, 0x04 = 2.4, 0x05 = D-image(DICOM gamma)

Example: All video parameters are set to 55 % (0x37) and Gamma Curve is set to 2.2 (Display address 01)

Header	Monitor ID	Category	Page	Length	Data Control	Data[0]	Data[1]	Data[2]	Data[3]	Data[4]	Data[5]	Data[6]	Data[7]	Checksum
0x21	0x01	0x00	0x00	0x0A	0x01	0x33	0x37	0x37	0x37	0x37	0x37	0x37	0x03	0x1B

6.1.3 Message-Set

Bytes	Bytes Description	Bits	Description
DATA[0]	0x32 = Video Parameters – Set		Command to change the current video parameters
DATA[1]	Brightness.		0 to 100 (%) of the user selectable range of the display.
DATA[2]	Color.		0 to 100 (%) of the user selectable range of the display.
DATA[3]	Contrast.		0 to 100 (%) of the user selectable range of the display.
DATA[4]	Sharpness.		0 to 100 (%) of the user selectable range of the display.
DATA[5]	Tint (Hue)		0 to 100 (%) of the user selectable range of the display.
DATA[6]	Black Level		0 to 100 (%) of the user selectable range of the display.
DATA[7]	Gamma Selection		0x01= Native, 0x02 = S gamma, 0x03 = 2.2, 0x04 = 2.4, 0x05 = D-image(DICOM gamma)

Example: Set all video parameters to 0x37 (55 %) (Display address 01)

Header	Monitor ID	Category	Code0	Code1	Length	Data Control	Data[0]	Data[1]	Data[2]	Data[3]	Data[4]	Data[5]	Data[6]	Data[7]	Checksum	
0xA6	0x01	0x00	0x00	0x00	0x0A	0x01	0x32	0x37	0x37	0x37	0x37	0x37	0x37	0x37	0x03	0xAC

6.1.4 Message-Get

Bytes	Bytes Description	Bits	Description
DATA[0]	0x35 = Color Temperature – Get		Command requests the display to report its current color temperature.

Example: (Display address 01)

Header	Monitor ID	Category	Code0	Code1	Length	Data Control	Data[0]	Checksum
0xA6	0x01	0x00	0x00	0x00	0x03	0x01	0x35	0x90

6.1.5 Message-Report

Bytes	Bytes Description	Bits	Description
DATA[0]	0x35 = Color Temperature – Report		Command reports to the host controller the current color temperature of the display.
DATA[1]	Color temperature		0x00 = User 1 0x01 = Native 0x02 = 11000K(Not applicable) 0x03 = 10000K 0x04 = 9300K 0x05 = 7500K 0x06 = 6500K 0x07 = 5770K (Not applicable) 0x08 = 5500K(Not applicable) 0x09 = 5000K 0x0A = 4000K 0x0B = 3400K (Not applicable) 0x0C = 3350K (Not applicable) 0x0D = 3000K 0x0E = 2800K (Not applicable) 0x0F = 2600K (Not applicable) 0x10 = 1850K (Not applicable) 0x12 = User 2

Example: The current color temperature is set to Nature (Display address 01)

Header	Monitor ID	Category	Page	Length	Data Control	Data[0]	Data[1]	Checksum
0x21	0x01	0x00	0x00	0x04	0x01	0x35	0x01	0x10

6.1.8 Message-Set

Bytes	Bytes Description	Bits	Description
DATA[0]	0x36 = Color Parameters – Report		Command reports to the host controller the current video parameters of the display.
DATA[1]	Red color gain value		0 to 255 of the user selectable range of the display.
DATA[2]	Green color gain value		0 to 255 of the user selectable range of the display.
DATA[3]	Blue color gain value		0 to 255 of the user selectable range of the display.
DATA[4]	Red color offset value		0 to 255 of the user selectable range of the display.
DATA[5]	Green color offset value		0 to 255 of the user selectable range of the display.
DATA[6]	Blue color offset value		0 to 255 of the user selectable range of the display.

Example: All color parameters are set to 255 (0xFF) (Display address 01)

Header	Monitor ID	Category	Code0	Code1	Length	Data Control	Data[0]	Data[1]	Data[2]	Data[3]	Data[4]	Data[4]	Data[5]	Checksum
0xA6	0x01	0x00	0x00	0x00	0x09	0x01	0x36	0xFF	0xFF	0xFF	0xFF	0xFF	0xFF	0x99

6.2 Picture Format

This command is used to control the display screen format.

6.2.1 Message-Get

Bytes	Bytes Description	Bits	Description
DATA[0]	0x3B = Picture Format – Get		Command requests the display to report its current picture format

Example: (Display address 01)

Header	Monitor ID	Category	Code0	Code1	Length	Data Control	Data[0]	Checksum
0xA6	0x01	0x00	0x00	0x00	0x03	0x01	0x3B	0x9E

6.2.2 Message-Report

Bytes	Bytes Description	Bits	Description
DATA[0]	0x3B = Picture Format – Report		Command report to the host controller the current picture format of the display.
DATA[1]	Picture Format*	Bit 7..4	Not used.
		Bit 3..0	Picture Format. 0x00 = Normal (4:3) 0x01 = Custom 0x02 = Real (1:1) 0x03 = Full 0x04 = 21:9 0x05 = Dynamic (DSXX6QBK not support) 0x06 = 16:9

* For further explanations, please see section 6.2.3 – Message-Set.

Example: Current Picture Format is Widescreen on Full Display (Display address 01)

Header	Monitor ID	Category	Page	Length	Data Control	Data[0]	Data[1]	Checksum
0x21	0x01	0x00	0x00	0x04	0x01	0x3B	0x03	0x1D

6.2.3 Message-Set

Bytes	Bytes Description	Bits	Description
DATA[0]	0x3A = Picture Format – Set		Command requests the display to set the specified picture format
DATA[1]	Picture Format	Bit 7..4	Not used.
		Bit 3..0	Picture Format. 0x00 = Normal (4:3) 0x01 = Custom 0x02 = Real (1:1) 0x03 = Full 0x04 = 21:9 0x05 = Dynamic (DSXX6QBK not support) 0x06 = 16:9

* For further explanations, please see section 6.2.3 – Message-Set.

Example: Set Picture Format to Widescreen on Full Display (Display address 01)

Header	Monitor ID	Category	Code0	Code1	Length	Data Control	Data[0]	Data[1]	Checksum
0xA6	0x01	0x00	0x00	0x00	0x04	0x01	0x3A	0x03	0x9B

7. MESSAGES - AUDIO

7.1 Volume

This command is used to set/get the Volume as it is defined as below.

7.1.1 Message-Get

Bytes	Bytes Description	Bits	Description
DATA[0]	0x45 = Volume – Get		Command requests the display to report its current Volume level

The interface to set Software must be such that they also modify the variables representing these current parameters.

To mute the display, send Volume = 0. This command does not overwrite the system mute status of the display.

Example: (Display address 01)

Header	Monitor ID	Category	Code0	Code1	Length	Data Control	Data[0]	Checksum
0xA6	0x01	0x00	0x00	0x00	0x03	0x01	0x45	0xE0

7.1.2 Message-Report

Bytes	Bytes Description	Bits	Description
DATA[0]	0x45 = Volume – Report		Command reports current Volume level
DATA[1]	Volume.		0 to 100 (%) of the user selectable range of the display.
DATA[2]	Audio Out Volume level		0 to 100 (%) of the user selectable range of the display.

Example: Current Display settings: Volume:77% (0x4D), Audio Out:77%(0x4D) (Display address 01)

Header	Monitor ID	Category	Page	Length	Data Control	Data[0]	Data[1]	Data[2]	Checksum
0x21	0x01	0x00	0x00	0x05	0x01	0x45	0x4D	0x4D	0x61

7.1.3 Message-Set

This command can set volume level for speaker & audio out individually.

Bytes	Bytes Description	Bits	Description
DATA[0]	0x44 = Volume – Set		
DATA[1]	Volume.		0 to 100 (%) of the user selectable range of the display.
DATA[2]	Audio Out Volume level		0 to 100 (%) of the user selectable range of the display.

Example: Set the Display Volume to 77% (0x4D) (Display address 01)

Header	Monitor ID	Category	Code0	Code1	Length	Data Control	Data[0]	Data[1]	Data[1]	Checksum
0xA6	0x01	0x00	0x00	0x00	0x05	0x01	0x44	0x4D	0x4D	0xE7

7.2 Volume Limits

This command is used to set the volume limit (minimum, maximum and switch on volume).

7.2.1 Message-Set

Bytes	Bytes Description	Bits	Description
DATA[0]	0xB8 = Volume Limits– Set		The 3 values must conform to the rule :

			Min <= Switch On <= Max
DATA[1]	Minimum Volume		0 to 100 (%) of the user selectable range of the display.
DATA[2]	Maximum Volume		0 to 100 (%) of the user selectable range of the display.
DATA[3]	Switch On Volume		0 to 100 (%) of the user selectable range of the display.

Example: Set the Display to the following: 10% (0x0A), 77% (0x4D), 50% (0x32) (Display address 01)

Header	Monitor ID	Category	Code0	Code1	Length	Data Control	Data[0]	Data[1]	Data[2]	Data[3]	Checksum
0xA6	0x01	0x00	0x00	0x00	0x06	0x01	0xB8	0x0A	0x4D	0x32	0x6D

7.3 Audio Parameters

This command is used to set/get the audio parameters as it is defined as below.

7.3.1 Message-Get

Bytes	Bytes Description	Bits	Description
DATA[0]	0x43 = Audio Parameters – Get		Command requests the display to report its current audio parameters

Example: (Display address 01)

Header	Monitor ID	Category	Code0	Code1	Length	Data Control	Data[0]	Checksum
0xA6	0x01	0x00	0x00	0x00	0x03	0x01	0x43	0xE6

7.3.2 Message-Report

Bytes	Bytes Description	Bits	Description
DATA[0]	0x43 = Audio Parameters – Report		Command reports Audio Parameters
DATA[1]	Treble.		0 to 10 of the user selectable range of the display.
DATA[2]	Bass.		0 to 10 of the user selectable range of the display.

Example: Current Display settings: Treble:5 (0x5) , Bass:10 (0x10) (Display address 01)

Header	Monitor ID	Category	Page	Length	Data Control	Data[0]	Data[1]	Data[2]	Checksum
0x21	0x01	0x00	0x00	0x05	0x01	0x43	0x05	0x10	0x72

7.3.3 Message-Set

Bytes	Bytes Description	Bits	Description
DATA[0]	0x42 = Audio Parameters – Set		Command to change the Audio Parameters of the display
DATA[1]	Treble.		0 to 10 of the user selectable range of the display.
DATA[2]	Bass.		0 to 10 of the user selectable range of the display.

The interface to set Software must be such that they modify the variables representing these current parameters

Example: Set the Display to the following: Treble:5 (0x05) , Bass:10 (0x10) (Display address 01)

Header	Monitor ID	Category	Code0	Code1	Length	Data Control	Data[0]	Data[1]	Data[2]	Checksum
0xA6	0x01	0x00	0x00	0x00	0x05	0x01	0x42	0x05	0x10	0xF4

8. MISCELLANEOUS

8.1 Operating Hours

The command is used to record the working hours of the display.

8.1.1 Message-Get

Bytes	Bytes Description	Bits	Description
DATA[0]	0x0F = Misc Info - Get		Command requests the display to report from miscellaneous information parameters
DATA[1]	Item		0x02 = Operating Hours (All other values are reserved)

Example: (Display address 01)

Header	Monitor ID	Category	Code0	Code1	Length	Data Control	Data[0]	Data[1]	Checksum
0xA6	0x01	0x00	0x00	0x00	0x04	0x01	0x0F	0x02	0xAF

8.1.2 Message-Report

Bytes	Bytes Description	Bits	Description
DATA[0]	0x0F = Misc Info - Report		Command reports current Operating Hours
DATA[1] to DATA[2]	Operating Hours		DATA[1] and DATA[2] form the MSByte and LSByte, respectively, of the 16-bit-wide Operational Hours value.

Example: Current Display Operation Hours counter value (Display address 01)

Header	Monitor ID	Category	Page	Length	Data Control	Data[0]	Data[1]	Data[2]	Checksum
0x21	0x01	0x00	0x00	0x05	0x01	0x0F	0x4D	0x00	0x66

8.2 Auto Adjust

This command works for VGA (host controller) video auto adjust.

8.2.1 Message-Set

Bytes	Bytes Description	Bits	Description
DATA[0]	0x70 = Video Alignment - Set		Command requests the display to make auto adjustment on VGA Input source.
DATA[1]	Item		0x40 = Auto Adjust (* All other values are reserved *)
DATA[2]			(reserved, default 0)

Example: (Display address 01)

Header	Monitor ID	Category	Code0	Code1	Length	Data Control	Data[0]	Data[1]	Data[2]	Checksum
0xA6	0x01	0x00	0x00	0x00	0x05	0x01	0x70	0x40	0x00	0x93

8.3 Serial Code

8.3.1 Message-Get

Bytes	Bytes Description	Bits	Description
DATA[0]	0x15 = Serial Code Get		Command requests the display to report its Serial Code Number (Production code) 14 digits

Example: (Display address 01)

Header	Monitor ID	Category	Code0	Code1	Length	Data Control	Data[0]	Checksum
0xA6	0x01	0x00	0x00	0x00	0x03	0x01	0x15	0xB0

8.3.2 Message-Report

Bytes	Bytes Description	Bits	Description
DATA[0]	0x15 = Serial Code – Report		Command reports Serial Code
DATA[1]	1 st Character		Character acc. ASCII character map (HEX)
DATA[2]	2 nd Character		
DATA[3]	3 rd Character		
DATA[14]	14 th Character		Character acc. ASCII character map (HEX)

9. Scheduling

9.1 Scheduling Parameters

The following commands are used to get/set scheduling parameters as it is defined below.

9.1.1 Message-Get

Bytes	Bytes Description	Bits	Description
DATA[0]	0x5B = Scheduling Parameters - Get		Command requests the display to report its current Scheduling parameters
DATA[1]	Page		1 to 7 of the scheduling pages

Example: (Display address 01)

Header	Monitor ID	Category	Code0	Code1	Length	Data Control	Data[0]	Data[1]	Checksum
X		X	X	X		X			
0xA6	0x01	0x00	0x00	0x00	0x04	0x01	0x5B	0x01	0xF8

9.1.2 Message-Report

Bytes	Bytes Description	Bits	Description
DATA[0]	0x5B = Scheduling Parameters - Report		Command reports to the host controller the current Scheduling parameters of the display.
DATA[1]	Page		0: Page disable 1: Page enable
DATA[2]	Start time hour		0 to 23 of the start time hour 24: NULL
DATA[3]	Start time minute		0 to 59 of the start time minute 60: NULL
DATA[4]	End time hour		0 to 23 of the end time hour 24: NULL
DATA[5]	End time minute		0 to 59 of the end time minute 60: NULL
DATA[6]	Video source		0 to 100 (%) of the user selectable range of the display. For video source: 0x00 = NULL 0x01 = VIDEO 0x02 = S-VIDEO 0x03 = COMPONENT 0x04 = CVI 2 (not applicable) 0x05 = VGA 0x06 = HDMI 2 0x07 = Display Port 2 0x08 = USB 2 0x09 = Card DVI-D 0x0A = Display Port 0x0B = Card OPS 0x0C = USB 0x0D = HDMI 0x0E = DVI-D 0x0F = HDMI3 0x10 = BROWSER 0x11 = SMARTCMS 0x12 = DMS (Digital Media Server)

			0x13= INTERNAL STORAGE 0x14= Reserved 0x15= Reserved 0x16=Media Player 0x17=PDF Player 0x18=Custom
DATA[7]	Working day(s)		To set the scheduling working days. Bit0 = 1: every week Bit1 = Monday Bit2 = Tuesday Bit3 = Wednesday Bit4 = Thursday Bit5 = Friday Bit6 = Saturday Bit7 = Sunday
DATA[8]	Bookmark/Playlist/File Tag(s)		To set the set Tag from 1 through 7. 0x00 = none 0x01 = Tag 1 0x02 = Tag 2 0x03 = Tag 3 0x04 = Tag 4 0x05 = Tag 5 0x06 = Tag 6 0x07 = Tag 7

Example: Report page 1 with DisplayPort starts at 06:30 and ends at 22:00 every day.

Header	Monitor ID	Category	Page	Length	Data Control	Data (0)	Data (1)	Data (2)
0x21	0x01	0x00	0x00	0x0B	0x01	0x5B	0x00	0x06
Data (3)	Data (4)	Data (5)	Data (6)	Data (7)	DATA[8]	Checksum		
0x1E	0x16	0x00	0x0A	0xFF	0x00	0x8A		

9.1.3 Message-Set

Bytes	Bytes Description	Bits	Description
DATA[0]	0x5A = Scheduling Parameters – Set		Command to change the current Scheduling parameters
DATA[1]	Page		BIT 7-BIT4: 1 to 7 of the scheduling pages BIT 3-BIT0: 0: Page disable 1: Page enable
DATA[2]	Start time hour		0 to 23 of the start time hour 24: NULL
DATA[3]	Start time minute		0 to 59 of the start time minute 60: NULL
DATA[4]	End time hour		0 to 23 of the end time hour 24: NULL
DATA[5]	End time minute		0 to 59 of the end time minute 60: NULL
DATA[6]	Video source		0 to 100 (%) of the user selectable range of the display. For video source: 0x00 = NULL 0x01 = VIDEO 0x02 = S-VIDEO 0x03 = COMPONENT 0x04 = CVI 2 (not applicable)

			0x05 = VGA 0x06 = HDMI 2 0x07 = Display Port 2 0x08 = USB 2 0x09 = Card DVI-D 0x0A = Display Port 0x0B= Card OPS 0x0C = USB 0x0D= HDMI 0x0E= DVI-D 0x0F = HDMI3 0x10= BROWSER 0x11= SMARTCMS 0x12= DMS (Digital Media Server) 0x13= INTERNAL STORAGE 0x14= Reserved 0x15= Reserved 0x16=Media Player 0x17=PDF Player 0x18=Custom
DATA[7]	Working day(s)		To set the scheduling working days. Bit0 = 1: every week Bit1 = Monday Bit2 = Tuesday Bit3 = Wednesday Bit4 = Thursday Bit5 = Friday Bit6 = Saturday Bit7 = Sunday
DATA[8]	Bookmark/Playlist/File Tag(s)		To set the set Tag from 1 through 7. For Video sources, Media Player, Browser and PDF, only 1~7 are valid and 0 will get error ack. For the reset of video sources like HDMI, DVI and so on, the byte is useless. 0x00 = none 0x01 = Tag 1 0x02 = Tag 2 0x03 = Tag 3 0x04 = Tag 4 0x05 = Tag 5 0x06 = Tag 6 0x07 = Tag 7

Example: Set page 1 with DisplayPort starts at 06:30 and ends at 22:00 every day.

Header	Monitor ID	Category	Code0	Code1	Length	Data Control	Data (0)	Data (1)
0xA6	0x01	0x00	0x00	0x00	0x0B	0x01	0x5A	0x10
Data (2)	Data (3)	Data (4)	Data (5)	Data (6)	Data (7)	Data (8)	Checksum	
0x06	0x1E	0x16	0x00	0x0A	0xFF	0x00	0x1C	

10. Language

10.1 Language Parameters

The following commands are used to get/set scheduling parameters as it is defined below.

10.1.1 Message-Get

Bytes	Bytes Description	Bits	Description
DATA[0]	0xC0 = Language – Get		Command requests the display to report its current Language

Example: (Display address 01)

Header	Monitor ID	Category	Code0	Code1	Length	Data Control	Data[0]	Checksum
0xA6	0x01	0x00	0x00	0x00	0x03	0x01	0xC0	0x65

10.1.2 Message-Report

Bytes	Bytes Description	Bits	Description
DATA[0]	0xC0 = Language – Report		Command report to the host controller the current language of the display.
DATA[1]	Language		0x00 = ENGLISH 0x01 = GERMAN 0x02 = SIMPLIFIED_CHINESE 0x03 = FRENCH 0x04 = ITALIAN 0x05 = SPANISH 0x06 = RUSSIAN 0x07 = POLSKI 0x08 = TURKISH 0x09 = TRADITIONAL_CHINESE 0x0A = JAPANESE 0x0B= PORTUGUESE 0x0C = ARABIC 0x0D= DANISH 0x0E= SWEDISH 0x0F = FINNISH 0x10= NORWEGIAN 0x11 = DUTCH

Example: Current Language is SIMPLIFIED_CHINESE (Display address 01)

Header	Monitor ID	Category	Page	Length	Data Control	Data[0]	Data[1]	Checksum
0x21	0x01	0x00	0x00	0x04	0x01	0xC0	0x02	0xE7

10.1.3 Message-Set

Bytes	Bytes Description	Bits	Description
DATA[0]	0xC1 = Language – Set		Command requests the display to set the specified language

DATA[1]	Language	0x00 = ENGLISH 0x01 = GERMAN 0x02 = SIMPLIFIED_CHINESE 0x03 = FRENCH 0x04 = ITALIAN 0x05 = SPANISH 0x06 = RUSSIAN 0x07 = POLSKI 0x08 = TURKISH 0x09 = TRADITIONAL_CHINESE 0x0A = JAPANESE 0x0B= PORTUGUESE 0x0C = ARABIC 0x0D= DANISH 0x0E= SWEDISH 0x0F = FINNISH 0x10= NORWEGIAN 0x11= DUTCH
---------	----------	---

Example: Set Language to ENGLISH (Display address 01)

Header	Monitor ID	Category	Code0	Code1	Length	Data Control	Data[0]	Data[1]	Checksum
0xA6	0x01	0x00	0x00	0x00	0x04	0x01	0xC1	0x00	0x63

11. Pixel Shift

The command is used to set/get the Pixel Shift value.

11.1.1 Message-Get Pixel Shift

Bytes	Bytes Description	Bits	Description
DATA[0]	0xB1 = Pixel Shift – Get		Command requests the display to report its current Pixel Shift value

Example: (Display address 01)

Header	Monitor ID	Category	Code0	Code1	Length	Data Control	Data[0]	Checksum
0xA6	0x01	0x00	0x00	0x00	0x03	0x01	0xB1	0x14

11.1.2 Message-Report Pixel Shift

Bytes	Bytes Description	Bits	Description
DATA[0]	0xB1 = Pixel Shift – Report		Command reports Pixel Shift Setting
DATA[1]	Off /secs		0x00 = Off 0x01 = 10 secs 0x02 = 20 secs 0x03 = 30 secs 0x04 = 40 secs ... 0x5A = 900 secs 0x5B = AUTO

Example: Current Display settings: Off and ?? secs (Display address 01)

Header	Monitor ID	Category	Page	Length	Data Control	Data[0]	Data[1]	Checksum
0x21	0x01	0x00	0x00	0x04	0x01	0xB1	0x00	0x94
0x21	0x01	0x00	0x00	0x04	0x01	0xB1	0x03	0x97

11.1.3 Message-Set Pixel Shift

Bytes	Bytes Description	Bits	Description
DATA[0]	0xB2 = Pixel Sensor – Set		Command to change the Pixel Shift setting of the display
DATA[1]	Off /mins		0x00 = Off 0x01 = 10 secs 0x02 = 20 secs 0x03 = 30 secs 0x04 = 40 secs ... 0x5A = 900 secs 0x5B = AUTO

Example: Set the Display to the following: Pixel Sensor off and 50 secs (Display address 01)

Header	Monitor ID	Category	Code0	Code1	Length	Data Control	Data[0]	Data[1]	Checksum
0xA6	0x01	0x00	0x00	0x00	0x04	0x01	0xB2	0x05	0x15

12. Command summary

Command name	Set Command	Get Command	Command Code	Remarks
Communication Control			0x00	Generic report
Platform and version labels			0xA2	
Power state get			0x19	
Power state set			0x18	
User Input Control get			0x1D	
User Input Control set			0x1C	
Power state at cold start			0xA3	
Input Source			0xAC	
Current Source			0xAD	
Video parameters get			0x33	Brightness, etc.
Video parameters set			0x32	
Color temperature get			0x35	
Color temperature set			0x34	
Color parameters get			0x37	
Color parameters set			0x36	
Picture Format get			0x3B	
Picture Format set			0x3A	
Volume get			0x45	
Volume set			0x44	
Volume limits			0xB8	
Audio parameters get			0x43	
Audio parameters set			0x42	
Miscellaneous info			0x0F	Operating hours
Auto Adjust			0x70	VGA only
Serial Code Get			0x15	
Scheduling get			0x5B	
Scheduling set			0x5A	
Language get			0xC0	
Language set			0xC1	
Pixel Shift get			0xB1	
Pixel Shift set			0xB2	

13. Revision History

Version	Date	Description
V1		<ol style="list-style-type: none"> 1. Modify example commands in 6.1.7/6.1.8 2. Remove Auto Signal Detecting Get/Set and Temperature Get in command summary. 3. Add color temperature get/set and color parameters get/set in command summary.
V2		<ol style="list-style-type: none"> 1. Modify command of Color parameters get/set(6.1.7/6.1.8)
V3.0	2017.12.29	<ol style="list-style-type: none"> 1. Add new chapter 9 “Scheduling” and chapter 10 “Language”
V3.1	2018.01.04	<ol style="list-style-type: none"> 1. Add new chapter 11 “Pixel Shift”
V3.2	2019.10.31	<ol style="list-style-type: none"> 1. Modify 7.3.2, Data range is 0-10 for DSXX9ABF/QBK only