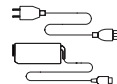
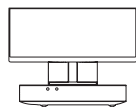


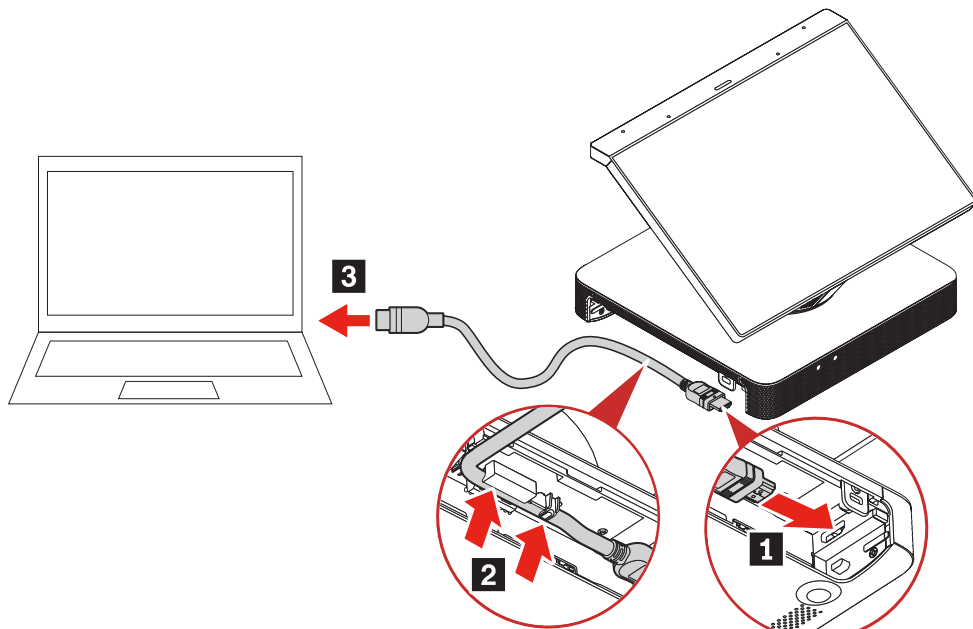
**ThinkSmart** | Hub



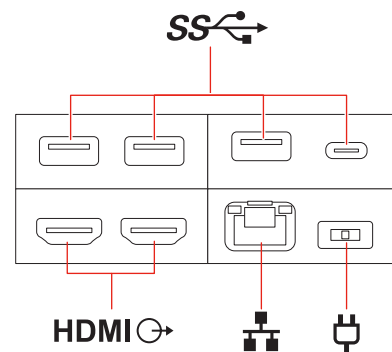
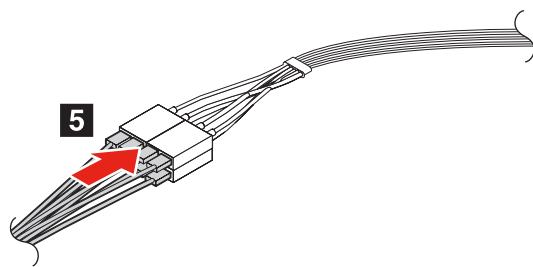
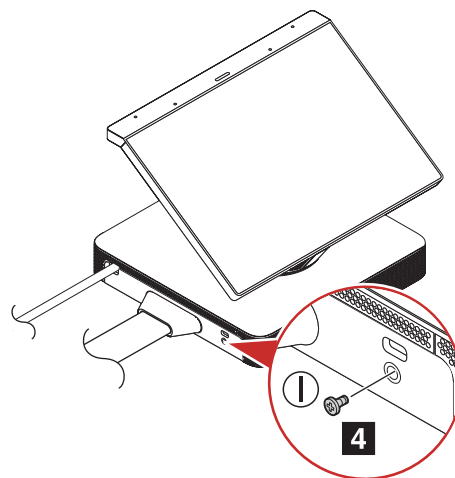
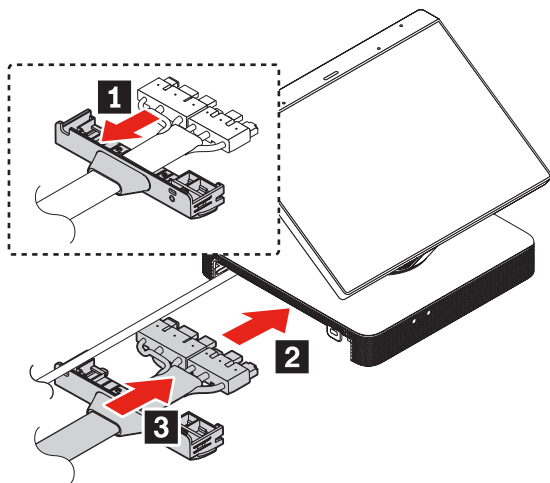
HDMI x3

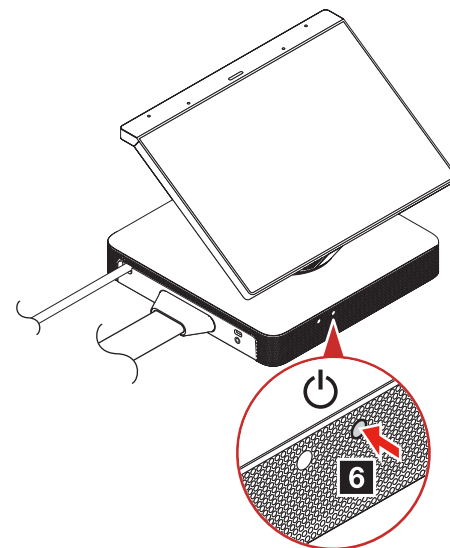
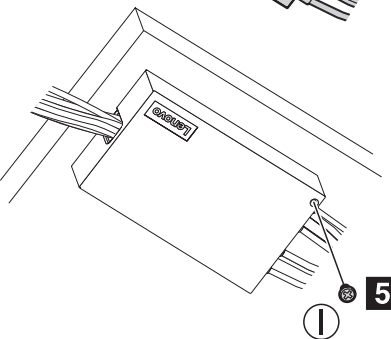
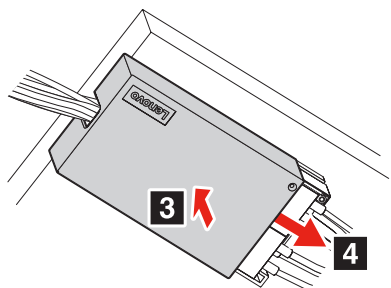
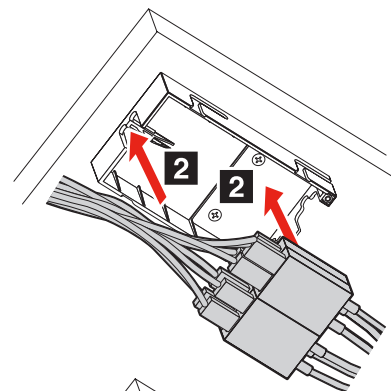
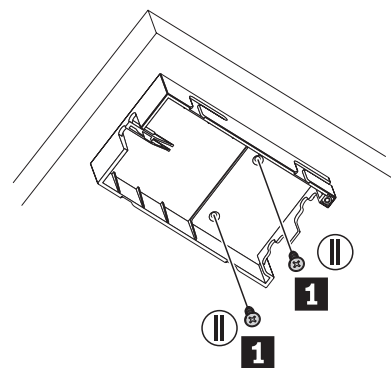


USB x4



HDMI 







<https://smartsupport.lenovo.com/contactus>



<https://smartsupport.lenovo.com/supportphonelist>



[https://www.lenovo.com/warranty/llw\\_02](https://www.lenovo.com/warranty/llw_02)   
<https://pcsupport.lenovo.com/warrantylookup>



<https://support.lenovo.com/HowToCreateLenovoRecovery>

## English

For more information about the hub, scan the QR code to view the *User Guide*.

### Safety, warranty, and support information



#### Plastic bag notice

**DANGER:** Plastic bags can be dangerous. Keep plastic bags away from babies and children to avoid danger of suffocation.

#### Lithium coin-cell battery notice

**DANGER:** Danger of explosion if battery is incorrectly replaced.

If the coin-cell battery is not a CRU, do not attempt to replace the coin-cell battery. Replacement of the battery must be done by a Lenovo-authorized repair facility or technician.

The Lenovo-authorized repair facilities or technicians recycle Lenovo batteries according to local laws and regulations. When replacing the lithium coin-cell battery, use only the same type or equivalent type that is recommended by the manufacturer. The battery contains lithium and can explode if not properly used, handled, or disposed of. Swallowing the lithium coin-cell battery will cause choking or severe internal burns in just two hours and might even result in death.

Keep batteries away from children. If the lithium coin-cell battery is swallowed or placed inside any part of the body, seek medical care immediately.

Do not:

- Throw or immerse into water
- Heat to more than 100°C (212°F)
- Repair or disassemble
- Leave in an extremely low air pressure environment
- Leave in an extremely high-temperature environment
- Crush, puncture, cut, or incinerate

Dispose of the battery as required by local ordinances or regulations.

The following statement applies to users in the state of California, U.S.A.

California Perchlorate Information:

Products containing manganese dioxide lithium coin-cell batteries may contain perchlorate.

Perchlorate Material - special handling may apply, see <https://www.dtsc.ca.gov/hazardouswaste/perchlorate>

### Compliance, recycling, and environmental information

#### Compliance information

This section shows the compliance information for specific countries or regions. The latest compliance information is available at <https://www.lenovo.com/compliance>.

#### Electromagnetic emission notices

This device has been tested and found to comply with the limits for a Class B digital device. The *User Guide* for this product provides the complete Class B compliance statements that are applicable to this device.

#### European Union (EU) / United Kingdom (UK) - Radio Equipment Compliance



EU contact:  
Lenovo (Slovakia), Landererova 12, 811 09 Bratislava, Slovakia



UK contact:  
Lenovo, Redwood, Crockford Lane, Basingstoke, RG24 8WQ, UK.

Hereby, Lenovo declares that the radio equipment type ThinkSmart Hub with wireless communications is in compliance with Directive 2014/53/EU, as well as UK Radio Equipment Regulations SI 2017 No. 1206. The full texts of the system declarations of conformity are available at <https://www.lenovo.com/us/en/compliance/eu-doc> for EU and <https://www.lenovo.com/us/en/compliance/uk-doc> for UK. This radio equipment operates with the following frequency bands and maximum radio-frequency power.

Technology	Frequency band [MHz]	Maximum transmit power
WLAN 802.11b/g/n	2400 - 2483.5	< 20 dBm
WLAN 802.11a/n/ac	5150 - 5725	< 23 dBm
WLAN 802.11a/n/ac	5725 - 5875	< 13.98 dBm
Bluetooth BR/EDR/LE	2400 - 2483.5	< 20 dBm

**Note:** Not all wireless bands may be enabled depending on your product configuration. Usage of this device is limited to indoor locations in the bands 5150 - 5350 MHz.

#### Radio frequency compliance information

Product models equipped with wireless communications comply with the radio frequency and safety standards of any country or region in which it has been approved for wireless use.

#### Recycling and environmental information

This section shows the recycling and environmental information for specific countries or regions.

Lenovo encourages owners of information technology (IT) equipment to responsibly recycle their equipment when it is no longer needed. Lenovo offers a variety of programs and services to assist equipment owners in recycling their IT products. For information on recycling Lenovo products, go to <https://www.lenovo.com/recycling>

For additional recycling and environmental statements, refer to your User Guide. The latest environmental information about our products is available at <https://www.lenovo.com/ecodeclaration>.

#### Important battery recycling and WEEE information



Don't dispose of your product or battery with your household waste. Refer to the *User Guide* for further information, or go to <https://www.lenovo.com/recycling>.

#### For additional legal notices, refer to the *User Guide* for your product.



Eurasian compliance mark



United States and Canada battery recycling mark for rechargeable lithium-ion battery



[https://support.lenovo.com/docs/thinksmart\\_hub](https://support.lenovo.com/docs/thinksmart_hub)



<https://smartsupport.lenovo.com/>

**Third Edition (August 2022)**  
© Copyright Lenovo 2021, 2022.

LIMITED AND RESTRICTED RIGHTS NOTICE: If data or software is delivered pursuant to a General Services Administration "GSA" contract, use, reproduction, or disclosure is subject to restrictions set forth in Contract No. GS-35F-05925. LENOVO, the LENOVO logo, THINKSMART, and the THINKSMART logo are trademarks of Lenovo. All other trademarks are the property of their respective owners.

