

# HP EliteBook 840 14 inch G11 Notebook PC

## The enterprise notebook that's anything but ordinary

Equip your high-producing teams with the AI-enhanced PC that delivers the power, security, and collaboration tools they need for working in the office or in a hybrid setting. The HP EliteBook 840 effectively meets the demands of multi-tasking teams across the globe.

### Engineered for long lasting productivity from anywhere

Empower your hybrid workforce with the elevated conferencing capabilities, easily managed security, and AI-driven performance from the latest Intel® Core™ processor<sup>2</sup> with an NPU<sup>3</sup> in the sleek HP EliteBook 840 purpose built for demanding enterprise workloads.

### Collaboration personalized to you

Move freely and interact naturally using speakers tuned by Poly Studio with AI Noise Reduction<sup>4</sup> and a 5MP camera, Dynamic Color Tuning<sup>4</sup>, and optional automatic framing.<sup>5</sup> Expand collaboration opportunities with optional high-speed 5G<sup>6</sup> connectivity.

### Protected by HP Wolf Security

HP Wolf Security for Business creates a hardware-enforced, always-on, resilient defense. From the BIOS to the browser, above, in, and below the OS, these constantly evolving solutions help protect your PC from modern threats.<sup>7</sup>

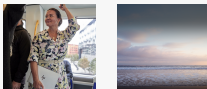


\*Product image may differ from actual product

## Sustainability in action

### Help protect our shared future

This PC contains at least 75-percent post-consumer recycled plastic in the bezel<sup>8</sup> and provides power data tracking and suggestions to reduce energy use representing the latest in responsible design from HP.<sup>9</sup>



# HP EliteBook 840 14 inch G11 Notebook PC

## Featuring

### HP Recommends Windows 11 Pro for business with Copilot in Windows

Work anywhere without compromising on performance with Windows 11<sup>1</sup> and HP collaboration, security, and connectivity technology. Summarize and rewrite content, get relevant content recommendations, and stay organized with Copilot in Windows.<sup>10</sup>

### Intel® powers PCs enhanced by AI

Free up time to focus on what matters with an Intel® Core™ 2 processor purposely built for the next era of AI software. Three compute engines<sup>3</sup> manage AI workloads, help improve video conferencing, and allow for advanced content creation.

### Optimize PC performance

Work without distraction with HP Smart Sense<sup>11</sup> which makes automatic adjustments keeping your system cool and quiet and lets you enable performance mode when you need it most.

### Easy battery management

Manage and monitor your battery's performance and condition and customize charging options with the easy-to-use HP Power Manager dashboard.<sup>4</sup>

### Balanced light for a clear image

Make sure you can clearly be seen on calls with Dynamic Color Tuning<sup>4</sup> that adjusts camera auto-color and auto-white balance for a more natural color when you are in front of a monochromatic background.

### Hear and be heard

Dynamic Voice Leveling<sup>4</sup> automatically optimizes voice clarity within 3-meters of the PC. AI Noise Reduction<sup>4</sup> uses noise-filtering technology to enhance audio conferencing experiences.

### Believing is seeing

Get captivating definition and color on the optional 14-inch diagonal QHD display.<sup>12</sup>

### Automatic framing

Move around a little without losing viewers' attention during video calls with automatic framing.<sup>5</sup> The optional 5MP IR camera and audio follow you or multiple presenters as they move within the camera's frame.

### See colors as they should be

Make the color of your screen look consistent in any light with Adaptive Color<sup>11</sup> that adjusts your display automatically to the ambient light in the room to represent the true color of the content being displayed.

### Comfortable viewing

Optional TÜV certified HP Eye Ease low blue light anti-glare panels<sup>13</sup> help remove blue light waves while preserving vivid color accuracy.

### Stay connected

Your "office" can be where you need it, letting you connect almost anywhere with optional support for up to 5G wireless broadband technology with 4x4 antennas that can deliver fast download and upload speeds.<sup>6</sup>

### Fast and efficient wireless LAN

The portability of your PC and the reliability of a fast connection determines where you can work. Get a fast and reliable connection in dense wireless environments with gigabit data rate Wi-Fi 6E.<sup>14,15</sup>



# HP EliteBook 840 14 inch G11 Notebook PC

## Technical specifications

<b>Available Operating Systems</b>	Windows 11 Pro <sup>1</sup> Windows 11 Home - HP recommends Windows 11 Pro for business <sup>1</sup> Windows 11 Home Single Language - HP recommends Windows 11 Pro for business <sup>1</sup> Windows 11 Pro Education <sup>1</sup> Windows 11 Pro (Windows 11 Enterprise or Windows 10 Enterprise available with a Volume Licensing Agreement) <sup>1</sup>
<b>Processor family</b>	Intel® Core™ Ultra 5 processor Intel® Core™ Ultra 7 processor
<b>Available Processors</b> <sup>2,3,4,35</sup>	Intel® Core™ Ultra 7 155H (up to 3.8 GHz E-core Max Turbo frequency, up to 4.8 GHz P-core Max Turbo frequency, 24 MB L3 cache, 6 P-cores and 8 E-cores, 22 threads) Intel® Core™ Ultra 5 125H (up to 3.6 GHz E-core Max Turbo frequency, up to 4.5 GHz P-core Max Turbo frequency, 18 MB L3 cache, 4 P-cores and 8 E-cores, 18 threads) Intel® Core™ Ultra 7 165H (up to 3.8 GHz E-core Max Turbo frequency, up to 5.0 GHz P-core Max Turbo frequency, 24 MB L3 cache, 6 P-cores and 8 E-cores, 22 threads) Intel® Core™ Ultra 7 165U (up to 3.8 GHz E-core Max Turbo frequency, up to 4.9 GHz P-core Max Turbo frequency, 12 MB L3 cache, 2 P-cores and 8 E-cores, 14 threads) Intel® Core™ Ultra 7 155U (up to 3.8 GHz E-core Max Turbo frequency, up to 4.8 GHz P-core Max Turbo frequency, 12 MB L3 cache, 2 P-cores and 8 E-cores, 14 threads) Intel® Core™ Ultra 5 135H (up to 3.6 GHz E-core Max Turbo frequency, up to 4.6 GHz P-core Max Turbo frequency, 18 MB L3 cache, 4 P-cores and 8 E-cores, 18 threads) Intel® Core™ Ultra 5 135U (up to 3.6 GHz E-core Max Turbo frequency, up to 4.4 GHz P-core Max Turbo frequency, 12 MB L3 cache, 2 P-cores and 8 E-cores, 14 threads) Intel® Core™ Ultra 5 125U (up to 3.6 GHz E-core Max Turbo frequency, up to 4.3 GHz P-core Max Turbo frequency, 12 MB L3 cache, 2 P-cores and 8 E-cores, 14 threads)
<b>Neural Processing Unit</b>	Intel® AI Boost
<b>Maximum memory</b>	64 GB DDR5-5600 MT/s RAM; (Transfer rates up to 5600 MT/s.) Dual channel support. <sup>5</sup>
<b>Memory slots</b>	2 SODIMM
<b>Internal storage</b>	512 GB up to 2 TB PCIe® Gen4x4 NVMe™ M.2 SSD TLC <sup>6</sup> 256 GB up to 1 TB PCIe® NVMe™ Value SSD <sup>6</sup> up to 512 GB PCIe® Gen4x4 NVMe™ M.2 SED SSD TLC <sup>6</sup> up to 256 GB PCIe® NVMe™ M.2 SED SSD <sup>6</sup>
<b>Display size (diagonal, metric)</b>	35.6 cm (14")
<b>Display</b> <sup>15,16,17,18,19</sup>	35.6 cm (14") diagonal, WUXGA (1920 x 1200), IPS, anti-glare, 400 nits, low power, 100% sRGB with HP Eye Ease; 35.6 cm (14") diagonal, WQXGA (2560 x 1600), IPS, micro-edge, anti-glare, 500 nits, 100% sRGB; 35.6 cm (14") diagonal, WUXGA (1920 x 1200), IPS, anti-glare, 300 nits, 45% NTSC; 35.6 cm (14") diagonal, WUXGA (1920 x 1200), touch, IPS, anti-glare, 300 nits, 45% NTSC; 35.6 cm (14") diagonal, WUXGA (1920 x 1200), IPS, anti-glare, 800 nits, 100% sRGB, HP Sure View Reflect integrated privacy screen with HP Eye Ease
<b>Available Graphics</b>	Integrated: Intel® Arc™ Graphics; Intel® Graphics <sup>41</sup> (Support HD decode, DX12, HDMI 2.1.)
<b>Audio</b>	Audio by Poly Studio, dual stereo speakers with discrete amplifiers, integrated dual array microphones
<b>Ports and connectors</b>	2 Thunderbolt™ 4 with USB Type-C® 40Gbps signaling rate (USB Power Delivery, DisplayPort™ 1.4); 2 USB Type-A 5Gbps signaling rate (1 charging, 1 power); 1 HDMI 2.1; 1 stereo headphone/microphone combo jack <sup>11</sup> ; (HDMI cable sold separately); Optional Ports: 1 Smartcard reader (optional); 1 External Nano SIM slot for WWAN <sup>12</sup>
<b>Input devices</b>	HP Premium Keyboard - spill-resistant with optional backlit keyboard and Durakeys <sup>51</sup> ; Clickpad with multi-touch gesture support, taps enabled as default; Microsoft Precision Touchpad; Hall Sensor; Thermal sensor; Adaptive color sensor; HP Tamper Lock <sup>42</sup> ; Ambient light sensor
<b>Communications</b>	(Compatible with Miracast-certified devices. <sup>9</sup> ); Intel® Wi-Fi 6E AX211 (2x2) and Bluetooth® 5.3 wireless card, vPro®; Intel® Wi-Fi 6E AX211 (2x2) and Bluetooth® 5.3 wireless card, non-vPro®; Intel® Wi-Fi 7 BE200 (2x2) and Bluetooth® 5.4 wireless card, vPro®; Intel® Wi-Fi 7 BE200 (2x2) and Bluetooth® 5.4 wireless card, non-vPro®; Qualcomm® 9205 LTE Cat-M1; HP 4000 4G LTE Advanced Pro; HP 5000 5G Solution
<b>Camera</b>	5 MP camera with integrated dual array microphones <sup>14</sup>
<b>Software</b>	Adobe offer; Bing Search for IE11; Microsoft 365 and Office (sold separately and Internet access required for activation); HP Connection Optimizer; HP Easy Clean; HP Easy Clean Keyboard Driver; HP Hotkey Support; HP MAC Address Manager; HP Notifications; HP PC Hardware Diagnostics UEFI; HP PC Hardware Diagnostics Windows; HP Power Manager; HP Smart Support <sup>57</sup> ; HP Privacy Settings; HP Support Assistant <sup>21</sup> ; HSA Fusion for Commercial; HP Services Scan <sup>20</sup> ; Copilot in Windows with Copilot key <sup>45</sup>
<b>Security management</b>	HP Client Security Manager; HP Sure Admin <sup>25</sup> ; HP Sure Click <sup>26</sup> ; HP Sure Recover Gen6 <sup>27</sup> ; HP Sure Run Gen5 <sup>28</sup> ; HP Sure Sense <sup>29</sup> ; HP Sure Start Gen7; HP Tamper Lock <sup>42</sup> ; Secured-Core PC Enable <sup>30</sup> ; Windows Hello Enhanced Sign-in Security (ESS) Enable; Absolute persistence module <sup>31</sup> ; BIOS Update via Network; HP BIOSphere Gen6 <sup>32</sup> ; HP DriveLock and Automatic DriveLock; Secure Erase <sup>33</sup> ; HP Wake on WLAN; Security lock slot <sup>43</sup>
<b>Security Software Licenses</b>	HP Wolf Pro Security Edition <sup>56</sup>
<b>Fingerprint reader</b>	Fingerprint sensor (select models)



# HP EliteBook 840 14 inch G11 Notebook PC

## Technical specifications

<b>Management features</b>	HP Client Catalog (download); HP Client Management Script Library (download); HP Cloud Recovery <sup>22</sup> ; HP Connect for Microsoft Endpoint Manager; HP Driver Packs (download); HP Image Assistant Gen 5 (download); HP Manageability Integration Kit (download) <sup>23</sup> ; HP Patch Assistant (download) <sup>24</sup>
<b>Power</b>	HP 65 W USB Type-C® slim adapter; 65 W USB Type-C® adapter <sup>38</sup>
<b>Battery type</b>	HP Long Life 3-cell, 56 Wh Li-ion polymer <sup>37</sup> ; Battery is internal and not replaceable by customer. Serviceable by warranty. Fast charging 50% in 30 minutes. <sup>36</sup>
<b>Battery life</b>	Up to 15 hours and 15 minutes <sup>47</sup>
<b>Dimensions</b>	31.56 x 22.43 x 1.16 cm (front); 31.56 x 22.43 x 1.61 cm (rear); (Front height measurement is near the front edge where the chassis bottom cover taper begins. Back height measurement is near the back edge where the chassis bottom cover taper ends.); 2.71 x 17.67 x 12 in 6.9 x 44.9 x 30.5 cm (Package)
<b>Weight</b>	Starting at 1.41 kg; (Weight will vary by configuration. Does not include power adapter.)
<b>Ecolabels</b>	EPEAT® registered configurations available; TCO Certified configurations available; EPEAT® Gold registered in the U.S. <sup>39</sup>
<b>Energy star certified</b>	ENERGY STAR® certified
<b>Certification and compliance</b>	GS Mark; CSA/UL 62368-1; FCC/ICES/CISPR/VCCI; CE Marking; China CCC/SRRC; Taiwan BSMI/NCC; Korea KCC/KC/KES; Ukraine NSoC/TEC; EAEU Compliance; Saudi Arabian Compliance; Low blue light; WW RoHS
<b>Sustainable impact specifications</b>	Low halogen <sup>40</sup>
<b>Warranty</b>	1-year warranty and 90 day software limited warranty options depending on country. Batteries have a default one year limited warranty. Refer to <a href="http://www.hp.com/support/batterywarranty/">http://www.hp.com/support/batterywarranty/</a> for additional battery information. On-site service and extended coverage is also available. HP Care Pack Services are optional extended service contracts that go beyond the standard limited warranties. To choose the right level of service for your HP product, use the HP Care Pack Services Lookup Tool at: <a href="http://www.hp.com/go/cpc">http://www.hp.com/go/cpc</a> .



# HP EliteBook 840 14 inch G11 Notebook PC

## Footnotes

### Messaging Footnotes

- <sup>1</sup> Not all features are available in all editions or versions of Windows. Systems may require upgraded and/or separately purchased hardware, drivers, software or BIOS update to take full advantage of Windows functionality. Windows is automatically updated and enabled. High speed internet and Microsoft account required. ISP fees may apply and additional requirements may apply over time for updates. See <http://www.windows.com>.
- <sup>2</sup> Multicore is designed to improve performance of certain software products. Not all customers or software applications will necessarily benefit from use of this technology. Performance and clock frequency will vary depending on application workload and your hardware and software configurations. Intel's numbering, branding and/or naming is not a measurement of higher performance.
- <sup>3</sup> Features and software that require an NPU may require software purchase, subscription or enablement by a software or platform provider, and third-party software may have specific configuration or compatibility requirements. Performance varies by use, configuration, and other factors.
- <sup>4</sup> Requires myHP application and Windows OS.
- <sup>5</sup> Automatic framing is an optional feature that requires Windows 11 OS and a processor equipped with an NPU.
- <sup>6</sup> 5G module is optional and must be configured at the factory. Module designed for 5G SA (standalone), and 5G NR NSA (non-standalone) networks as carriers deploy Evolved-Universal Terrestrial Radio Access New Radio Dual Connectivity (ENDC) with both 100MHz of 5G NR and LTE channel bandwidth, using 256QAM 4x4 as defined by 3GPP. Module requires activation and separately purchased service contract. Check with service provider for coverage and availability in your area. Data connection, upload and download speeds will vary due to network, location, environment, network conditions, and other factors. Backwards compatible to 4G LTE and 3G HSPA technologies. 5G module planned to be available in select platforms and select countries, where carrier supported.
- <sup>7</sup> HP Wolf Security for Business requires Windows 10 or 11 Pro and higher, includes various HP security features and is available on HP Pro, Elite, Workstation, and RPOS products. See product details for included security features.
- <sup>8</sup> Recycled plastic content percentage is based on the definition set in the IEEE 16801:2018 standard.
- <sup>9</sup> Energy Consumption Meter requires Window 10 and registration for the Workforce Experience platform at <https://admin.hp.com>. Some features and capabilities may require additional purchase of HP services and/or commercial hardware capable of supporting the HP Insights agent for Windows, Mac, & Android. Activation and restrictions may apply. Select HP Workforce Solutions require an HP Insights agent for Windows, Mac, & Android, available for download at <https://admin.hp.com/software>. For full system requirements and services that require the agent, please visit <https://admin.hp.com/requirements>. The agent collects telemetry and analytics around devices and applications that integrate into the Workforce Experience platform and is not sold as a standalone service. Internet access with connection to the Workforce Experience platform is required. HP follows stringent GDPR privacy regulations, and the platform is ISO27001, ISO27701, ISO27017 and SOC2 Type2 certified for Information Security. Fleet management requires HP Proactive Insights.
- <sup>10</sup> Requires Windows 11. Some features require an NPU. Timing of feature delivery and availability varies by market and device. Requires Microsoft account to log in. Where Microsoft in Windows is not available, the Copilot key will lead to the Bing search engine. See <http://aka.ms/WindowsAIFeatures>.
- <sup>11</sup> Requires Windows 11 OS.
- <sup>12</sup> Quad HD (QHD) content required to view QHD images. Optional feature that must be configured at time of purchase.
- <sup>13</sup> Wi-Fi 6E requires a Wi-Fi 6E router, sold separately to function in the 6GHz band. Availability of public wireless access points limited. Wi-Fi 6E is backwards compatible with prior 802.11 specs. And available in countries where Wi-Fi 6E is supported.
- <sup>14</sup> Wi-Fi<sup>®</sup> supporting gigabit data rate is achievable with Wi-Fi 6E (802.11ax) when transferring files between two devices connected to the same router. Requires a wireless router, sold separately, that supports 160MHz channels.

### Specification Footnotes

- <sup>1</sup> Not all features are available in all editions or versions of Windows. Systems may require upgraded and/or separately purchased hardware, drivers, software or BIOS update to take full advantage of Windows functionality. Windows is automatically updated and enabled. High speed internet and Microsoft account required. ISP fees may apply and additional requirements may apply over time for updates. See <http://www.windows.com>.
- <sup>2</sup> Multicore is designed to improve performance of certain software products. Not all customers or software applications will necessarily benefit from use of this technology. Performance and clock frequency will vary depending on application workload and your hardware and software configurations. Intel's numbering, branding and/or naming is not a measurement of higher performance.
- <sup>3</sup> Processor speed denotes maximum performance mode; processors will run at lower speeds in battery optimization mode.
- <sup>4</sup> Intel<sup>®</sup> Turbo Boost performance varies depending on hardware, software and overall system configuration. See [www.intel.com/technology/turboboost](http://www.intel.com/technology/turboboost) for more information.
- <sup>5</sup> Due to the non-industry standard nature of some third-party memory modules, we recommend HP branded memory to ensure compatibility. If you mix memory speeds, the system will perform at the lower memory speed.
- <sup>6</sup> For storage drives, GB = 1 billion bytes. TB = 1 trillion bytes. Actual formatted capacity is less. Up to 30 GB (for Windows 10 and 11) is reserved for system recovery software.
- <sup>7</sup> Wi-Fi 6E requires a Wi-Fi 6E router, and Windows 11, to function in the 6GHz band. Availability of public wireless access points limited. Wi-Fi 6E is backwards compatible with prior 802.11 specs. And available in countries where Wi-Fi 6E is supported.
- <sup>8</sup> Miracast is a wireless technology your PC can use to project your screen to TVs, projectors, and streaming.
- <sup>9</sup> WWAN module is an optional feature, requires factory configuration and requires separately purchased service contract. Check with service provider for coverage and availability in your area. Connection speeds will vary due to location, environment, network conditions, and other factors. 4G LTE not available on all products, in all regions.
- <sup>10</sup> 5G module is optional and must be configured at the factory. Module designed for 5G NR NSA (non-standalone) networks as carriers deploy Evolved-Universal Terrestrial Radio Access New Radio Dual Connectivity (ENDC) with both 100MHz of 5G NR and LTE channel bandwidth, using 256QAM 4x4 as defined by 3GPP. Module requires activation and separately purchased service contract. Check with service provider for coverage and availability in your area. Data connection, upload and download speeds will vary due to network, location, environment, network conditions, and other factors. Backwards compatible to 4G LTE and 3G HSPA technologies. 5G module planned to be available in select platforms and select countries, where carrier supported.
- <sup>11</sup> USB 20Gbps speed is not available with Thunderbolt<sup>™</sup> 4.
- <sup>12</sup> SIM slot is not user accessible without WWAN configuration.
- <sup>13</sup> Sold separately or as an optional feature.
- <sup>14</sup> WUXGA content required to view WUXGA images.
- <sup>15</sup> Resolutions are dependent upon monitor capability, and resolution and color depth settings.
- <sup>16</sup> HP Sure View Reflect integrated privacy screen is an optional feature that must be configured at purchase and is designed to function in landscape orientation.
- <sup>17</sup> Actual brightness will be lower with touchscreen or Sure View.
- <sup>18</sup> All specifications represent the typical specifications provided by HP's component manufacturers; actual performance may vary either higher or lower.
- <sup>19</sup> HP Services Scan is preinstalled and/or provided thru Windows Update and checks for service entitlement on each hardware device and downloads the HP Insights agent automatically. To disable this feature, please follow the instructions at <http://www.hpdaas.com/requirements>. The HP Insights agent is a telemetry and analytics platform that provides critical data around devices and applications and is not sold as a standalone service. Select HP Workforce Solutions require an HP Insights agent for Windows, Mac, & Android, available for download at <https://admin.hp.com/software>. For full system requirements and services that require the agent, please visit <https://admin.hp.com/requirements>. The agent collects telemetry and analytics around devices and applications that integrate into the Workforce Experience platform and is not sold as a standalone service. Internet access with connection to the Workforce Experience platform is required. HP follows stringent GDPR privacy regulations, and the platform is ISO27001, ISO27701, ISO27017 and SOC2 Type2 certified for Information Security. Not available in China.
- <sup>20</sup> HP Support Assistant requires Windows and Internet access.
- <sup>21</sup> HP Cloud Recovery is available for Z by HP, HP Elite and Pro desktops and laptops PCs with Intel<sup>®</sup> or AMD processors and requires an open, wired network connection. Note: You must back up important files, data, photos, videos, etc. before use to avoid loss of data. Detail please refer to: <https://support.hp.com/us-en/document/c05115630>.
- <sup>22</sup> HP Manageability Integration Kit can be downloaded from <http://www.hp.com/go/clientmanagement>.
- <sup>23</sup> HP Patch Assistant available on select HP PCs with the HP Manageability Kit that are managed through Microsoft System Center Configuration Manager. HP Manageability Integration Kit can be downloaded from <http://www8.hp.com/us/en/ads/clientmanagement/overview.html>.
- <sup>24</sup> HP Sure Admin requires HP G8 or newer platforms, Windows 10 or higher, HP BIOS, HP Manageability Kit or KMS Service from <http://www.hp.com/go/clientmanagement> and HP Sure Admin Local Access Authenticator smartphone app from the Android or Apple store.
- <sup>25</sup> HP Sure Click requires Windows 10 and higher. See <https://bit.ly/2PrLT6A>, SureClick for complete details.
- <sup>26</sup> HP Sure Recover is available on select HP PCs and requires Windows 10 or 11 and an open network connection. You must back up important files, data, photos, videos, etc. before using HP Sure Recover to avoid loss of data.
- <sup>27</sup> HP Sure Run Gen5 is available on select HP PCs and requires Windows 10 and higher.
- <sup>28</sup> HP Sure Sense requires Windows 10 and higher. See product specifications for availability. On units with WWAN shipping to China, HP Sure Sense is only available via Softpaq download.
- <sup>29</sup> Secured-Core PC Enable requires an Intel<sup>®</sup> vPro<sup>™</sup>, AMD Ryzen<sup>™</sup> Pro processor or Qualcomm<sup>™</sup> processor with SD850 or higher and requires 8 GB or more system memory. Secured-core PC is enabled from the factory.
- <sup>30</sup> Absolute firmware module is shipped turned off and can only be activated with the purchase a license subscription and full activation of the software agent. License subscriptions can be agreed for terms ranging multiple years. Service is limited, check with Absolute for availability outside the U.S. Certain conditions apply. For full details visit: <https://www.absolute.com/about/legal/agreements/absolute/>
- <sup>31</sup> HP BIOSphere Gen6 features may vary depending on the platform and configuration.
- <sup>32</sup> HP Secure Erase implements the methods outlined in the National Institute of Standards and Technology Special Publication 800-88 "Clear" sanitation method. HP Secure Erase does not support platforms with Intel<sup>®</sup> Optane<sup>™</sup>.
- <sup>33</sup> HP Fingerprint Sensor is an optional feature and requires configuration at purchase.
- <sup>34</sup> Features and software that require a NPU may require may require software purchase, subscription or enablement by a software or platform provider, and third party software may have specific configuration or compatibility requirements. Performance varies by use, configuration, and other factors.
- <sup>35</sup> Recharges up to 50% within 30 minutes when the system is off or in standby mode when used with the power adapter provided with the notebook. Power adapter minimum of 65 watts required for battery capacities 56Whr or less. Power adapter minimum of 100 watts required for battery capacities greater than 56Whr and less than 83Whr. Power adapter minimum of 120 watts required for battery capacities greater than 83Whr and less than 100Whr. After charging has reached 90% capacity, charging speed will return to normal. Charging time may vary +/-10% due to System tolerance.
- <sup>36</sup> For new batteries, actual battery Watt-hours (Wh) may differ from the design capacity and may have a full charge capacity that differs by up to 10, which is typical for lithium-ion batteries. Battery capacity naturally decreases over time and with use, depending on several factors such as battery health management settings, shelf life, temperature, environment, loaded apps, features, system configuration, and power settings.
- <sup>37</sup> Availability may vary by country.
- <sup>38</sup> Based on US EPEAT<sup>™</sup> registration according to IEEE 16801:2018 EPEAT<sup>™</sup>. Status varies by country. Visit [www.epeat.net](http://www.epeat.net) for more information.
- <sup>39</sup> External power supplies, power cords, cables and peripherals are not Low Halogen. Service parts obtained after purchase may not be Low Halogen.
- <sup>40</sup> Intel<sup>®</sup> ARC Graphics capabilities require system to be configured with Intel<sup>®</sup> Core<sup>™</sup> Ultra 5 or Ultra 7 processors and dual channel memory. Single channel memory will only function as Intel<sup>®</sup> Graphics.
- <sup>41</sup> HP Tamper Lock must be enabled by the customer or your administrator.
- <sup>42</sup> Lock is sold separately.
- <sup>43</sup> LPWAN (also called Mobile Narrowband) support HP Protect & Trace with Wolf Connect service through the subscription term, but do not support mobile broadband use.
- <sup>44</sup> Requires Windows 11 and an NPU. Timing of feature delivery and availability varies by market and device. Requires Microsoft account to log in. Where Microsoft in Windows is not available, the Copilot key will lead to the Bing search engine. See <http://aka.ms/WindowsAIFeatures>.
- <sup>45</sup> Windows MM18 battery life will vary depending on various factors including product model, configuration, loaded applications, features, use, wireless functionality, and power management settings. The maximum capacity of the battery will naturally decrease with time and usage. See [www.hp.com](http://www.hp.com) for additional details.
- <sup>46</sup> Backlit keyboard is an optional feature.
- <sup>47</sup> HP Wolf Pro Security Edition is available preloaded on select SKUs, and, depending on the HP product purchased, includes a license with a term length communicated to you at purchase and in your order confirmation email. The HP Wolf Pro Security Edition software is licensed under the license terms of the HP Wolf Security Software - End-User License Agreement (EULA) that can be found at: [https://support.hp.com/us-en/document/ish\\_3875769-3873014-16](https://support.hp.com/us-en/document/ish_3875769-3873014-16) as that EULA is modified by the following: 7. Term. Unless otherwise terminated earlier pursuant to the terms contained in this EULA, the license for the HP Wolf Pro Security Edition is effective upon 4 months after the date the HP Product was shipped by HP and will continue for the term communicated to you at purchase and in your order confirmation email ("Initial Term"). At the end of the Initial Term you may either (a) purchase a renewal license for the HP Wolf Pro Security Edition from HP.com, HP Sales or an HP Channel Partner, or (b) continue using the standard versions of HP Sure Click and HP Sure Sense at no additional cost with no future software updates or HP Support. Notwithstanding the foregoing, the license shall expire no later than one year after the fixed term of the subject license ends.
- <sup>48</sup> HP Smart Support requires the HP agent to be installed. For more information about how to enable or to download HP Smart Support, please visit <http://www.hp.com/smart-support>. HP Services Scan is provided thru Windows Update and will check entitlement on each hardware device to determine if an HP agent-enabled service has been purchased, and will download applicable software automatically. The HP agent is a telemetry and analytics platform that provides critical data around devices and applications and is not sold as a standalone service. HP follows stringent GDPR privacy regulations and is ISO27001, ISO27701, ISO27017 and SOC2 Type2 certified for Information Security. Internet access is required. For full system requirements or to disable this feature, please visit <http://www.hpdaas.com/requirements>.
- <sup>49</sup> Depending on the version available for your device and the setting you select, HP Battery Health Manager (BHM) will use a proprietary set of algorithms to optimize battery health during the life of the battery. New Commercial Notebooks come equipped with BHM set to "Let HP Manage My Battery Health" as the default. This setting will reduce charge capacity over time to optimize battery health and mitigate factors that can accelerate battery degradation. As a result of this reduction, battery runtime will decrease over time as available charge capacity is reduced. HP may, at any time, update HP Battery Health Manager to improve available settings, functionality, and performance. Refurbished products may have customized default settings to optimize user experience. For additional information on updating or modifying HP Battery Health Manager settings, please go to [HP.COM/SUPPORT/BATTERY](http://HP.COM/SUPPORT/BATTERY).

© Copyright 2025 HP Development Company, L.P. The information contained herein is subject to change without notice. The only warranties for HP products and services are set forth in the express warranty statements accompanying such products and services. Nothing herein should be construed as constituting an additional warranty. HP shall not be liable for technical or editorial errors or omissions contained herein. Intel, Core and Intel vPro are trademarks or registered trademarks of Intel Corporation or its subsidiaries in the United States and other countries. Bluetooth is a trademark owned by its proprietor and used by HP Inc. under license. DisplayPort<sup>™</sup> and the DisplayPort<sup>™</sup> logo are trademarks owned by the Video Electronics Standards Association (VESA<sup>®</sup>) in the United States and other countries. USB Type-C<sup>®</sup> and USB-C<sup>®</sup> are registered trademarks of USB Implementers Forum. ENERGY STAR is a registered trademark of the U.S. Environmental Protection Agency. All other trademarks are the property of their respective owners.

May 2025

