

PHILIPS



Face and Body

OneBlade Pro 360

Rechargeable Li-Ion battery

12-length precision comb

Wet and Dry use

Battery indicator



QP6507/23

Trim edge and shave any length of hair effortlessly*

Designed to cut hair, not skin

Philips OneBlade Pro Face + Body trims, edges and shaves any length of hair. You get a blade for your face and one with a skin guard for your body. Forget about using multiple tools. OneBlade does it all.

Easy to use

- Click-on skin guard for sensitive areas
- Click-on body comb (3 mm)
- Charge anytime, anywhere
- Blade that doesn't fade easily
- Fully waterproof
- 90 min Li-Ion battery
- LED light shows battery status

Comfortable shave

- Unique OneBlade Technology
- Innovative 360 blade
- Trim it down
- Shave it off

Sharp edges

Even trim

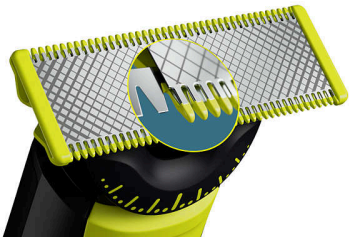
OneBlade Pro 360

Face and Body

QP6507/23

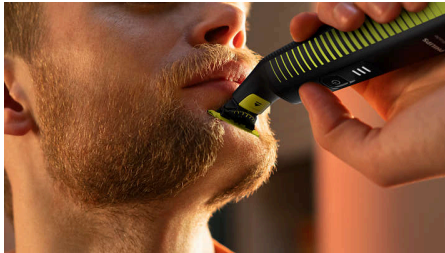
Highlights

Unique OneBlade Technology



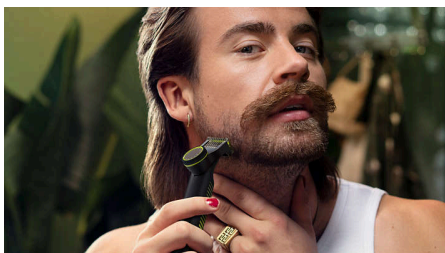
Philips OneBlade has revolutionary technology designed for facial grooming. It can shave any length of hair. Its dual-protection system—a glide coating combined with rounded tips—makes shaving easier and more comfortable. Its shaving technology features a fast-moving cutter (12000 x per min) so it's efficient - even on longer hairs.

Innovative 360 blade



Innovative 360 Blade moves in all directions and adjusts to every curve of your face to maintain constant skin contact, while enabling control at all times. Easily trim and shave even the most difficult-to-reach areas with fewer passes and greater comfort*.

Trim it down



Trim your beard to an even length with the included adjustable precision comb. Dial up one of the 12 lock-in length settings to get everything from a 5 o'clock shadow, to a tight trim, to a longer beard style.

Trim Away



Trim your beard to an even length with the included adjustable precision comb. Dial up one of the 12 lock-in length settings to get everything from a 5 o'clock shadow, to a tight trim, to a longer beard style.

Edge it up



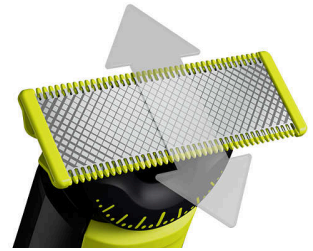
Create precise edges with the dual-sided blade. You can shave in either direction to get great visibility and see every hair that you're cutting. Line up your style in seconds!

Shave it off



OneBlade doesn't shave as close as a traditional blade - so your skin stays comfortable. Go against the grain and shave off any length of hair easily.

Dual-sided blade



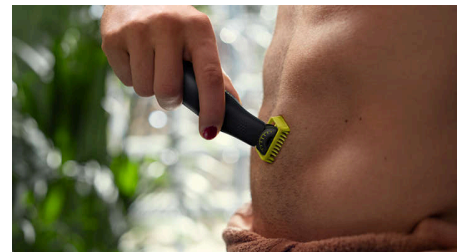
OneBlade follows the contours of your face, allowing you to easily and comfortably shave all areas. Use the dual-sided blade to style your edges and create clean lines by moving the blade in any direction.

Click-on skin guard



Attach the skin guard for an extra layer of protection on sensitive areas.

Click-on body comb



Attach the body comb (3 mm) for an easy trim in any direction.

USB-A charging



Can be charged at home or on the road, perfect for your daily routine and for travel.

Highlights

Blade that doesn't fade easily



Stainless steel blade that lasts up to 4 months of use** to keep that fresh feel. An eject icon will appear on the blade when the blade is worn out.

Wet and dry



OneBlade is fully waterproof (IPX7), so it is easy to clean: just rinse it under the tap. You can shave wet or dry, even in the shower - whichever you prefer. No shaving foam needed.

Battery indicator



Make sure that your OneBlade is always ready to go by checking the battery indicator. It alerts you while in use when your battery is low, and indicates charging progress when plugged in.

90 min Li-Ion battery



Rechargeable Li-Ion battery delivers 90 minutes of constant styling power after a 1-hour charge.

Specifications

Trimming and shaving performance

Shaving system: Contour-following technology, Dual protection system, 360 Blade

Trimming system: Contour-following technology

Accessories

Comb: 12-length comb (0.5 - 9 mm), Click-on skin guard, Click-on body comb

Maintenance: Protection cap

Extra replaceable blade

Power

Charging: 1 hour full charge

Battery type: Li-Ion

Run time: 90 minutes

Automatic voltage: 100-240 V

Max power consumption: 5.4 W

Design

Handle: Ergonomic grip and handling

Colour: Black

Service

Replacement head: Replace every 4 months**, QP210, QP220, QP230, QP610, QP620, QP410, QP420

2 year warranty: 2-year warranty on the handle

Ease of use

Charging: USB-A Charging (5 V⁻ / ≥1 A)

Display: 3 LED battery indicator

Wet & Dry

Rechargeable

USB-A charging: Power adapter not included

