

## 1. Disassembly Procedures:

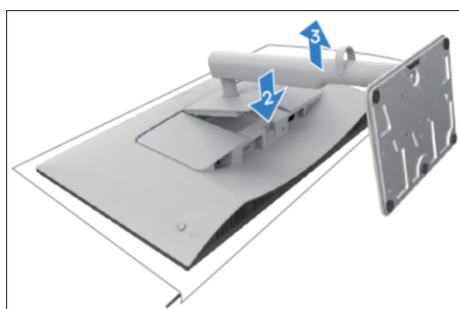
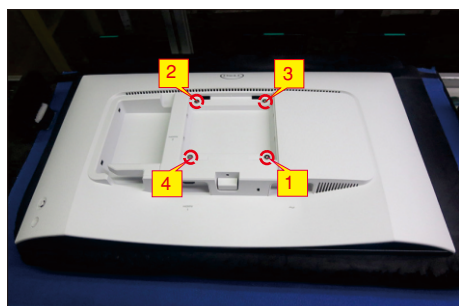
## S1 Turn off power.



## S2 Unplug external cables(power cable and video cable) from the monitor.

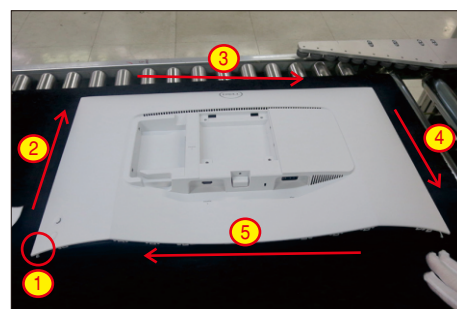


## S3 Remove stand from the product.(Press the stand release button, lift the stand up and away from the monitor)

S4 Use a Philips-head screwdriver to remove 4pcs screws for unlocking rear cover with assembled unit.  
(No.1~4 screw size=M4x11; Torque=10±1kgfxcmm)

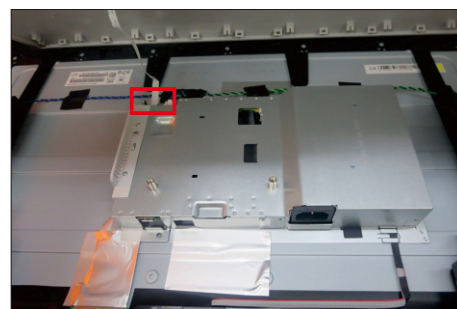
Use a mylar sheet to insert the left-bottom corner to release the rear cover, then wedge your fingers between the rear cover and the middle bezel of the monitor to release the rear cover, then use one hand to press the middle bezel, the other hand to pull up carefully the rear cover in order of arrow preference for unlocking mechanisms of rear cover.

## S5



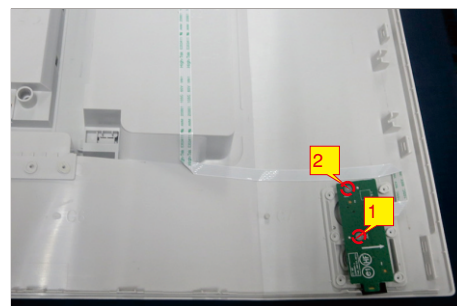
## S6

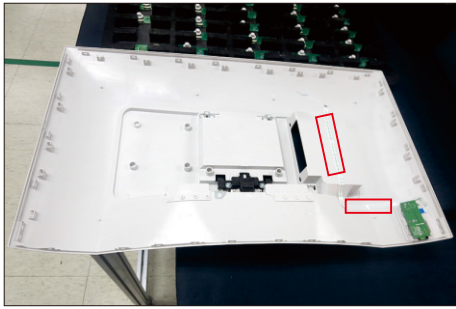
Lift the rear cover up carefully. Disconnect the joystick cable from the connectors of the interface board, and then remove the rear cover and put it aside for later disassembling.



## S7

Use a Philips-head screwdriver to remove 2pcs screws for unlocking the joystick key board unit, then tear off the tapes and release the USB board.  
(No.1~2 screw size=M2x3.3,Torque=1±0.2kgfxcmm)

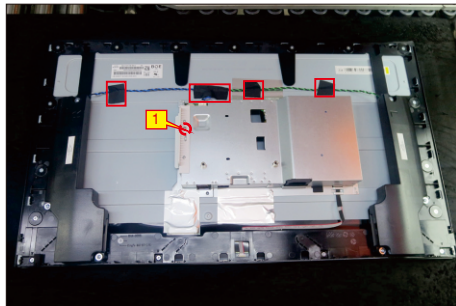




S8

Use a Philips-head screwdriver to remove 1pcs screw for unlocking the IO cover, then release the IO cover from the hooks of the bracket. Tear off 4pcs acetate tapes to release speakers' cables.

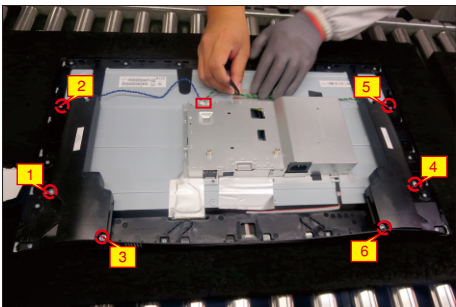
(No.1 screw size=M3x4, Torque=5±1kgfxcM)



S9

Use a Philips-head screwdriver to remove 6pcs screws for unlocking the speakers, then disconnect the speakers' cable away from the connector and release the two speakers from the hooks of the middle frame.

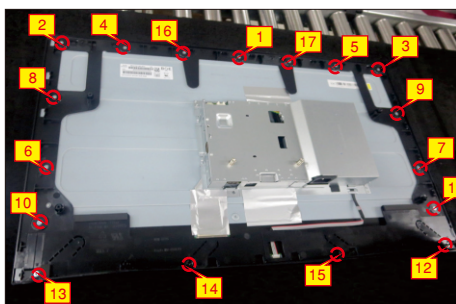
(No.1~6 screw size=M3x8, Torque=6±1kgfxcM)



S10

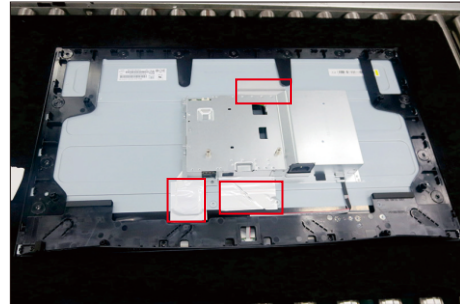
Use a Philips-head screwdriver to remove 15pcs screws for unlocking the middle frame with the panel module.

(No.1~17 screw size=M3x4, Torque=5±1kgfxcM)



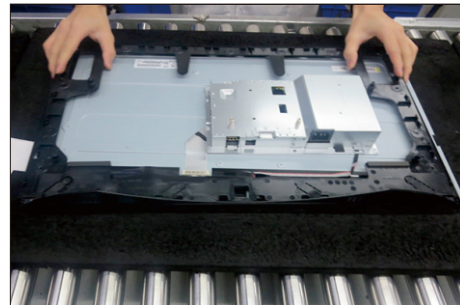
S11

Tear off 3pcs aluminum foil for releasing the bracket chassis module.



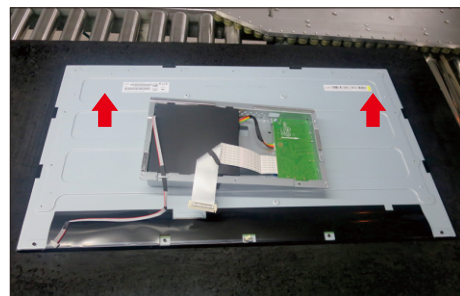
S12

Take away the middle frame, and put it on a protective cushion.



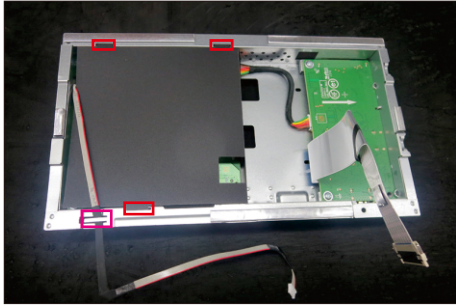
S13

Move up the bracket chassis module, and disconnect the LVDS cable and panel lamp cables from the connectors of the panel, then tear off the tapes and lift up the bracket chassis and put it aside for later disassembling.



S14

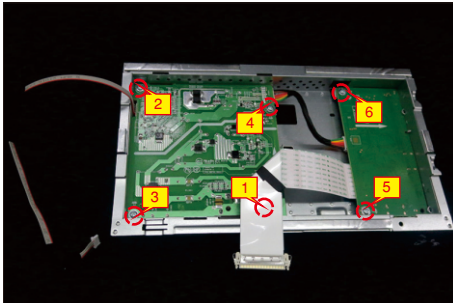
Release the lamp cable and Mylar sheet from the hooks of the bracket chassis module.



S15

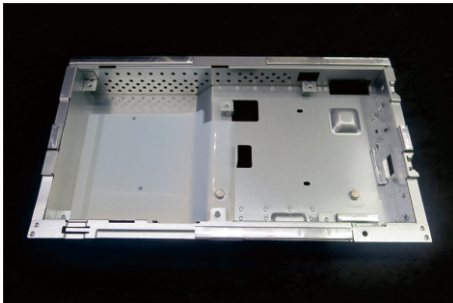
Use a Philips-head screwdriver to remove 6pcs screws for unlocking the circuit board.

(No. 1 screw size=M4x8, Torque=6±0.5kgfxcn;  
No.2~6 screw size=M3x6, Torque=6±0.5kgfxcn)



S16

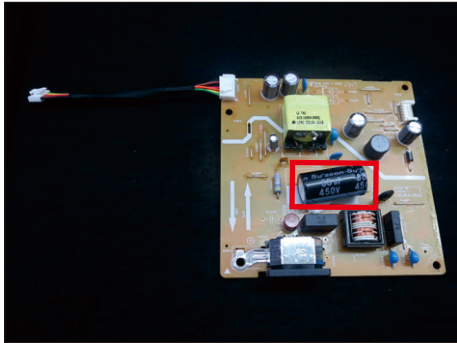
Remove the interface board and power board from the bracket chassis and disconnect all the cables.



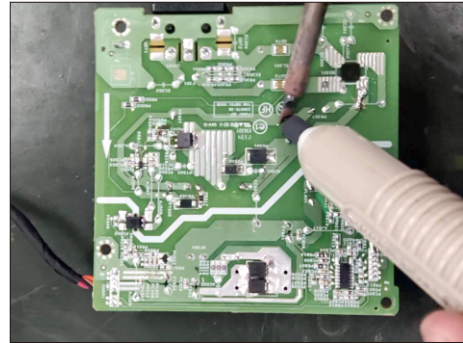


S17

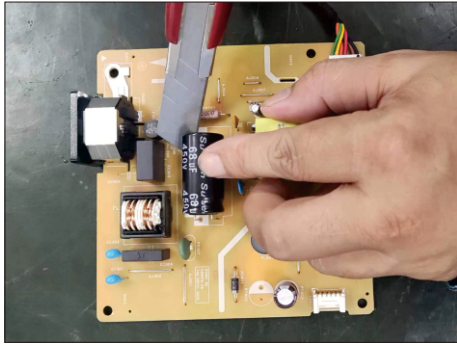
Remove electrolyte capacitors (red mark) from printed circuit boards.



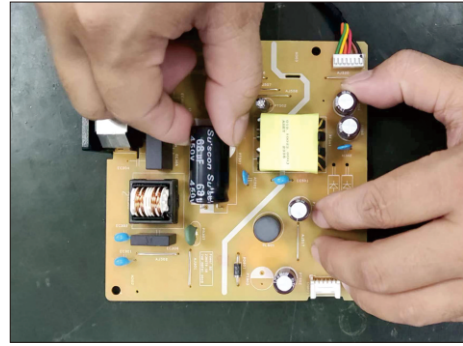
S17-4 Take out bulk cap. pin solder with soldering iron and absorber.



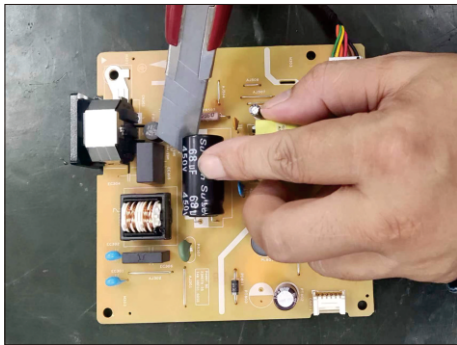
S17-1 Cut the glue between bulk cap. and PCB with a knife.



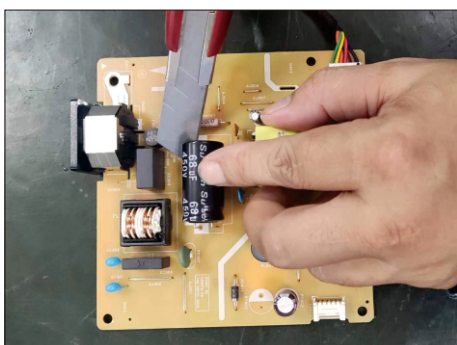
S17-5 Lift the bulk cap. up and away from the PCB.



S17-2 Ensure cutting path within the glue, don't touch bulk cap. or PCB.



S17-3 Cut into the bottom of bulk cap. and pullit up carefully.



## 2. Product material information

The following substances, preparations, or components should be disposed of or recovered separately from other WEEE in compliance with Article 4 of EU Council Directive 75/442/EEC.

Capacitors / condensers (containing PCB/PCT)	No used
Mercury containing components	No used
Batteries	No used
Printed circuit boards (with a surface greater than 10 square cm)	Product has printed circuit boards (with a surface greater than 10 square cm)
Component contain toner, ink and liquids	No used
Plastic containing BFR	No used
Component and waste contain asbestos	No used
CRT	No used
Component contain CFC, HCFC, HFC and HC	No used
Gas discharge lamps	No used
LCD display > 100 cm <sup>2</sup>	Product has an LCD greater than 100 cm <sup>2</sup>
External electric cable	Product has external cables
Component contain refractory ceramic fibers	No used
Component contain radio-active substances	No used
Electrolyte capacitors (height > 25mm, diameter > 25mm)	Product has electrolyte capacitors (height > 25mm, diameter > 25mm)

## 3. Tools Required

List the type and size of the tools that would typically can be used to disassemble the product to a point where components and materials requiring selective treatment can be removed.

Tool Description:

- Screwdriver (Phillip head) #1
- Screwdriver (Phillip head) #2
- Penknife
- Soldering iron and absorber