

# KEENETIC VOYAGER PRO


## Quick Start Guide


AX1800 Mesh Wi-Fi 6 Gigabit Router/Extender with Dedicated Real-Time Wi-Fi Spectrum Analyzer, a 2-Port Gigabit Smart Switch and Power over Ethernet

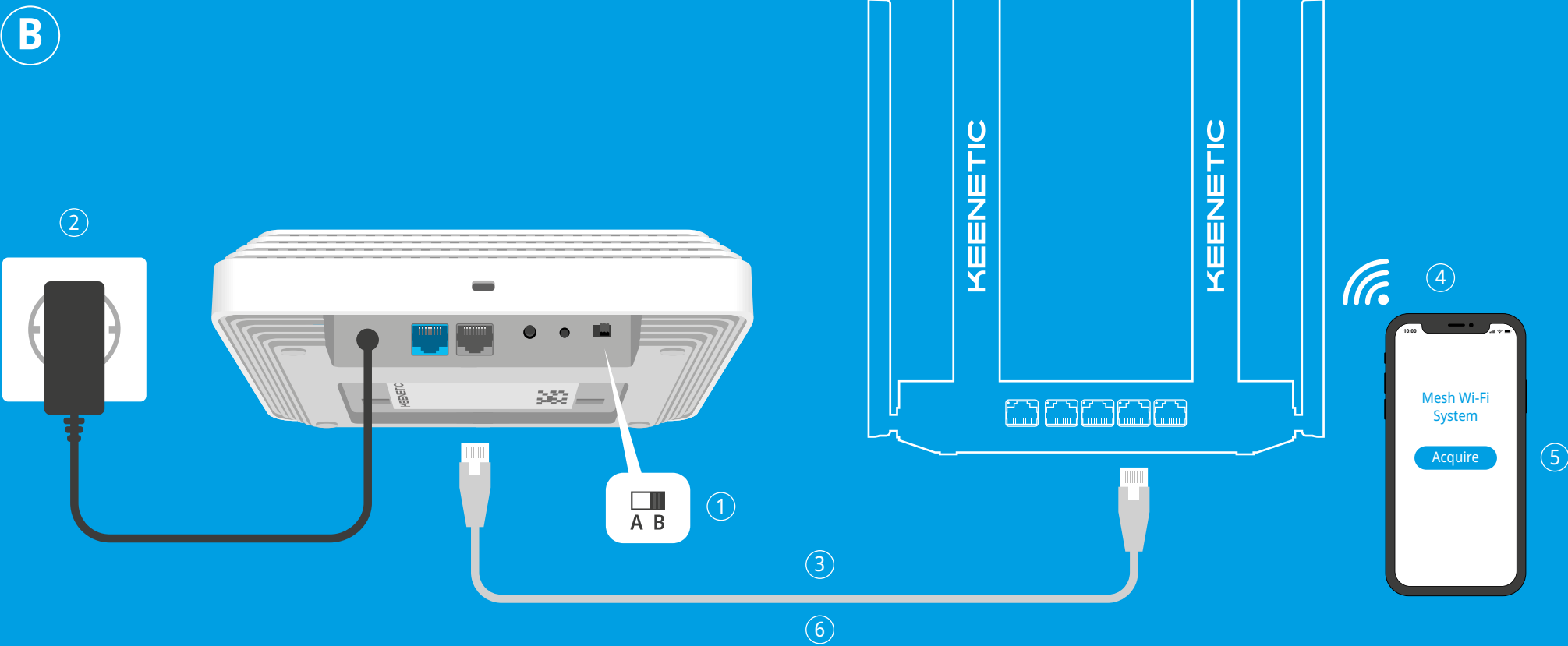
Model: KN-3510

## Creating a New or Extending an Existing Network


Keenetic routers deliver reliable, continuous, and secure Wi-Fi throughout your home or business location. Starting with one main Keenetic router, as your demands increase you can add more Keenetic devices to act as Wi-Fi extenders, to create a centrally-managed multi-node Mesh Wi-Fi System.

If you are creating a new network and this Keenetic Voyager Pro (hereinafter 'Keenetic device') is going to be your Main Router, put the switch in position **A** .

If you are extending an existing network and this Keenetic device is to act as a Wi-Fi extender, put the switch in position **B** .





## A — Connecting Your Keenetic Voyager Pro to the Internet

1. Set the physical **Operating Mode Switch** located on the back panel to position **A  — Router Mode**.
2. Position your Keenetic device within cable length of a power outlet. Place your Keenetic device in an open area for better wireless coverage. Connect your Keenetic device to a power source. Check that the **Status LED** is on and solid orange or green.
3. Connect a mobile device to your Keenetic router via Wi-Fi. The default Wi-Fi name (SSID) and the Wi-Fi password are printed on your Keenetic device's back label along with a QR code that will automatically connect your mobile device to the Keenetic router's Wi-Fi when scanned. Alternatively, connect a computer to the gray port marked **1** on your Keenetic device using the included Ethernet cable.
4. Once connected, an **Initial Setup Wizard** window will appear on your mobile device / computer. If the Wizard does not appear, using a browser go to **my.keenetic.net** and follow the setup instructions.

**Note:** If the **Initial Setup Wizard** still doesn't appear, please refer to the Frequently Asked Questions section below.

## B — Extending Your Existing Network Coverage

1. On the Keenetic device you wish to be a Mesh Wi-Fi Extender, set the **Operating Mode Switch** located on the back panel to position ** B — Extender Mode**.
2. Connect your Keenetic device to a power source. Check that the **Status LED** is on and solid orange or green.
3. Make sure your Keenetic Main Router is active and has an Internet connection. Connect the 'Extender' Keenetic device to your Keenetic Main Router using an Ethernet cable (as supplied). Alternatively you can connect Keenetic devices wirelessly by placing them near to each other and simultaneously pressing the **Wi-Fi Control Buttons**  on both devices. Check that the **Status LED** on the 'Extender' is illuminated green.
4. Connect a mobile device / computer to your Keenetic Main Router network.
5. Launch a web browser and go to **my.keenetic.net** and log in to the Main Router or launch the Keenetic Mobile Application. Then choose the **Wi-Fi System** section and click **Acquire** to add an extender candidate to your Wi-Fi System. Wait for the process to complete.
6. Disconnect the acquired Extender from the Main Router and place the Extender where you want to expand your Wi-Fi network in your home. A Keenetic Mesh Wi-Fi System supports both wireless and wired connections between the Main Router and Extenders. To maximize your network performance, use wired connections where possible. The **Status LED** on the Extender will illuminate green when it has connected successfully to your network.

For technical support and other information, please visit

**help.keenetic.com**

Mounting Options

This Keenetic device can be placed on a flat surface or attached to a wall or solid ceiling using the supplied mounting kit, it can also be fitted to suspended ceilings by using the mounting kit together with T-rail clips (separate instructions below).

Mounting to a Wall or Solid Ceiling

1. Place the mounting bracket in the desired position. Be attentive to any existing electrical or network cabling.

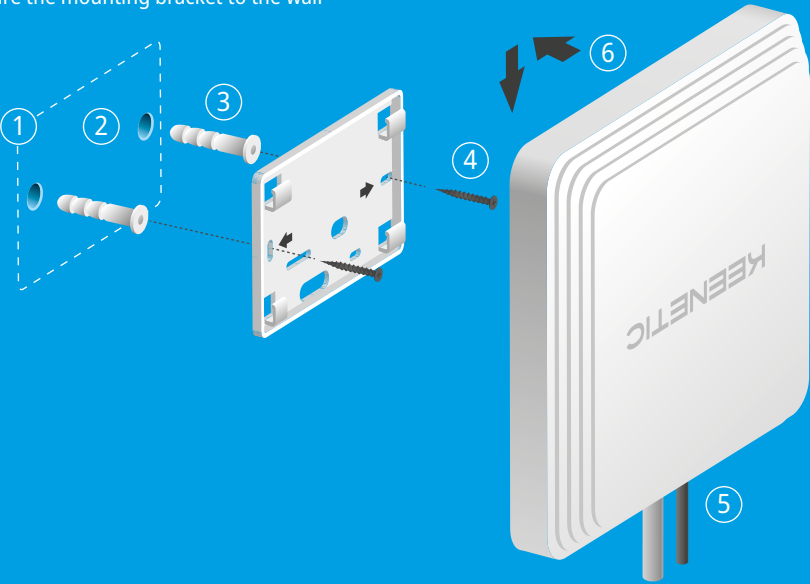
2. Mark two screw hole positions. Drill a 6 mm diameter hole in each of the marked spots.

3. Insert the ribbed plastic wall plugs into the holes. Or, in the case of a drywall surface, screw the drywall anchors in with a screwdriver.

4. Secure the mounting bracket to the wall
- or ceiling by driving the self-tapping screws into the anchors.

5. Connect the Ethernet cable(s) and/ or power adapter to the Keenetic device.

6. Attach the Keenetic device to the mounting bracket and move it in the direction of the arrows until it locks into place.



Mounting to a Suspended Ceiling Using T-rails

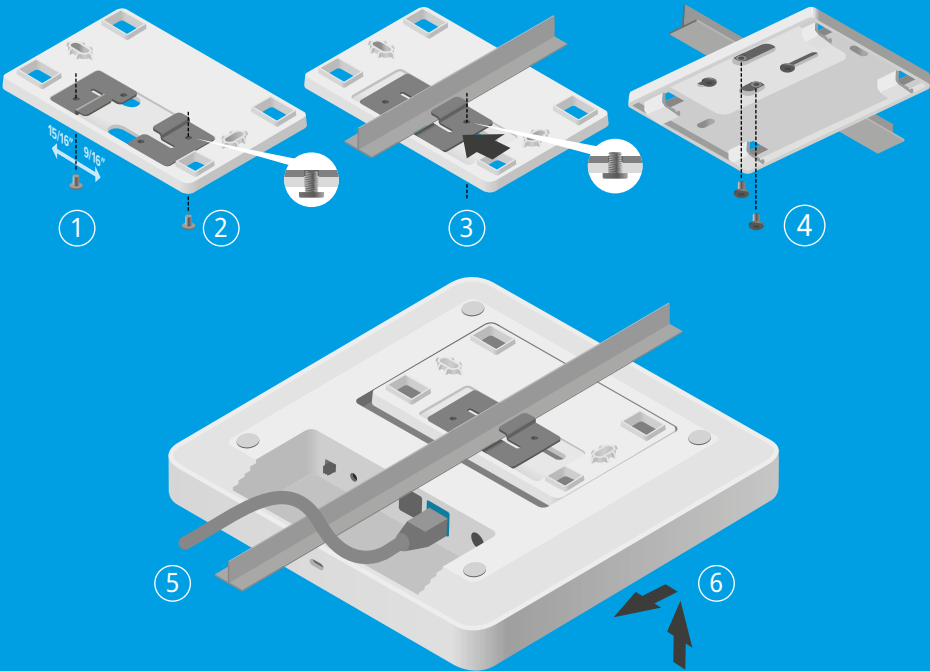
1. Secure the first T-rail clip to the mounting bracket with a screw. Depending on the T-rail size, use the 9/16" (14.3 mm) or 15/16" (23.8 mm) position.

2. Hook the second T-rail clip to the mounting bracket. Do not tighten the screw at this time.

3. Position the mounting bracket on the T-rail by placing the first T-rail clip on the rail base and pushing the second clip toward the rail base. Tighten the second screw.
4. Secure the mounting bracket to the T-rail with the two remaining screws.

5. Connect the cables to the Keenetic device.

6. Attach the Keenetic device to the mounting bracket and move it in the direction of the arrows until it locks into place. Adjust the cables so that the exposed parts are hidden behind the case.



Keenetic Voyager Pro Details

1. Status LED

Blinking green — Starting up or updating the operating system.

Solid green — Internet connection is established.

Blinking orange — Quick connection session (WPS) in progress.

Solid orange — No Internet connection.

Off — Off.
2. Kensington Security Slot™

A Kensington Security Slot™ for theft protection.
3. DC Power Socket

For use with the power adapter supplied in the package. The Keenetic device is designed for continuous operation and does not need to be powered off daily.
4. Network Port 0 - PoE

The blue port marked **0 - PoE** is preconfigured for Internet connection in Router Mode. In Extender Mode, this port works for home or office network connection. Also, the device can be powered by PoE on this port.
5. Network Port 1

By default, this port is intended for home devices, but it can be reconfigured and connected to the Internet in Router Mode.
6. Wi-Fi Control Button

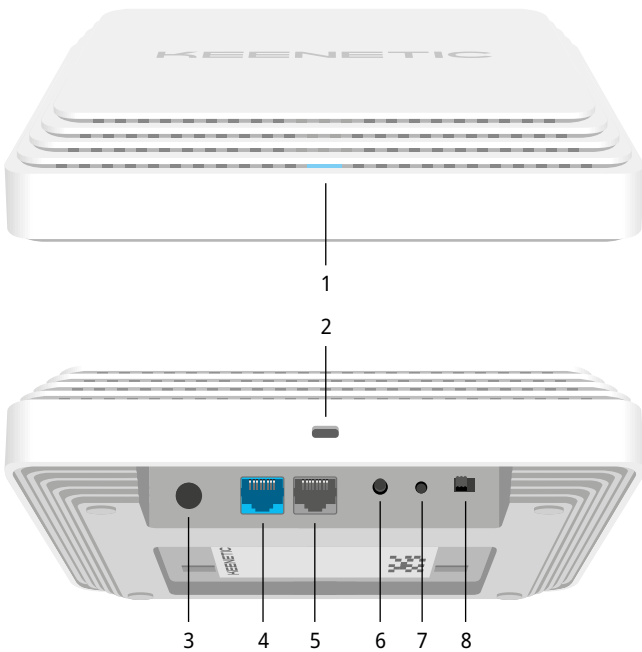
By default, this button allows you to easily add extenders to the Keenetic Mesh Wi-Fi System, or other WPS-compliant devices to the wireless network.
7. Reset Button

Restores the original factory settings and resets the administrator password. For instructions on how to reset your Keenetic device to factory settings, see the Frequently Asked Questions section below.

Pressing — Starts a quick connection session for adding a new device.
8. Operating Mode Switch

A — Router Mode.

B — Extender Mode.



Powering with PoE

This Keenetic device can be powered via a power adapter or via Power over Ethernet (PoE) technology. To power it with PoE, connect an Ethernet cable from an IEEE 802.3at-compatible Power Sourcing Equipment unit (such as a PoE switch or PoE injector) to port **0 - PoE** of your Keenetic device. When both PoE and DC power sources are available, the DC power source will have priority.

Management Options

The **Keenetic web interface** is the primary way to manage your device, offering all features and configuration options. You can also book a private domain name with the free KeenDNS service to have secure, HTTPS-protected remote management of your network anytime, and from anywhere. Open [my.keenetic.net](https://my.keenetic.net) to start.

The **Keenetic mobile application** provides the easiest way to manage your home network through your iOS or Android devices on the go, focused on routine tasks, parental functions and traffic monitoring. Download the Keenetic app, available on Google Play and the Apple App Store, on your mobile phone.



Scan for Keenetic App

The **Keenetic RMM system** is a cloud-based multi-site remote monitoring and management solution purpose-built for Small / Medium-sized businesses to help keep critical networks and infrastructure online 24/7. Visit [rmm.keenetic.com](https://rmm.keenetic.com) to learn more.

Frequently Asked Questions

What should I do if I can't access the Initial Setup Wizard page or the Keenetic Web Interface page?

1. Make sure that your mobile device / computer is connected to your Keenetic device (in Router Mode) via Wi-Fi or an Ethernet cable and set up to obtain an IP address and DNS servers automatically.

2. Check that you have correctly entered the appropriate Keenetic device web address: either [my.keenetic.net](https://my.keenetic.net) (recommended) or [192.168.1.1](https://192.168.1.1) or [192.168.2.1](https://192.168.2.1).

3. Reboot your mobile device / computer and your Keenetic router.

4. If the Initial Setup Wizard page is still not appearing, please follow the instructions below to reset your Keenetic router.

What should I do if I can't access the Internet with my Keenetic device?

1. If the **Status LED** on the Main Router is illuminated orange, consult your ISP to make sure that that service is available, and that you are using the correct connection parameters, e.g. account login and password, authentication protocol, MAC address, etc. Make any necessary changes.

2. If the **Status LED** on the Main Router is illuminated green, please check the wired or Wi-Fi connections between your Keenetic Main Router and home devices, including any Keenetic extenders.

Can I connect a Keenetic Extender to a non-Keenetic main router?

Absolutely. Press the **Wi-Fi Control Button** on your Keenetic in Extender Mode. Within two minutes, start a WPS session on your main router by pressing the appropriate button on the non-Keenetic device. A Keenetic Extender will adopt the wireless network name and password of the main router. The **Status LED** on the Extender will illuminate green when it has connected successfully to your network. To configure the repeater settings, first open the user interface of the main router to determine the IP address assigned to your Keenetic Extender. Then, enter that IP address in the web browser to open the Web Interface of the Keenetic Extender to make necessary changes.

What should I do if I forget my wireless password?

The default password for connecting to your Wi-Fi network can be found on a sticker on the back of your Keenetic device, or if you are using a Mesh Wi-Fi System, you should use the password on the Main Router. If the default Wi-Fi password has been changed and subsequently lost, the changed password can be retrieved or reset by logging in to the web interface or in the Keenetic Mobile Application.

What should I do if I can't add an extender to the Keenetic Mesh Wi-Fi System?

Make sure the **Operating Mode Switch** on the case is set to **B — Extender Mode**. If this is correct then next restore the factory settings of your extender (see below), and repeat the procedure of adding the extender to the Mesh Wi-Fi System.

What should I do if I forget my Web Interface page password?

To create a new password, please follow the instructions to restore the factory settings on your Keenetic device in the question below.

How do I reset/restore the original factory settings on my Keenetic device?

Make sure that your Keenetic device is connected to a power supply. Press and hold the **Reset Button** until the **Status LED** begins to blink green rapidly, release the button and wait while your device restarts.

**Important:** After restoring factory settings, you will need to reconfigure your Internet connection and re-add extenders to your Mesh Wi-Fi system.

General Information

- What's in the Box

Single-pack edition

■ 1 Router/Extender preloaded with KeeneticOS;

■ 1 Level VI energy-efficient 100–240 V power adapter;

■ 1 Ethernet cable;

■ 1 Mounting kit;

■ 1 Quick Start Guide;

■ 1 Quick Start Guide (multilingual).

Four-pack edition

■ 4 Routers/Extenders preloaded with KeeneticOS;

■ 4 Mounting kits;

■ 1 Quick Start Guide;

■ 1 Quick Start Guide (multilingual);

Does **not** include power adapters and Ethernet cables.

- Safety Instructions

■ Your Keenetic device is **ONLY** for indoor use — **NEVER** use it outside.

■ Before use, remove protective labels from your Keenetic device, and ensure vents are unblocked.

■ Never use your Keenetic device in an enclosed space, and ensure that the Keenetic-supplied power adapter is always easily accessible.

■ **ONLY** use a Keenetic-supplied power adapter — cease to use any damaged adapter **IMMEDIATELY**.

■ Your Keenetic device and its power adapter contain no user-serviceable parts — **DO NOT OPEN**.

■ Keep your Keenetic device away from water, excessive humidity or heat, and direct sunlight.

**Device Warranty**  
For the most up to date Warranty Information, please visit our website [keenetic.com/legal](https://keenetic.com/legal).

Your Keenetic device comes with a non-transferable 3-year warranty from the documented date of purchase (including your 2-year European Limited Warranty). Valid claims in case of a defect will be honored subject to local legal requirements.

**Certification Information**  
Keenetic Limited hereby declares that this device is in compliance with all relevant provisions of directives 2014/53/EU, 2009/125/EC, and 2011/65/EU. Details of the original EU declaration may be found at [keenetic.com](https://keenetic.com) within details on specific model pages.

This device complies with EU radiation exposure limits set forth for an uncontrolled environment.

This equipment should be installed and operated with a minimum distance of 20 cm between the antennas and a person's body.

The frequency and the maximum transmitted power for your device, per the requirements of the EU are listed below:  
2400-2483,5 MHz: 20 dBm;  
5150-5350 MHz: 23 dBm;  
5470-5725 MHz: 30 dBm.

This device will support DFS and TPC functionality while operating in the 5 GHz band.

AT	BE	BG	CH	CY	CZ	DE
DK	EE	EL	ES	FI	FR	HR
HU	IE	IS	IT	LI	LT	LU
LV	MT	NL	NO	PL	PT	RO
SE	SI	SK	TR	UA	UK	

This device is restricted to indoor use only when operating in 5150 to 5350 MHz frequency range (channels 36 - 64).

Per (EC) No 1275/2008, the power consumption in networked standby if all wired network ports are connected and all wireless network ports are activated is 4.6 W.

**Disposal**  
In accordance with European directives, your Keenetic device, including the power adapter and cables may not be disposed of with general household waste. Consult your local authority or your supplier for information about disposal.



**Notice**  
When you use your Keenetic device (including when you connect your Keenetic device the first time), Keenetic Limited will process certain personal data about you, e.g., service tag, serial number, model name, software version, and IP address of your Keenetic device. For more information, please go to [keenetic.com/legal](https://keenetic.com/legal).  
If you are in the European Union / European Economic Area, Keenetic GmbH will process certain personal data about you, e.g., service tag, serial number, model name, software version, and IP address of your Keenetic device. Please read our Device Privacy Notice for the European Union / European Economic Area at [keenetic.com/legal](https://keenetic.com/legal).