



Foxconn Technology Group.

# T24i-30 Simplified service manual for dismantling

Model Name: Lenovo T24i-30



<p>Prepare soft cloth and sponge as working platform to place LCD monitor horizontally.</p>	
<p>Hold LCD by the side carefully and DON'T touch or press panel directly.</p>	

**2. Appropriate tools**

Select the Appropriate tools for disassembly and re-assembly.

Phillips screwdriver (#2)	
spacer screwdriver	
C/D disassembly tool	
Gloves or soft cloth	

### 3. Disassembly SOP

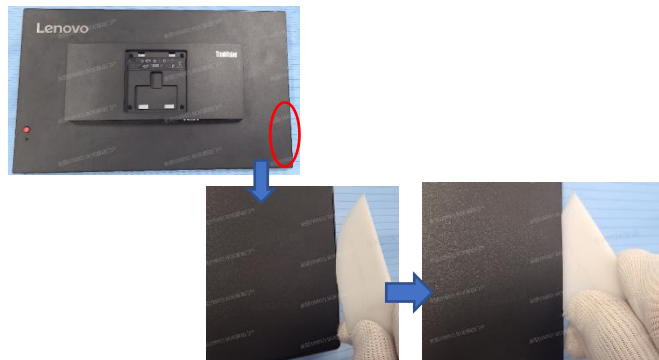
Put the monitor on a flat surface  
(Put the EPE on under the monitor)



Remove the screw \* 4pcs  
Tool : Screwdriver #2



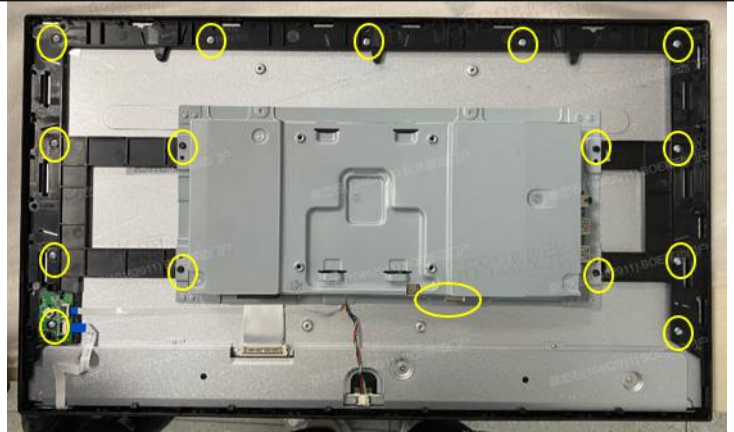
Use the C/D disassembly tool to  
release Rear cover hook from  
disassemble hole on right side



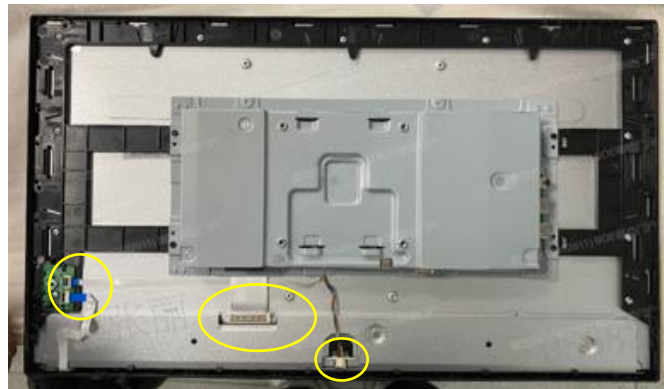
Remove All tape and foil



Remove All screw.  
Tool : Screwdriver #2

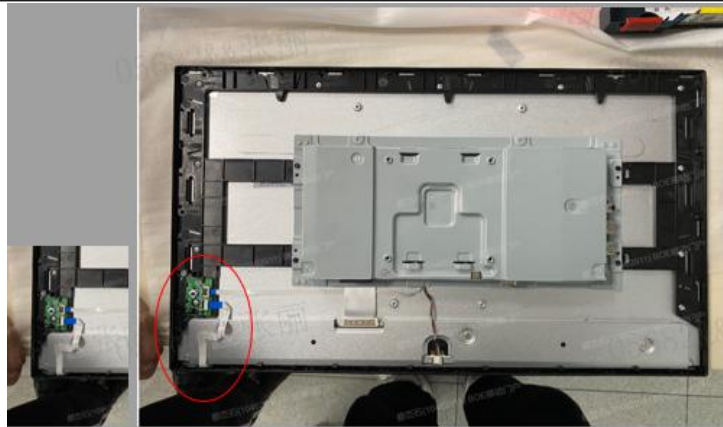


Unplug light bar line and LVDS  
line \ Keyboard line

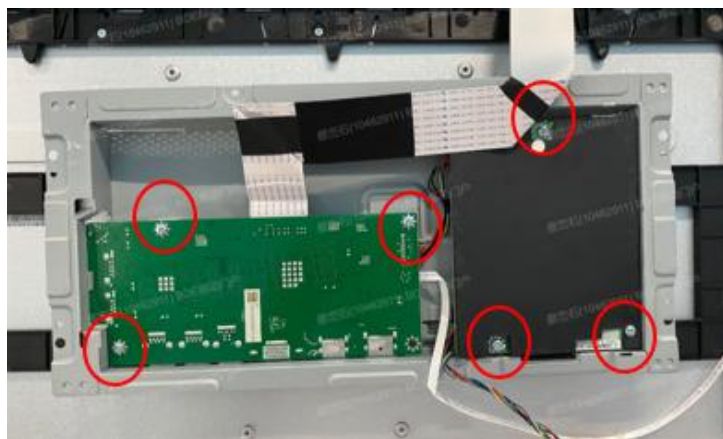


Release the middle frame from the  
Panel

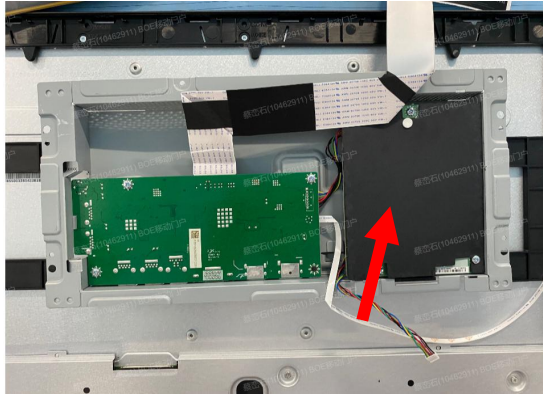
Release the keypad pcb from the  
the middle frame



Remove All screw.  
Tool : Screwdriver #2  
Tool : spacer screwdriver



Take out the mylar sheet from Main chassis



Take out PCB and Peel off all mylar.

Take out the Thermal pads from Power pcb

