

## PERFORMANCE

### Processor

Intel® Core™ Ultra 7 164U, 12C (2P + 8E + 2LPE) / 14T, Max Turbo up to 4.8GHz, 12MB

### NPU

Intel® AI Boost integrated in Intel® Core™ Ultra processor

### Graphics

Integrated Intel® Graphics

### Chipset

Intel® SoC Platform

### Memory

32GB Soldered LPDDR5x-6400

### Storage

1TB SSD M.2 2242 PCIe® 4.0x4 NVMe® Opal 2.0

### Storage Support

One drive, up to 1TB M.2 2242 SSD

### Speakers

Stereo speakers, 1W x2, Dolby Audio™

### Microphone

2x, Array

### Camera

Front 5.0MP + IR Discrete with Privacy Shutter / Rear 8.0MP

### Sensors

- Accelerometer (G) sensor
- Gyroscope sensor
- Hall sensor
- Inclinometer sensor
- Proximity (P) sensor (WWAN models)

### Vibration Motor

No support

### Battery

Integrated 42Wh

### Power Adapter

65W USB-C® Slim (3-pin)

## DESIGN

### Display<sup>[1]</sup>

12.3" FHD+ (1920x1280) IPS 400nits Anti-reflection / Anti-smudge, 100% sRGB, Lower Power, Touch

### Touchscreen

GMF / GF2, 10-point Multi-touch

### Case Material

Magnesium-aluminium

### Keyboard

Backlit, Swiss

### Pen

Lenovo® Digital Pen

### Dimensions (WxDxH)<sup>[2]</sup>

Tablet: 283.3 x 203.5 x 8.8 mm (11.15 x 8.01 x 0.35 inches)

Folio keyboard: 283.3 x 217.8 x 5.7 mm (11.15 x 8.57 x 0.22 inches)

Total: 283.3 x 208.1 x 14.5 mm (11.15 x 8.19 x 0.57 inches)

### Weight<sup>[3]</sup>

Tablet: 0.76 kg (1.67 lbs)

Folio keyboard: 0.34 kg (0.75 lbs)

Total: 1.1 kg (2.42 lbs)

### Case Color

Black

## SOFTWARE

### Operating System

Windows® 11 Pro, WE (EN/FR/DE/NL/IT)

### Bundled Software

None

## CONNECTIVITY

### WLAN + Bluetooth®

Intel® Wi-Fi® 6E AX211, 11ax 2x2 + BT5.3

### WWAN

Quectel EM160R-GL, 4G LTE CAT16, with Embedded eSIM

### SIM Card

None

### NFC

None

### Location Services

GPS + GLONASS + Galileo + Beidou + A-GPS

### Standard Ports

- 1x USB-C® (USB 10Gbps / USB 3.2 Gen 2), with USB PD 3.0 and DisplayPort™ 2.1
- 1x USB-C® (Thunderbolt™ 4 / USB4® 40Gbps), with USB PD 3.0 and DisplayPort™ 2.1
- 1x Headphone / microphone combo jack (3.5mm)
- 1x Pogo pin connector (8-point)

### Optional Ports (configured)

1x Nano-SIM Card Slot

### Docking

Various docking solutions supported via Thunderbolt™ or USB-C®.

For more compatible docking solutions, please visit [Docking for ThinkPad® X12 Detachable Gen 2](#)

## SECURITY & PRIVACY

### Security Chip

Discrete TPM 2.0 Enabled

### Fingerprint Reader

Touch Style, Match-on-Chip, on Keyboard

## MANAGEABILITY

### System Management

Intel® vPro® Enterprise

## SERVICE

### Base Warranty

3-year, Courier or Carry-in with 1-year Battery

### Included Upgrade

1Y Premier WHB (CPN), CO2 Offset 0.5 ton (2nd Generation Carbon Offset Projects)

## ACCESSORIES

### Bundled Accessories<sup>[4]</sup>

ThinkPad® X12 Detachable Gen 2 Folio Keyboard

## CERTIFICATIONS

### Green Certifications<sup>[5][6]</sup>

- ENERGY STAR® 8.0
- EPEAT™ Gold Registered
- ErP Lot 6
- ErP Lot 26
- RoHS compliant
- TCO Certified 9.0

### Mil-Spec Test

MIL-STD-810H military test passed

## MODEL

**TopSeller** : Yes

**Announce Date** : 2024-06-10

**EAN / UPC / JAN** : 0198153233489

### Note:

<sup>[1]</sup> IPS (in-plane switching) technology may refer to IPS, PLS, ADS, AHVA, AAS.

<sup>[2]</sup> The system dimensions may vary depending on configurations.

<sup>[3]</sup> The system weight is approximate and based on results in Lenovo lab, which varies depending on the source of component, variance of the distribution of each component, and manufacturing process. It may not be the exact weight for each specific model.

<sup>[4]</sup> For more compatible accessory solutions, please visit [Accessories for ThinkPad X12 Detachable Gen 2](#).

<sup>[5]</sup> EPEAT registration and ENERGY STAR certification are.....

• Lenovo reserves the right to change specifications without notice.

To see more note information, please link to

<https://psref.lenovo.com/Detail/2482?M=21LK0020MZ>

## Premier Support - A direct 24x7x365 line to our most elite technicians.



Advanced technical support, 24x7x365, in more than 100 markets



Technical Account Managers for proactive relationship and escalation management



Comprehensive hardware & OEM software support



Priority on service delivery and repair parts



Single point of contact for simplified end-to-end case management



Lenovo Service Connect Portal for customized reporting and product support

## Accidental Damage Protection - Protection of your PC from the unexpected.

Experience shows that a significant portion of devices may be damaged (and not covered under warranty) in the first three years. Lenovo's Accidental Damage Protection service covers accidents beyond the system warranty such as drops, spills, bumps and even electrical surges. Make sure your new device has maximum protection, avoid unplanned costs and get peace of mind.

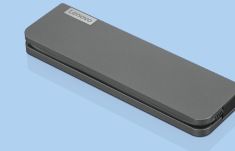
## Base Warranty - Included with the systems you purchase, default 1- or 3-year coverage window.

## Warranty Extensions & Upgrades - Service and protection that's right for your circumstances.

- Pick Up & Return Courier
- Onsite Support
- Technician Installed Customer
- Replaceable Unit Service
- International Warranty Upgrade

Lenovo may not offer the products, services or features discussed in this document in all regions. Lenovo may withdraw an offering at any time. Information is subject to change without notice. Consult your local representative for information on offerings available in your area. Lenovo reserves the right to change specifications or other product information without notice. Lenovo is not responsible for photographic or typographical errors. Lenovo provides this publication "as is" without warranty of any kind, either express or implied, including the implied warranties of merchantability or fitness for a particular purpose.

## Recommended Accessories



### Lenovo USB-C Mini Dock\_US

40AU0065US

Expand Your Potential with An Universal Mini Dock; Lenovo understands that modern business depends on a wide variety of PC's and even brands to meet their business needs. To make this easier Lenovo USB-C Mini dock is ...

## Recommended Services

BEST	2Y Lenovo Protect (Premier Support + ADP + KYD + International Upg) (5PS1J31177)
BETTER	3Y Premier Support upgrade from 1Y Premier Support (5WS1B38518)
GOOD	2Y Premier Support upgrade from 1Y Premier Support (5WS1B38517)

For a full list of accessories and services, please visit:  
<https://smartfind.Lenovo.com>



**PSREF**  
Product Specifications  
Reference