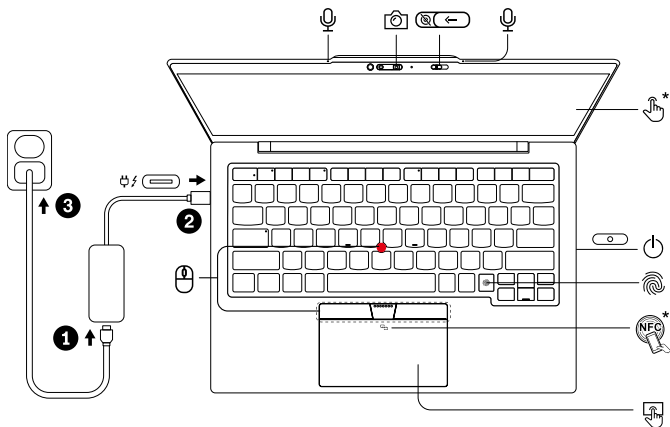
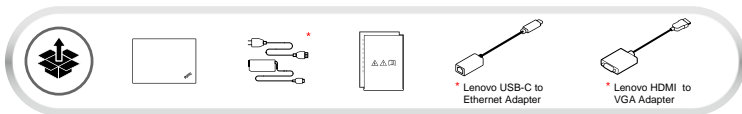


Lenovo  
**ThinkPad X1**

ThinkPad X1 Carbon Gen 12

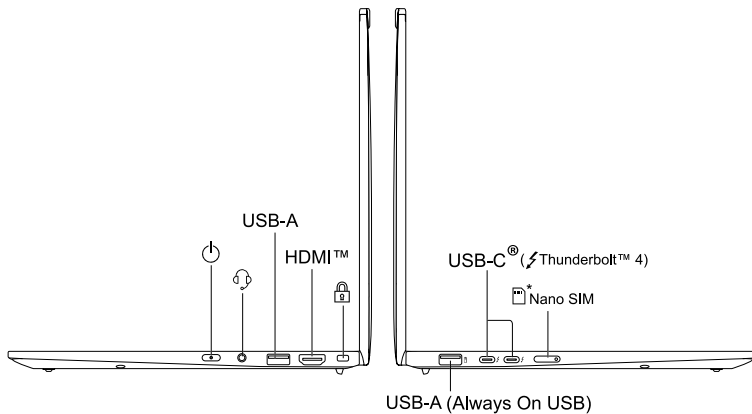
Lenovo

## Get started



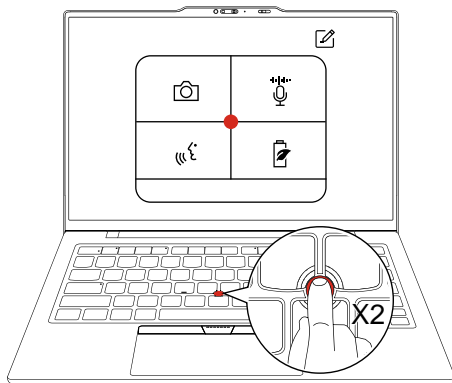
\* For selected models

## Sideview



Read the statement on USB transfer rate in the *User Guide*. To access the *User Guide*, refer to methods mentioned on the back cover.

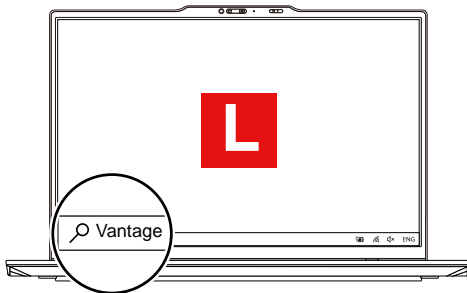
## TrackPoint Quick Menu



Double tap to launch<sup>1</sup> TrackPoint Quick Menu for quick configuration of some device settings

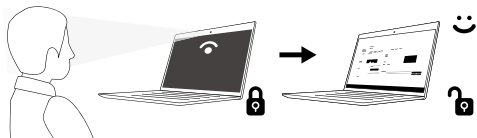
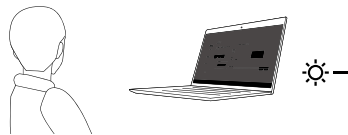
<sup>1</sup> It can be set to single-tapping launch.

## Lenovo Commercial Vantage\*



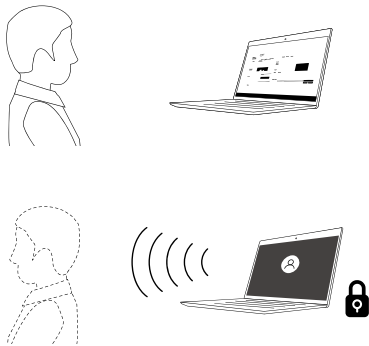
Access Commercial Vantage to adjust device settings and check for system updates.

## User Presence Sensing<sup>2</sup>



<sup>2</sup> For Computer Vision models only

## Lock on leave\*



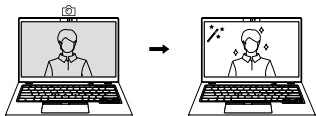
Protect your privacy and improve battery life.

The initial driver doesn't have this function. It will be enabled by driver update soon.

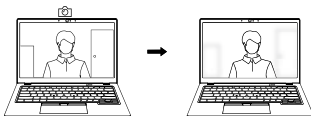
# Lenovo View



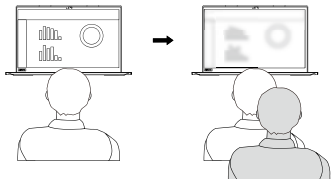
Video Enhancer



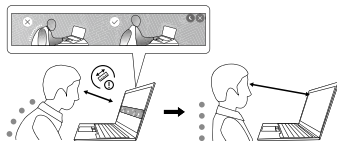
Background Removal\*



Privacy Guard



Posture Warning





[English]

## Specific absorption rate (SAR)

YOUR DEVICE MEETS INTERNATIONAL GUIDELINES FOR EXPOSURE TO RADIO WAVES.

Refer to the following for 10g SAR limit and maximum reported SAR values:

10g SAR limit: 2 W/kg (body-worn SAR); 4 W/kg (limb SAR)

Maximum SAR with 0 mm separation distance: 0.490 W/kg (body-worn SAR); 0.490 W/kg (limb SAR)

For more information about SAR, refer to the *Safety and Warranty Guide* that came with your device.

## European Union (EU) / United Kingdom (UK) — radio frequency and power

This radio equipment operates with the following frequency bands and maximum radio-frequency power:

Technology	Frequency [MHz] / band	Maximum transmit power
WLAN 802.11b/g/n/ax	2400 - 2483.5	< 19.9 dBm
WLAN 802.11a/n/ac/ax	5150 - 5725	< 23 dBm
WLAN 802.11a/n/ac/ax	5725 - 5875	< 13.98 dBm
WLAN 802.11ax	5945 - 6425	< 22.9 dBm
Bluetooth BR/EDR/LE	2400 - 2483.5	< 17.7 dBm
WWAN UMTS	1/3/5/8	< 25 dBm
WWAN LTE	38/41/42/43	< 28 dBm
WWAN LTE	1/3/5/7/8/20/28/34/40	< 25 dBm
LTE HPUE	41	< 28 dBm
WWAN 5G NR	1/3/5/7/8/20/28/38/40/41/77/78	< 25 dBm
WWAN 5G HPUE	38/40/41/77/78	< 28 dBm
WWAN 5G SA UL MIMO	41/77/88	< 30 dBm
NFC	13.56	< -5.31 dB $\mu$ A/m@10m

Note: Not all wireless bands may be enabled depending on your product configuration.

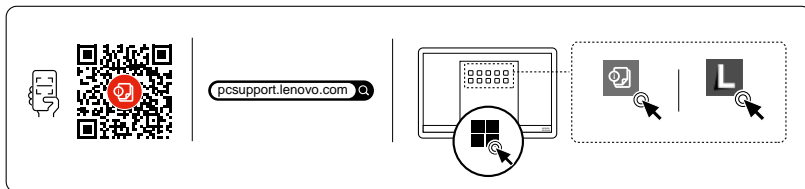
Usage of this device is limited to indoor locations in the bands 5150 - 5350 MHz and 5945 - 6425 MHz.

For Decal Position Only

PN: xxxxxxxx Printed in China



## Access User Guide



First Edition (December 2023)

© Copyright Lenovo 2023.

**LIMITED AND RESTRICTED RIGHTS NOTICE:** If data or software is delivered pursuant to a General Services Administration "GSA" contract, use, reproduction, or disclosure is subject to restrictions set forth in Contract No. GS-35F-05925.

Lenovo, Lenovo logo, ThinkPad, and ThinkPad logo are trademarks of Lenovo. Intel and Thunderbolt are trademarks of Intel Corporation or its subsidiaries in the U.S. and/or other countries. The terms HDMI and HDMI High-Definition Multimedia Interface are trademarks or registered trademarks of HDMI Licensing LLC in the United States and other countries. USB-C is a registered trademark of USB Implementers Forum. All other trademarks are the property of their respective owners.



For FSC Mix logo only