



The product images are for illustration purposes only. Actual product appearance, ports, keyboard layout, and accessories may vary by model.

- Intel Core 3 100U, 6C (2P + 4E) / 8T, P-core 1.2 / 4.7GHz, E-core 0.9 / 3.3GHz, 10MB Intel Smart Cache
- 1x 8GB SODIMM DDR5-5200
- 256GB SSD M.2 2242 PCIe 4.0x4 NVMe
- Integrated Intel Graphics
- Windows 11 Pro, English (US) / English (UK)
- Case color - Business Black
- 1-year, Courier or Carry-in

Premium Care - Advanced Support from Real People. Real Fast.



REAL PERSON

Choose how you want to reach us - through the phone, chat or email - our expert technicians will take care of you.



REAL FAST

Highly trained technicians will provide you real-time solutions, whatever the issue, on your first contact. If needed, our team will schedule an onsite visit for the next business day.



HASSLE FREE

'Getting started' and 'how-to' assistance for hardware and software. Easy solutions that are simple to reach - that's how Premium Care delivers you the ideal support experience.



PC HEALTH CHECK

Free annual PC Health Check that allows our experts to spot issues before you do so they can resolve them quickly and help you avoid PC problems.

Accidental Damage Protection - Protection of your PC from the unexpected.

Experience shows that a significant portion of devices may be damaged (and not covered under warranty) in the first three years. Lenovo's Accidental Damage Protection service covers accidents beyond the system warranty such as drops, spills, bumps and even electrical surges. Make sure your new device has maximum protection, avoid unplanned costs and get peace of mind.

Base Warranty - Included with the systems you purchase, default 1- or 3-year coverage window.

Warranty Extensions & Upgrades - Service and protection that's right for your circumstances.

- Pick Up & Return Courier
- Onsite Support
- Technician Installed Customer
- Replaceable Unit Service
- International Warranty Upgrade

Recommended Accessories United Kingdom



Lenovo Essential Stereo Analog Headset

4XD0K25030



ThinkPad Bluetooth Presenter Mouse (Aura Edition)

4Y51T62792



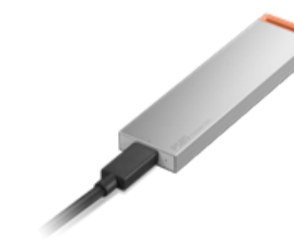
Lenovo 16" Laptop Everyday Backpack B510

4X41U80414



Lenovo Dual USB-C 65W GaN Charger

GOA6065WUK



Lenovo PS8S Portable SSD 4TB

4XB1T91892



Lenovo 310 FHD Webcam Black

GXC1S15024

>> [View More Accessories](#)

PERFORMANCE**Processor**

Intel Core™ 3 100U, 6C (2P + 4E) / 8T, P-core 1.2 / 4.7GHz, E-core 0.9 / 3.3GHz, 10MB Intel® Smart Cache

Graphics

Integrated Intel® Graphics

Chipset

Intel® SoC Platform

Memory

1x 8GB SODIMM DDR5-5200

Memory Slots

Two DDR5 SODIMM slots, dual-channel capable

Max Memory^[1]

Up to 32GB DDR5-5200 offering

Storage

256GB SSD M.2 2242 PCIe® 4.0x4 NVMe®

Storage Slot

One M.2 2242 PCIe® 4.0 x4 slot

Max Storage Support^[2]

One drive, up to 1TB M.2 2242 SSD

Optical

None

Card Reader

No Card Reader

Audio Chip

High Definition (HD) Audio, Senary SN6147 codec

Speakers

Stereo speakers, 1.5W x2

Microphone

2x, Array

Camera

HD 720p with Privacy Shutter

Battery

47Wh

Power Adapter

65W USB-C® (3-pin)

Special Features

Modern Standby

DESIGN**Display**

15.6" FHD (1920x1080) TN 250nits Anti-glare, 45% NTSC

Touchscreen

None

Screen-to-Body Ratio

87%

Pen

Pen Not Supported

Keyboard

Non-backlit, English

Touchpad

Buttonless Mylar® surface multi-touch touchpad, supports Precision TouchPad (PTP), 62 x 104 mm (2.44 x 4.09 inches)

Dimensions (WxDxH)^[3]

359.2 x 235.8 x 18.3 mm (14.14 x 9.28 x 0.72 inches)

Weight^[4]

Starting at 1.61 kg (3.55 lbs)

Case Color

Business Black

Case Material

PC-ABS (Top), PC-ABS (Bottom)

Surface Treatment

Texture

SOFTWARE**Operating System**

Windows® 11 Pro, English (US) / English (UK)

Bundled Software

Office Trial

CONNECTIVITY**WLAN + Bluetooth**

Wi-Fi® 6, 802.11ax 2x2 + BT5.2

WWAN

WWAN Not Supported

Ethernet

100/1000M (RJ-45)

Standard Ports

- 2x USB-A (USB 5Gbps / USB 3.2 Gen 1)
- 1x USB-C® (USB 5Gbps / USB 3.2 Gen 1), with USB PD 45-65W and DisplayPort™ 1.2
- 1x HDMI® 1.4b
- 1x Headphone / microphone combo jack (3.5mm)
- 1x Ethernet (RJ-45)
- 1x Round tip power connector

Docking

Various docking solutions supported via USB-C®. For more compatible docking solutions, please visit [Docking for Lenovo® V15 G5 IRL](#)

SECURITY & PRIVACY**Security Chip**

Discrete TPM 2.0 Enabled

Physical Locks

Kensington Nano Security Slot™, 2.5 x 6 mm

Fingerprint Reader

No Fingerprint Reader

Other Security

Camera privacy shutter

SERVICE**Base Warranty**

1-year, Courier or Carry-in

Included Upgrade

None

ACCESSORIES**Bundled Accessories**

None

CERTIFICATIONS**Green Certifications**

- ENERGY STAR® 9.0
- EPEAT™ Gold Registered^[5]
- ErP Lot 6/26
- RoHS compliant
- TCO Certified 9.0

Mil-Spec Test

MIL-STD-810H military test passed

Other Certifications

TÜV Rheinland® Low Blue Light (Software Solution)

MODEL

TopSeller : Yes **EAN / UPC / JAN:** 198153550777

Announce Date: 2025-10-07 **End of Support** : 2030-12-10

Note:

[1] The max memory is based on the test results with current Lenovo memory offerings.

[2] The storage capacity supported is based on the test results with current Lenovo storage offerings.

[3] The system dimensions may vary depending on configurations.

[4] The system weight is approximate and based on results in Lenovo lab, which varies depending on the source of component, variance of the distribution of each component, and manufacturing process. It may not be the exact weight for each specific model.

[5] EPEAT is registered where applicable, please visit [epeat.net](https://www.epeat.net) for registration status by country.

- Please refer to the official [Lenovo store website](#) or contact a local Lenovo sales representative or authorized business partner for current inventory and purchase options.
- Lenovo reserves the right to change specifications without notice.
 - California Electronic Waste Recycling Fee In California, per state law, Lenovo charges an electronic waste recycling fee on this covered device at the time of sale of the product. For more information, go to: <https://www.calrecycle.ca.gov/Electronics/Consumer>