

# Installation Guide

VIGI Network Video Recorder

\*Images may differ from actual products.  
©2024 TP-Link 7106511912 REV1.0.0



<https://support.vigi.com/>

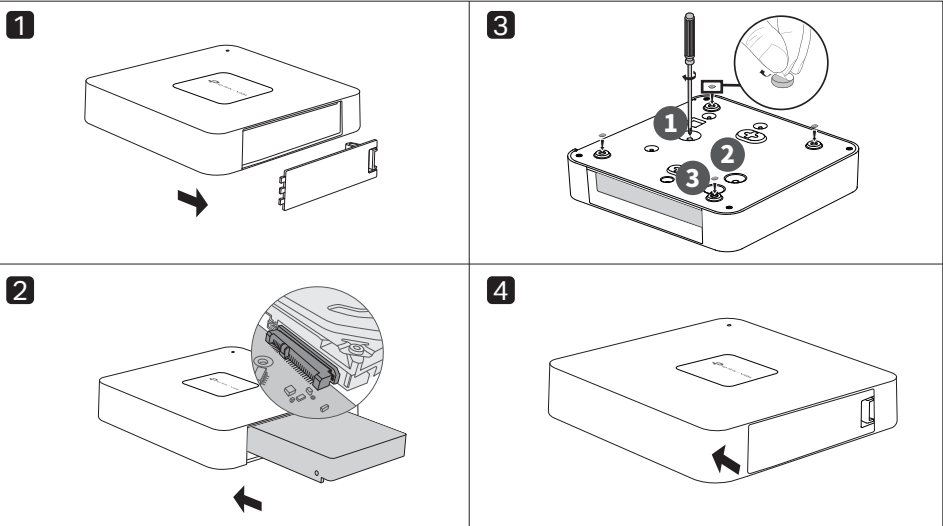


Set up with videos:  
Scan the QR code or visit <https://support.vigi.com/r/1007/> to search for the setup video of your product.

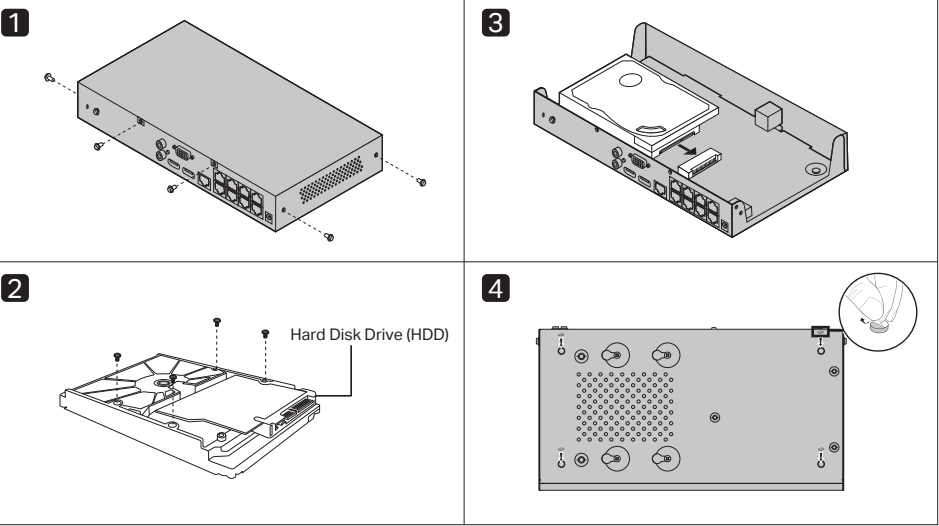


## 1. Hard Drive Installation

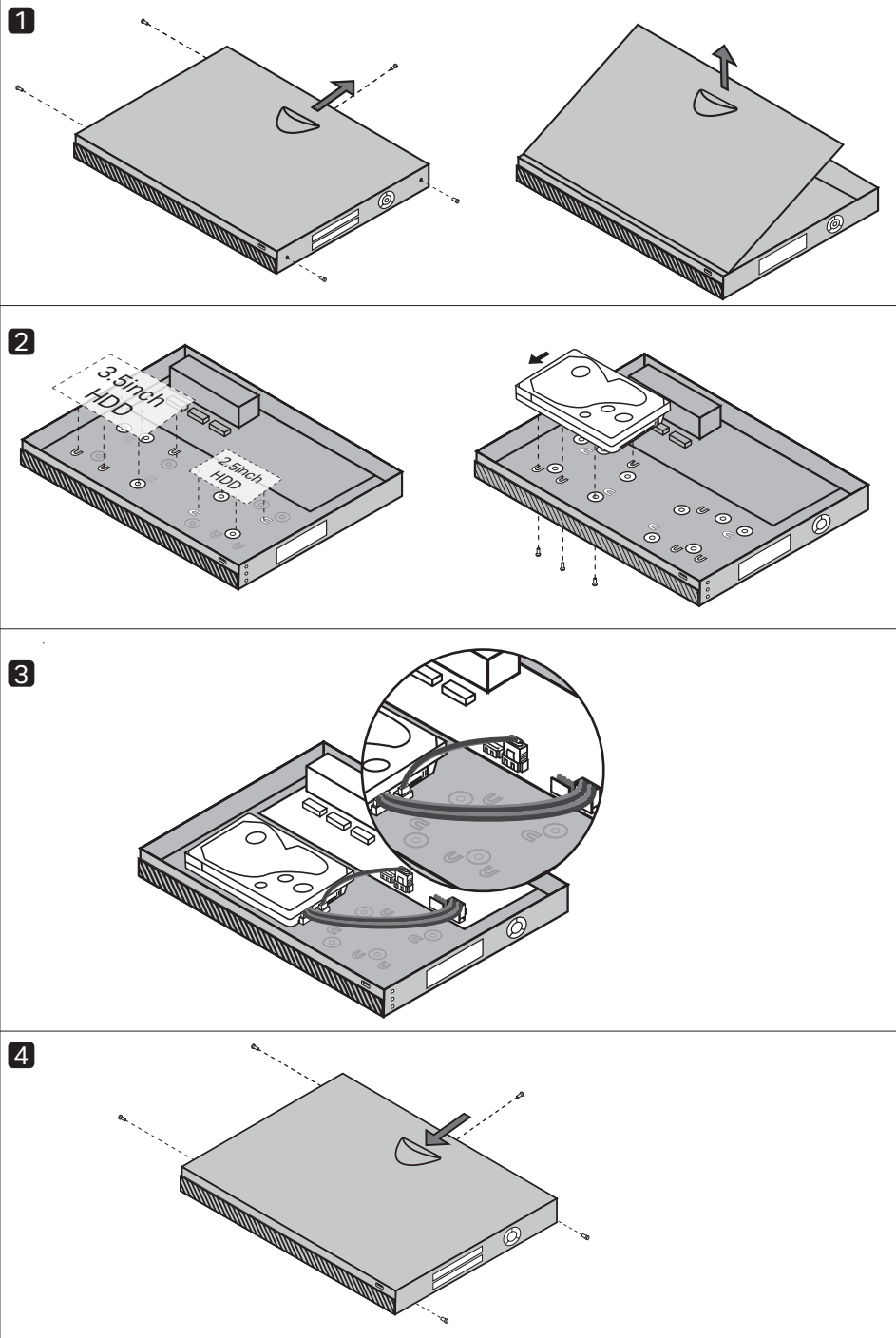
### 1-HDD\* \*Simple HDD Installation



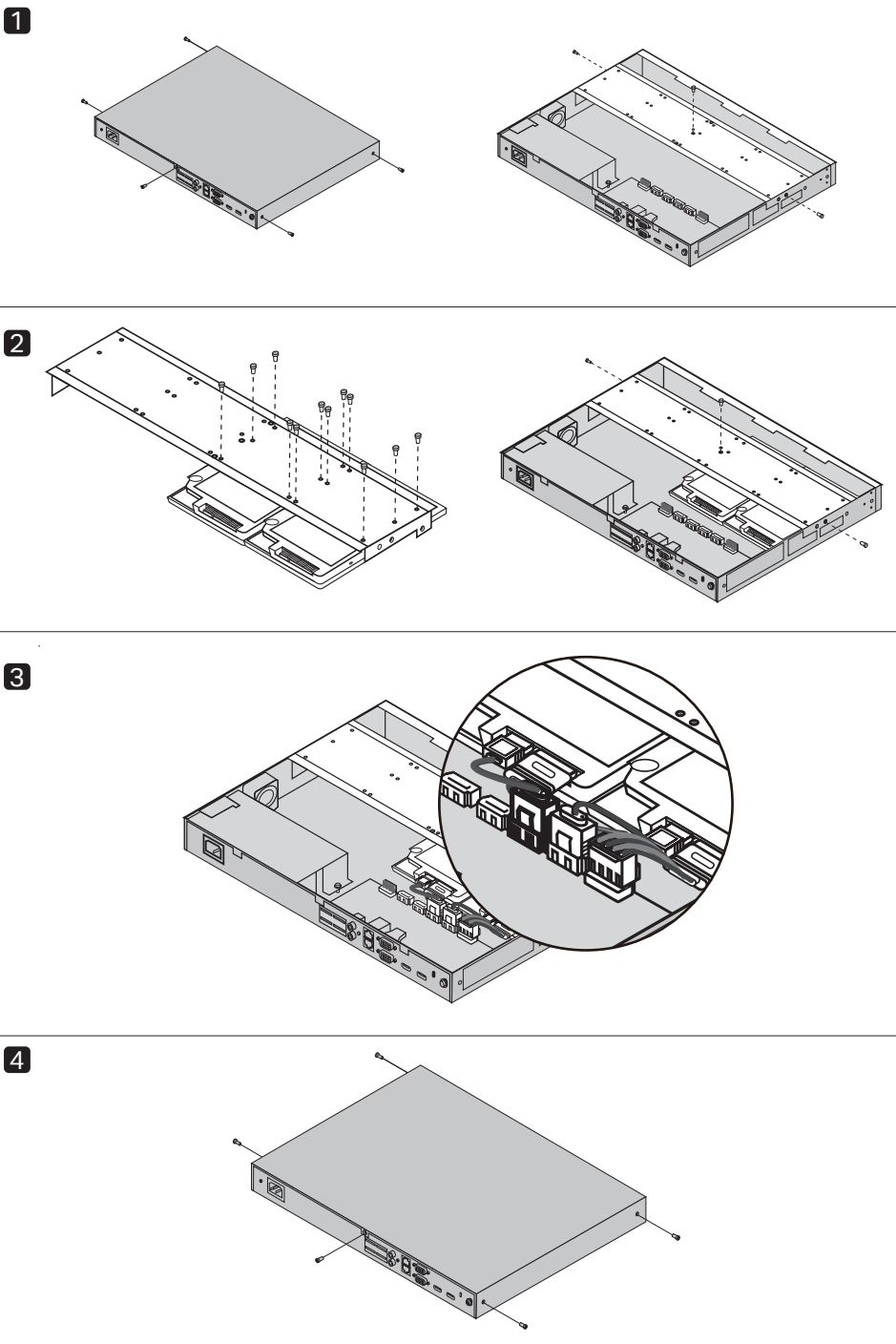
### 1-HDD



### 2-HDD

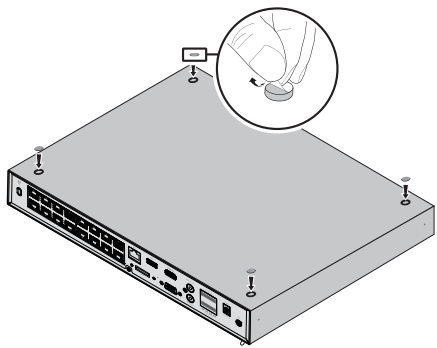


### 4-HDD



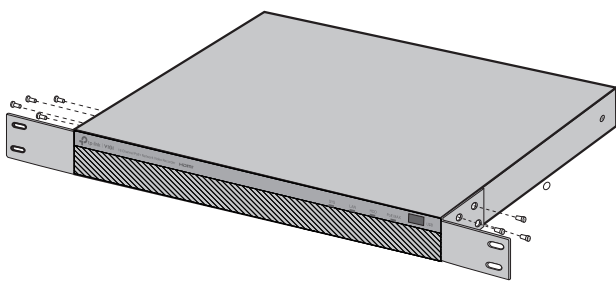
2. Product Installation

Desktop Installation

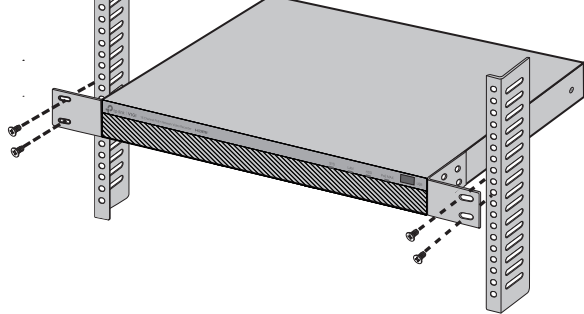


Rack Installation

1

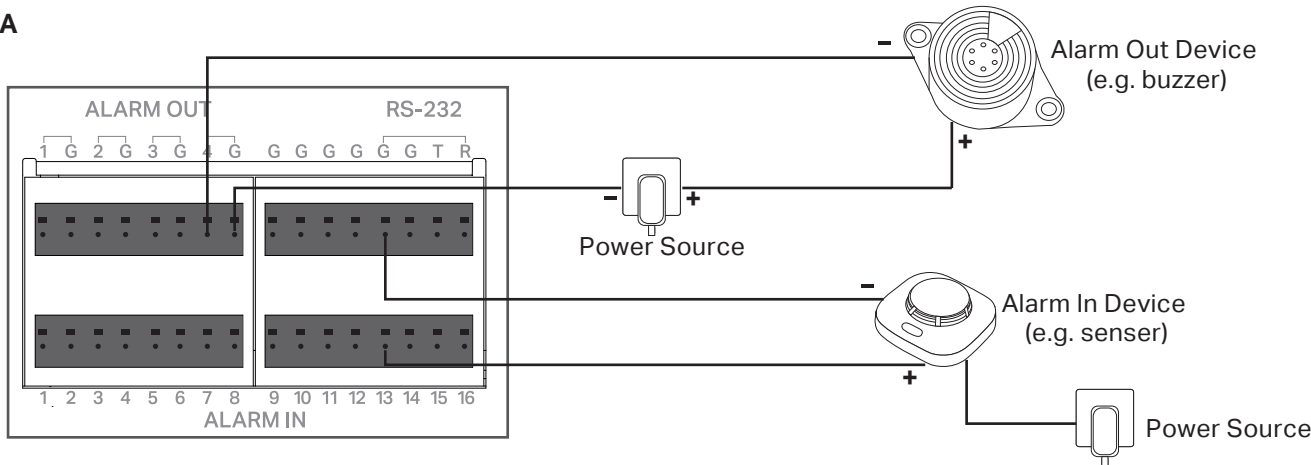


2



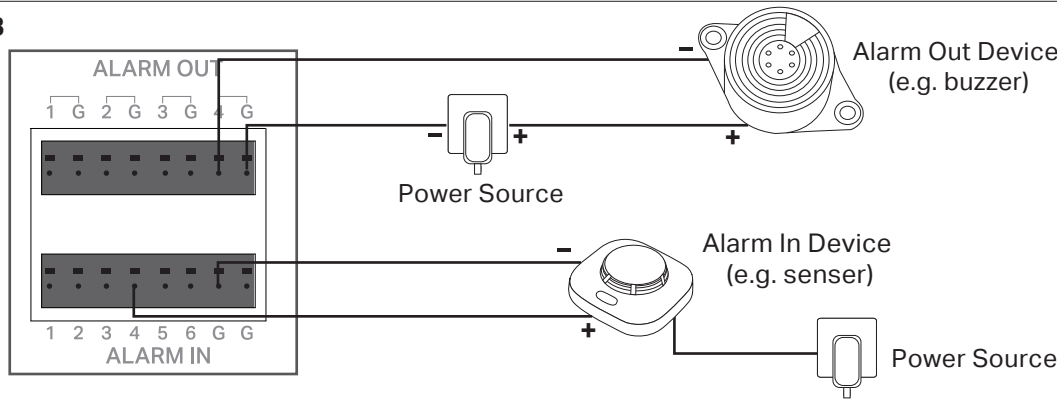
3. Connect Alarm Device (Optional)

Type A



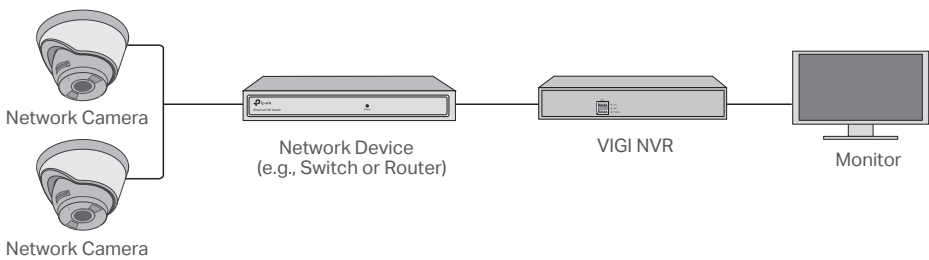
Scan for More Details

Type B



Scan for More Details

4. Configuration



- The NVR can be configured and managed via the GUI, TP-Link VIGI app, and web UI .
- The default web login address is <https://192.168.0.240>.
- Refer to the product manual for more details at the support website .

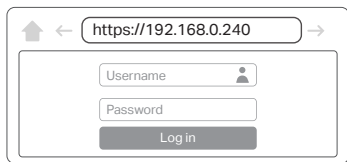
Via GUI



Via VIGI App



Via Web UI



Safety Information

- This device is restricted to indoor use only.
- Keep the device away from water, fire, humidity or hot environments.
- Do not attempt to disassemble, repair, or modify the device.
- Do not use damaged charger or USB cable to charge the device.
- Do not use any other chargers than those recommended.
- Adapter shall be installed near the equipment and shall be easily accessible.
- Use only power supplies which are provided by manufacturer and in the original packing of this product. If you have any questions, please don't hesitate to contact us.
- Avoid disposal of a battery into fire or a hot oven, or mechanically crushing or cutting of a battery, that can result in an explosion.
- Place the device with its bottom surface downward. Install it at stable places, and prevent it from falling.
- The plug on the power supply cord is used as the disconnect device the socket-outlet shall be easily accessible.
- The power adapter must be used indoors. Make sure that the temperature of the power adapter is within 0-40°C.
- The socket-outlet shall be installed near the equipment and shall be easily accessible. (For VIGI NVR2016H-16P, VIGI NVR2016H-16MP and VIGI NVR2008H-8MP)
- Plug the product into the wall outlets with earthing connection through the power supply cord. (For VIGI NVR2016H-16P, VIGI NVR2016H-16MP and VIGI NVR2008H-8MP)

This equipment is not suitable for use in locations where children are likely to be present, such as family environment, school, children's playground and so on.

CAUTION!

Risk of explosion if the battery is replaced by an incorrect type.

CAUTION!

Avoid replacement of a battery with an incorrect type that can defeat a safeguard.  
Avoid disposal of a battery into fire or a hot oven, or mechanically crushing or cutting of a battery, that can result in an explosion.  
Do not leave a battery in an extremely high temperature surrounding environment that can result in an explosion or the leakage of flammable liquid or gas;  
Do not leave a battery subjected to extremely low air pressure that may result in an explosion or the leakage of flammable liquid or gas.

CAUTION: Do not ingest battery, Chemical Burn Hazard

This product contains a coin/button cell battery. If the coin/button cell battery is swallowed, it can cause severe internal burns in just 2 hours and can lead to death.  
Keep new and used batteries away from children.  
If the battery compartment does not close securely, stop using the product and keep it away from children.  
If you think batteries might have been swallowed or placed inside any part of the body, seek immediate medical attention.

\*Some devices may be incompatible, such as wireless mouse.

Please read and follow the above safety information when operating the device. We cannot guarantee that no accidents or damage will occur due to improper use of the device. Please use this product with care and operate at your own risk.

EU Declaration of Conformity

For Class A products

TP-Link hereby declares that the device is in compliance with the essential requirements and other relevant provisions of directives 2014/30/EU, 2014/35/EU, 2011/65/EU and (EU)2015/863.

The original EU Declaration of Conformity may be found at <https://www.tp-link.com/en/support/ce/>

For Class B products

TP-Link hereby declares that the device is in compliance with the essential requirements and other relevant provisions of directives 2014/30/EU, 2014/35/EU, 2009/125/EC, 2011/65/EU and (EU)2015/863.

The original EU Declaration of Conformity may be found at <https://www.tp-link.com/en/support/ce/>

UK Declaration of Conformity

TP-Link hereby declares that the device is in compliance with the essential requirements and other relevant provisions of the Electromagnetic Compatibility Regulations 2016 and Electrical Equipment (Safety) Regulations 2016.

The original UK Declaration of Conformity may be found at <https://www.tp-link.com/support/ukca/>



For technical support, the user guide and other information, please visit <https://support.vigi.com/>, or simply scan the QR code.



To ask questions, find answers, and communicate with TP-Link users or engineers, join TP-Link Community.

The terms HDMI, HDMI High-Definition Multimedia Interface, HDMI trade dress and the HDMI Logos are trademarks or registered trademarks of HDMI Licensing Administrator, Inc.

