

## PERFORMANCE

### Processor

Intel® Core™ Ultra 9 185H, 16C (6P + 8E + 2LPE) / 22T, Max Turbo up to 5.1GHz, 24MB

### NPU

Intel® AI Boost integrated in Intel® Core™ Ultra processor

### Graphics

NVIDIA® GeForce RTX™ 4070 8GB GDDR6

### Chipset

Intel® SoC Platform

### Memory

32GB Soldered LPDDR5x-7467

### Memory Slots

Memory soldered to systemboard, no slots, dual-channel

### Max Memory

32GB soldered memory, not upgradable

### Storage

1TB SSD M.2 2280 PCIe® 4.0x4 NVMe®

### Storage Support<sup>[1][2]</sup>

Up to two drives, 2x M.2 SSD

- M.2 2280 SSD up to 1TB

### Storage Slot

Two M.2 2280 PCIe® 4.0 x4 slots

### Card Reader

SD Card Reader

### Optical

None

### Audio Chip

High Definition (HD) Audio, Realtek® ALC3306 codec

### Speakers

Models with discrete graphics:

6 stereo speakers, 2W x4 (dual side woofers), 2W x2 (tweeters), optimized with Dolby Atmos®, Smart Amplifier (AMP)

### Camera

5.0MP + IR with E-shutter

### Microphone

4x, Array

### Battery

Integrated 84Wh

### Power Adapter

170W Slim Tip (3-pin)

## DESIGN

### Display

16" 3.2K (3200x2000) Mini LED 1,200nits Anti-glare, 100% P3, 100% Adobe® RGB, 100% sRGB, 165Hz, Eyesafe®, Dolby Vision®, DisplayHDR™ 1000, TCON

### Touchscreen

None

### Color Calibration

Factory Color Calibration

### Keyboard

Backlit, Italian

### Touchpad

Buttonless glass surface multi-touch touchpad, supports Precision TouchPad (PTP), 95 x 150 mm (3.75 x 5.91 inches)

### Case Color

Tidal Teal

### Surface Treatment

Aluminium Stamping (Anodized with Sandblasting)

### Case Material

Aluminium (Top), Aluminium (Bottom)

### Dimensions (WxDxH)<sup>[3]</sup>

362.72 x 253.69 x 18.3 mm (14.28 x 9.99 x 0.72 inches)

### Weight<sup>[4]</sup>

Starting at 2.05 kg (4.52 lbs)

## SOFTWARE

### Operating System

Windows® 11 Home, Italian / English

### Bundled Software

Office Trial

## CONNECTIVITY

### Ethernet

No Onboard Ethernet

### WLAN + Bluetooth<sup>[5]</sup>

Wi-Fi® 6E, 11ax 2x2 + BT.5.3

### Standard Ports

- 1x USB-A (USB 5Gbps / USB 3.2 Gen 1)
- 1x USB-A (USB 5Gbps / USB 3.2 Gen 1), Always On
- 1x USB-C® (USB 20Gbps / USB 3.2 Gen 2x2), with USB PD 3.0 and DisplayPort™ 1.4
- 1x USB-C® (Thunderbolt™ 4 / USB4® 40Gbps), with USB PD 3.0 and DisplayPort™ 2.1
- 1x HDMI®, up to 4K/60Hz
- 1x Headphone / microphone combo jack (3.5mm)
- 1x SD card reader
- 1x Power connector

## SECURITY & PRIVACY

### Security Chip

Firmware TPM 2.0

### Fingerprint Reader

None

### Other Security

- IR camera for Windows® Hello (facial recognition)
- E-shutter

## SERVICE

### Base Warranty

1-year, Courier or Carry-in

### Included Upgrade

None

## ACCESSORIES

### Bundled Accessories<sup>[6]</sup>

None

## CERTIFICATIONS

### Green Certifications<sup>[7]</sup>

- Carbon Neutral Certified
- ENERGY STAR® 8.0
- EPEAT™ Gold Registered
- ErP Lot 6
- ErP Lot 26
- RoHS compliant

### Other Certifications

- Intel® Evo™ Platform
- Eyesafe® Certified 2.0
- TÜV Rheinland® Low Blue Light (Hardware Solution)

### Mil-Spec Test

MIL-STD-810H military test passed (21 test items)

## MODEL

**TopSeller** : No **Announce Date** : 2024-03-20

**EAN / UPC / JAN** : 198153605248 **End of Support** : 2030-02-12

Note:

<sup>[1]</sup> The storage capacity supported is based on the test results with current Lenovo storage offerings.

<sup>[2]</sup> The system supports dual SSD via two M.2 slots, but Lenovo only offers one SSD configuration and another SSD slot for user self-extension.

<sup>[3]</sup> The system dimensions may vary depending on configurations.

<sup>[4]</sup> The system weight is approximate and based on results in.....

• Lenovo reserves the right to change specifications without notice.

To see more note information, please link to

<https://psref.lenovo.com/Detail/2395?M=83DN005WIX>

## Premium Care - Advanced Support from Real People. Real Fast.



### REAL PERSON

Choose how you want to reach us - through the phone, chat or email - our expert technicians will take care of you.



### REAL FAST

Highly trained technicians will provide you real-time solutions, whatever the issue, on your first contact. If needed, our team will schedule an onsite visit for the next business day.



### HASSLE FREE

'Getting started' and 'how-to' assistance for hardware and software. Easy solutions that are simple to reach - that's how Premium Care delivers you the ideal support experience.



### PC HEALTH CHECK

Free annual PC Health Check that allows our experts to spot issues before you do so they can resolve them quickly and help you avoid PC problems.

## Accidental Damage Protection - Protection of your PC from the unexpected.

Experience shows that a significant portion of devices may be damaged (and not covered under warranty) in the first three years. Lenovo's Accidental Damage Protection service covers accidents beyond the system warranty such as drops, spills, bumps and even electrical surges. Make sure your new device has maximum protection, avoid unplanned costs and get peace of mind.

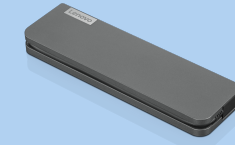
## Base Warranty – Included with the systems you purchase, default 1- or 3-year coverage window.

## Warranty Extensions & Upgrades – Service and protection that's right for your circumstances.

- Pick Up & Return Courier
- Onsite Support
- Technician Installed Customer
- Replaceable Unit Service
- International Warranty Upgrade

Lenovo may not offer the products, services or features discussed in this document in all regions. Lenovo may withdraw an offering at any time. Consult your local representative for information on offerings available in your area. Lenovo reserves the right to change specifications or other product information without notice. Lenovo is not responsible for photographic or typographical errors. Lenovo provides this publication "as is" without warranty of any kind, either express or implied, including the implied warranties of merchantability or fitness for a particular purpose.

## Recommended Accessories



### Lenovo USB-C Mini Dock\_US

40AU0065US

Expand Your Potential with An Universal Mini Dock; Lenovo understands that modern business depends on a wide variety of PC's and even brands to meet their business needs. To make this easier Lenovo USB-C Mini dock is ...

## Recommended Services

BEST	4Y Premium Care with Onsite upgrade from 1Y Courier/Carry-in (5WSOW36573)
BETTER	3Y Premium Care with Onsite upgrade from 1Y Courier/Carry-in (5WSOT73708)
GOOD	3Y Courier/Carry-in upgrade from 1Y Courier/Carry-in (5WSOK76347)

For a full list of accessories and services, please visit: <https://smartfind.Lenovo.com>



**PSREF**  
Product Specifications  
Reference