

PERFORMANCE

Processor^[1]

Intel® Core™ i7-13700T, 16C (8P + 8E) / 24T, Max Turbo up to 4.9GHz, P-core 1.4 / 4.8GHz, E-core 1.0 / 3.6GHz, 30MB

Graphics

Integrated Intel® UHD Graphics 770

Chipset

Intel® Q670 Chipset

Memory

1x 16GB SO-DIMM DDR4-3200

Memory Slots

Two DDR4 SO-DIMM slots, dual-channel capable

Max Memory^[2]

Up to 64GB DDR4-3200

Storage

512GB SSD M.2 2280 PCIe® 4.0x4 NVMe® Opal 2.0

Storage Support^[3]

Up to two drives, 1x 2.5" HDD + 1x M.2 SSD

- 2.5" HDD up to 1TB
- M.2 SSD up to 2TB

Card Reader

No card reader

Audio Chip

High Definition (HD) Audio, Realtek® ALC256VB codec

Speakers

2Wx1

Power Supply^[4]

135W 90% Adapter

DESIGN

Keyboard

USB Traditional Keyboard, Black, German

Mouse

USB Calliope Mouse, Black

Optional Bay

2.5" HDD Bracket

Expansion Slots

Two M.2 slots (one for WLAN, one for SSD)

Case Color

Black

Toolless Chassis Screw

Toolless Chassis Screw

Dust Filter

Dust Filter

Mounting

1x VESA Mount

IO Box

No IO box

Form Factor

Tiny (1L)

Dimensions (WxDxH)^[5]

179 x 182.9 x 36.5 mm with rubber feet (7.05 x 7.2 x 1.44 inches)

Weight^[6]

Around 1.25 kg (2.76 lbs)

CONNECTIVITY

Ethernet

Integrated 100/1000M

WLAN + Bluetooth^[7]

Intel® Wi-Fi® 6E AX211, 11ax 2x2 + BT5.3, vPro®

Front Ports

- 1x USB-C® 3.2 Gen 1 (support data transfer and 5V@0.9A charging)
- 1x USB 3.2 Gen 2 (Always On and 5V@2.1A charging)
- 1x USB 3.2 Gen 2
- 1x headphone / microphone combo jack (3.5mm)

Rear Ports

- 1x USB 2.0
- 1x USB 3.2 Gen 1
- 2x USB 3.2 Gen 2
- 1x HDMI® 2.1 TMDS
- 1x DisplayPort™ 1.4a (HBR2, DSC)
- 1x Ethernet (RJ-45)

SECURITY & PRIVACY

Security Chip

Discrete TPM 2.0, TCG certified

Fingerprint Reader

No fingerprint reader

Physical Locks

Kensington® Security Slot™, 3 x 7 mm

Chassis Intrusion Switch

Chassis Intrusion Switch

MANAGEABILITY

System Management

Intel® vPro® Enterprise

SERVICE

Base Warranty

1-year, Onsite

Included Upgrade

3Y Onsite upgrade from 1Y Onsite, 1Y Premier Support TC DT/AIO Mainstream/Halo WHB (CPN)

CERTIFICATIONS

Green Certifications

- ErP Lot 3 and Lot 7
- RoHS compliant
- TCO Certified

Other Certifications

TÜV Rheinland® Low Noise

Mil-Spec Test

MIL-STD-810H military test passed (Low Pressure [Altitude], High Temperature, Low Temperature, Humidity, Sand and Dust, Vibration, Shock, Solar Radiation, Contamination by Fluids, Salt Fog, Temperature Shock)

MODEL

TopSeller : Yes

Announce Date : 2023-06-20

EAN / UPC / JAN : 0197528796055

End of Support : 2029-10-14



intel

Product image is a sample, it may not match the real color of this model

Note:

[1] Intel Max Turbo frequency will vary depending on application workload and the hardware and software configurations, see <http://www.intel.com/technology/turboboost/> for more information.

[2] The max memory is based on the test results with current Lenovo memory offerings.

[3] The max capacity of each disk type is based on the test results with current Lenovo storage offerings.

[4] When work with TIO monitor, an appropriate power adapter.....

· Lenovo reserves the right to change specifications without notice.

To see more note information, please link to

<https://psref.lenovo.com/Detail/2186?M=12E30015GE>

Premier Support - A direct 24x7x365 line to our most elite technicians.



Advanced technical support, 24x7x365, in more than 100 markets



Technical Account Managers for proactive relationship and escalation management



Comprehensive hardware & OEM software support



Priority on service delivery and repair parts



Single point of contact for simplified end-to-end case management



Lenovo Service Connect Portal for customized reporting and product support

Accidental Damage Protection - Protection of your PC from the unexpected.

Experience shows that a significant portion of devices may be damaged (and not covered under warranty) in the first three years. Lenovo's Accidental Damage Protection service covers accidents beyond the system warranty such as drops, spills, bumps and even electrical surges. Make sure your new device has maximum protection, avoid unplanned costs and get peace of mind.

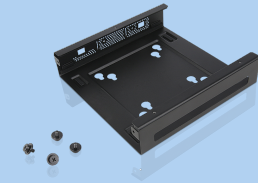
Base Warranty - Included with the systems you purchase, default 1- or 3-year coverage window.

Warranty Extensions & Upgrades - Service and protection that's right for your circumstances.

- Pick Up & Return Courier
- Onsite Support
- Technician Installed Customer
- Replaceable Unit Service
- International Warranty Upgrade

Lenovo may not offer the products, services or features discussed in this document in all regions. Lenovo may withdraw an offering at any time. Information is subject to change without notice. Consult your local representative for information on offerings available in your area. Lenovo reserves the right to change specifications or other product information without notice. Lenovo is not responsible for photographic or typographical errors. Lenovo provides this publication "as is" without warranty of any kind, either express or implied, including the implied warranties of merchantability or fitness for a particular purpose.

Recommended Accessories



ThinkCentre Tiny VESA Mount II

4XFON03161

The ThinkCentre Tiny VESA Mount II is a unique design specific to house the Tiny PC while featuring the universal VESA mount configuration. The VESA standard enables this mount to attach to anything that is VESA comp...

Recommended Services

BEST	5Y Premier Support upgrade from 1Y Premier Support (5WS1F52290)
BETTER	3Y Premier Support upgrade from 1Y Premier Support (5WS1B61713)
GOOD	2Y Premier Support upgrade from 1Y Premier Support (5WS1B61705)

For a full list of accessories and services, please visit:
<https://smartfind.Lenovo.com>



PSREF
Product Specifications
Reference