



The product images are for illustration purposes only. Actual product appearance, ports, keyboard layout, and accessories may vary by model.

- MediaTek Kompanio 838 (8C, 2x A78 @2.6GHz + 6x A55 @2.0GHz)
- 4GB Soldered LPDDR4X-3733
- 64GB eMMC 5.1
- Integrated Arm Mali-G57 MC3 GPU
- ChromeOS
- Case color - Luna Grey
- 1-year, Mail-in

**Premium Care - Advanced Support from Real People. Real Fast.**



**REAL PERSON**

Choose how you want to reach us - through the phone, chat or email - our expert technicians will take care of you.



**REAL FAST**

Highly trained technicians will provide you real-time solutions, whatever the issue, on your first contact. If needed, our team will schedule an onsite visit for the next business day.



**HASSLE FREE**

'Getting started' and 'how-to' assistance for hardware and software. Easy solutions that are simple to reach - that's how Premium Care delivers you the ideal support experience.



**PC HEALTH CHECK**

Free annual PC Health Check that allows our experts to spot issues before you do so they can resolve them quickly and help you avoid PC problems.

**Accidental Damage Protection - Protection of your PC from the unexpected.**

Experience shows that a significant portion of devices may be damaged (and not covered under warranty) in the first three years. Lenovo's Accidental Damage Protection service covers accidents beyond the system warranty such as drops, spills, bumps and even electrical surges. Make sure your new device has maximum protection, avoid unplanned costs and get peace of mind.

**Base Warranty** - Included with the systems you purchase, default 1- or 3-year coverage window.

**Warranty Extensions & Upgrades** - Service and protection that's right for your circumstances.

- Pick Up & Return Courier
- Onsite Support
- Technician Installed Customer
- Replaceable Unit Service
- International Warranty Upgrade

**Recommended Accessories** United Kingdom



**ThinkPad Bluetooth Presenter Mouse (Aura Edition)**

4Y51T62792



**Lenovo Analog In-Ear Headphones Gen II Bulk Package (20pcs)**

4XD1T54899



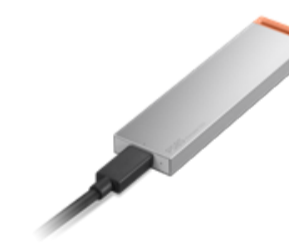
**Lenovo Legion 17" Gaming Backpack GB800 (Light Gray)**

GX41U39300



**Lenovo Dual USB-C 65W GaN Charger**

GOA6065WUK



**Lenovo PS8S Portable SSD 4TB**

4XB1T91892



**Lenovo USI Pen 2 Magnetic**

GX81Q72385

>> [View More Accessories](#)

**PERFORMANCE****Processor**

MediaTek Kompanio 838 (8C, 2x A78 @2.6GHz + 6x A55 @2.0GHz)

**NPU**

Integrated MediaTek NPU 650, up to 4 TOPS

**Graphics**

Integrated Arm Mali-G57 MC3 GPU

**Chipset**

MediaTek SoC Platform

**Memory<sup>[1]</sup>**

4GB Soldered LPDDR4X-3733

**Memory Slots**

Memory soldered to systemboard, no slots, dual-channel

**Max Memory**

4GB soldered memory, not upgradable

**Storage**

64GB eMMC 5.1

**Storage Slot**

eMMC on systemboard, no slots

**Max Storage Support<sup>[2]</sup>**

64GB eMMC 5.1 on systemboard

**Card Reader**

No card reader

**Audio Chip**

High Definition (HD) Audio

**Speakers**

Stereo speakers, 1W x2, optimized with Waves MaxxAudio®, Smart Amplifier (AMP)

**Microphone**

2x, Array

**Camera**

Front 5.0MP with Privacy Shutter / Rear 8.0MP

**Battery**

29Wh

**Power Adapter**

45W USB-C® (3-pin)

**DESIGN****Display<sup>[3]</sup>**

10.95" WUXGA (1920x1200) IPS 400nits Glossy / Anti-fingerprint, 72% NTSC, 60Hz, Gorilla® Glass 3, Touch

**Touchscreen**

In-cell, 10-point Multi-touch

**Pen**

Pen Upgradable (Purchase Separately)

**Keyboard**

None

**Touchpad**

Mylar® surface one-piece multi-touch trackpad on the keyboard, 48.8 x 86.8 mm (1.92 x 3.42 inches)

**Dimensions (WxDxH)<sup>[4]</sup>**

273.92 x 173.72 x 14.35 mm (10.78 x 6.84 x 0.56 inches)

**Weight<sup>[5]</sup>**

Around 805 g (1.77 lbs)

**Case Color**

Luna Grey

**Case Material**

PU

**Surface Treatment**

Anodizing Sandblasting

**Others**

Buttons: power key, volume key

**SOFTWARE****Operating System**

ChromeOS

**Bundled Software**

None

**CONNECTIVITY****WLAN + Bluetooth**

Wi-Fi® 6, 802.11ax 2x2 + BT5.3

**WWAN**

WWAN Not Supported

**SIM Card**

No physical SIM card inbox

**Ethernet**

No Onboard Ethernet

**Standard Ports**

- 2x USB-C® (USB 5Gbps / USB 3.2 Gen 1), with USB PD 3.0 and DisplayPort™ 1.4
- 1x Headphone / microphone combo jack (3.5mm)
- 1x Pogo pin connector (3-point)

**Docking**

- Chromebook folio keyboard with touchpad (Pogo pin, detachable)
- Various docking solutions are supported via USB-C®. For more compatible docking solutions, please visit [Docking for Lenovo® Chromebook Duet EDU G2](#)

**SECURITY & PRIVACY****Security Chip**

Google Security Chip H1

**Fingerprint Reader**

No Fingerprint Reader

**Other Security**

Camera privacy shutter

**SERVICE****Base Warranty**

1-year, Mail-in

**Included Upgrade**

None

**ACCESSORIES****Bundled Accessories**

None

**CERTIFICATIONS****Green Certifications<sup>[6]</sup>**

- ENERGY STAR® 8.0
- EPEAT™ Gold Registered
- ErP Lot 6/26
- RoHS compliant

**Mil-Spec Test**

MIL-STD-810H military test passed

**Other Certifications**

- ASTM F963 test passed
- TÜV Rheinland® Low Blue Light (Hardware Solution)

**MODEL**

**Product** : LNV Chrome Duet EDU G2  
**TopSeller** : Yes **EAN / UPC / JAN**: 198153586189  
**Announce Date**: 2024-08-15 **End of Support** : N/A

**Note:**

[1] Installed memory is actually LPDDR4X-4266 but runs as LPDDR4X-3733 due to processor limitation.

[2] The storage capacity supported is based on the test results with current Lenovo storage offerings.

[3] IPS (in-plane switching) technology may refer to IPS, PLS, ADS, AHVA, AAS.

[4] The system dimensions may vary depending on configurations.

[5] The system weight is approximate and based on results in Lenovo lab, which varies depending on the source of component, variance of the distribution of each component, and manufacturing process. It may not be the exact weight for each specific model.

[6] EPEAT registration and ENERGY STAR certification are optional and only available on the models with preloaded OS. Please visit [epeat.net](https://www.epeat.net) and [energystar.gov](https://www.energystar.gov) for more information.

- Please refer to the official [Lenovo store website](#) or contact a local Lenovo sales representative or authorized business partner for current inventory and purchase options.
- Lenovo reserves the right to change specifications without notice.
  - California Electronic Waste Recycling Fee In California, per state law, Lenovo charges an electronic waste recycling fee on this covered device at the time of sale of the product. For more information, go to: <https://www.calrecycle.ca.gov/Electronics/Consumer>