



intel

intel

The product images are for illustration purposes only. Actual product appearance, ports, keyboard layout, and accessories may vary by model.

- Intel N200 (4C / 4T, Max Turbo up to 3.7GHz, 6MB Intel Smart Cache)
- 8GB Soldered LPDDR5-4800
- 128GB eMMC 5.1
- Integrated Intel UHD Graphics
- ChromeOS
- Case color - Graphite Grey
- 1-year, Mail-in

Premium Care - Advanced Support from Real People. Real Fast.



REAL PERSON

Choose how you want to reach us - through the phone, chat or email - our expert technicians will take care of you.



REAL FAST

Highly trained technicians will provide you real-time solutions, whatever the issue, on your first contact. If needed, our team will schedule an onsite visit for the next business day.



HASSLE FREE

'Getting started' and 'how-to' assistance for hardware and software. Easy solutions that are simple to reach - that's how Premium Care delivers you the ideal support experience.



PC HEALTH CHECK

Free annual PC Health Check that allows our experts to spot issues before you do so they can resolve them quickly and help you avoid PC problems.

Accidental Damage Protection - Protection of your PC from the unexpected.

Experience shows that a significant portion of devices may be damaged (and not covered under warranty) in the first three years. Lenovo's Accidental Damage Protection service covers accidents beyond the system warranty such as drops, spills, bumps and even electrical surges. Make sure your new device has maximum protection, avoid unplanned costs and get peace of mind.

Base Warranty - Included with the systems you purchase, default 1- or 3-year coverage window.

Warranty Extensions & Upgrades - Service and protection that's right for your circumstances.

- Pick Up & Return Courier
- Onsite Support
- Technician Installed Customer
- Replaceable Unit Service
- International Warranty Upgrade

Recommended Accessories United Kingdom



Lenovo Essential Stereo Analog Headset

4XD0K25030



ThinkPad Bluetooth Presenter Mouse (Aura Edition)

4Y51T62792



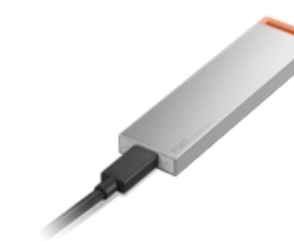
Lenovo Legion 17" Gaming Backpack GB800 (Light Gray)

GX41U39300



Lenovo Dual USB-C 65W GaN Charger

GOA6065WUK



Lenovo PS8S Portable SSD 4TB

4XB1T91892



Lenovo USI Pen 2 Magnetic

GX81Q72385

>> [View More Accessories](#)

PERFORMANCE**Processor**

Intel® N200 (4C / 4T, Max Turbo up to 3.7GHz, 6MB Intel® Smart Cache)

Graphics

Integrated Intel® UHD Graphics

Chipset

Intel® SoC Platform

Memory^[1]

8GB Soldered LPDDR5-4800

Memory Slots

Memory soldered to systemboard, no slots

Max Memory

8GB soldered memory, not upgradable

Storage

128GB eMMC 5.1

Storage Slot

eMMC on systemboard, no slots

Max Storage Support^[2]

128GB eMMC 5.1 on systemboard

Card Reader

No card reader

Audio Chip

High Definition (HD) Audio

Speakers

Stereo speakers, 2W x2, optimized with Waves MaxxAudio®, Smart Amplifier (AMP)

Microphone

2x, Array (Front) + Mono (Rear)

Camera

Front HD 720p with Privacy Shutter / Rear 5.0MP

Battery

47Wh

Power Adapter

65W USB-C® (2-pin)

DESIGN**Display^[3]**

12.2" WUXGA (1920x1200) IPS 300nits Glossy / Anti-fingerprint, 50% NTSC, 60Hz, Corning® Gorilla® Glass, TÜV Low Blue Light, Touch

Touchscreen

OGS, 10-point Multi-touch

Pen

Lenovo® USI Pen 2 (Garaged)

Keyboard

Non-backlit, English

Touchpad

Buttonless Mylar® surface multi-touch touchpad, 60.5 x 104 mm (2.38 x 4.09 inches)

Dimensions (WxDxH)^[4]

287 x 208 x 18.9 mm (11.3 x 8.2 x 0.74 inches)

Weight^[5]

Starting at 1.32 kg (2.91 lbs)

Case Color

Graphite Grey

Case Material

PC-ABS + 15% Talc+ TPU (Top), PC-ABS + 15% Talc (Bottom)

Surface Treatment

Texture

Others

Buttons: power key, volume key

SOFTWARE**Operating System**

ChromeOS

Bundled Software

None

CONNECTIVITY**WLAN + Bluetooth**

Intel® Wi-Fi® 6E AX211, 802.11ax 2x2 + BT5.1

WWAN

Quectel EM060K-GL, 4G LTE CAT6, with Embedded eSIM

SIM Card

No physical SIM card inbox

Ethernet

No Onboard Ethernet

Standard Ports

- 2x USB 3.2 Gen 1
- 1x USB-C® 3.2 Gen 2 (support data transfer, Power Delivery and DisplayPort™)
- 1x HDMI® 1.4
- 1x Headphone / microphone combo jack (3.5mm)

Docking

Various docking solutions supported via USB-C®. For more compatible docking solutions, please visit [Docking for Lenovo® 500e Yoga® Chromebook Gen 4](#)

SECURITY & PRIVACY**Security Chip**

Google Security Chip H1

Physical Locks

Kensington Nano Security Slot™, 2.5 x 6 mm

Fingerprint Reader

No Fingerprint Reader

Other Security

Camera privacy shutter

SERVICE**Base Warranty**

1-year, Mail-in

Included Upgrade

None

ACCESSORIES**Bundled Accessories**

None

CERTIFICATIONS**Green Certifications**

- ENERGY STAR® 9.0
- EPEAT™ Gold Registered^[6]
- ErP Lot 6/26
- RoHS compliant
- TCO Certified 9.0

Mil-Spec Test

MIL-STD-810H military test passed

Other Certifications

- ASTM F963 test passed
- TÜV Rheinland® Low Blue Light (Hardware Solution)

MODEL

TopSeller : Yes **EAN / UPC / JAN:** 198155092893
Announce Date: 2024-08-20 **End of Support** : N/A

Note:

- [1] Installed memory is actually LPDDR5-6400 but runs as LPDDR5-4800 due to platform limitation.
- [2] The storage capacity supported is based on the test results with current Lenovo storage offerings.
- [3] IPS (in-plane switching) technology may refer to IPS, PLS, ADS, AHVA, AAS.
- [4] The system dimensions may vary depending on configurations.
- [5] The system weight is approximate and based on results in Lenovo lab, which varies depending on the source of component, variance of the distribution of each component, and manufacturing process. It may not be the exact weight for each specific model.
- [6] EPEAT is registered where applicable, please visit [epeat.net](https://www.epeat.net) for registration status by country.

- Please refer to the official [Lenovo store website](#) or contact a local Lenovo sales representative or authorized business partner for current inventory and purchase options.
- Lenovo reserves the right to change specifications without notice.
 - California Electronic Waste Recycling Fee In California, per state law, Lenovo charges an electronic waste recycling fee on this covered device at the time of sale of the product. For more information, go to: <https://www.calrecycle.ca.gov/Electronics/Consumer>