

TOUCHSCREENS**INFORMATION**

65" All-in-One PCAP Interactive Display inspired by technology and designed for creative spaces and sharing

Enjoy an all-in-one interactive display that combines the best in PCAP Touchscreen technology, offering the versatility and freedom of Android OS, easily customized to your needs by installing applications directly to it. Offering a powerful, yet flexible user experience, fostering creative communication with the benefits of a secure and controllable Touchscreen.



The refined edge-to-edge glass design of the TF6539AS-B1AG lends itself for integration into a large variety of environments where polished design and functionality are needed, like Huddle spaces in the modern office space, Retail shops and Kiosks.

The on-board [iiSignage² CMS](#) (Content Management System) gives you total control of your messaging and advertising, remotely and safely. The [EShare App](#) enables you to bring effortless ideation and efficient collaboration in your enterprise or school. You can start sharing wireless easier than ever before.

For ease of integration, the TF6539AS-B1AG can be equipped with optional external mounting brackets ([OMK4-2](#)).



Android OS

Thanks to Android OS, you can easily customize the display to your needs by installing applications directly to it.

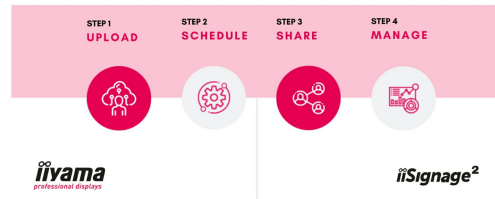


Signal FailOver

FailOver is a feature which automatically detects input sources. When there is no signal on the default input it will automatically switch to the next available input. FailOver allows customers to prioritize a number of inputs (incl. Browser, Media Player and Custom) and ensures your content is always actively displayed, assuring active content at all times.

4 SIMPLE STEPS

TO REACH YOUR AUDIENCE



iiSignage²

iiSignage² is our digital signage content management platform to easily show and control your content and to manage your displays in a secure way. The Content Management System (CMS) gives you total control of your messaging and advertising remotely and safely.



Touch Through-Glass

This through glass touch screen works right through glass and can turn glass surfaces into an interactive touch screen display. Use it on storefront windows, real estate office, in-store for POS or restaurants.

SPECIFICATION

01 DISPLAY CHARACTERISTICS

Design	Edge to edge glass, Open Frame
Diagonal	64.5", 163.9cm
Panel	IPS LED, AG coated glass, matte finish
Native resolution	3840 x 2160 @60Hz (8.3 megapixel 4K UHD)
Aspect ratio	16:9
Panel brightness	500 cd/m ²
Brightness	435 cd/m ² with touch
Light transmittance	87%
Static contrast	1200:1
Response time (GTG)	8ms
Viewing zone	horizontal/vertical: 178°/178°, right/left: 89°/89°, up/down: 89°/89°
Colour support	1.07G (8 Bits+FRC) (72% NTSC)
Horizontal Sync	28 - 160kHz
Viewable area W x H	1428.5 x 803.5mm, 56.2 x 31.6"
Bezel width (sides, top, bottom)	31.5mm, 31.5mm, 31.5mm
Pixel pitch	0.372mm
Bezel colour and finish	black, matte

02 TOUCH

Touch technology	bonded PCAP
Touch points	40
Touch accuracy	+/- 2.5mm
Touch method	stylus, finger, glove (latex)
Touch interface	USB
Supported operating systems	All iiyama monitors are Plug & Play and compatible with Windows and Linux. For details regarding the supported OS for the touch models, please refer to the driver instruction file available in the downloads section.
Through-Glass	6mm
Palm rejection	yes

03 INTERFACES / CONNECTORS / CONTROLS

Digital signal input	HDMI x2 (2.0, max. 3840x2160 @60Hz) DisplayPort x1 (1.2, max. 3840x2160 @60Hz)
Monitor control input	RS-232c x1 (Get/Set Command) RJ45 (LAN) x1 (Control and Internet)
Audio output	Mini jack x1 Speakers 2 x 10W
HDCP	2.2

USB ports x2 (2.0 x2 (Type A))

04 FEATURES

Integrated software	Android 11 OS, iiSignage ² , EShare, FailOver
Hardware	CPU: A73*4+A53*4, GPU: G52 MP8, RAM: 4GB, ROM: 32GB
Extra	handles, Touch Through-Glass
Kiosk mode	yes
Max. non-stop operating time	24/7
Anti image retention	yes
Glass thickness	4mm
Glass hardness	7H
60950 Ball drop test	yes
Water and dust protection	IP65 (front)
Housing (bezel)	metal
OSD key lock	yes
Remote control lock	yes

05 GENERAL

OSD languages	EN, DE, FR, ES, IT, RU, CZ, NL, PL, SV, FI, DA, NB
Control buttons	Power
User controls	picture (brightness, contrast, sharpness, back level, tint, colour, noise reduction, gamma selection, low blue light, colour temp., colour control, overscan, picture reset), screen (zoom mode, custom zoom, screen reset), audio (balance, treble, bass, volume, audio out (line out), max. volume, min. volume, mute, audio reset, audio out sync, speaker setting), configuration 1 (Android launcher, switch on state, Touch lock, Touch mode, mouse mode, panel saving, RS232 routing, boot on source, WOL, conf.1 reset, factory reset), configuration 2 (OSD timeout, OSD H position, OSD V position, system rotation, info OSD, logo and animation, logo setting, animation setting, monitor ID, monitor info, HDMI version, conf. 2 reset), advanced options (kiosk mode, side bar, no signal image, motorized stand, IR control, power LED light, fan, off timer, schedule, HDMI with one wire, HDMI with one wire off, failover, language, OSD transparency, power saving, advanced options reset)
Plug&Play	DDC2B

06 MECHANICAL

Orientation	landscape, portrait, face-up
VESA mounting	400 x 400mm
Mini PC mount	VESA 100 x 100, NUC INTEL
Operation temperature range	0°C - 40°C
Storage temperature range	- 20°C - 60°C
MTBF	50000 hours (excluding backlight)

07 ACCESSORIES INCLUDED

Cables	power (1.8m), USB (1.8m), HDMI (1.8m)
Guides	quick start guide, safety guide
Cable cover	yes
Remote control	yes (batteries included)

08 POWER MANAGEMENT

Power supply unit	internal
Power supply	AC 100 - 240V, 50/60Hz
Power usage	183W typical, 0.5W stand by, 0.3W off mode

09 SUSTAINABILITY

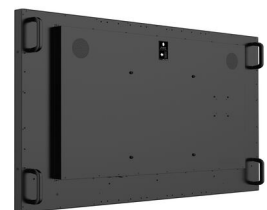
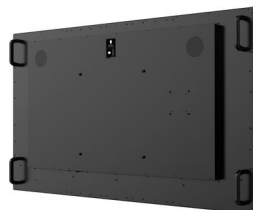
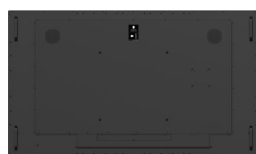
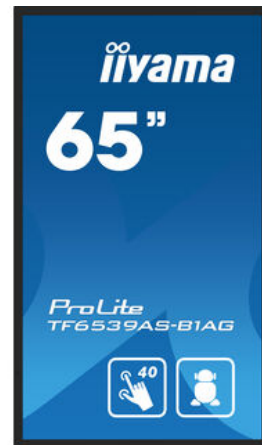
Regulations	CB, CE, TÜV-Bauart, EAC, RoHS support, ErP, WEEE, REACH, UKCA, cTUVus
Energy efficiency class (Regulation (EU) 2017/1369)	F
REACH SVHC	above 0.1%: Lead

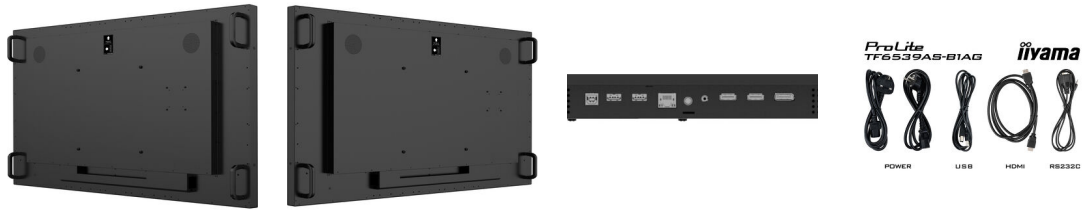
10 DIMENSIONS / WEIGHT

Product dimensions W x H x D	1495 x 870 x 66mm
Box dimensions W x H x D	1650 x 1010 x 194mm
Weight (without box)	53.7kg
Weight (with box)	65kg
EAN code	4948570123902

11 COMPATIBLE ACCESSORIES

Mounts / Stands / Brackets [OMK4-2](#), [MD-WLIFT2031-W1](#), [MD-CAR2031-B1](#)





All trademarks and registered trademarks acknowledged. E & O E. Specification subject to change without notice. All LCD's comply with ISO-9241-307:2008 in connection with pixel defects. © IYAMA CORPORATION. ALL RIGHTS RESERVED