

IFP INTERACTIVE DISPLAYS

INFORMATION

50" All-in-One PCAP Interactive Display inspired by technology and designed for creative spaces and sharing



Enjoy an all-in-one interactive display that combines the best in PCAP Touchscreen technology, offering the versatility and freedom of Android OS, easily customized to your needs by installing applications directly to it. Offering a powerful, yet flexible user experience, fostering creative communication with the benefits of a secure and controllable Touchscreen.

The refined edge-to-edge glass design of the TF5039AS-B1AG lends itself for integration into a large variety of environments where polished design and functionality are needed, like Huddle spaces in the modern office space, Retail shops and Kiosks.

The on-board [iiSignage² CMS](#) (Content Management System) gives you total control of your messaging and advertising, remotely and safely. The [EShare App](#) enables you to bring effortless ideation and efficient collaboration in your enterprise or school. You can start sharing wireless easier than ever before.

For ease of integration, the TF5039AS-B1AG can be equipped with optional external mounting brackets ([OMK4-2](#)).



Android OS

Thanks to Android OS, you can easily customize the display to your needs by installing applications directly to it.

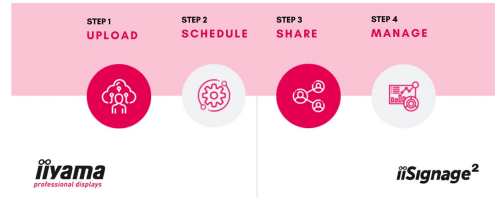


Retail Instalations

The interactive 4K Touchscreens are the key for immersive interactive experiences for spatial retail design. Allow customers to explore your website right there and then or engage with a range of creative or experiential applications you want to host. The flexibility of either landscape or portrait modes with 24/7 Operation, built-in Android and MediaPlayer make this SERIES displays one of the most adaptable Touchscreens solutions around.

4 SIMPLE STEPS

TO REACH YOUR AUDIENCE



iiSignage²

iiSignage² is our digital signage content management platform to easily show and control your content and to manage your displays in a secure way. The Content Management System (CMS) gives you total control of your messaging and advertising remotely and safely.



Huddle Spaces

Turn these small meeting rooms into neat Collaboration spaces by employing the embedded applications like Android OS, EShare and Whiteboard, a selection of intuitive and practical tools installed on our PCAP interactive Touchscreens. With Android OS you can easily customize the display by installing applications directly to it. With the EShare app you can share, stream and edit content from any device directly on screen and transform your team meetings into an easy, fast and seamless interactive session.

SPECIFICATION

01 DISPLAY CHARACTERISTICS

Design	Edge to edge glass, Open Frame
Diagonal	49.5", 125.7cm
Panel	VA, AG coated glass, matte finish, haze 25%
Native resolution	3840 x 2160 @60Hz (8.3 megapixel 4K UHD)
Aspect ratio	16:9
Panel brightness	500 cd/m ²
Brightness	435 cd/m ² with touch
Light transmittance	87%
Static contrast	5000:1
Response time (GTG)	9.5ms
Viewing zone	horizontal/vertical: 178°/178°, right/left: 89°/89°, up/down: 89°/89°
Colour support	1.07G (8 Bits+FRC) (72% NTSC)
Horizontal Sync	28 - 160kHz
Viewable area W x H	1095.8 x 616.4mm, 43.2 x 24.3"
Bezel width (sides, top, bottom)	24mm, 24mm, 24mm
Pixel pitch	0.285mm
Bezel colour and finish	black, matte

02 TOUCH

Touch technology	bonded PCAP
Touch points	40
Touch accuracy	+/- 2.5mm
Touch method	stylus, finger, glove (latex)
Touch interface	USB
Supported operating systems	All iiyama monitors are Plug & Play and compatible with Windows and Linux. For details regarding the supported OS for the touch models, please refer to the driver instruction file available in the downloads section.
Through-Glass	6mm
Palm rejection	yes

03 INTERFACES / CONNECTORS / CONTROLS

Digital signal input	HDMI x2 (2.0, max. 3840x2160 @60Hz) DisplayPort x1 (1.2, max. 3840x2160 @60Hz)
Monitor control input	RS-232c x1 (Get/Set Command) RJ45 (LAN) x1 (Control and Internet)
Audio output	Mini jack x1 Speakers 2 x 10W
HDCP	2.2

USB ports x3 OUT (2.0 x1 (up Type B), 2.0 x2 (Type A))

04 FEATURES

Integrated software	Android 11 OS, iiSignage ² , EShare, FailOver
Hardware	CPU: A73*4+A53*4, GPU: G52 MP8, RAM: 4GB, ROM: 32GB
Extra	handles, Touch Through-Glass
Kiosk mode	yes
Max. non-stop operating time	24/7
Anti image retention	yes
Glass thickness	3mm
Glass hardness	3H
60950 Ball drop test	yes
Water and dust protection	IP54 (front)
Housing (bezel)	metal
OSD key lock	yes
Remote control lock	yes

05 GENERAL

OSD languages	EN, DE, FR, ES, IT, RU, CZ, NL, PL, SV, FI, DA, NB
Control buttons	Power
User controls	picture (brightness, contrast, sharpness, back level, tint, colour, noise reduction, gamma selection, low blue light, colour temp., colour control, overscan, picture reset), screen (zoom mode, custom zoom, screen reset), audio (balance, treble, bass, volume, audio out (line out), max. volume, min. volume, mute, audio reset, audio out sync, speaker setting), configuration 1 (Android launcher, switch on state, Touch lock, Touch mode, mouse mode, panel saving, RS232 routing, boot on source, WOL, conf.1 reset, factory reset), configuration 2 (OSD timeout, OSD H position, OSD V position, system rotation, info OSD, logo and animation, logo setting, animation setting, monitor ID, monitor info, HDMI version, conf. 2 reset), advanced options (kiosk mode, side bar, no signal image, motorized stand, IR control, power LED light, fan, off timer, schedule, HDMI with one wire, HDMI with one wire off, failover, language, OSD transparency, power saving, advanced options reset)
Plug&Play	DDC2B

06 MECHANICAL

Orientation	landscape, portrait, face-up
VESA mounting	400 x 400mm
Mini PC mount	VESA 100 x 100, NUC INTEL
Operation temperature range	0°C - 40°C
Storage temperature range	- 20°C - 60°C
MTBF	50000 hours (excluding backlight)

07 ACCESSORIES INCLUDED

Cables	power (1.8m), USB (1.8m), HDMI (1.8m), DP (1.8m)
Guides	quick start guide, safety guide
Cable cover	yes
Remote control	yes (batteries included)

08 POWER MANAGEMENT

Power supply unit	internal
Power supply	AC 100 - 240V, 50/60Hz
Power usage	137W typical, 0.5W stand by, 0.3W off mode

09 SUSTAINABILITY

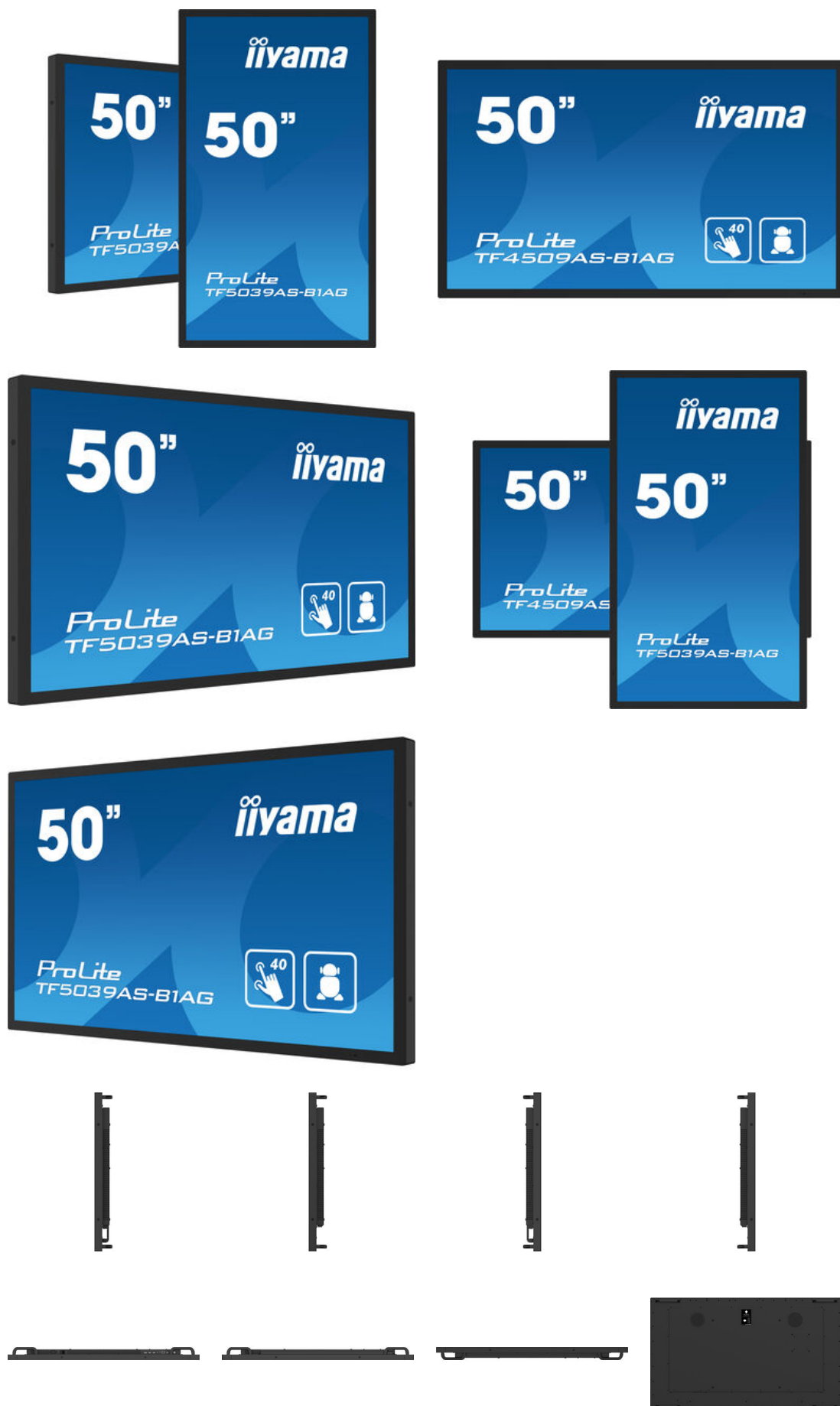
Regulations	CB, CE, TÜV-Bauart, EAC, RoHS support, ErP, WEEE, REACH (UKCA, cTUVus)
Energy efficiency class (Regulation (EU) 2017/1369)	F
REACH SVHC	above 0.1%: Lead

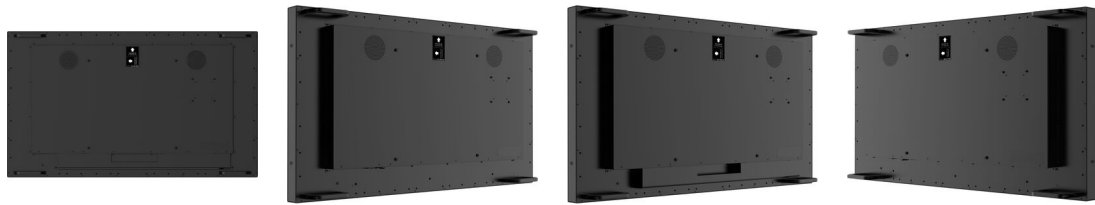
10 DIMENSIONS / WEIGHT

Product dimensions W x H x D	1149.4 x 670 x 64mm
Box dimensions W x H x D	1297 x 798 x 174mm
Weight (without box)	28.6kg
Weight (with box)	35.9kg
EAN code	4948570123889

11 COMPATIBLE ACCESSORIES

**Mounts / Stands /
Brackets** [OMK4-2](#), [MD-WLIFT2031-W1](#), [MD-CAR2031-B1](#)





All trademarks and registered trademarks acknowledged. E & O E. Specification subject to change without notice. All LCD's comply with ISO-9241-307:2008 in connection with pixel defects. © **Iiyama Corporation. All Rights Reserved**