

BSI-Certified Refurbished HP EliteBook 840 G5 i7 Gen 8

HP-EB840G5I7-16-256W

CORE SPECIFICATIONS

| | |
|------------------|---|
| Screen Size | 14" |
| Standard Display | 1920x1080 |
| Processors | Intel Core i7 |
| Graphics Card | Intel UHD Graphics 620 |
| RAM Options | 4 / 8 / 16 GB |
| Memory Type | DDR4 |
| Drive Options | 120 / 256GB / 512GB / 1TB SSD |
| OS Installed | Windows 10 Pro |
| Warranty | 2 years return to base (RTB) Upgradable to 3 years |

PORTS

| | |
|---------|-----|
| TYPE-C | 1 |
| USB 3.0 | 2 |
| HDMI | Yes |
| RJ-45 | Yes |

SECURITY

| | |
|---------------|---------|
| Security Chip | TPM 2.0 |
|---------------|---------|

NETWORK

| | |
|------|---|
| WIFI | Intel Dual Band Wireless--AC 8260 802.11a/b/g/n/ac |
|------|---|

HARDWARE

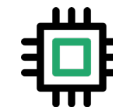
| | |
|--------------------------|--------------------------------|
| Keyboard reprinted | Any language Please enquire |
| Camera (resolution) | 720p HD camera |
| Weight | 1480 g |
| Dimensions (W x D x H) | 326mm x 234mm x 17.9mm |
| Speaker (stereo or mono) | 2 |

SUSTAINABILITY

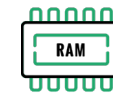
| | |
|---------------------------------|---|
| Average Energy Consumption p.a | 28.8 kWh |
| CO2 prevented by not buying new | 290kg of CO2e |
| Carbon offsetting | A tree planted for every unit sold (70-100KG CO2eq) |

BSI-CERTIFIED QUALITY

| | |
|-----------------|----------------------|
| BSI Refurbished | BS 8887 standard |
| Quality Process | ISO 9001 & ISO 14001 |



Core i7 8th Gen



16 GB RAM



256GB SSD



14" - 1920 x 1080



Windows 10 Pro installed

*Image accuracy is not guaranteed