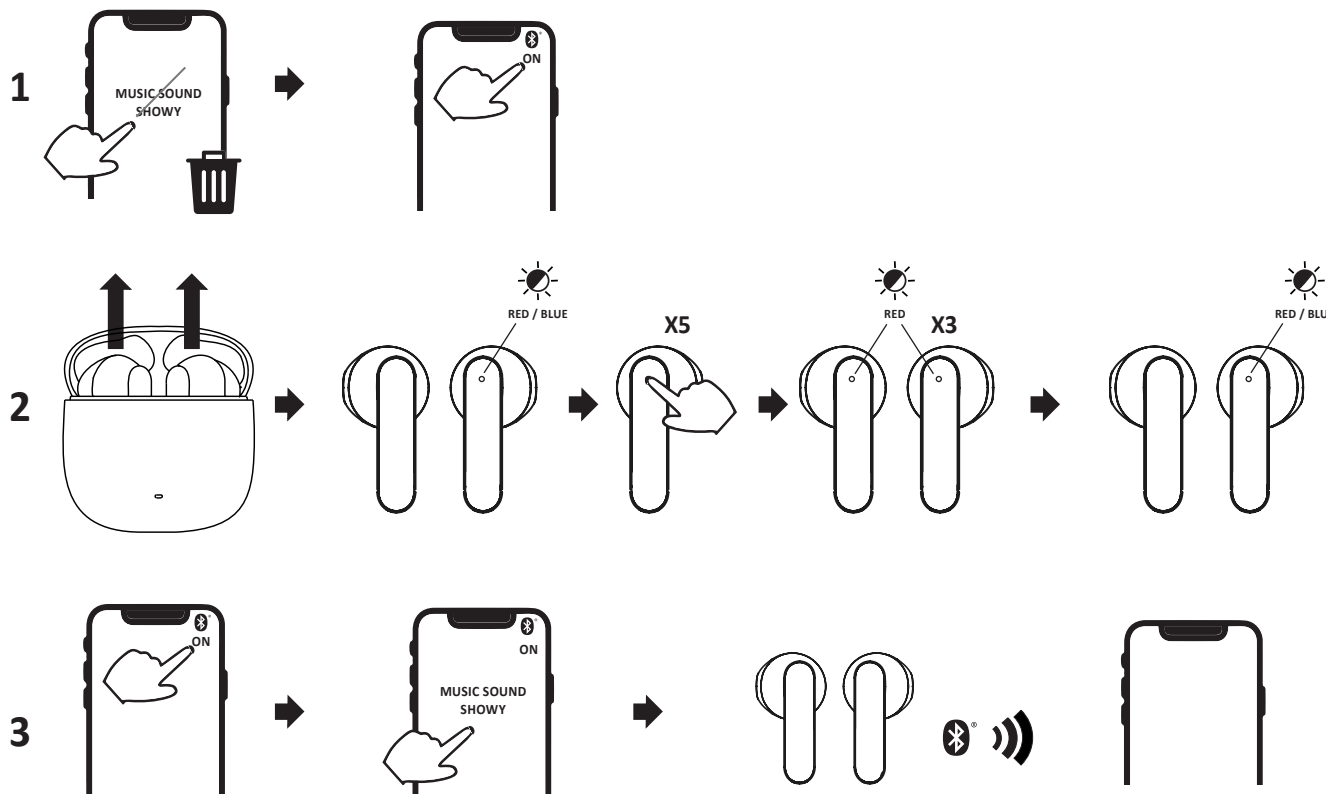
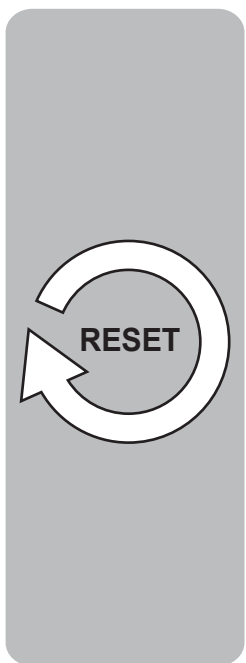
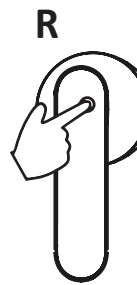
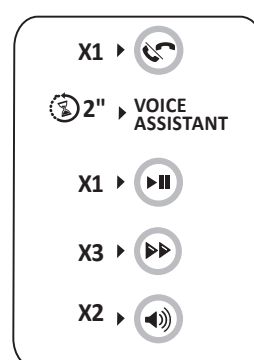
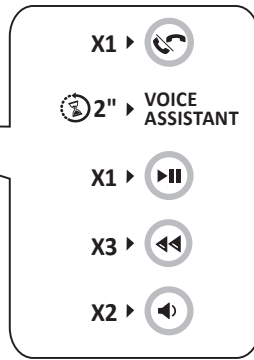
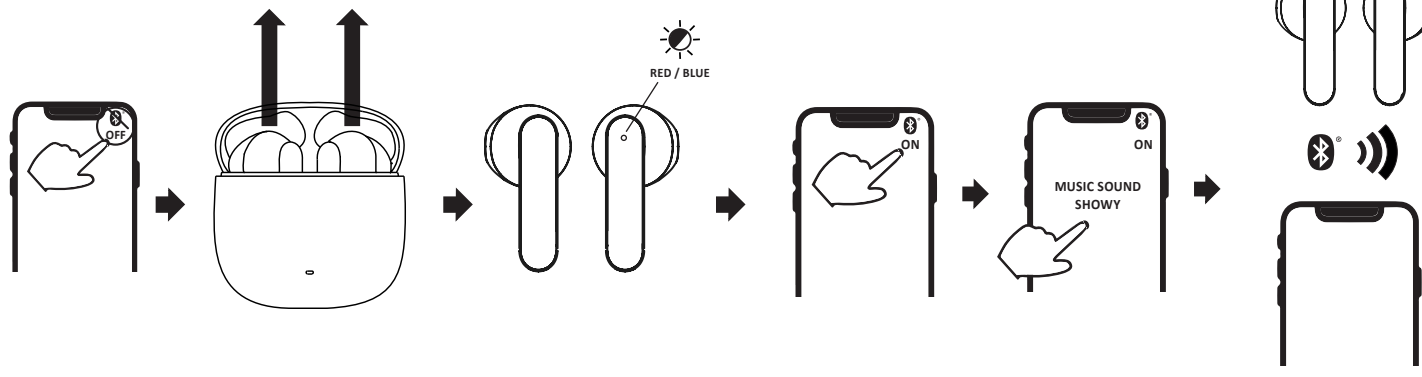
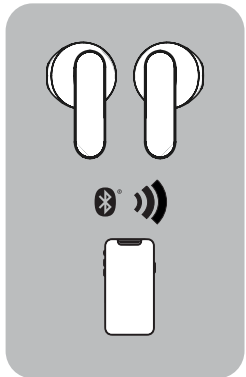
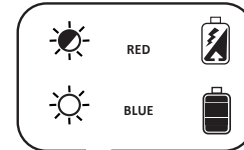
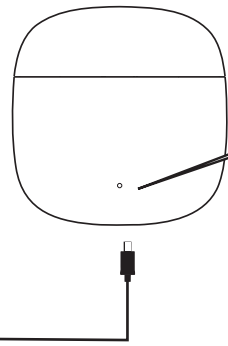
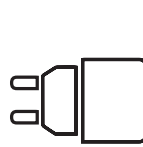
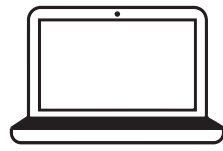
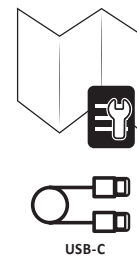
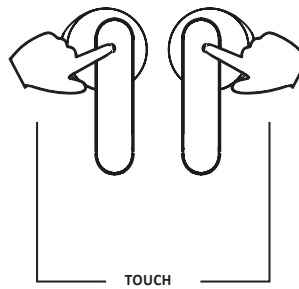
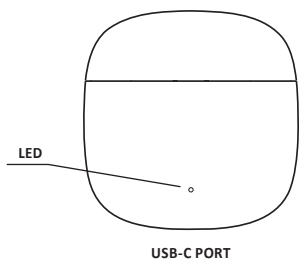
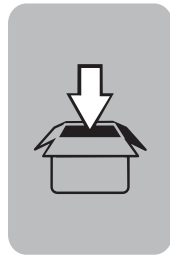


BTMSTWSCAPSULE241
BTMSTWSCAPSULE242
BTMSTWSCAPSULE243
BTMSTWSCAPSULE244
BTMSTWSCAPSULE245
BTMSTWSCAPSULE246
BTMSTWSAMZ1
BTMSTWSAMZ2

SHOWY



EN - Technical specifications:

Bluetooth® / version: 5.3
Supported profiles: Headset - Handsfree - A2DP - AVRCP
Range / metres: 10
Bluetooth® Frequency Range / Mhz: 2402-2480
Battery Voltage / Volt: 3.7
Battery capacity / mAh: 30 X 2
Charging Case Battery Capacity / mAh: 300
USB-C port Voltage (V) / Volt: 5
USB-C port current (A) / Ampere: 0.2
Maximum EIRP: +8dbm
Talk Time / hours/ approx.: 4
Play Time / hours/ approx.: 4
Earphone charging / hours/ approx.: 1.5
Charging Case / hours/ approx.: 2
Weight / grams: 36

IT - Specifiche tecniche:

Bluetooth® / versione: 5.3
Profili supportati: Headset - Handsfree - A2DP - AVRCP
Portata / metri: 10
Bluetooth® Frequenza Range / Mhz: 2402-2480
Batteria Voltage / Volt: 3.7
Batteria Capacità / mAh: 30 X 2
Charging Case Battery Capacity / mAh: 300
USB-C port Voltage (V) / Volt: 5
USB-C port current (A) / Ampere: 0.2
Maximum EIRP: +8dbm
Standby Time / ore-circa: 4
Play Time / ore-circa: 4
Ricarica auricolari / ore-circa: 1.5
Ricarica Charging Case / ore-circa: 2
Peso / grammi: 36

FR - Caractéristiques techniques:

Bluetooth® / version: 5.3
Profils supportés: Headset - Handsfree - A2DP - AVRCP
Portée / mètres: 10
Bluetooth® Gamme de fréquences / Mhz: 2402-2480
Tension de la batterie / Volt: 3.7
Capacité de la batterie / mAh: 30 X 2
Capacité de la batterie du Charging Case / mAh: 300
Tension du port USB-C (V) / Volt: 5
Courant du port USB-C (A) / Ampère: 0.2
PIRE max: +8dbm
Autonomie en conversation / heures (environ): 4
Autonomie en lecture / heures (environ): 4
Recharge des écouteurs / heures (environ): 1.5
Recharge du Charging Case / heures (environ): 2
Poids / grammes: 36

DE - Technische Daten:

Bluetooth® / Version: 5.3
Unterstützte Profile: Headset - Handsfree - A2DP - AVRCP
Reichweite / Meter: 10
Bluetooth®-Frequenzbereich / Mhz: 2402-2480
Akkuspannung / Volt: 3.7
Akkukapazität / mAh: 30 X 2
Charging Case Akkukapazität / mAh: 300
USB-C-Anschluss Spannung (V) / Volt: 5
USB-C-Anschluss Strom (A) / Ampere: 0.2
Maximum EIRP: +8dbm
Gesprächszeit / Stunden ca.: 4
Musikwiedergabezeit / Stunden ca.: 4
Aufladen Headset / Stunden ca.: 1.5
Aufladen Charging Case / Stunden ca.: 2
Gewicht / Gramm: 36

ES - Especificaciones técnicas:

Bluetooth® (versión): 5.3
Perfiles admitidos: Headset - Handsfree - A2DP - AVRCP
Alcance (metros): 10
Rango de frecuencia Bluetooth® (MHz): 2402-2480
Voltaje de la batería (volts): 3.7
Capacidad de la batería (mAh): 30 X 2
Capacidad de la batería del Charging Case (mAh): 300
Voltaje del puerto USB-C (volts): 5
Corriente del puerto USB-C (amperios): 0.2
Potencia isotrópica radiada equivalente máxima (dBm): +8dbm
Tiempo de conversación (horas aprox.): 4
Tiempo de reproducción (horas aprox.): 4
Recarga de los auriculares (horas aprox.): 1.5
Recarga del Charging Case (horas aprox.): 2
Peso (gramos): 36

TR - Teknik özellikler:

Bluetooth® / sürümü: 5.3
Desteklenen profiller: Headset - Handsfree - A2DP - AVRCP
Kapsama alanı / metre: 10
Bluetooth® Frekans Aralığı / Mhz: 2402-2480
Pil Voltajı / Volt: 3.7
Pil Kapasitesi / mAh: 30 X 2
Charging Case Pil Kapasitesi / mAh: 300
USB-C port Gerilimi (V) / Volt: 5
USB-C port akımı (A) / Amper: 0.2
Maksimum EIRP: +8dbm
Konuşma Süresi / saat-yaklaşık: 4
Çalma Süresi / saat-yaklaşık: 4
Kulak içi kulaklıkların yeniden şarj edilmesi / saat-yaklaşık: 1.5
Charging Case Yeniden Şarj Edilmesi / saat-yaklaşık: 2
Ağırlık / gram: 36

NL - Technische kenmerken:

Bluetooth® / versie: 5.3
Ondersteunde profielen: Headset - Handsfree - A2DP - AVRCP
Bereik / meter: 10
Bluetooth® Frequentiebereik / Mhz: 2402-2480
Batterijspanning / Volt: 3.7
Batterijcapaciteit / mAh: 30 X 2
Batterijcapaciteit oplaadcase / Volt: 300
Spanning USB-C-poort (V) / Volt: 5
Stroomsterkte USB-C-poort (A) / Ampère: 0.2
Maximum EIRP: +8dbm
Tijdsduur in gesprek / uur-circa: 4
Afspeeltijd / uur-circa: 4
Oplaadtijd headset / uur-circa: 1.5
Oplaadtijd oplaadcase / uur-circa: 2
Gewicht / gram: 36

FI - Tekniset tiedot:

Bluetooth® / versio: 5.3
Tuetut profiilit: Headset - Handsfree - A2DP - AVRCP
Kantavuus / metrit: 10
Bluetooth® taajuusalue / Mhz: 2402-2480
Akun jännite / Voltti: 3.7
Akun kapasiteetti / mAh: 30 X 2
Charging Case -latausketon akun kapasiteetti / mAh: 300
USB-C -portin jännite (V) / Voltti: 5
USB-C -portin virta (A) / Ampeeri: 0.2
Maksimi EIRP: +8dbm
Puhe aika / tuntia-noin: 4
Musiiikuunteluaika / tuntia-noin: 4
Kuulokkeiden lataaminen / tuntia-noin: 1.5
Charging Case-latausketon lataaminen / tuntia-noin: 2
Paino / grammaa: 36

SV - Tekniska specifikationer:

Bluetooth® / version: 5.3
Profiler som stöds: Headset - Handsfree - A2DP - AVRCP
Räckvidd / meter: 10
Bluetooth® frekvensområde / Mhz: 2402-2480
Batterispanning / Volt: 3.7
Batterikapacitet / mAh: 30 X 2
Batterikapacitet laddningsfodral / mAh: 300
USB-C-portens spänning (V) / Volt: 5
USB-C-port ström (A) / Ampere: 0.2
Maximal EIRP: +8dbm
Samtalstid / timmar cirka: 4
Speltid / timmar cirka: 4
Laddning av hörlurar / timmar cirka: 1.5
Laddning av laddningsfodral / timmar cirka: 2
Vikt / gram: 36

DA - Tekniske data:

Bluetooth® / version: 5.3
Understøttede profiler: Headset - Handsfree - A2DP - AVRCP
Rækkevidde / meter: 10
Bluetooth® frekvensområde / Mhz: 2402-2480
Batterispanning / Volt: 3.7
Batterikapacitet / mAh: 30 X 2
Batterikapacitet for Charging Case / mAh: 300
USB-C-portens spänning (V) / Volt: 5
USB-C-portens strøm (A) / Ampere: 0.2
Maksimum EIRP: +8dbm
Taletid / timer-cirka: 4
Afspilningstid / timer-cirka: 4
Opladning af høretelefoner / timer-cirka: 1.5
Opladning af Charging Case / timer-cirka: 2
Vægt / gram: 36

