



SELPHY QX20

COMPACT PHOTO PRINTER



Advanced User Guide

EN

Contents

Introduction.	3
Printer and Included Accessories.	4
Manuals and Software.	5
About This Guide.	6
Safety Instructions.	7
Part Names.	8
Preparations and Printing.	10
Charging the Battery.	11
Installing SELPHY Photo Layout.	12
Preparing the Printer and Printing.	13
Printing Precautions.	20
Reference.	21
Troubleshooting.	22
Storing Prints.	28
After Printing.	29
Handling and Maintenance.	30
Security.	31
Before Repair, Disposal, or Transfer of Ownership.	32
Specifications.	33
Trademarks and Licensing.	36

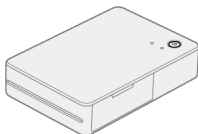
Introduction

- Read this guide carefully to ensure correct use.
- Contents subject to change without notice.
- Illustrations in this guide may differ slightly from the actual equipment.
- The above items notwithstanding, Canon cannot be held liable for any loss arising from use of the product or software.
- Images printed with this product are to be used for personal enjoyment. Unauthorized printing of copyrighted material is prohibited.

- [Printer and Included Accessories](#)
- [Manuals and Software](#)
- [About This Guide](#)
- [Safety Instructions](#)
- [Part Names](#)

Printer and Included Accessories

Before use, make sure the following items are included in the package. If anything is missing, contact your dealer.



SELPHY printer



Charging cable

- Printed matter is also included.
- Purchase a Color Ink / Label Set separately (XC-20L, XS-20L).
- The included charging cable is only for charging. It is not used for communication.

Manuals and Software

- **Instruction Manual (included with the printer)**

Read this manual before use.

- **Advanced User Guide**

Complete instructions are provided in this Advanced User Guide.

For the latest Advanced User Guide, refer to the following website.

<https://cam.start.canon/P002/>



- **SELPHY Photo Layout**

The mobile app SELPHY Photo Layout can be downloaded from the following website:

<https://cam.start.canon/spl/>






About This Guide

[Icons in This Guide](#)

- In this guide, the product is referred to as “SELPHY” or “the printer.”
- Instructions in this guide apply to the printer under default settings.
- For convenience, smartphones and tablets are collectively referred to as “smartphones.”
- The mobile app SELPHY Photo Layout is referred to as “the app.”

Icons in This Guide

	Links to pages with related topics.
	Warnings to prevent printing problems.
	Supplemental information.

Safety Instructions

Be sure to read these instructions in order to operate the product safely.
Follow these instructions to prevent injury or harm to the operator of the product or others.

WARNING

Denotes the risk of serious injury or death.

- Use only power sources specified in this instruction manual for use with the product.
- Do not disassemble or modify the product.
- Do not expose the product to strong shocks or vibration.
- Do not touch any exposed internal parts.
- Stop using the product in any case of unusual circumstances such as the presence of smoke or a strange smell.
- Do not use organic solvents such as alcohol, benzene or paint thinner to clean the product.
- Do not get the product wet. Do not insert foreign objects or liquids into the product.
- Do not use the product where flammable gases may be present.

This may cause electric shock, explosion or fire.

- Do not touch the product connected to a power outlet during lightning storms.

This may cause electric shock.

- Periodically remove any dust buildup from the power plug and power outlet using a dry cloth.
- Do not plug in or unplug the product with wet hands.
- Do not use the product if the power plug is not fully inserted into the power outlet.
- Do not expose the power plug and terminals to dirt or let them come into contact with metallic pins or other metal objects.
- Do not place heavy objects on the power cord. Do not damage, break or modify the power cord.
- Do not wrap the product in cloth or other materials when in use or shortly after use when the product is still warm in temperature.
- Do not leave the product connected to a power source for long periods of time.
- Do not charge the product at temperatures outside the range of 5 – 40 °C (41 – 104 °F).

This may cause electric shock, explosion or fire.

- Follow any indications to turn off the product in places where its use is forbidden.

Not doing so may cause other equipment to malfunction due to the effect of electromagnetic waves and even result in accidents.

CAUTION

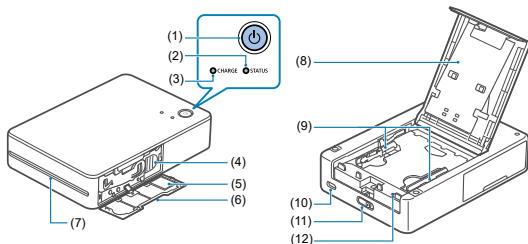
Follow the cautions below. Otherwise physical injury or property damage may result.

- Do not touch any parts inside the product.

This may cause injury.

Part Names

Lamp Display



(1) Power button

(2) STATUS lamp

(3) CHARGE lamp

(4) Eject lever

(5) QR code label

(6) Ink cassette compartment cover

(7) Delivery outlet

(8) Paper compartment cover

(9) Paper guides

(10) Charging terminal

(11) Open lever

(12) Forced shutdown switch

Lamp Display

STATUS Lamp	CHARGE Lamp	Status
Off	Off	Power off (not charging)
	Blinks once in green	Power off (charging: battery level low)
	Blinks twice in green	Power off (charging: battery level medium)
	Blinks three times in green	Power off (charging: battery level high)
	Lit in green	Power off (fully charged)* ¹
Blinks slowly in white	Off	Printer starting up
Blinks in white	Off	Busy
Blinks quickly in white	Off	Remove the printout.
Lit in white	Off	Ready to print (not charging)* ²
	Blinks in green	Ready to print (not charging: battery level low)
	Blinks once in green	Ready to print (charging: battery level low)
	Blinks twice in green	Ready to print (charging: battery level medium)
	Blinks three times in green	Ready to print (charging: battery level high)
	Lit in green	Ready to print (fully charged)
Blinks slowly in red	Blinks slowly in green	Charging paused. Outside of operating temperature range.
Blinks in red	Off	Error. Check the app for messages.
	Blinks in green	Battery level too low to print. Charge the battery.
Blinks quickly in red	Off	Error. Restart the printer.
	Blinks quickly in green	Battery error

* 1: The CHARGE lamp will turn off after a while.

* 2: You can check the battery level by pressing the power button when the printer is ready to print (not charging).

- CHARGE lamp blinks once:
Battery level low. Charge soon.
- CHARGE lamp blinks twice:
Battery level low, but printing is still possible.
- CHARGE lamp blinks three times:
Battery level is sufficient.

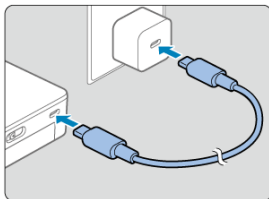
Preparations and Printing

This chapter describes initial printer preparations and how to print.

- [Charging the Battery](#)
- [Installing SELPHY Photo Layout](#)
- [Preparing the Printer and Printing](#)
- [Printing Precautions](#)

Charging the Battery

1. Use the included charging cable to connect the printer to a USB AC adapter.



- The CHARGE lamp starts to blink in green, and charging begins. Charging is complete when the lamp remains lit in green.



Note

- Use of an optional USB Power Adapter PD-E2 or PD-E1 is recommended for charging and powering the printer. You can also use commercially available products.
- For charging, use a battery charger with a rated output of at least DC 5.0 V, 1.5 A. Charging at room temperature takes approx. 80 min. Charging time varies greatly depending on ambient temperature and remaining capacity.

Installing SELPHY Photo Layout

This product is designed for printing via the mobile app SELPHY Photo Layout.

1. Download and install the latest version of SELPHY Photo Layout ().

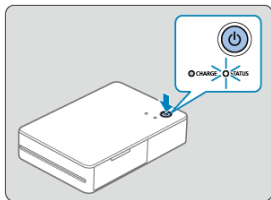
2. Start SELPHY Photo Layout.

- Turn on location services on the smartphone.
- Turn off power-saving mode and other functions that reduce smartphone battery consumption.
- Follow the instructions displayed.

Preparing the Printer and Printing

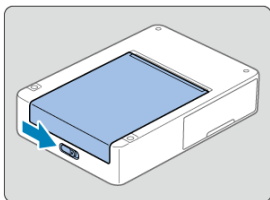
Follow these steps to load the paper and the ink cassettes in the printer and print.

1. Turn the printer on.

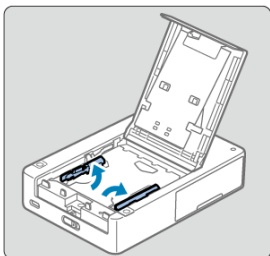


- Hold down the power button until the STATUS lamp starts blinking in white. Wait until the lamp remains lit.

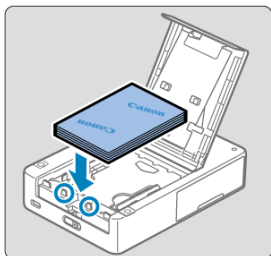
2. Load paper.



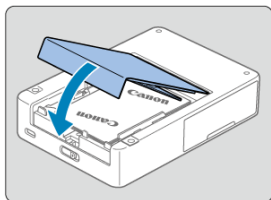
- Slide the open lever to release the lock, and open the paper compartment cover.



- Raise the paper guides.
- Do not raise the paper guides when loading square format paper.

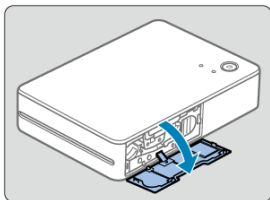


- Load the paper (up to 10 sheets) with the printing surface (without the Canon logo) face-down, being careful not to touch the printing surface.
- Align the paper with the circled parts, not against the back of the compartment.

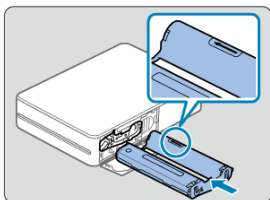


- Close the paper compartment cover.

3. Load the ink cassette.

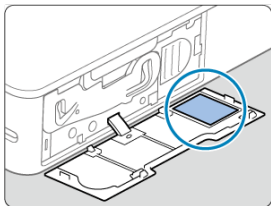


- Open the ink cassette compartment cover.

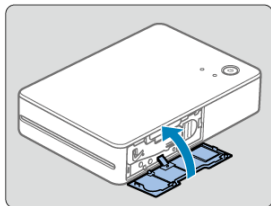


- With the new ink cassette correctly oriented, insert it in the printer until it clicks into place.
- Use a suitable ink cassette for the size of paper loaded.

4. Scan the QR code to connect to the printer and register it.

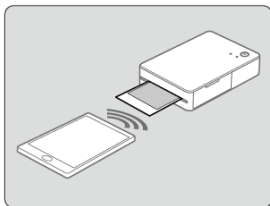


- Following the SELPHY Photo Layout instructions, scan the QR code to connect to the printer and register it.

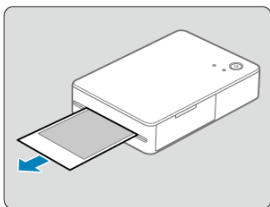


- Close the ink cassette compartment cover.

5. Print.

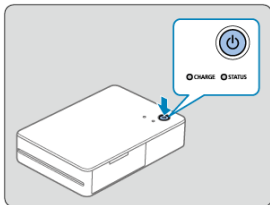


- Print from SELPHY Photo Layout.



- Remove the printouts after printing is finished.

6. Turn the printer off.



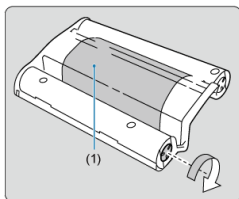
- After use, hold down the power button until the STATUS lamp turns off.

Caution

- Place the printer on a table or other flat, stable surface. Never place the printer on an unstable or tilted surface.
- Leave space for printouts by the delivery outlet.
- The QR code label will be required if you need to register the printer again—for example, if you switch smartphones. Keep a record by taking a photo of it with a smartphone camera or other device.

Note

- If the ink sheet is loose, turn the sprocket gently to tighten it. Do not touch the ink sheet (1).



Printing Precautions

Take the following precautions to avoid failure or malfunction.

- When loading paper, keep the printing surface (without Canon logos) face-down and avoid touching it.
- Do not use paper that has started to peel away from the backing or that has portions peeled off.
- Do not use paper that has already been printed or written on.
- The paper will emerge from the printer several times during printing, but do not pull on it until a removal message is displayed on your smartphone.
- Do not interrupt communication until printing is finished. If communication is interrupted, printing may be incomplete.
- Do not open the ink cassette or paper compartment cover while the printer is operating.
- The printer may produce poor results if the ambient temperature is too high or low. If so, try printing again in a location where the temperature is 15–35°C (59–95°F).



Note









- The printer automatically turns off if left idle for approx. 10 min. To resume printing, press the power button.

Reference

This chapter answers frequently asked questions and provides technical information about SELPHY.

- [Troubleshooting](#)
- [Storing Prints](#)
- [After Printing](#)
- [Handling and Maintenance](#)
- [Security](#)
- [Before Repair, Disposal, Lending, or Transfer of Ownership](#)
- [Specifications](#)
- [Trademarks and Licensing](#)



Troubleshooting

-  [Power](#)
-  [Charging](#)
-  [Printing](#)
-  [Paper](#)
-  [Wi-Fi](#)
-  [App](#)
-  [Error messages](#)
-  [App and printer updates](#)

Troubleshoot any printer issues as described in this section. If the problem persists after troubleshooting, contact your nearest customer support help desk.

Power

Cannot turn on the printer.

- Check the remaining battery level ().
- If connecting the printer to a power source does not charge the battery, press the forced shutdown switch () with a thin, pointed object and try charging again.

Charging

Battery cannot be charged.

- Charging is not possible during printing. Charge when the printer is ready to print or with the power turned off.
- Use a battery charger specified for the printer (🔌).
- If connecting the printer to a power source does not charge the battery, try reconnecting the charging cable. If the battery still will not charge, press the forced shutdown switch (🔌) with a thin, pointed object and confirm that charging has commenced.

Battery runs out of power quickly.

- Battery performance is reduced at low temperatures.
- Battery power may be consumed faster under some print settings.
- Battery power is consumed while the printer is waiting to print. To be able to print as much as possible before charging again, turn the printer off after printing.
- Battery level indicators on the printer and in the app are for reference only. The battery may run out of power quickly under some printing conditions. Charge the battery as soon as possible after use.

Charging error: STATUS lamp blinks slowly in red and CHARGE lamp blinks slowly in green.

- Although charging will stop if the printer temperature rises past a certain level, this does not indicate a problem. Disconnect the battery charger, turn off the printer, and wait for it to cool down. This charging error is more likely to occur during continuous printing or when the ambient or internal printer temperature is high.

Charging takes longer, or a charging error occurs (STATUS lamp blinks quickly in red and CHARGE lamp blinks quickly in green).

- Charging may take longer or a charging error may occur if the printer is not used over an extended period. If so, reconnect the charging cable and charge the printer again.
- Use a battery charger specified for the printer (🔌).
- If the problem persists, contact a customer support help desk.

Cannot print.

- Confirm that the printer is on (✔).
- Confirm that the paper and the ink cassette are loaded correctly (✔).
- Confirm that the ink sheet is taut (✔).
- Confirm that you are using paper designed especially for the printer (✔).
- Replace the ink cassette and replenish the paper as needed (✔).

Print quality is poor.

- Confirm that the ink sheet and paper are free of dirt or dust.
- Confirm that the inside of the printer is free of dust.
- Confirm that no condensation has formed on the printer.
- Confirm that the printer is away from sources of electromagnetic waves or strong magnetic fields.

Printed colors do not match the colors on the smartphone screen.

- Color is produced in different ways by the smartphone screen and the printer. Colors may also look different depending on screen color calibration and the brightness and color temperature of lighting in the screen viewing environment.

Printing takes too long.

- Although printing will be paused if the printer temperature rises past a certain level, this does not indicate a problem. Wait a while before printing, or turn off the printer and wait for it to cool down before you continue. Occasional pauses will cause printing to take longer than usual if you print continuously or use the printer in hot environments, or when the printer becomes hot internally.
- Pausing may be more frequent under certain print settings.

Cannot cancel printing.

- Even if you cancel printing in progress, the current print job will still be printed.
- Canceling a multi-sheet print job in progress will stop printing after the current sheet is printed.

Paper feed problems or frequent paper jams occur.

- Confirm that paper is loaded correctly (🔗).
- Confirm that the paper is not folded, peeling away from the backing, or previously printed on.
- Confirm that no more than 10 sheets are loaded.
- Confirm that you are using paper designed especially for the printer (🔗).
- The printer may produce poor results if the ambient temperature is too high or low. If so, try printing again in a location where the temperature is 15–35°C (59–95°F).

Cannot print the correct quantity (unused paper left after ink runs out).

- Some unused paper may remain if the ink runs out first, depending on how the printer is used.

Paper is not ejected.

- Any paper left sticking out of the front of the printer should be carefully pulled out. If you cannot remove the paper by gently pulling it out, never force it out. Turn the printer off and then on. Repeat until the paper is ejected. If you accidentally turn the printer off while printing, restart it and wait until the paper is ejected.
- If paper jams and cannot be removed, contact your dealer or a customer support help desk. Do not attempt to remove jammed paper by force, which may damage the printer.

“Connection has failed.” is displayed.

- Confirm that the printer is on (🔌).
- Turn on location services on the smartphone.
- To register a new printer in the app, tap [🖨️] in the upper left on the app home screen, then tap **[Register/reregister printer]**.
- Registration using the QR code will not be possible if you have changed the password by using **[Change the password]**. If so, register the printer manually.
- If you forgot the password after changing it, reset the printer settings as follows, then register the printer again in the app.
Turn the printer on. → Press and hold the power button for at least 1 sec., which will turn off the STATUS lamp. → Keep pressing the power button. → When the STATUS lamp starts blinking, release the power button.

Printing takes too long.

- Do not use the printer near sources of Wi-Fi signal interference, such as microwave ovens, Bluetooth devices, or other equipment operating on the 2.4 GHz band.
- Keep the printer near the smartphone, without objects between them.

QR code cannot be scanned.

- Confirm that the QR code is not obscured by shadows, and that you are scanning it straight-on.
- It may not be possible to scan the QR code well on some smartphones. If so, register the printer manually.


"This photo cannot be used." is displayed.

- If "This photo cannot be used." is displayed in the app, the image may be too large. Before you attempt printing again, try to make the image smaller by reducing or cropping it.

Error messages

- In case of printer problems, lamps on the printer are activated and a message is displayed on the smartphone. When error messages include troubleshooting tips, follow the instructions. If only an error message is displayed, follow the suggestions in "Troubleshooting." If the problem persists, contact a customer support help desk.
- If you will restart the printer, make sure the paper and the ink cassette are loaded correctly before you turn it on.

App and printer updates

- Always use the latest version of the app (.
- The printer firmware may need to be updated before you can print. This requires a sufficient battery level.
- Do not turn the printer off or press the forced shutdown switch during firmware updates.

Storing Prints

- When writing on prints, use an oil-based pen.
- To prevent discoloration, do not store prints where temperatures exceed 40°C (104°F), in humid or dusty places, or in direct sunlight.
- Do not apply adhesive tape to the printed surface, keep the surface away from vinyl or plastic desk mats, business card cases, and erasers, do not leave the surface pressed against other objects, and do not wipe with alcohol or volatile solvents, which may cause discoloration, fading, or color transfer.
- When storing prints in an album, choose an album with photo covers made of nylon, polypropylene, or cellophane.

Caution

- Color may change over time or depending on storage conditions. Canon cannot be held liable for discoloration.

After Printing

- Turn the printer off.
- Leave the paper and the ink cassette in the printer.
- Store the printer on a flat surface, away from sunlight and dust. Any dust that enters the printer may cause white banding on photos or malfunctioning.



CAUTION

- Store any unused paper or ink cassettes in their unopened packages, away from sunlight.

Handling and Maintenance

- Do not subject the printer to excessive force or vibration, which may damage it or cause paper jams.
- Do not expose the printer to insecticides or volatile substances. Additionally, do not store the printer in contact with rubber or vinyl products over extended periods, which may cause deformation of the casing.
- Avoid condensation on the printer, which may happen when moving it from cold to warm environments. Put the printer in a sealed plastic bag and allow it to adjust to the new temperature before removing the bag. If condensation forms, allow the printer to dry naturally at room temperature before using again.
- Wipe away any dirt with a soft, dry cloth.



Caution

- Never wipe the printer with detergent or organic solvents such as benzene or paint thinner.

Security

Because wireless LAN uses radio waves to transmit signals, security precautions more stringent than when using a LAN cable are required.

Keep the following points in mind when using wireless LAN.

- **Transmission monitoring**
Third parties with malicious intent may monitor wireless LAN transmissions and attempt to acquire the data you are sending.
- **Unauthorized network access**
Third parties with malicious intent may use the product illegally if they can view the information in the QR code.
You can change the network password from the mobile app SELPHY Photo Layout as needed.

Changing Wi-Fi security settings

You can change the printer security settings from a smartphone as follows. Normally there is no need to change these settings.

1. Turn the printer on.
 2. In the smartphone Wi-Fi settings, add the SELPHY network and join it.
SSID (network name): QX20-xxx
(xxx: last three letters or numbers below the QR code inside the printer ink cassette compartment cover)
Password: Nine letters or numbers below the QR code inside the printer ink cassette compartment cover
 3. Using the smartphone browser, access the following URL, download the certificate, and install it on the smartphone.
<http://192.168.0.1:8008/>
 4. Using the smartphone browser, access the following URL. On the **[Wi-Fi Security]** screen, change the security settings as needed.
<https://192.168.0.1/>
 5. Delete the SELPHY network added in step 2.
- Changing Wi-Fi security settings may prevent you from connecting, depending on the smartphone OS, software version, or other factors. If so, reset the printer settings (🔧).

Before Repair, Disposal, Lending, or Transfer of Ownership

Before transferring ownership, lending the product, disposing of it, or sending it for repair, do the following to reset the settings.

- Turn the printer on. → Press and hold the power button for at least 1 sec., which will turn off the STATUS lamp. → Keep pressing the power button. → When the STATUS lamp starts blinking, release the power button.

Specifications

Printing method

Printing method

Dye-sublimation thermal transfer

Printing resolution

287 × 287 dpi

Gradation

256 shades per color

Print speed (per sheet)

Approx. 40 sec. (at room temperature)

Number of printable sheets

Approx. 20 sheets (at room temperature, using a new, fully charged battery)

* Each printout must be removed when finished.

Paper feed capacity

10 sheets

Dimensions / weight

Dimensions

(W) × (H) × (D)	Approx. 102.2 × 32.9 × 145.8 mm (Approx. 4.02 × 1.30 × 5.74 in.)
-----------------	------------------------------------------------------------------

* Excluding protrusions

Weight

Approx. 455 g (Approx. 16.05 oz.)

* Excluding ink cassette and label

Operating environment

Operating temperature

5–40°C (41–104°F)

Operating humidity

20–80%

Power source

Battery charge

Rated input (voltage)	DC 5.0 V \pm 0.5 V
Rated input (current)	Max. 1.5 A
Charging time (at 23°C/ 73°F)	Approx. 80 min. <ul style="list-style-type: none">• Charge via charging cable• Takes approx. 4 hours if the battery is fully discharged, such as when initially charged or after extended storage

Wi-Fi

Specifications

IEEE 802.11b/g compliant

Frequency

2.4 GHz

Connection method

Direct connection*

- Simultaneous connections: 6 devices
- Can be paired with smartphones via a QR code

* Printer serves as a basic access point for device connections. Internet connectivity may not be available during direct connections, depending on the type of smartphone.

Channels

1–11 ch

Security

WPA3-Personal Transition Mode

SELPHY Photo Layout

Compatible version

SELPHY Photo Layout ver. 4.0.0 or later for iOS and Android

Color ink / label set

Ink cassette

	Colors	Overcoat
XS-20L	<ul style="list-style-type: none">• Yellow• Magenta• Cyan	Provided
XC-20L		

Label set

	Paper Specifications	Paper Size
XS-20L	Square format sticker paper	72.0 × 85.0 mm (2.84 × 3.35 in.)
XC-20L	Card-size sticker paper	54.0 × 85.0 mm (2.13 × 3.35 in.)

- All measurements based on Canon testing standards.
- Printer specifications and appearance are subject to change without notice.

Trademarks and Licensing

- Android is a trademark of Google LLC.
- QR Code is a trademark of Denso Wave Inc.
- Wi-Fi®, Wi-Fi Alliance®, WPA™, WPA2™, and WPA3™ are trademarks or registered trademarks of the Wi-Fi Alliance.
- USB Type-C™ and USB-C™ are trademarks of USB Implementers Forum.
- All other trademarks are the property of their respective owners.