

1. Disassembly Procedures:

Note:

This "Disassembly Procedures" is for EMEA only, not for other regions. Please note that Dell will deem warranty void if any disassembly is done on the monitors.

List of tools/equipment:

1. Philips-head screwdriver
2. Electric screwdriver
3. Soldering iron and absorber

S1 Turn off power.



S2 Unplug external cables (power cable and video cable) from the monitor.



Removing the monitor stand.

- a. Place the monitor on a soft cloth or cushion.
- b. Press and hold the stand-release button.
- c. Lift the stand up and away from the monitor.

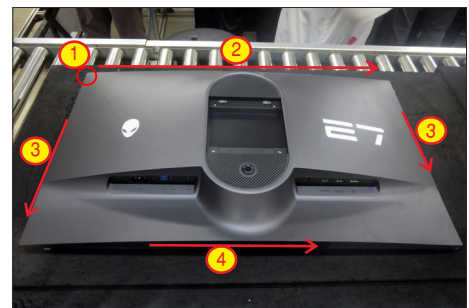
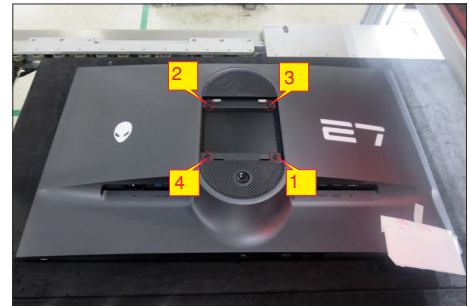


Loose the display back cover.

S4

a. Remove the 4 screws (M4x11).

a. Pull up the back cover by hand in the sequence of "1 -> 2 -> 3 -> 4" to loosen it from the panel.

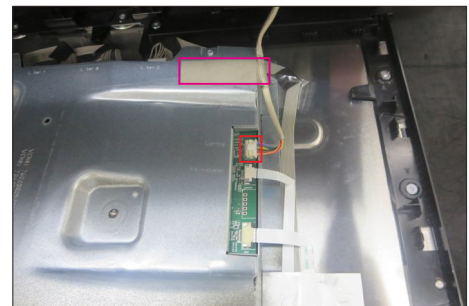


Remove the display back cover.

S5

a. Lift up the display back cover and disconnect the light bar cable.

b. Peel the tape and remove the rear cover.



Remove the light bar PCBA.

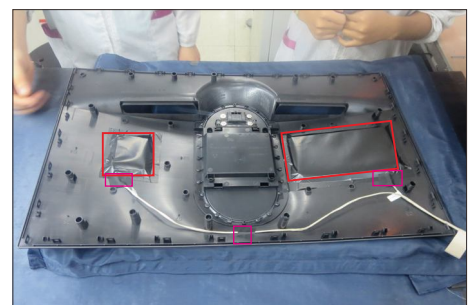
S6

a. Place the rear cover on a soft cloth or cushion.

b. Peel all the tape and mylar.

c. Release the two light bar from the hooks.

d. Remove the 4 screws (M2x3.8)

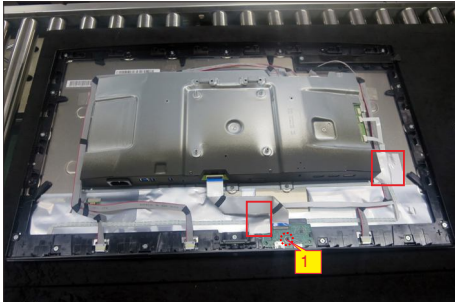




Remove the USB PCBA.

S7

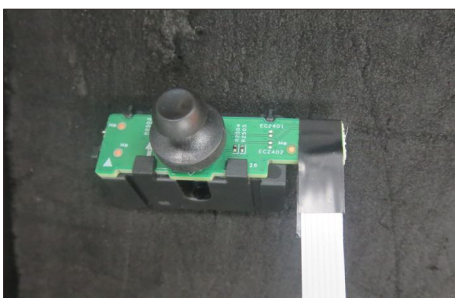
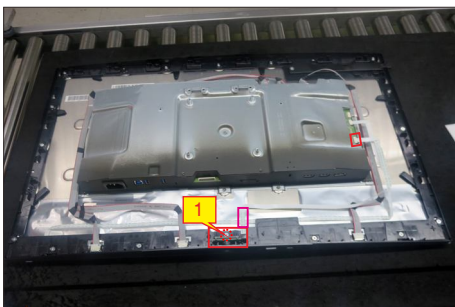
- Peel the aluminum foil.
- Remove 1 screw1 (M3x6).
- Pull out FFC cable from the connectors.



Remove the joystick board.

S8

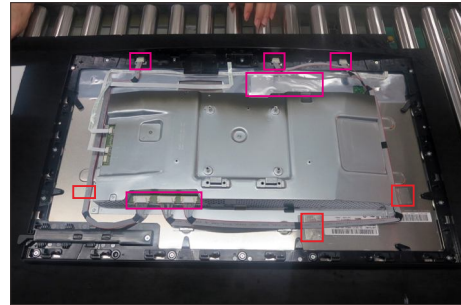
- Remove 1 screw (M3x6).
- Peel the tape.
- Pull out key cable from the connector.



Remove the lamp cable.

S9

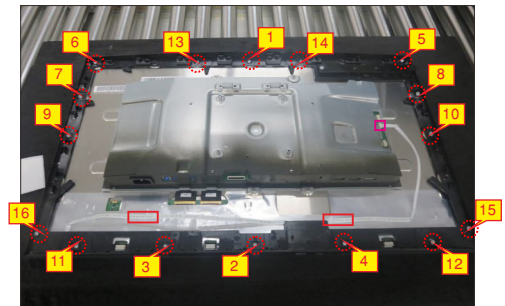
- Peel transparent tape and aluminum foil.
- Disconnect lamp cables from panel.



Remove middle frame.

S10

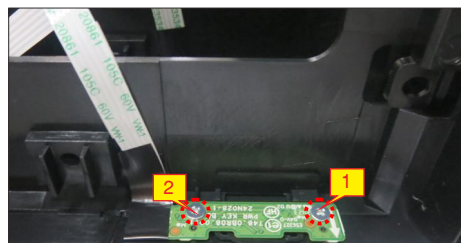
- Remove 16 screws (M3x5).
- Peel tape and disconnect the power key cable.



Remove power key board.

S11

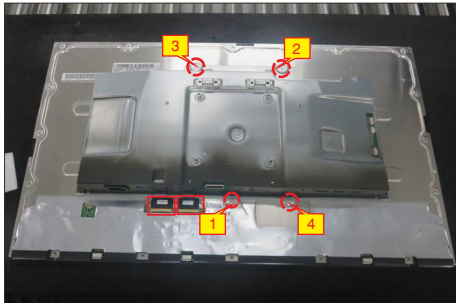
- Peel the mylar tape.
- Remove 2 screws (M2x2.4).
- Remove the power keypad from the front cover.



Remove chassis screw and Disconnect eDP cables.

S12

- Remove 4 screws (M3x4) that secure the main chassis.
- Open the latch.
- Disconnect the two eDP cables from panel.



Remove main chassis and display panel.

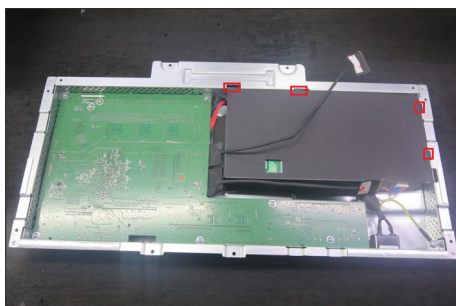
S13

- Lift up the main chassis and put it on a cushion.
- Lift up the display panel and put it on a cushion.



S14

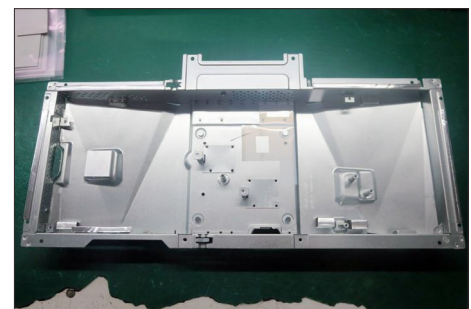
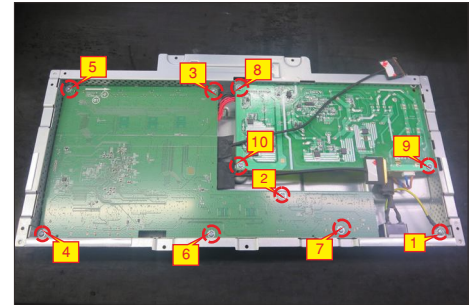
Remove the Mylar sheet.



Remove PCBA (interface board and power board).

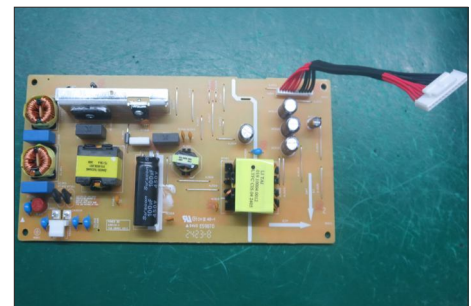
S15

- Remove 1 ground screw (M4x8).
- Remove 9 screws (M3x6).
- Disconnect all the cables.

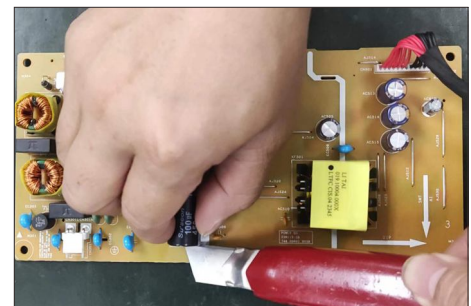


S16

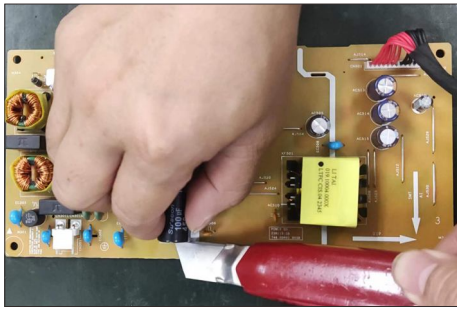
Remove electrolyte capacitors (red mark) from printed circuit board.



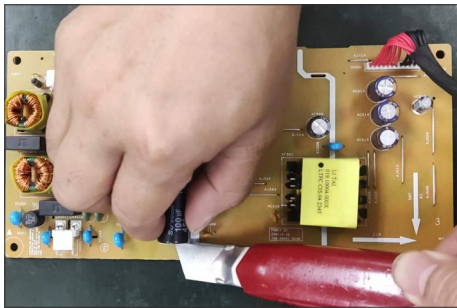
- S16-1 Carefully slide the knife under the capacitor and cut across the glue to detach the capacitor from the daughter board or system board or I/O board.



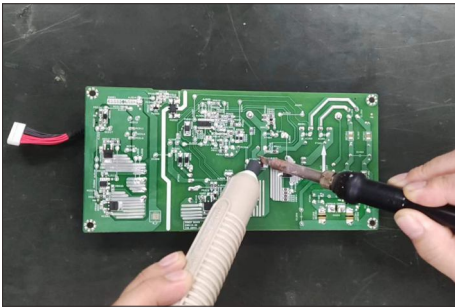
S16-2 Ensure cutting path within the glue, do not touch the bulk capacitor or the daughter board.



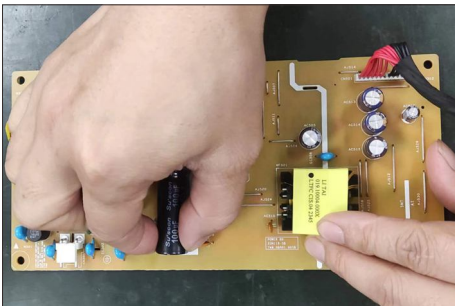
S16-3 Cut into the bottom of bulk cap. and pull it up carefully.



S16-4 Take out bulk cap. pin solder with soldering iron and absorber.



S16-5 Lift the bulk cap. up and away from the PCB.



2. Product material information:

The following substances, preparations, or components should be disposed of or recovered separately from other WEEE in compliance with Article 4 of EU Council Directive 75/442/EEC.

Capacitors or condensers (containing PCB/PCT)	Not used
Mercury containing components	Not used
Batteries	Not used
Printed circuit boards (with a surface greater than 10 square cm)	Product has printed circuit boards (with a surface greater than 10 square cm)
Component contain toner, ink and liquids	Not used
Plastic containing BFR	Not used
Component and waste contain asbestos	Not used
CRT	Not used
Component contain CFC, HCFC, HFC and HC	Not used
Gas discharge lamps	Not used
LCD display > 100 cm	Product has an LCD greater than 100 cm
External electric cable ²	Product has external cables ²
Component contain refractory ceramic fibers	Not used
Component contain radio-active substances	Not used
Electrolyte capacitors (height > 25mm, diameter > 25mm)	Product has electrolyte capacitors (height > 25mm, diameter > 25mm)