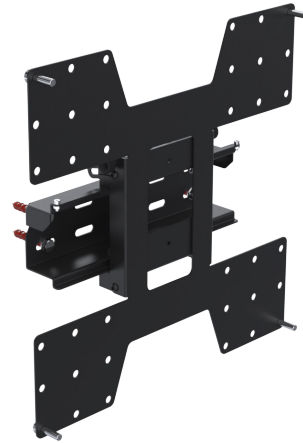


Tilting wall mount for screens up to 65" (VESA 200 to VESA 400)

Transform your space with our Universal Tilting Wall Mount for single screens up to 65". With adjustable tilt for the perfect viewing angles, it's easy to install and compatible with leading digital signage brands.

Features:

- Universal tilting Single screen wall mount for screens up to 65"
- Easy hook-on mounting of screen
- Supports VESA 200x200, 200x300, 200x400, 300x200, 300x300, 300x400, 400x200, 400x300 and 400x400
- Include fixing to secure screen (bottom)
- Quick release plunger can be added for easy installation and maintenance
- Tilt (degrees) Landscape: 0-15° for < 55", 0-10° for 55" and 0-5° for 65" screens
- Tilt (degrees) Portrait: 0-15° for < 43", 0-10° for 43" and 0-5° for 50" - 65" screens



Specifications

Colour Name	Black
Colour Type	Structured
Main material	Metal
Product Version	2.0
Enclosure Format	Single Sided
Max weight capacity (kg)	80
Mounting	VESA
Mounting Type	Wall
Screen size supported	32", 37", 42", 48", 50", 55", 60", 65"
VESA mounting standard	200 x 200 , 200 x 300 , 200 x 400 , 300 x 200 , 300 x 300 , 300 x 400 , 400 x 200 , 400 x 300 , 400 x 400
Unit Weight	3.55 kg
Units per Box	1
Box Weight	3.73 kg
Warranty	5 Years

Product Dimensions

Unit Depth	87 mm
Unit Height	420 mm
Unit Width	420 mm

Package Dimensions

Box Depth	435 mm
Box Height	90 mm
Box Width	435 mm