

VESA Top mount - 32

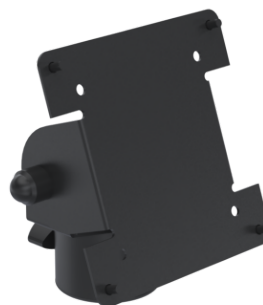
SPV106-FX-32



SP2 Top Mount Locking Connection Joint, VESA Plate 75/100 combined

Supports VESA 75 and VESA 100 mounting standards and common POS screens

5-year warranty



Product Specifications

Colour Name	White
Colour Type	Structured
Main material	Metal
Product Version	1.1
Height adjustable?	No
Screen size supported	11", 12", 13", 15", 17", 19", 21", 22", 24", 27"
Max weight capacity (kg)	10
Mounting	VESA
Screws included	No
Units per Box	1
Unit Weight	0.46 kg
Box Weight	0.54 kg
Warranty	5 Years

Product Dimensions

Unit Depth	79.8 mm
Unit Height	126.2 mm
Unit Weight	0.46 kg

Package Dimensions

Box Depth	150 mm
Box Height	135 mm
Box Width	115 mm



www.ergonomic.solutions