

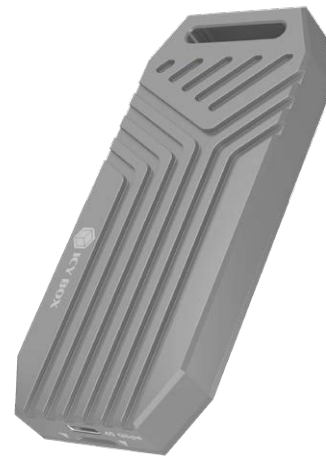


ICY BOX IB-1919M-C42

USB4[®] M.2 NVMe enclosure

Key features

- High-speed performance – USB4[®] enables lightning-fast data transfer rates of up to 40 Gbit/s, ideal for data-intensive applications and fast data exchange
- Robust aluminium enclosure – The M.2 enclosure made of high-quality aluminium ensures excellent heat dissipation and provides durable and stylish protection for the M.2 2280 NVMe SSD
- Compatibility – Supports a wide range of M.2 2280 PCIe NVMe SSDs. Always ready to use thanks to Plug & Play
- Easy installation – 100% toolless, user-friendly design for a quick and uncomplicated installation of the SSD
- Portable design – The slim and lightweight aluminium enclosure makes it easy to carry the SSD safely and conveniently, perfect for professionals and enthusiasts



Packing content

1x IB-1919M-C42, 1x USB-C cable, 1x Thermal pad,
1x Heat sink, 2x Rubber fixation, 1x Spring hook, 1x Manual

Technical data

Model	IB-1919M-C42
Article no.	61113
EAN code	4250078174479
Colour	Silver
Material	Aluminium
Interface to host computer	USB4 [®] Gen 3x2 Type-C [®]
Transfer rate	Up to 40 Gbit/s
UASP support	Yes
Length of cable	25 cm
Socket	M.2 M-Key
M.2 card size	22x 80 mm
M.2 interface	M.2 NVMe SSD

SSD capacity	Up to 8 TB
HotSwap	Yes
Plug & Play	Yes
Cooling	Passive
LED	Power and access
Chipset	ASM2464PD
Power supply	Bus-powered
Operating system	Windows [®] , macOS [®] , Linux [®]
System requirements	Intel(R) Core™ 12th-AMD&ZEN3-M2&MAC-OS 13.4 or later

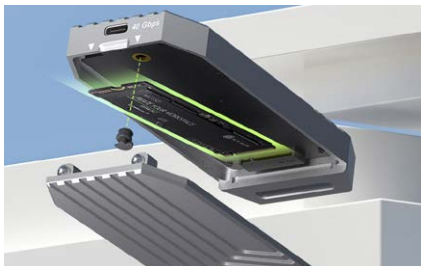


ICY BOX **IB-1919M-C42** USB4[®] M.2 NVMe enclosure



High-speed performance with USB4[®]

Harness the full power of USB4 technology with our IB-1919M-C42 M.2 NVMe enclosure, delivering unprecedented data transfer speeds of up to 40 Gbit/s. Whether you're transferring large multimedia files, editing high-resolution videos, or accessing complex data sets, USB4[®] ensures you can work with efficiency and speed, eliminating bottlenecks and optimising your workflow.



Toolless installation

Simplify your setup process with the IB-1919M-C42's innovative toolless design, allowing you to install your M.2 NVMe SSD quickly and securely without the need for additional tools. Just slide your SSD into place, secure it effortlessly, and connect the enclosure to your device—it's that simple. This user-friendly feature not only saves you time but also eliminates the hassle of dealing with small screws or intricate assembly steps, ensuring a seamless experience whether you're upgrading your storage or transferring data on the go.



Robust aluminium housing

Crafted from premium aluminum, the IB-1919M-C42 not only exudes durability but also serves as a robust shield for your M.2 2280 PCIe NVMe SSD. The aluminum housing not only protects your drive from physical damage but also acts as an efficient heat sink, dissipating heat effectively to maintain optimal operating temperatures even during prolonged usage. This ensures your SSD operates reliably and maintains peak performance over time, making it ideal for demanding professional environments and frequent travel.

Logistical data

Packing unit:	40 pcs. / carton
Total weight:	12.82 kg
Gross weight (with packing):	0.280 kg
Net weight:	0.125 kg

Dimension/carton:	470x370x278 mm
Dimension (with packing):	165x110x50 mm
Dimension of article:	180x50x15 mm
Country of origin:	China