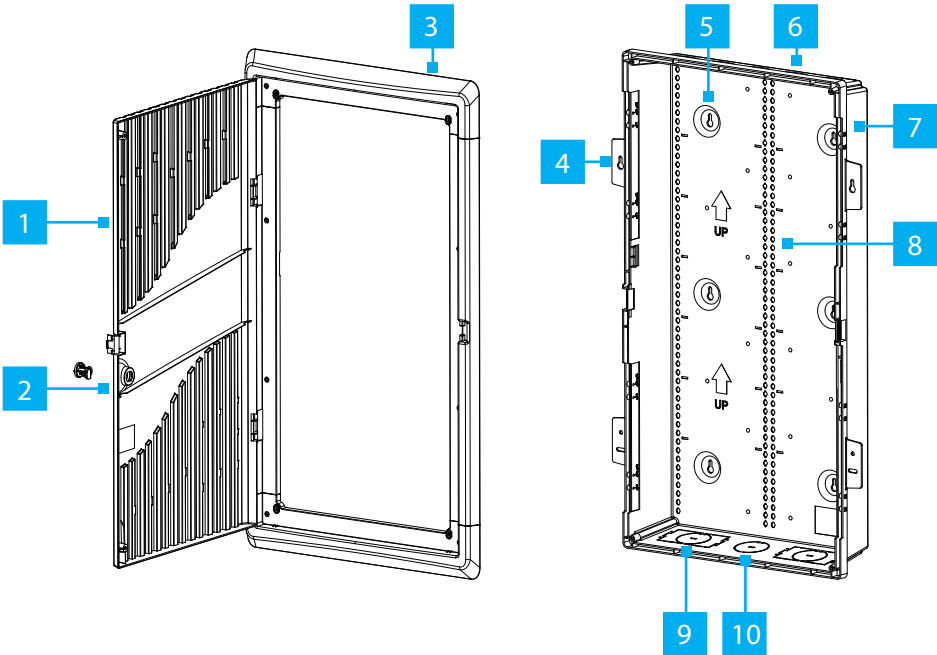


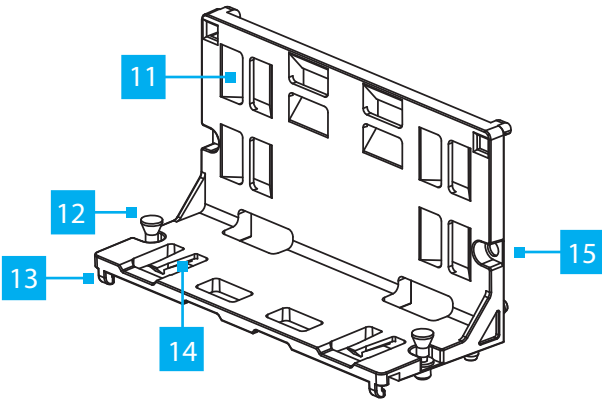
Wall Mounted Media Enclosure - 28in (711mm) Tall

Product ID

28P1-MEDIA-ENCLOSURE



Shelf Bracket



Component		Function
1	Door	<ul style="list-style-type: none"><li>Keeps the equipment secure and out of view</li><li>Vents along the door help with passive cooling</li></ul>
2	Door Lock	<ul style="list-style-type: none"><li>Rotate <b>Clockwise</b> to lock the door using the small handle</li></ul>
3	Door Frame	<ul style="list-style-type: none"><li>Install onto the <b>Main Body</b></li></ul>
4	Stud Mounting Points	<ul style="list-style-type: none"><li>Use to secure the <b>Main Body</b> to a wooden stud wall</li><li>Spaced 16-inch (40.6cm)</li><li>Keyhole mounting</li></ul>
5	Wall Mounting Points	<ul style="list-style-type: none"><li>Use to secure the <b>Main Body</b> to a wall or wooden board</li></ul>
6	Knockout Holes	<ul style="list-style-type: none"><li>Cut and remove as needed to insert structural wiring</li><li>Use the included <b>Rubber grommet</b> to protect the wiring</li></ul>
7	Main Body	<ul style="list-style-type: none"><li><b>Keyhole Mounting Holes</b> along the body allow to attach the <b>Main Body</b> to a wall or wooden board securely</li><li>The outer width is compatible with the standard 16-inch spacing of North American wall studs, allowing for mounting between studs</li></ul>
8	Shelf Bracket/ Equipment Mounting Points	<ul style="list-style-type: none"><li>Located on the sides and middle of the <b>Main Body</b> allow to mount the <b>Shelf Bracket</b> or <b>Equipment</b></li></ul>
9	Single-Gang Electrical Box Knockouts	<ul style="list-style-type: none"><li>Located on either side at the bottom of the <b>Main Body</b></li></ul>
10	Knockout Hole	<ul style="list-style-type: none"><li>Cut and remove as needed to insert structural wiring</li><li>Use the included <b>Rubber Grommet</b> to protect the wiring</li></ul>
11	Tether Points	<ul style="list-style-type: none"><li>Available around the <b>Shelf Bracket</b></li><li>Use with ties or other cable management solution</li></ul>
12	Plastic Rivet	<ul style="list-style-type: none"><li>Use to securely fasten the <b>Shelf Bracket</b> to the <b>Shelf/Equipment Mounting Points</b> by pushing the <b>Plastic Rivet</b> into a <b>Rivet Mounting Point</b></li><li>Pull the top of the <b>Plastic Rivet</b> to release and remove the <b>Shelf Bracket</b> once is mounted</li><li><b>Rivet Mounting Points</b> available around the <b>Shelf Bracket</b> enable to mount it horizontally or vertically</li></ul>

13	Shelf Bracket Mounting Hook	<ul style="list-style-type: none"> <li>Enable to mount the <b>Shelf Bracket</b> onto the Shelf/<b>Equipment Mounting Points</b></li> <li>Located on each corner of the <b>Shelf Bracket</b></li> </ul>
14	Hook-and-Loop Tether Point	<ul style="list-style-type: none"> <li>Use to pass trough <b>Hook-and-Loop</b> ties for cable management</li> </ul>
15	Rivet Mounting Point	<ul style="list-style-type: none"> <li>Allows to install a <b>Plastic Rivet</b> into place</li> </ul> <p><b>Note:</b> Once the Plastic Rivet is inserted into a Rivet Mounting Point it cannot be removed.</p>

## Product Information

For the latest manuals, product information, technical specifications, and declarations of conformance, please visit: [www.StarTech.com/28P1-MEDIA-ENCLOSURE](http://www.StarTech.com/28P1-MEDIA-ENCLOSURE)

## Requirements

- Phillips head screwdriver
- Electric drill (optional)
- Electronic stud finder (optional)
- Spirit/bubble level (optional)
- Pencil (optional)
- Flush cutter or similar (optional)

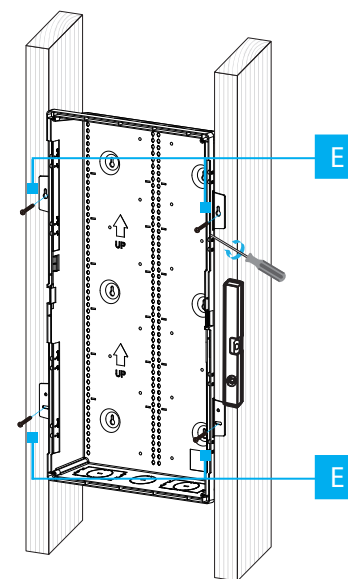
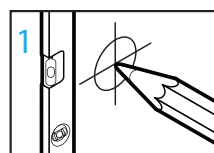
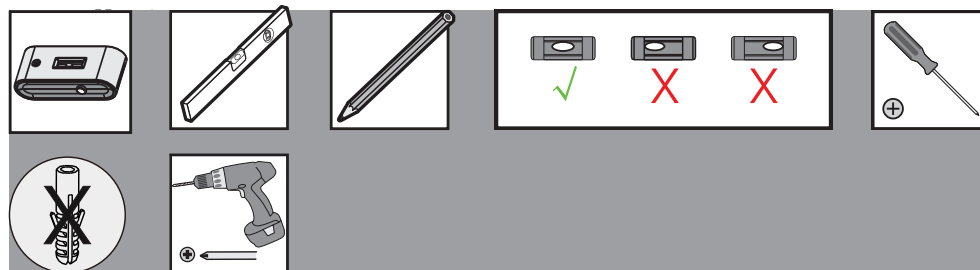
## Package Contents

- Wall-Mount Media Enclosure (**A**) x 1
- Door with Frame (**B**) x 1
- Rubber Grommet (**C**) x 8
- Door Latch (**D**) x 1
- #8x25.4 Screws (**E**) x 6
- #6-20x7/8 Screws (**F**) x 2
- T3.5x15 Screws (**G**) x 8
- Shelf Brackets (**H**) x 2
- Nylon Rivets (Male) (**I**) x 8
- Nylon Rivets (Female) (**J**) x 8
- Plastic Hook (**K**) x 6
- 3ft (0.91m) Hook and Loop Strap (**L**) x 1
- Quick-Start Guide x 1

## Warnings!

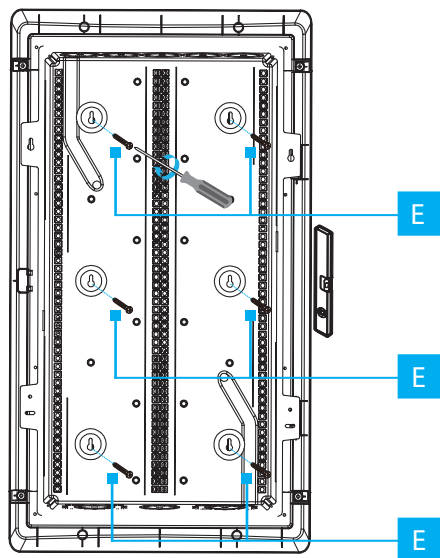
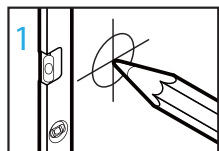
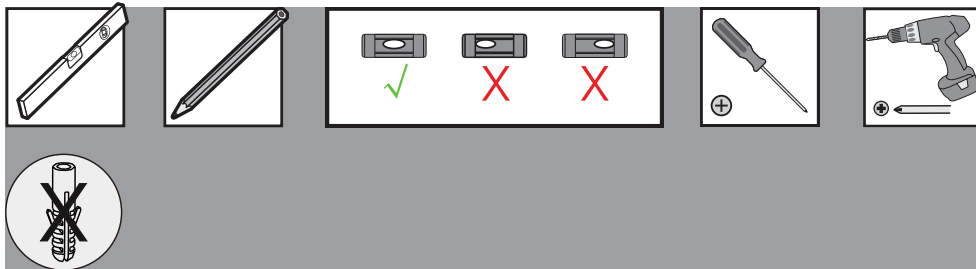
- StarTech.com Ltd. is not responsible for any property damage and/or personal injury resulting from the installation procedures outlined in this technical document.
- Read the entire manual and ensure the instructions are fully understood before assembling and/or using this product.

- This product is designed to be installed on wooden studded, solid concrete, or cinder block walls only.
- Before adding equipment to this product, ensure this product has been properly mounted.
- Never operate this product if parts are missing or damaged.
- The mounting hardware included with this product might not be adequate for some wall structures. If lacking the necessary expertise to wall mount this product, contact a construction professional to install the wall mount or to provide specific mounting instructions for the wall structure.
- Ensure the weight of the equipment does not exceed the weight capacity of this product. If the weight capacity is exceeded, personal injury or damage to the equipment are possibilities. These products can support the following weight: up to 22lb (10kg).
- Ensure the type of wall structure and mounting hardware will properly support the mounted equipment. Failure to do so might result in personal injury and/or equipment damage. The wall structure should be capable of supporting at least four times the weight of the mounted equipment.



## Wall or Board Mounting (Surface)

1

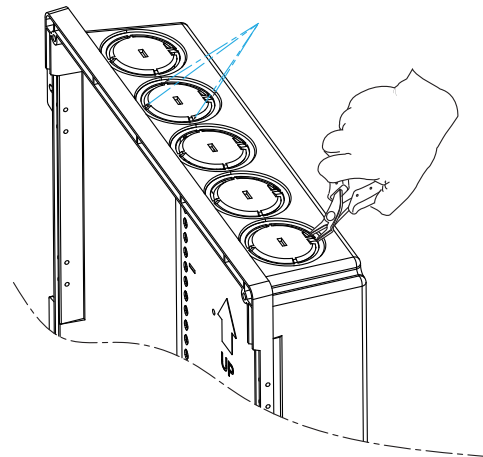


## Wiring

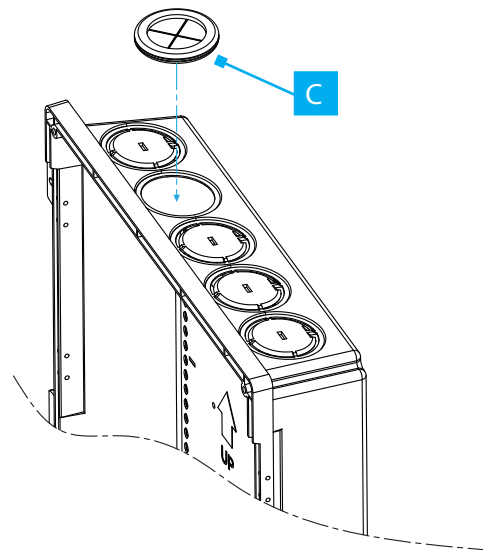
### Warnings!

Exercise caution when cutting the Knockout Holes, and be mindful of the sharp edges.

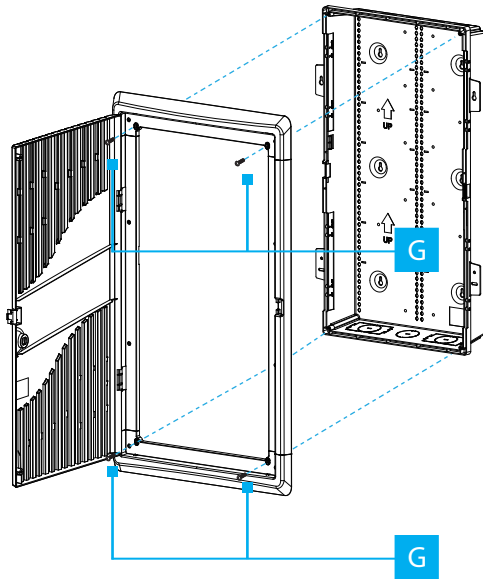
1



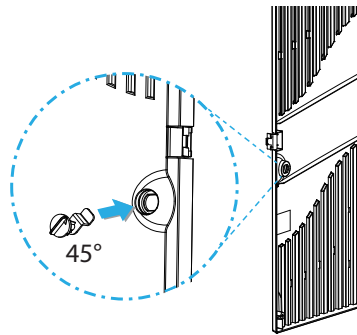
2



1



2



## Use of Trademarks, Registered Trademarks, and other Protected Names and Symbols

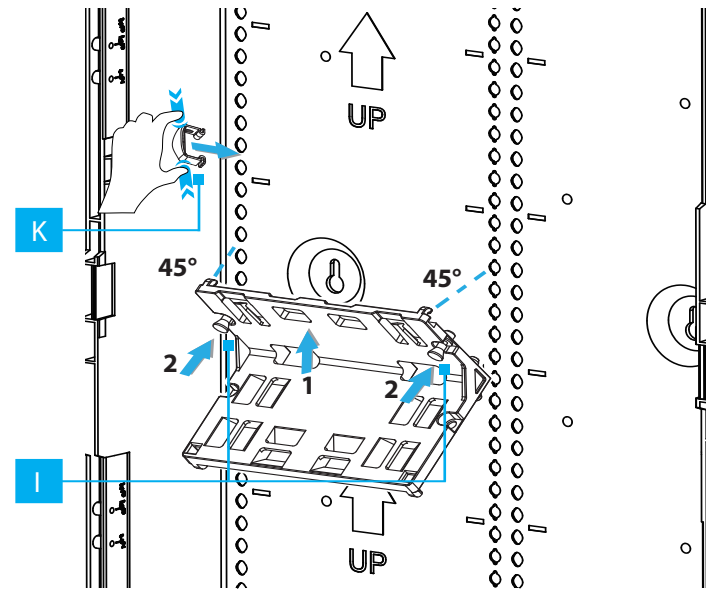
PHILLIPS® is a registered trademark of Phillips Screw Company in the United States or other countries.

This product is backed by a 2-year warranty.

For further information on product warranty terms and conditions, please refer to [www.startech.com/warranty](http://www.startech.com/warranty).

In no event shall the liability of StarTech.com Ltd. and StarTech.com USA LLP (or their officers, directors, employees or agents) for any damages (whether direct or indirect, special, punitive, incidental, consequential, or otherwise), loss of profits, loss of business, or any pecuniary loss, arising out of or related to the use of the product exceed the actual price paid for the product. Some states do not allow the exclusion or limitation of incidental or consequential damages. If such laws apply, the limitations or exclusions contained in this statement may not apply to you.

## 1



**Note:** Position the Shelf Bracket at a 45° angle and insert the Shelf Bracket Mounting Hooks into the Shelf Bracket/Equipment Mounting Points. Push the Nylon Rivets to secure the Shelf Bracket into place.



[www.quefairedemesdechets.fr](http://www.quefairedemesdechets.fr)

**StarTech.com Ltd.**  
Siriusdreef 17-27  
2132 WT Hoofddorp  
The Netherlands

FR: [startech.com/fr](http://startech.com/fr)  
DE: [startech.com/de](http://startech.com/de)  
ES: [startech.com/es](http://startech.com/es)  
NL: [startech.com/nl](http://startech.com/nl)  
IT: [startech.com/it](http://startech.com/it)  
JP: [startech.com/jp](http://startech.com/jp)