



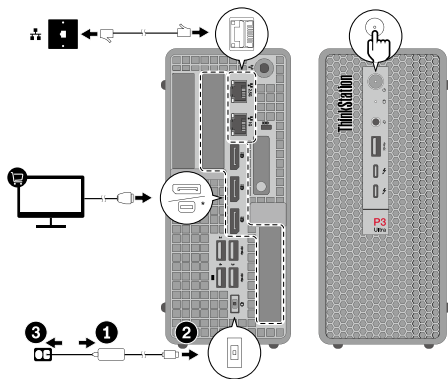
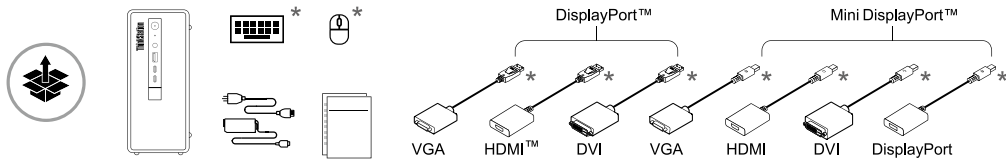
Lenovo  
**ThinkStation**

# ThinkStation P3 Ultra





Lenovo

## Overview



 x 5 USB-A 3.2 Gen 2

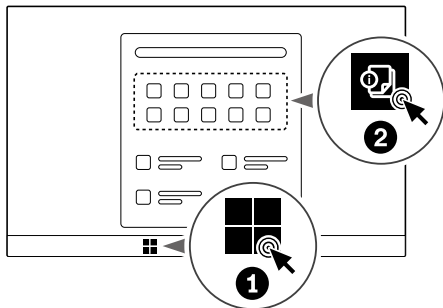
 x 2 USB-C® (Thunderbolt™ 4)

 x 3 DisplayPort™

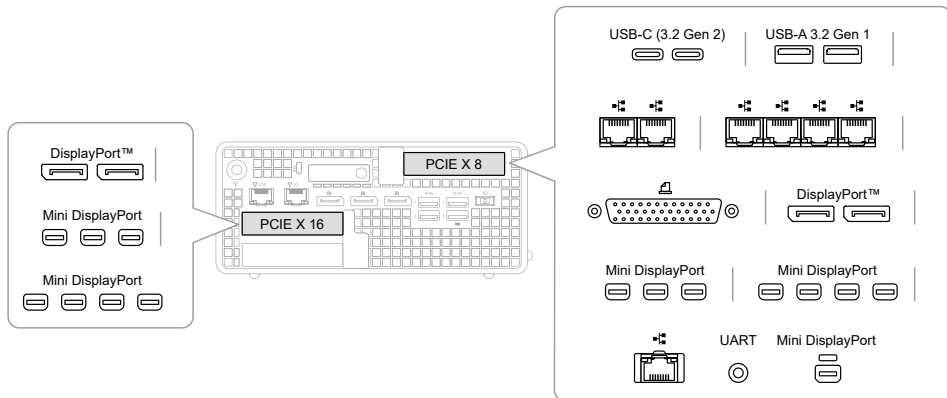
 Mini DisplayPort™\*

Turn to User Guide for USB transfer rate and more product information.

\*For selected models



## Expansion modules\*



You can configure the expansion module to support many types of devices and scenarios, including but not limited to the following:



[English]

## European Union (EU) / United Kingdom (UK) — radio frequency and power

This radio equipment operates with the following frequency bands and maximum radio-frequency power:

Technology	Frequency band [MHz]	Maximum transmit power
WLAN 802.11b/g/n/ax	2400 - 2483.5	< 20 dBm

Technology	Frequency band [MHz]	Maximum transmit power
WLAN 802.11a/n/ac/ax	5150 - 5725	< 23 dBm
WLAN 802.11a/n/ac/ax	5725 - 5875	< 13.98 dBm
WLAN 802.11ax	5945 - 6425	< 23 dBm
Bluetooth BR/EDR/LE	2400 - 2483.5	< 20 dBm

**Note:** Not all wireless bands may be enabled depending on your product configuration. Usage of this device is limited to indoor locations in the bands 5150 - 5350 MHz and 5945 - 6425 MHz.

Third Edition  
(September 2024)  
© Copyright Lenovo 2023, 2024.

LENOVO, LENOVO logo, ThinkStation, and ThinkStation logo are trademarks of Lenovo. DisplayPort and Mini DisplayPort (mDP) are trademarks of the Video Electronics Standards Association. Wi-Fi is a registered trademark of Wi-Fi Alliance. USB-C is a registered trademark of USB Implementers Forum. All other trademarks are the property of their respective owners. Thunderbolt is a trademark of Intel Corporation or its subsidiaries in the U.S. and/or other countries.

LIMITED AND RESTRICTED RIGHTS NOTICE: If data or software is delivered pursuant to a General Services Administration "GSA" contract, use, reproduction, or disclosure is subject to restrictions set forth in Contract No. GS-35F-05925.

Reduce  
Reuse  
Recycle



For FSC Mix logo only