



CorePro LED PLC 4P



CorePro LED PLC 9.5W 840 4P G24q-3

LED, PL-C, HF/Mains, G24Q-3 ROT, 9.5 W, 26W PL-C, 4000 K, 1100 lm, CRI 82, 30000 hour(s)

The CorePro LED PLC 4P integrates a LED light source into a traditional fluorescent form factor. This product is the ideal solution for uplamping in general lighting applications: it meets basic lighting requirements, offers significant energy savings, and is environmentally friendly.

Product data

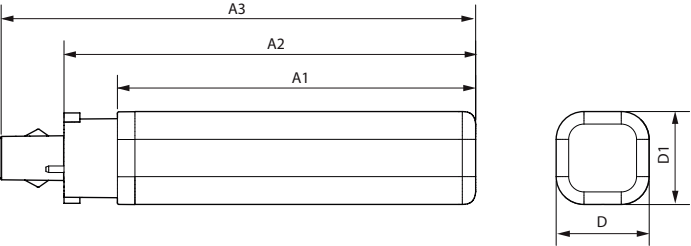
General Information		Operating and Electrical	
Cap-Base	G24q-3 ROT	Input Frequency	50 to 60 Hz
Nominal lifetime	30,000 hour(s)	Power Consumption	9.5 W
Switching Cycle	200,000	Lamp Current (Nom)	52 mA
Lighting Technology	LED	Starting Time (Nom)	0.5 s
Flux measurement reference	Sphere	Warm-up time to 60% light	0.5 s
Warranty period	3 years	Power Factor (Fraction)	0.9
Light Technical		Voltage (Nom)	220-240 V
Color Code	840 [CCT of 4000K]	LED alternative to fluorescent lamp power	26W PL-C
Beam Angle (Nom)	120 degree(s)	Inrush current at mains	7.5
Luminous Flux	1,100 lm	Max. lamp no. on MCB B type 10A - Mains	160
Color Designation	Cool White (CW)	Max. lamp no. on MCB B type 10A – EM ballast without Compensation Capacitor.	-
Correlated Color Temperature (Nom)	4000 K	Max. lamp no. on MCB B type 10A – EM ballast with Compensation Capacitor.	-
Luminous Efficacy (rated) (Nom)	115 lm/W	Max. lamp no. on MCB B type 16A - Mains	250
Color Consistency	<6	Max. lamp no. on MCB B type 16A – EM ballast without Compensation Capacitor.	-
Color rendering index (CRI)	82		
LLMF At End Of Nominal Lifetime (Nom)	70 %		

CorePro LED PLC 4P

Max. lamp no. on MCB B type 16A – EM ballast with Compensation Capacitor.	-
Ballast Compatibility	HF/Mains
Temperature	
T-Case Maximum (Nom)	75 °C
Controls and Dimming	
Dimmable	No
Mechanical and Housing	
Bulb Finish	Frosted
Bulb Material	Plastic
Product Length	148 mm
Bulb Shape	PL-C
Net Weight (Piece)	0.108 kg
Approval and Application	
Energy Efficiency Class	E
Energy Saving Product	Yes
Approval Marks	RoHS compliance
Energy Consumption kWh/1000 h	10 kWh
EPREL Registration Number	1945440
CE mark	Yes

EU RoHS compliant	Yes
Flickering value (PstLM) - Flickering value as per EN 61000-3-3	1
Stroboscopic effect visibility measure (SVM)	0.4
Ambient temperature range	-20 to +45 °C
Application Conditions	
can it be used in closed luminaires	Yes
Product Data	
Order product name	CorePro LED PLC 9.5W 840 4P G24q-3
Full product name	CorePro LED PLC 9.5W 840 4P G24q-3
Full product code	872016929051800
Order code	929003758102
Material Nr. (12NC)	929003758102
Numerator - Quantity Per Pack	1
EAN/UPC - Product/Case	8720169290518
Numerator - Packs per outer box	10
EAN/UPC - Case	8720169290525

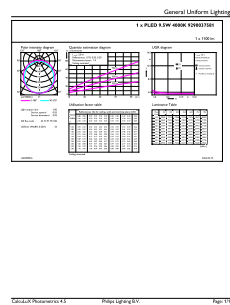
Dimensional drawing



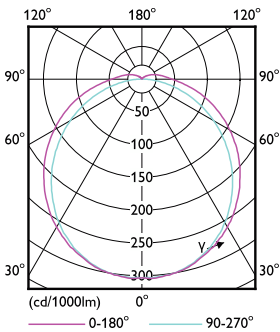
Product	D1	D2	A1	A2	A3
CorePro LED PLC 9.5W 840 4P G24q-3	34 mm	34 mm	129 mm	148 mm	164 mm

CorePro LED PLC 4P

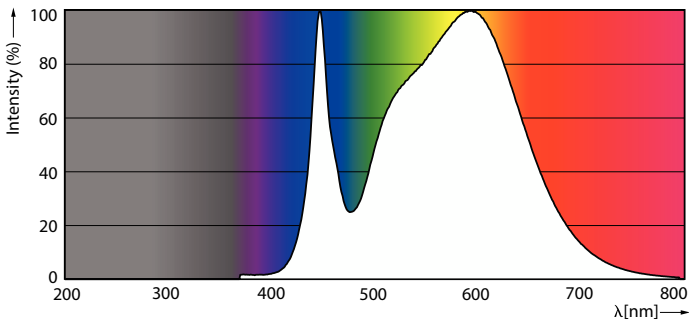
Photometric data



General uniform lighting - CorePro LED PLC 9.5W 840 4P G24q-3

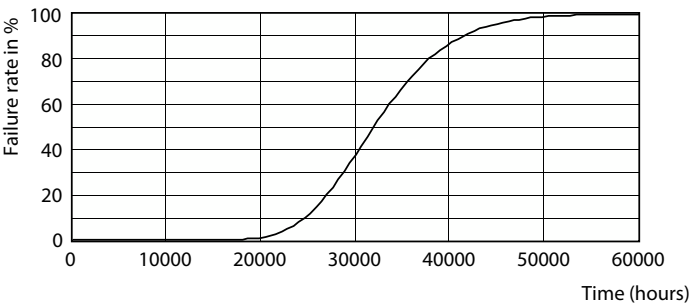


Light Distribution Diagram - CorePro LED PLC 9.5W 840 4P G24q-3

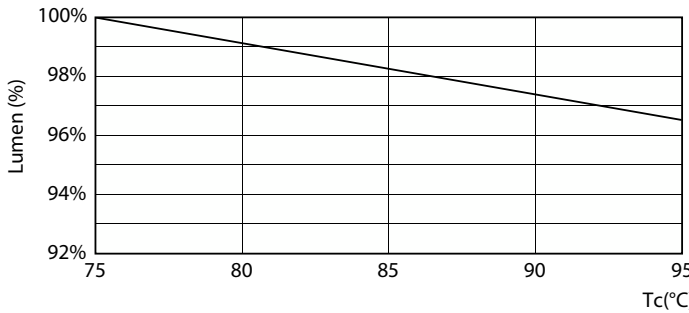


Spectral Power Distribution Colour - CorePro LED PLC 9.5W 840 4P G24q-3

Lifetime



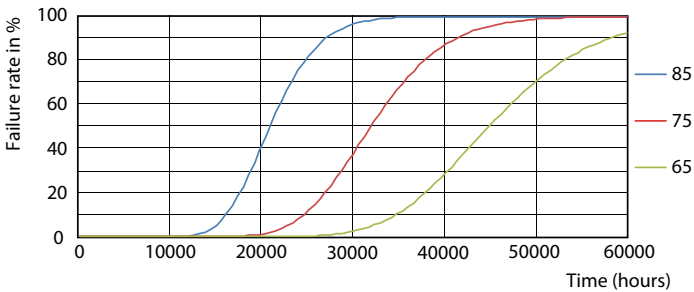
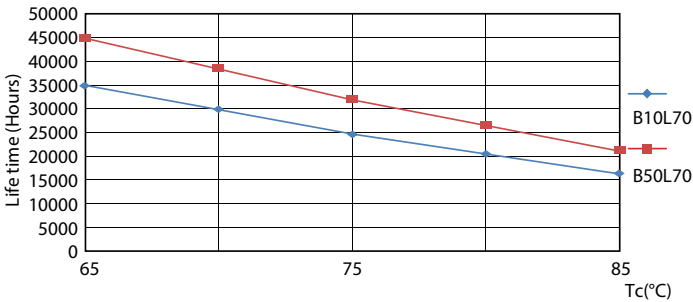
Life Expectancy Diagram



Lumen Maintenance Diagram - CorePro LED PLC 9.5W 840 4P G24q-3

CorePro LED PLC 4P

Lifetime



LifetimeVsTc

FailureRate



Lumen Maintenance Diagram - CorePro LED PLC 9.5W 840 4P G24q-3

