

## Single Air Chamber SUP Manual

# OWNER'S MANUAL

Save These Instructions – Read carefully before operating.

Follow all safety and operating instructions. If you don't follow these instructions, it may cause the boat to overturn or explode and result in injury or death.

## IMPORTANT SAFETY INSTRUCTIONS



Visit [www.bestwaycorp.com/support](http://www.bestwaycorp.com/support) for help

WE SUGGEST NOT TO RETURN THE PRODUCT TO THE STORE

QUESTIONS? PROBLEMS? MISSING PARTS?

For FAQ, Manuals, Videos Or Spare Parts, Please Visit [bestwaycorp.com/support](http://bestwaycorp.com/support)

- Carefully read, understand, and follow all information in this user manual before inflating and using the SUP.
- These warnings, instructions, and safety guidelines address some common risks during the use of the SUP, but they cannot cover all risks and dangers in all cases. For your own safety, always heed the advice and warnings in these instructions. Non-compliance with these operating instructions may expose you to serious danger or death. Only use the product in the places and conditions for which it is intended.
- Keep these instructions in a safe place. If misplaced, find them on the website [www.bestwaycorp.com/support](http://www.bestwaycorp.com/support).
- Stand-up paddleboarding can be a dangerous sport. Use of this product exposes the user to unexpected risks, dangers and hazards.
- User should realize and understand these risks. The use of this product implies the respect of the safety instructions described in the manual.
- Regardless of the number of persons on board, the total weight of persons and equipment must never exceed the maximum recommended weight capacity.
- Do not use this product if you are under the influence of alcohol, drugs or medications.
- Life saving devices such as life jackets and buoys should be pre-inspected and used at all times. Always paddle with an experienced partner when using this product.
- Tell your sail routes and time schedule to your partner.
- Check the weather forecast first to understand marine environment and weather conditions before starting. Bad weather and marine environments can be very dangerous. Never use this product in conditions that are beyond your ability (such as, but not limited to, high surf, riptides, currents or river rapids).
- Use the product near the shore and beware of natural factors such as wind, tides and tidal waves. **BE AWARE OF OFFSHORE WINDS AND CURRENTS.**
- Before every use, carefully inspect the product for signs of wear or leaks to ensure everything is in good condition. Please do not use the SUP if you find any damage. Do not paddle in unfamiliar water areas.
- Beware of potential harmful effects of liquids such as battery acid, oil and petrol. These liquids may damage the product. Inflate according to the rated pressure on the product or it will cause over inflation and/or an explosion.
- Stay balanced. Uneven distribution of weight on the board may cause the board to overturn, which could lead to drowning.
- Know how to operate this product. Check your local area for information and/or training as needed.

- Inform yourself about local regulations and dangers related to paddleboarding, surfing, boating and/or other water activities.
- The air pressure gauge of the hand pump only shows air pressure higher than 5 psi, which is normal. When the air pressure in the product is lower than 5 psi, the air pressure gauge will not show a value.
- When aboard the SUP, wear the leash at all times. Ensure the leash does not snag or get caught on obstacles during use to avoid being entangled or trapped.

## PRODUCT DESCRIPTIONS

Item Number	Inflated Size	Recommended Working Pressure	Maximum Weight Capacity	Maximum Number of People
6532A	2.74 m x 76 cm x 12 cm (9' x 30" x 4.75")	15 psi (1.03 bar)	100 kg (220 lbs)	1 adult
6532B	3.05 m x 84 cm x 15 cm (10' x 33" x 6")	15 psi (1.03 bar)	130 kg (287 lbs)	1 adult
6532D	3.35 m x 91.5 cm x 15 cm (11' x 36" x 6")	15 psi (1.03 bar)	150 kg (330 lbs)	1 adult
6532E	3.35 m x 84 cm x 15 cm (11' x 33" x 6")	15 psi (1.03 bar)	150 kg (330 lbs)	1 adult
6532F	3.20 m x 79 cm x 12 cm (10'6" x 31" x 4.75")	15 psi (1.03 bar)	110 kg (243 lbs)	1 adult
6532G	3.81 m x 79 cm x 15 cm (12'6" x 31" x 6")	15 psi (1.03 bar)	150 kg (330 lbs)	1 adult
6532H	3.35 m x 91.5 cm x 15 cm (11' x 36" x 6")	15 psi (1.03 bar)	140 kg (309 lbs)	1 adult

## SETUP INSTRUCTIONS



### PARTS & TOOLS NEEDED

Compare the parts in your box to the parts listed on the top of the package. Verify that the equipment components represent the model that you had intended to purchase. If any parts are damaged or missing at the time of purchase, visit our website [bestwaycorp.com/support](https://bestwaycorp.com/support).



### ASSEMBLY INSTRUCTIONS

For inflation, follow the drawings printed on the top of the package. For spare part assembly and disassembly, follow the drawings inside this manual. Drawings are for illustration purposes only. May not reflect actual product. Not to scale.

A: Quick-release coiled ankle leash.

B: Quick-release coiled waist leash.

C: Fastening cord.

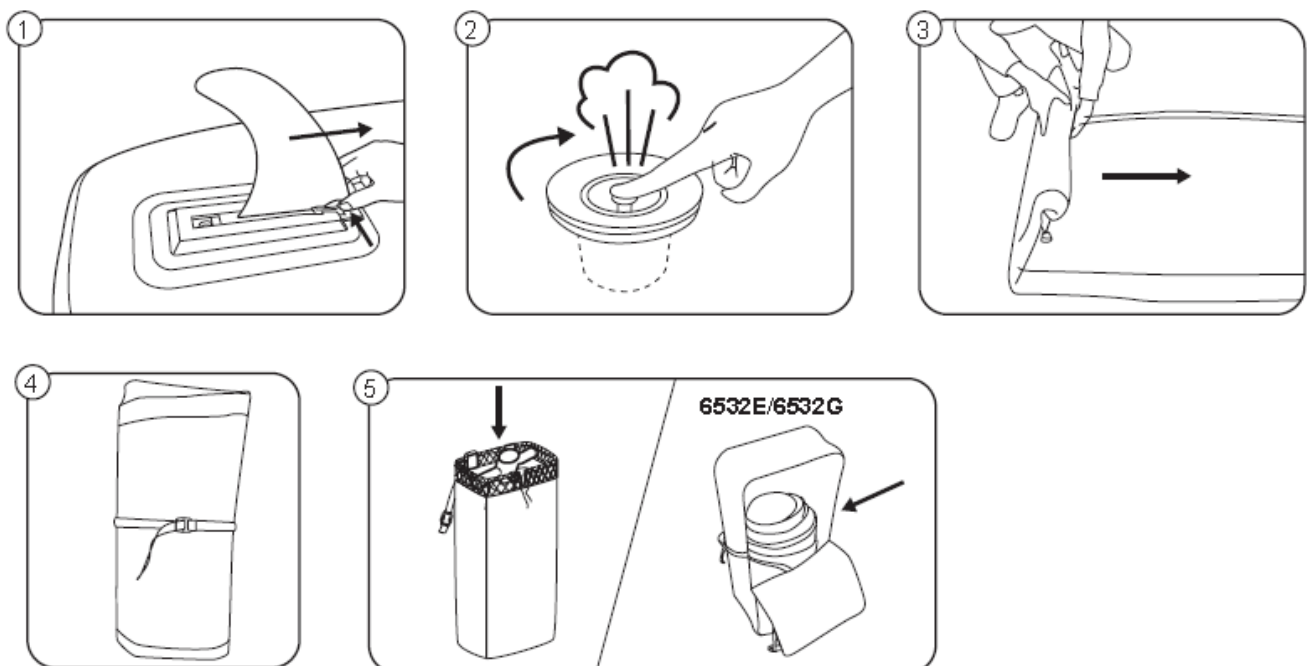
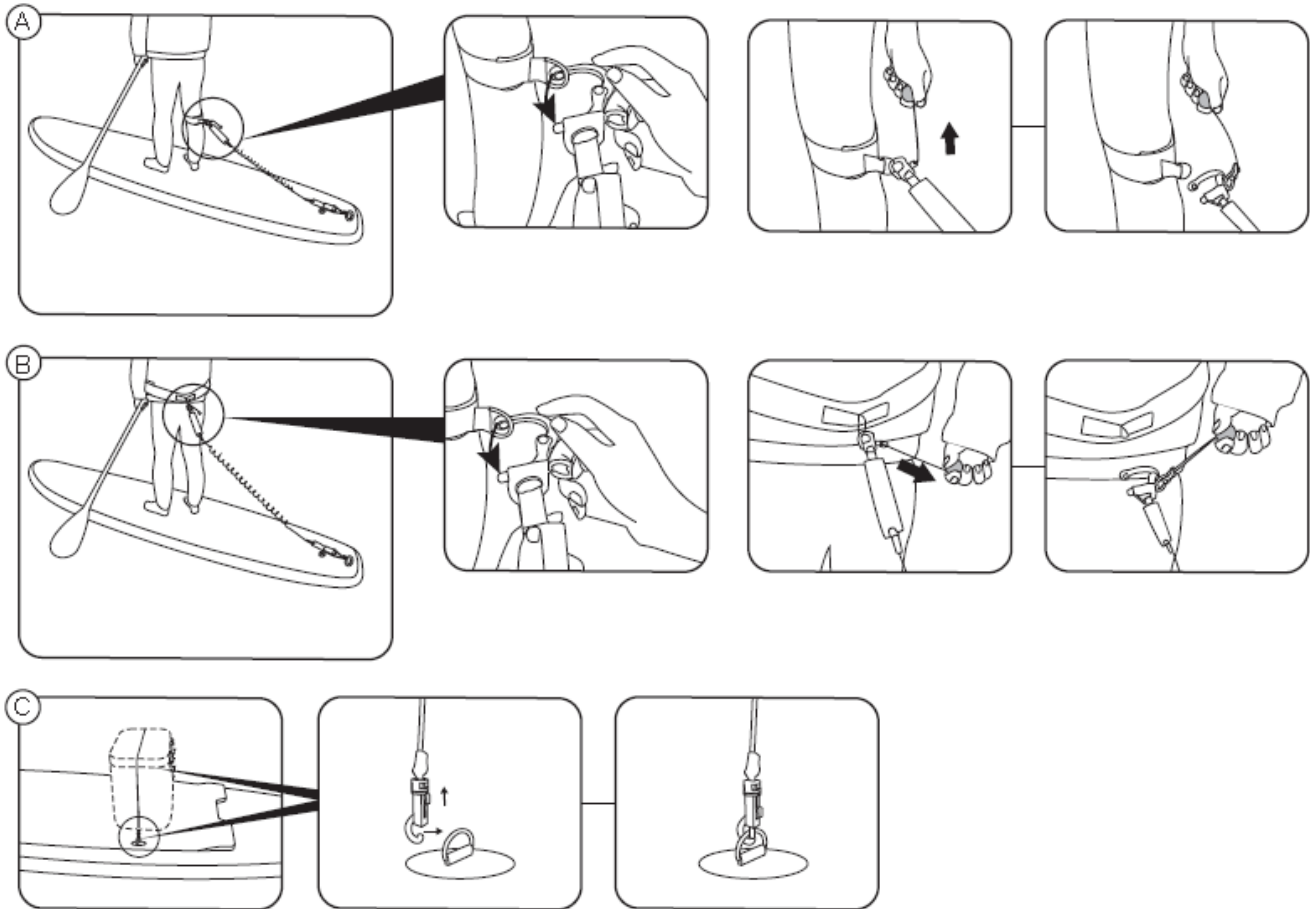
## MAINTENANCE & STORAGE

- Extended exposure to the sun can shorten the lifespan of your SUP. We suggest not leaving SUPs in direct sunlight for more than 1 hour after use.
- Deflate completely before folding the SUP.
- Store in a cool, dry place and out of children's reach.
- Do not unfold this product when the temperature is low. The product should be placed at room temperature (over 20°C/68°F) for 24 hours before inflation.

\*For 6532F, there are two methods for storage. Follow the drawings inside the manual for more details.

3.1-7.1 for quick and temporary storage.

3.2-7.2 for long-term storage.



\*6532F

