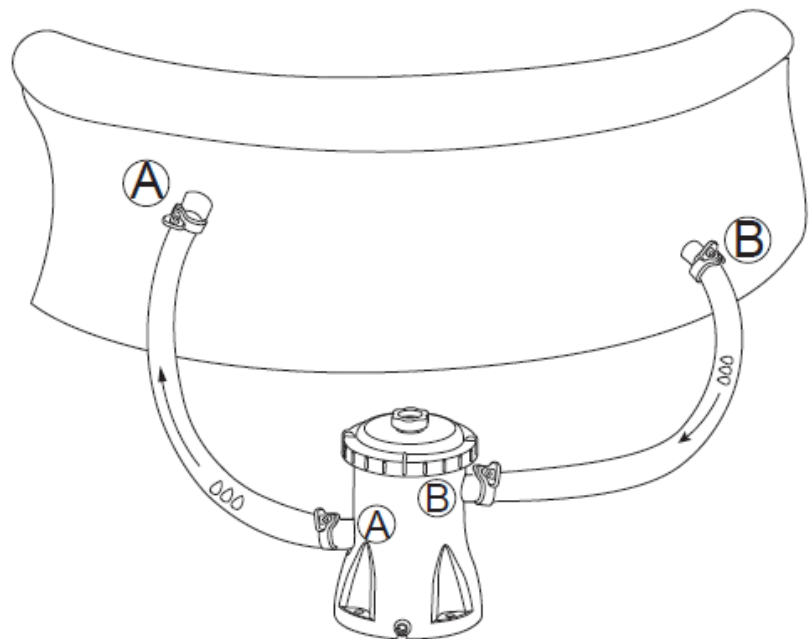
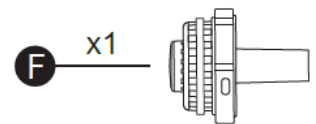
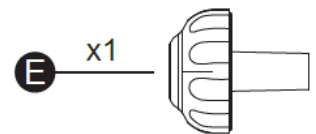
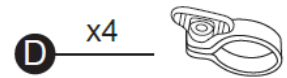
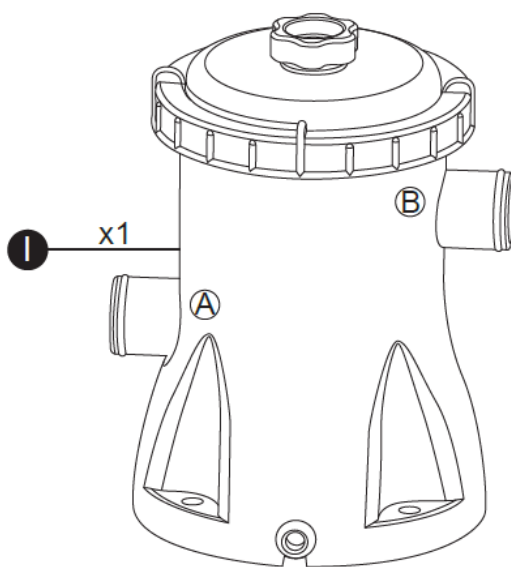
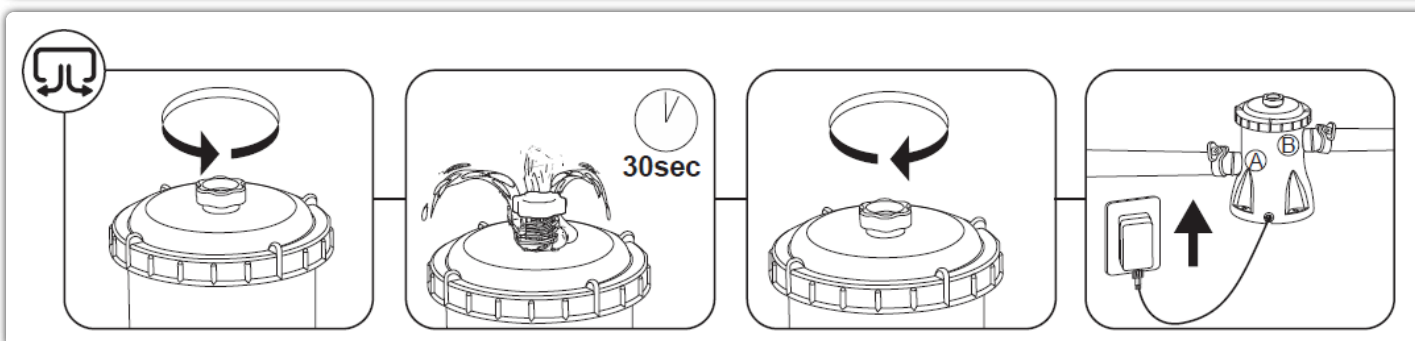
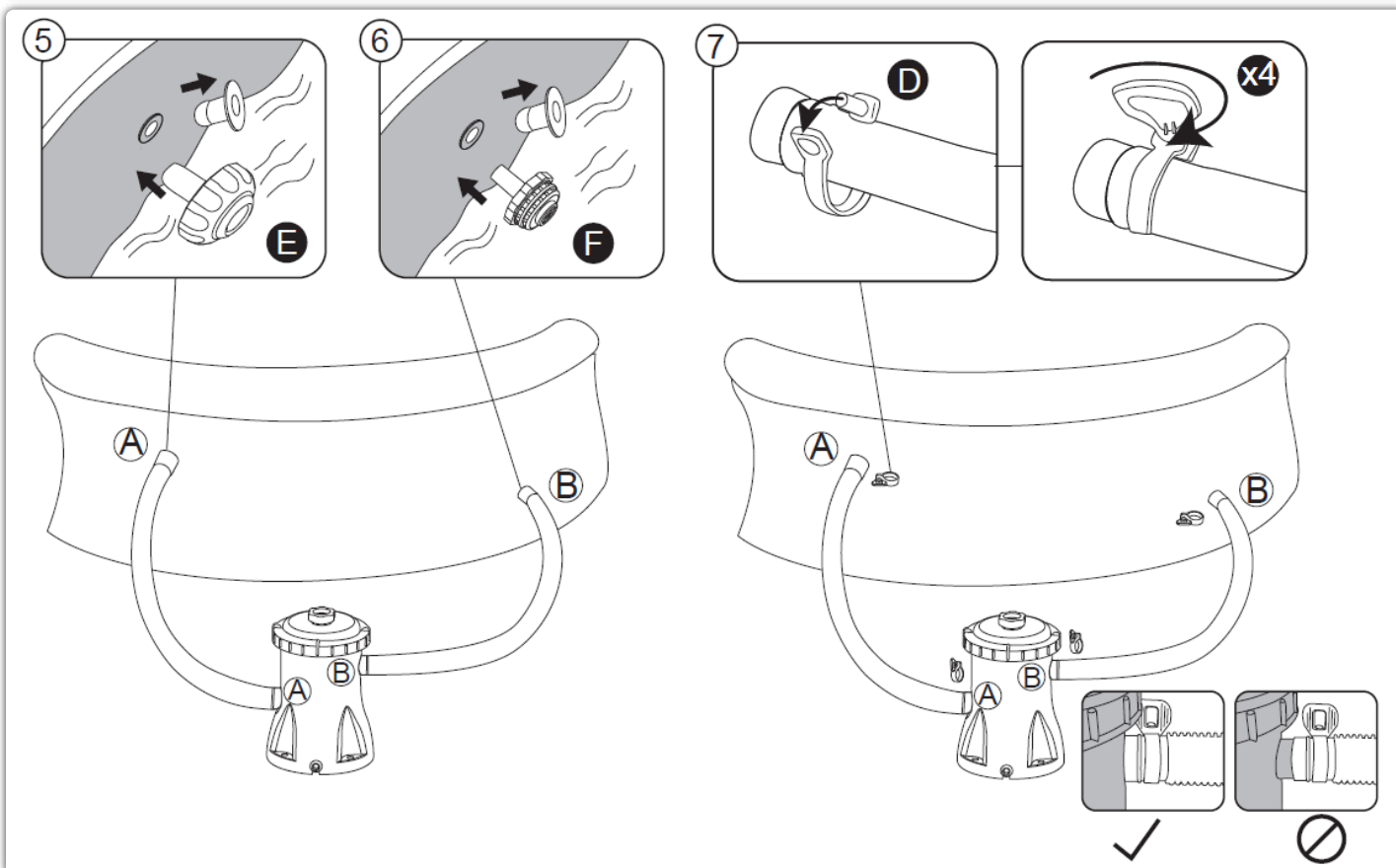
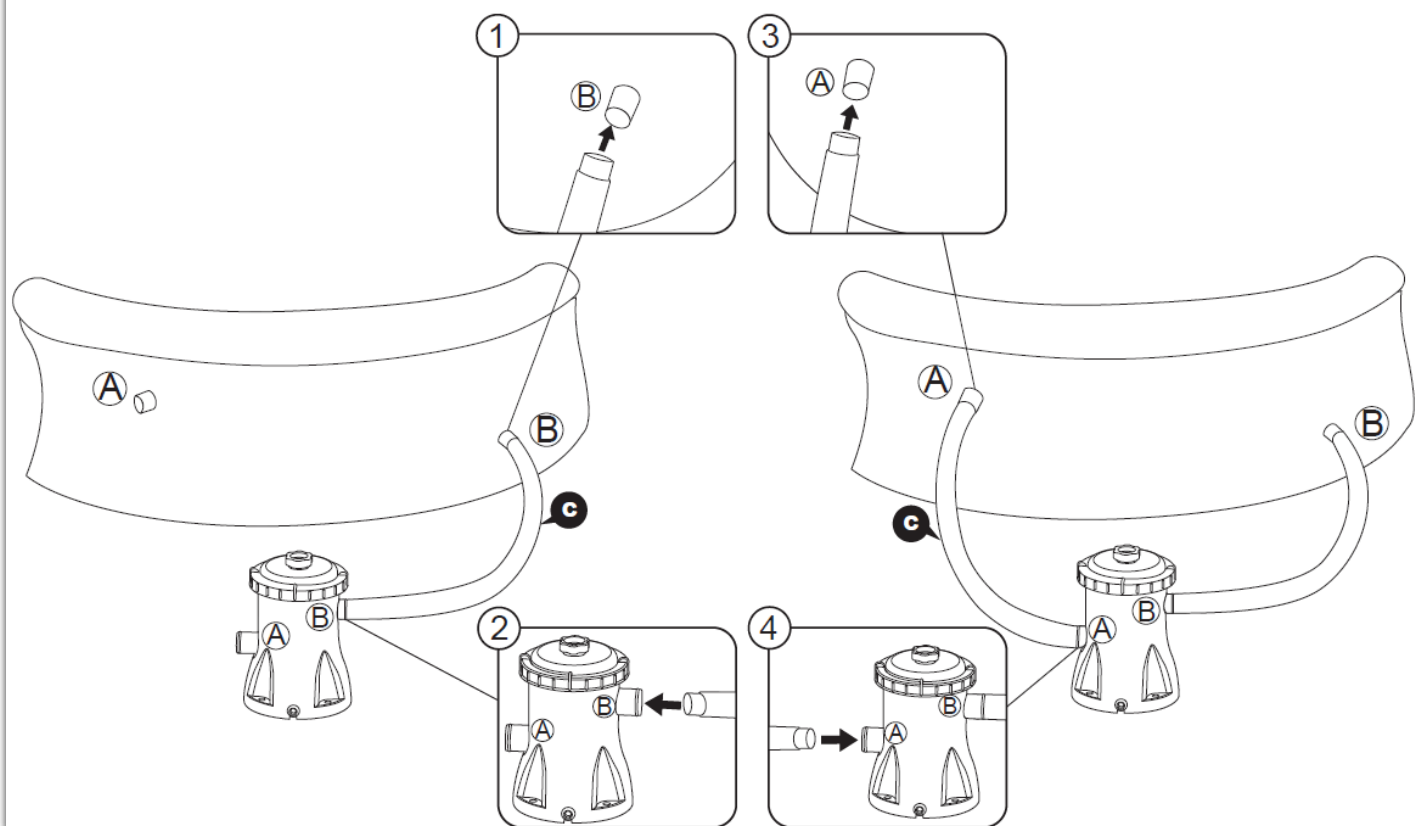
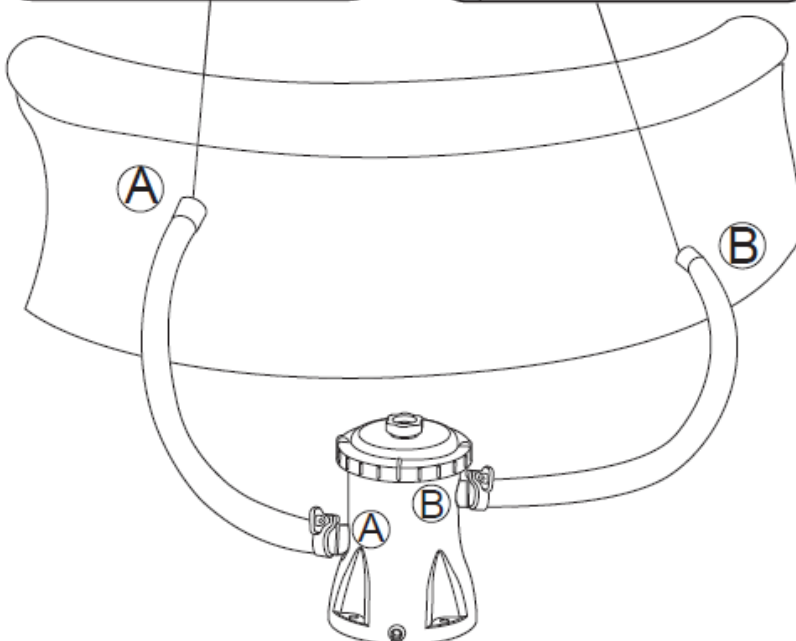
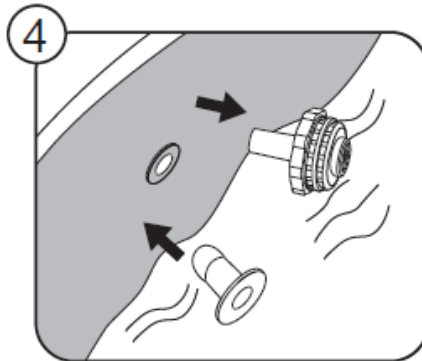
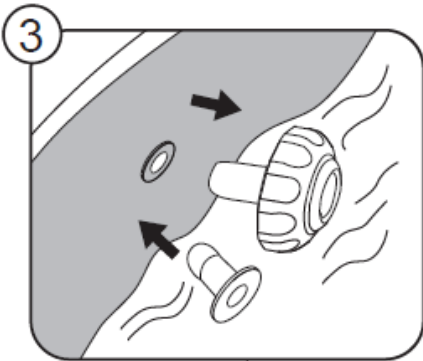
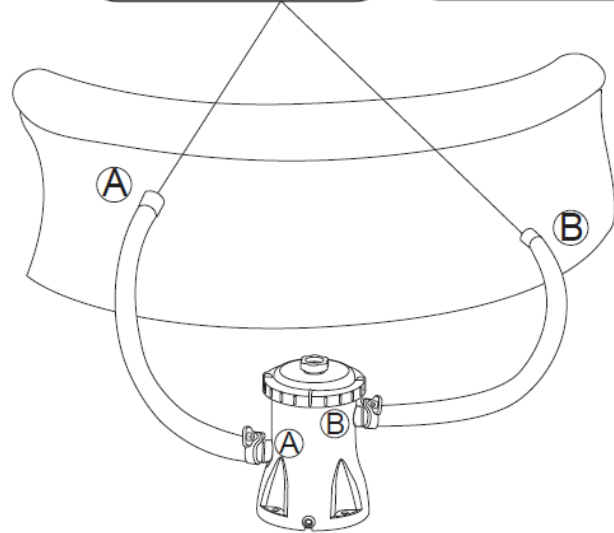
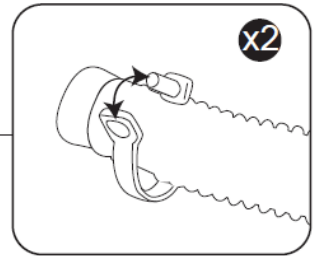
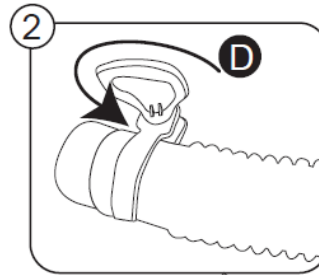
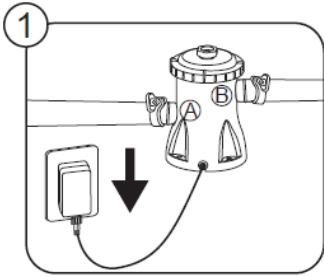
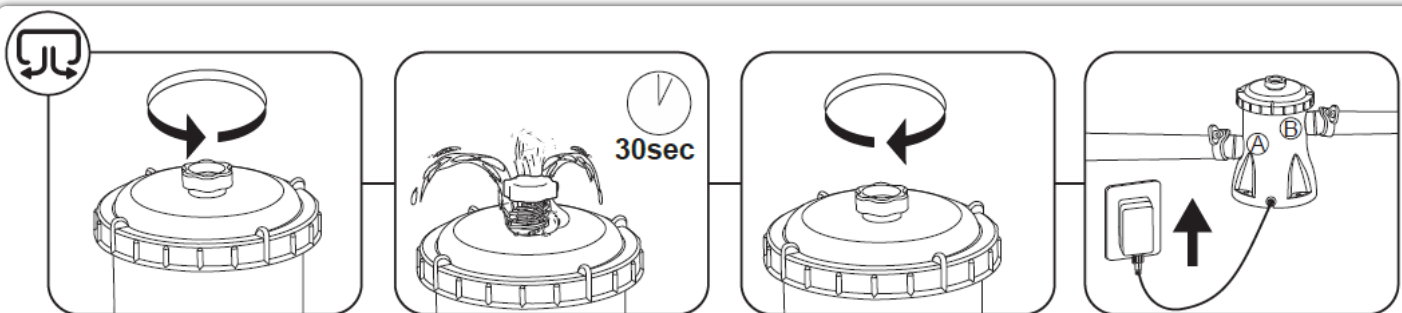
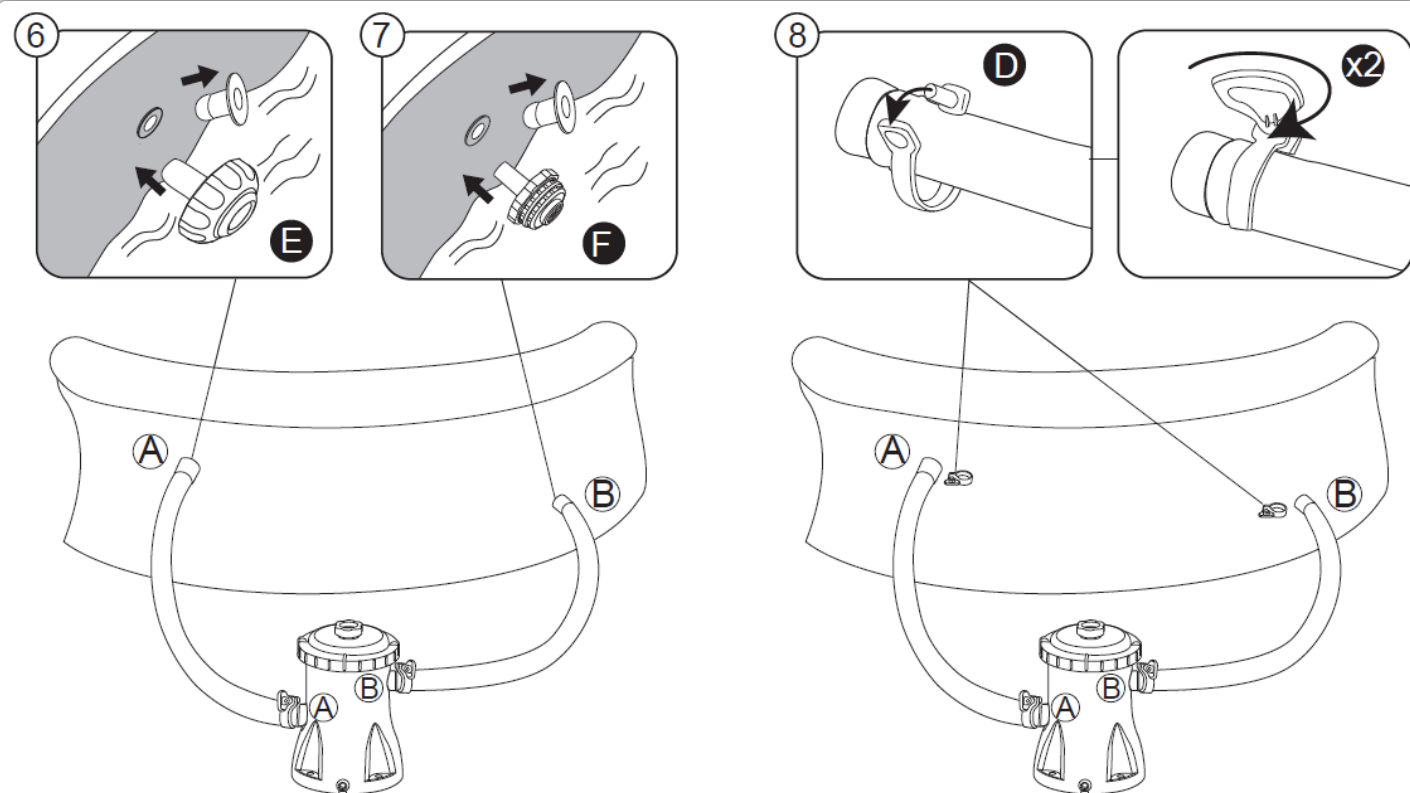
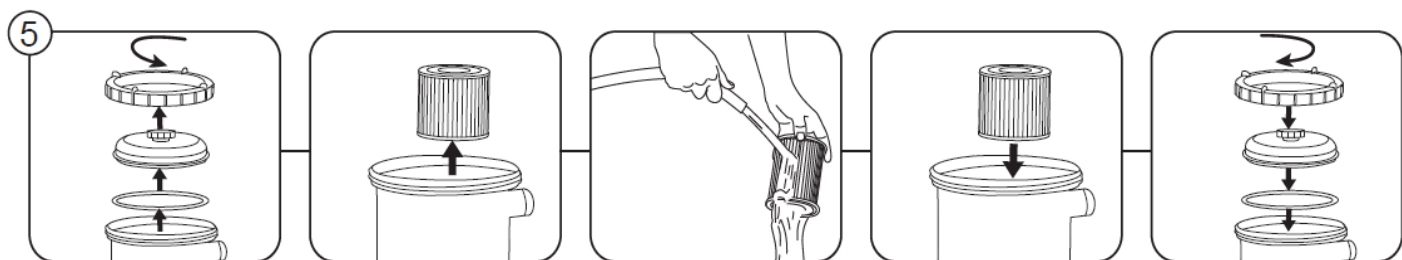


# 330 gal. 530 gal. 800 gal. / 1249 L 2006 L 3028 L Filter Pump Manual









## OWNER'S MANUAL

58381/58383/58386 Filter Pump



Visit the Bestway YouTube channel



Visit [www.bestwaycorp.com/support](http://www.bestwaycorp.com/support) for help

WE SUGGEST NOT TO RETURN THE PRODUCT TO THE STORE

QUESTIONS? PROBLEMS? MISSING PARTS?

For FAQ, Manuals, Videos Or Spare Parts, Please Visit [bestwaycorp.com/support](http://bestwaycorp.com/support)

## SAFETY INFORMATION

### READ AND FOLLOW ALL INSTRUCTIONS

Carefully read, understand, and follow all information in this user manual before installing and using the Filter Pump. These warnings, instructions, and safety guidelines address some common risks of water filtration systems, but they cannot cover all risks and dangers in all cases. Always use caution, common sense, and good judgment when enjoying any water activity. Retain this information for future use. In addition, the following information can be supplied depending on the Filter Pump type. Keep the instructions in a safe place. If instruction is missing, search it on the website [www.bestwaycorp.com/support](http://www.bestwaycorp.com/support).

### WARNING

- The pump is to be supplied by an isolating transformer or supplied through a residual current device (RCD) having a rated residual operating current not exceeding 30 mA.
- Consult a qualified electrician for any questions.
- The power source on the wall of building should keep more than 4m away from pool and at a height of 1.2m at least.
- The pump unit must only be supplied at safety extra low voltage corresponding to the marking on the appliance.
- Extension cords can't be used.
- The supply cord cannot be replaced. If the cord is damaged the appliance should be scrapped.
- Always disconnect the appliance from the supply before assembling, disassembling or cleaning.
- Appliances can be used by persons with reduced physical, sensory or mental capabilities or lack of experience and knowledge if they have been given supervision or instruction concerning use of the appliance in a safe way and if they understand the hazards involved.
- Children shall not play with the appliance.
- Pumps without indication that they are protected against the effect of freezing shall not be left outside during freezing weather conditions.
- Keep the transformer away from the pool and the filter pump more than 3.5m.
- When the appliance will be not used for a long time, such as in the winter, the pool set should be disassembled and stored indoor.
- Electric installations should follow national wiring rules.
- Only the media provided or specified by the manufacturer is to be used with product installation.
- It is essential to check that the suction openings are not obstructed.
- It is advisable to stop the filtration during maintenance operations on the filtration system.
- Regularly monitor the filter clogging level.
- A weekly check is recommended for cleaning.
- Minimum daily filtration operating time of 8 hours is recommended to ensure clear pool water.
- It is essential to change any damaged element or set of elements as soon as possible. Use only parts approved by person responsible for placing the product on the market.

- All filters and filter media shall be inspected regularly to ensure that there is not a build-up of detritus thus preventing good filtration. The disposal of any used filter media should also be in accordance with applicable regulations/ legislation.
- The water circulation installation shall comply with the European as well as national/local regulations, especially when dealing with electrical issues. Any change of valve position, pump size, grille size can cause a change of the flow and the suction velocity can be increased.
- It is necessary to have the plug accessible after installation of the pool.
- Please read the instruction manual carefully and keep it for future reference.
- If instruction is missed, please contact with Bestway or search it in website: [www.bestwaycorp.com](http://www.bestwaycorp.com)

## DISPOSAL



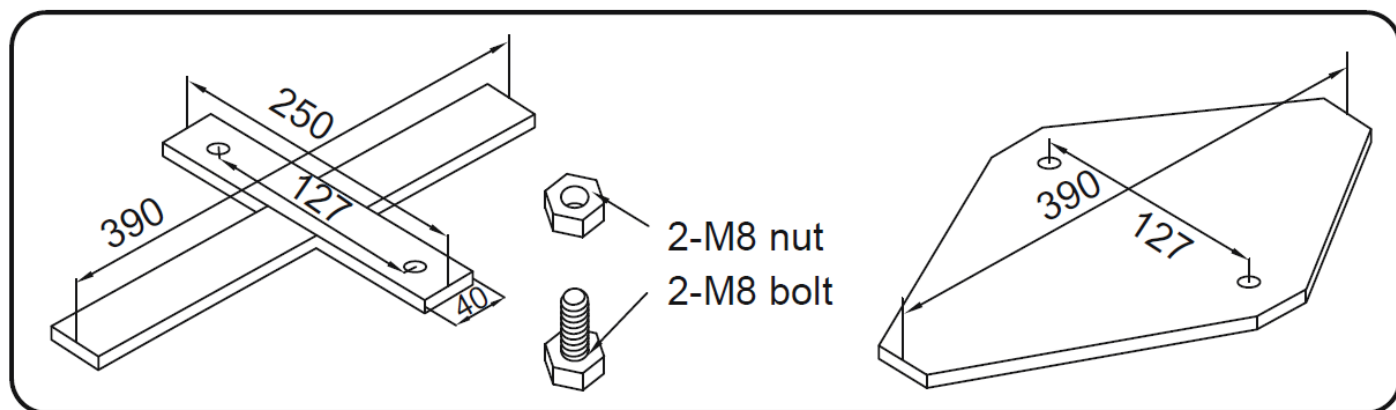
Electrical products should not be disposed of with household waste. Please recycle where facilities exist. Check with your local authority or retailer for recycling advice.

## TECHNICAL SAFETY INSTRUCTIONS

- Risk of electric shock, never run the filter pump when people are swimming in the pool.
- The appliance must be supplied by an earthed power source.
- Do not bury cord. Locate cord to minimize abuse from lawn mowers hedge trimmers, and other equipment.
- This pump is for use with storable pools only. Do not use with permanently-installed pools. A storable pool is constructed so that it is capable of being readily disassembled for storage and reassembled to its original integrity. A permanently-installed pool is constructed in or on the ground or in a building such that it cannot be readily disassembled for storage.
- Using the pump with an unmatched electrical supply is dangerous and will result in catastrophic failure of the pump.
- When working with electricity, turn the electrical power off at the circuit breaker and lock breaker door. Failure to do so will result in increased risk of shock, injury and possibly death.
- Do not remove the grounding prong or modify the plug in any way. Do not use adaptor plugs. Consult a qualified electrician for any questions related to the validity of your plugs grounding.
- Handle the pump with care. Do not pull or carry the pump by the power cord. Never pull a plug from the outlet by yanking the power cord. Keep cord free from abrasions. Sharp objects, oil, moving parts, and heat should never be exposed to the filter pump.
- Cleaning and user maintenance must be performed by an adult above 18 years old who is familiar with the risk of electric shock.
- In case of doubt on the pump or any circulation devices, contact qualified installer, or the manufacturer/importer/distributor.
- Mind all the safety requirements and recommendations described in the manual.
- Atmospheric conditions may affect the performance and life span of your filter pump. Unnecessary wear and tear may occur during periods of cold, heat and exposure to sun. Whenever possible, shelter the pump from these conditions.
- It is important to ensure the factory equipped stopper plugs for the inlet and outlet ports replace the screens before removal or maintenance on the pump is attempted.
- Do not add chemicals in the filter pump.
- Don't plug or unplug the appliance if your hand is wet.
- Always unplug the appliance: on rainy days, before cleaning or other maintenance, and when leaving it unattended on holidays.
- This product is not intended for commercial use.

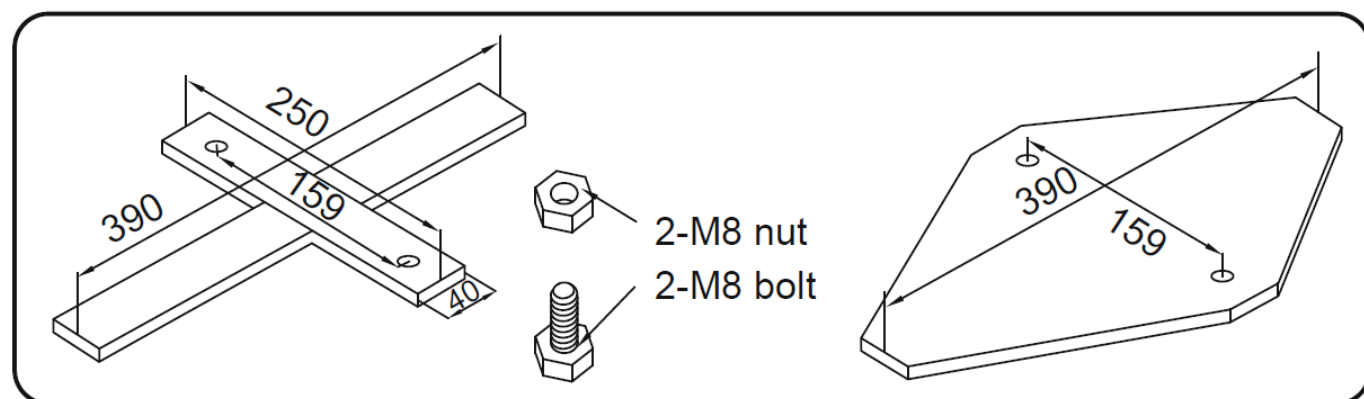
## SAVE THESE INSTRUCTIONS

## ATTACHING A BASE



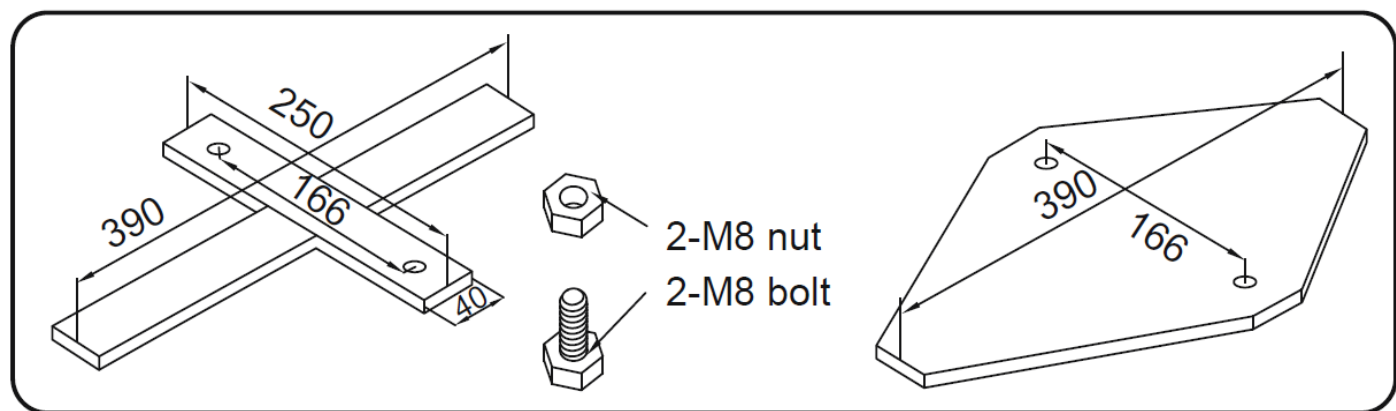
#### FOR 330GAL

EN60335-2-41 TEST standard requires the filter pump to be vertically fixed on the ground or a base made of wood or concrete before use. There should be two holes 9 mm in diameter on the base, the space between which should be 127 mm. Put filter pump on the base and attach them together by fastening the bolts and nuts. All the base parts should weigh at least over 18 kg to prevent the pump from accidentally falling.



#### FOR 530GAL

EN60335-2-41 TEST standard requires the filter pump to be vertically fixed on the ground or a base made of wood or concrete before use. There should be two holes 9 mm in diameter on the base, the space between which should be 159 mm. Put filter pump on the base and attach them together by fastening the bolts and nuts. All the base parts should weigh at least over 18 kg to prevent the pump from accidentally falling.



#### FOR 800GAL

EN60335-2-41 TEST standard requires the filter pump to be vertically fixed on the ground or a base made of wood or concrete before use. There should be two holes 9 mm in diameter on the base, the space between which should be 166 mm. Put filter pump on the base and attach them together by fastening the bolts and nuts. All the base parts should weigh at least over 18 kg to prevent the pump from accidentally falling.

## SETUP INSTRUCTIONS

### Choosing the Correct Location

Place the Filter Pump on a solid and level ground; it must be positioned on the same level as the base of the pool. If the Filter Pump is in an upper

or lower position than the base of the pool, the performance and life span of the Filter Pump can be compromised. The pool and the Filter Pump have to be positioned in an area with adequate drainage and easy access for maintenance operations. Never place the Filter Pump in a area that may accumulate water.

## Parts & Tools Needed

Compare the parts in your box to the parts listed in this manual.



Verify that the equipment components represent the model that you had intended to purchase. If any parts are damaged or missing at the time of purchase, visit our website [bestwaycorp.com/support](https://bestwaycorp.com/support).

## Assembly Instructions

For installation instructions, scan the QR code printed on the front cover or follow the illustrations inside the manual.




Drawings are for

illustration purposes only. May not reflect actual product. Not to scale.


Filter pump assembly can be completed without additional tools. Bestway is not responsible for damage caused to the pool due to mishandling or failure to follow these instructions.

**IMPORTANT:** It is imperative to check that the hydraulic connectors are not obstructed.

**IMPORTANT:** Do not dry run the filter pump. Make sure both the pool's inlet and outlet are open and fully covered by water. Before switching on the filter pump, perform the air discharging operation as shown .

**AIR DISCHARGING OPERATION:** Follow these steps to discharge air before switching the filter pump on and after every maintenance operation. Omitting this operation will greatly affect the lifespan of the product.

## MAINTENANCE INSTRUCTIONS

- For maintenance instructions, refer to the illustration steps inside the manual.  Drawings are for illustration purposes only. May not reflect actual product. Not to scale.
- Make sure that the filter pump is unplugged before any maintenance.
- To optimize the Filter Pump performance and for sanitary reasons, we suggest replacing the filter cartridge with a new one every two weeks.

## DISASSEMBLY & STORAGE INSTRUCTIONS

- Remove all accessories; be sure that Filter Pump, hoses and debris screens are completely clean and dry before the storage. If all the parts are not completely dry, mold may result.
- Before storage, remove and dispose of the filter cartridge.
- We strongly recommend disassembling the Filter Pump when the environment temperature is below 10°C / 50°F.
- Store the Filter Pump in a dry place with a moderate temperature between 10°C / 50°F and 38°C / 100°F.

## WARRANTY TERMS

- For support and product registration, please visit [bestwaycorp.com/support](https://bestwaycorp.com/support).