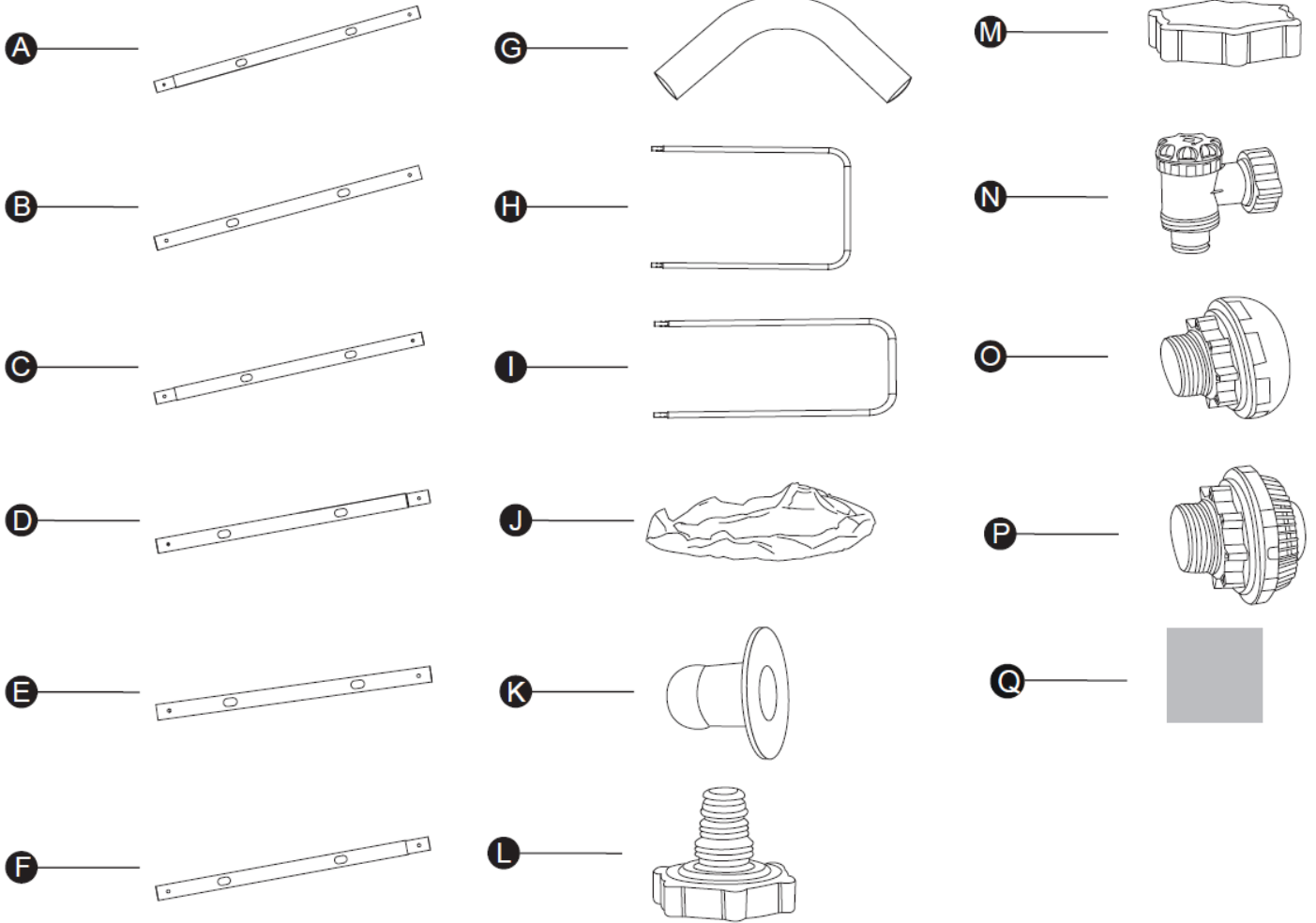


Above Ground Frame Rectangular Pool (U-supports) Manual



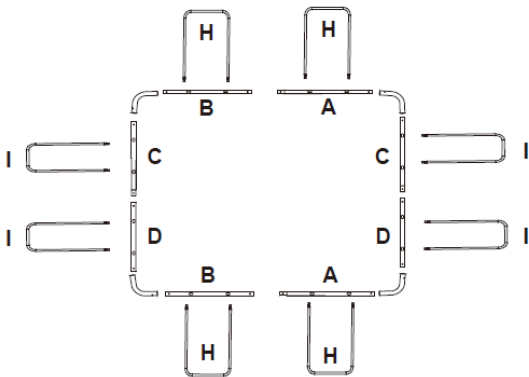
STEEL PRO MAX™	2.82 m x 1.96 m x 84 cm (9'3" x 6'5" x 33")	4.04 m x 2.01 m x 1.00 m (13'3" x 6'7" x 39.5")	4.12 m x 2.01 m x 1.22 m (13'6" x 6'7" x 48")	4.88 m x 2.44 m x 1.22 m (16' x 8' x 48")	5.49 m x 2.74 m x 1.22 m (18' x 9' x 48")	6.40 m x 2.74 m x 1.32 m (21' x 9' x 52")	
	56629 / 56631	56441 56442 56721 / 56727	56456 / 56457 56722 / 56728	56670 / 56671 /56672 561MB / 561MC	56465 / 56466 /56467	5612B	
A	x2	x2	x2	x2	x4	x6	
B	x2	x2	x2	x2	x2	x2	

C	x2	x2	x2	/	x2	x2	
D	x2	x2	x2	x2	x2	x2	
E	/	x2	x2	x2	x2	x2	
F	/	/	/	x4	/	/	
G	x4	x4	x4	x4	x4	x4	
H	x4	x6	x6	x12	x12	x14	
I	x4	x4	x4	/	/	/	
J	x1	x1	x1	x1	x1	x1	
K	x2	x2	x2	x2	/	/	
L	x1	x1	x1	x1	x1	x1	
M	x1	x1	x1	x1	x1	x1	
N	/	/	/	/	x2	x2	
O	/	/	/	/	x1	x1	
P	/	/	/	/	x1	x1	
Q	x4	x4	x4	x4	x4	x4	

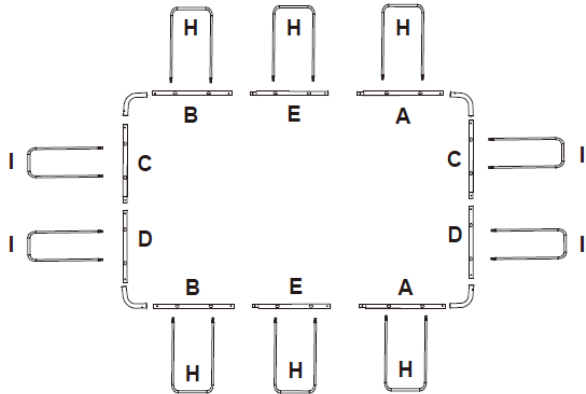
APX 365™	5.49 m x 2.74 m x 1.32 m (18' x 9' x 52")	7.32 m x 3.66 m x 1.32 m (24' x 12' x 52")	9.56 m x 4.88 m x 1.32 m (31'4" x 16' x 52")
	561KA 561MF	561KG 561KH	561KJ / 561KK
A	x4	x8	x12
B	x2	x2	x2
C	x2	x2	x2
D	x2	x2	x2
E	x2	x2	x2
F	/	x2	x4
G	x4	x4	x4
H	x12	x18	x24
I	/	/	/
J	x1	x1	x1
K	/	/	/

L	x1	x1	x1
M	x1	x1	x1
N	x2	x2	x2
O	x1	x1	x1
P	x1	x1	x1
Q	x4	x4	x4

2.82 m x 1.96 m x 84 cm (9'3" x 6'5" x 33")



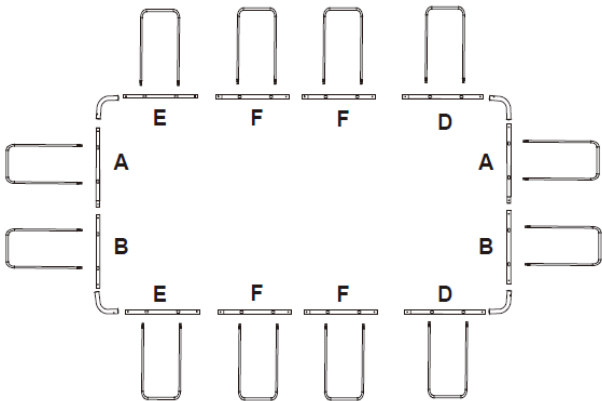
4.04 m x 2.01 m x 1.00 m (13'3" x 6'7" x 39.5")
4.12 m x 2.01 m x 1.22 m (13'6" x 6'7" x 48")



2.82 m x 1.96 m x 84 cm (9'3" x 6'5" x 33")

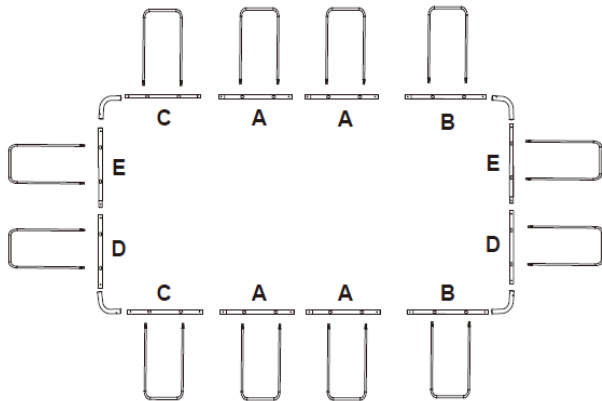
4.04 m x 2.01 m x 1.00 m (13'3" x 6'7" x 39.5")
4.12 m x 2.01 m x 1.22 m (13'6" x 6'7" x 48")

4.88 m x 2.44 m x 1.22 m (16' x 8' x 48")



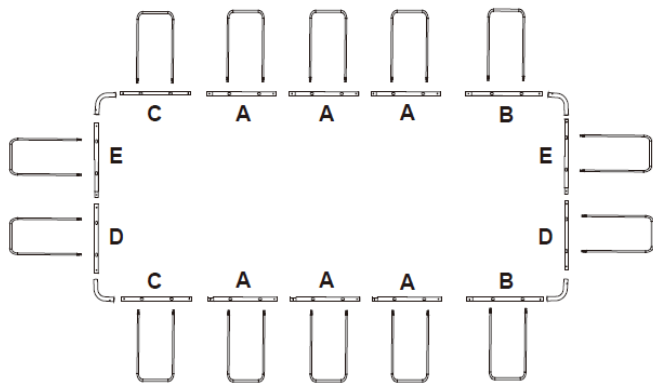
4.88 m x 2.44 m x 1.22 m (16' x 8' x 48")

5.49 m x 2.74 m x 1.22 m (18' x 9' x 48")
5.49 m x 2.74 m x 1.32 m (18' x 9' x 52")

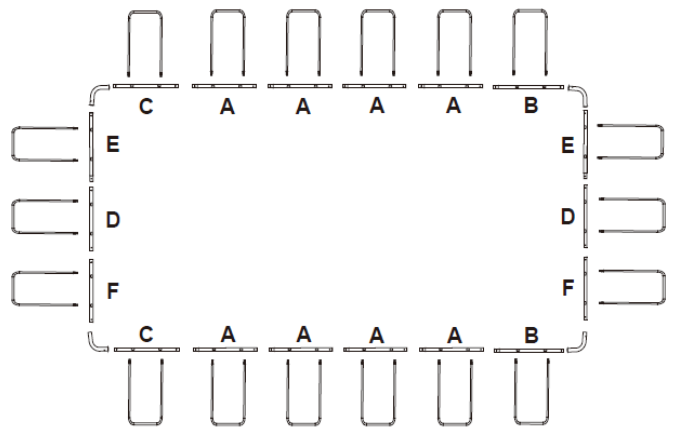


5.49 m x 2.74 m x 1.22 m (18' x 9' x 48")
5.49 m x 2.74 m x 1.32 m (18' x 9' x 52")

6.40 m x 2.74 m x 1.32 m (21' x 9' x 52")



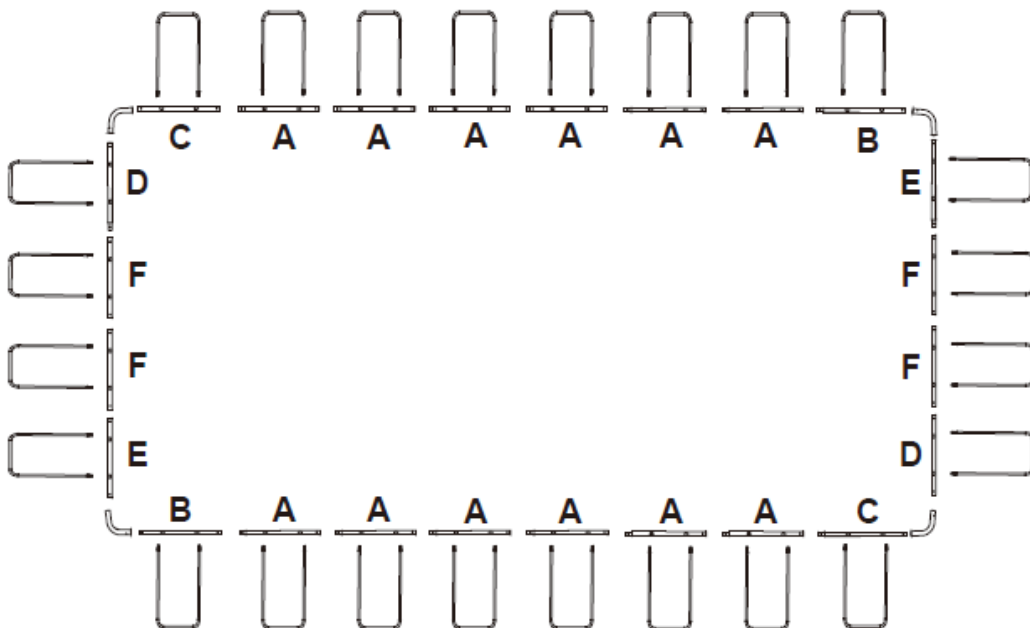
7.32 m x 3.66 m x 1.32 m (24' x 12' x 52")



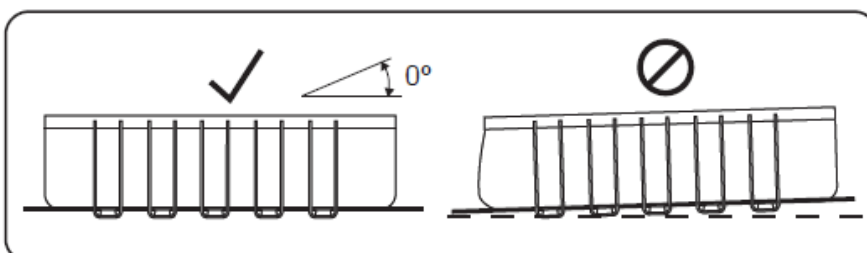
6.40 m x 2.74 m x 1.32 m (21' x 9' x 52")

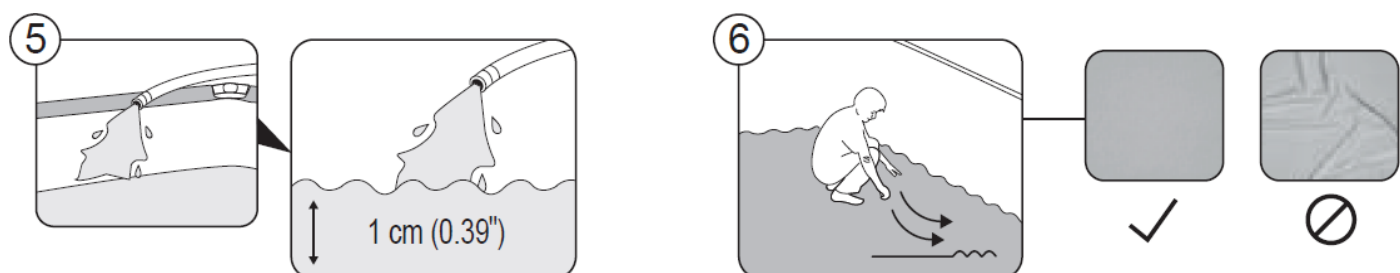
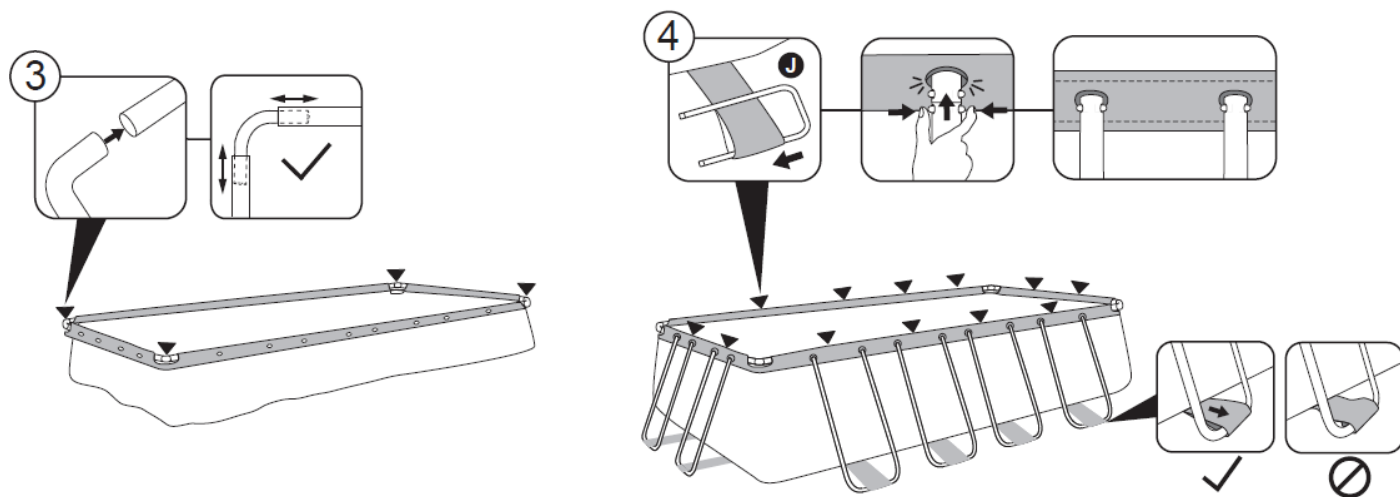
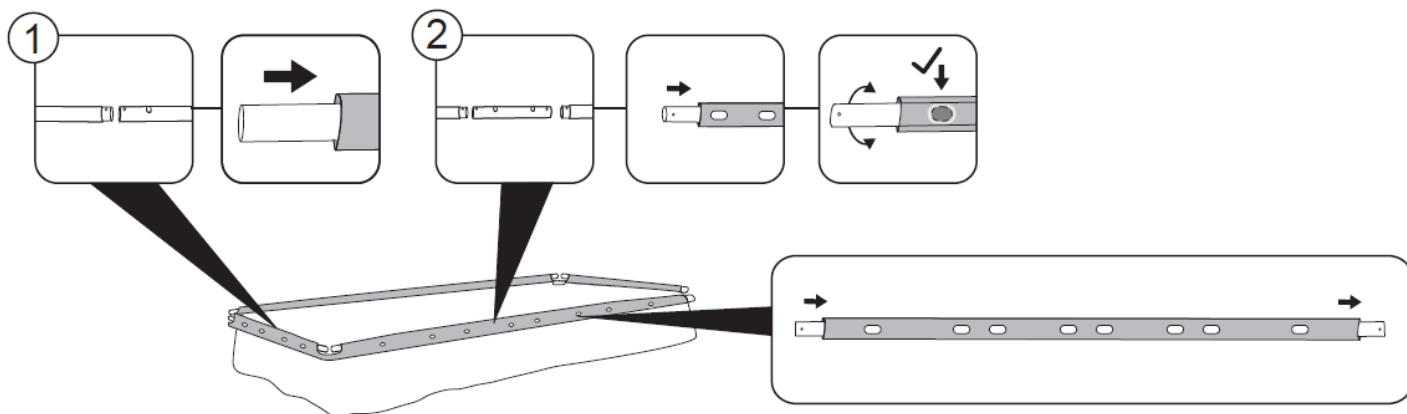
7.32 m x 3.66 m x 1.32 m (24' x 12' x 52")

9.56 m x 4.88 m x 1.32 m (31'4" x 16' x 52")



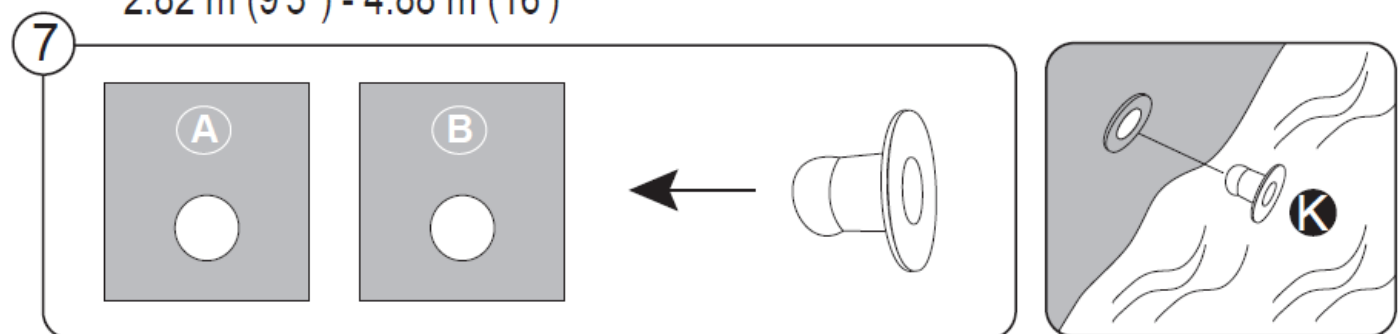
9.56 m x 4.88 m x 1.32 m (31'4" x 16' x 52")



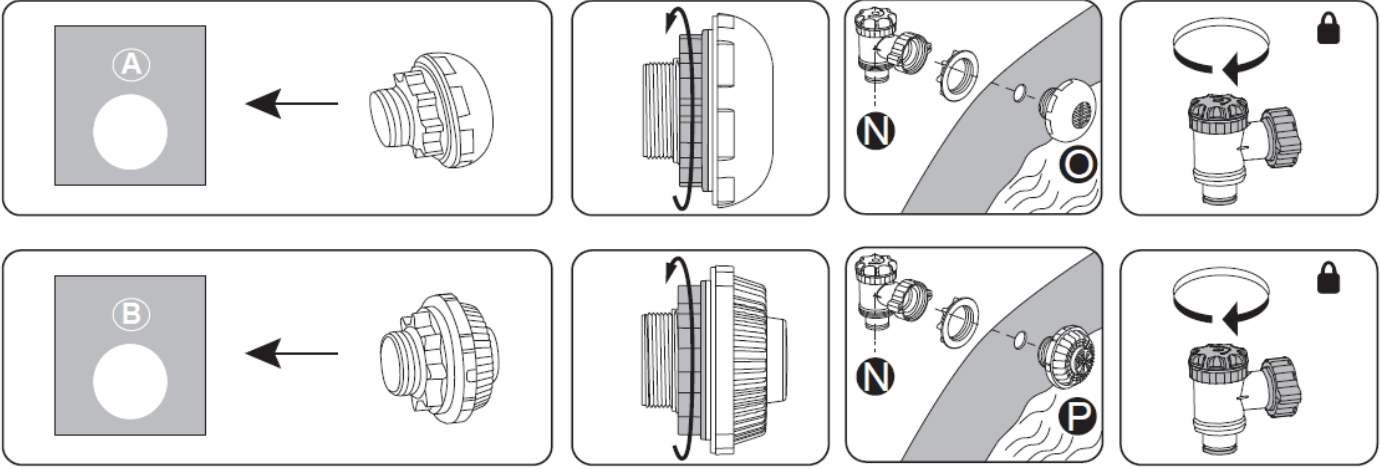


1 cm (0.39")

2.82 m (9'3") - 4.88 m (16')

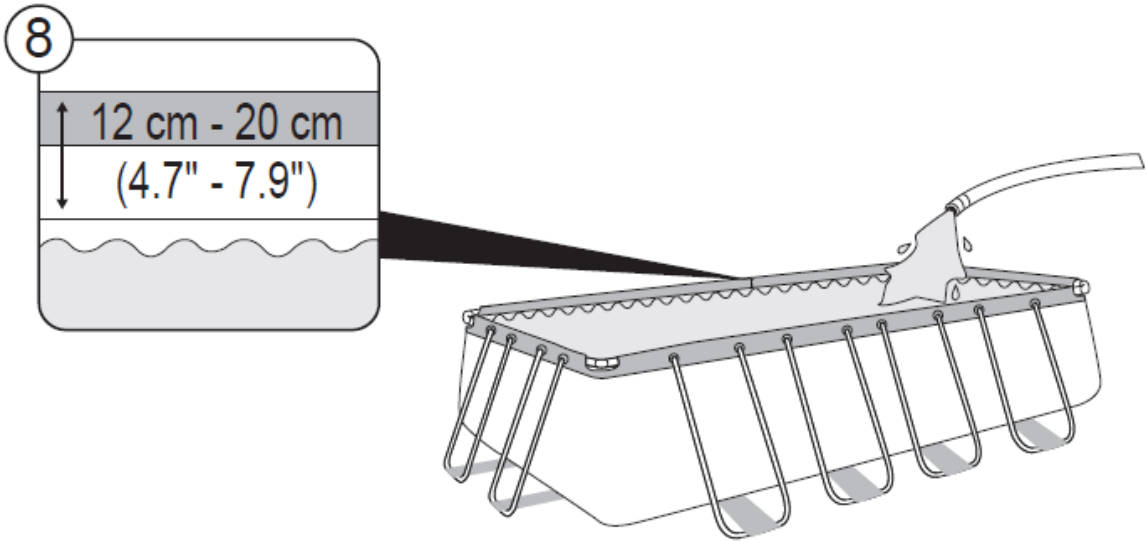


5.49 m (18') - 9.56 m (31' 4")



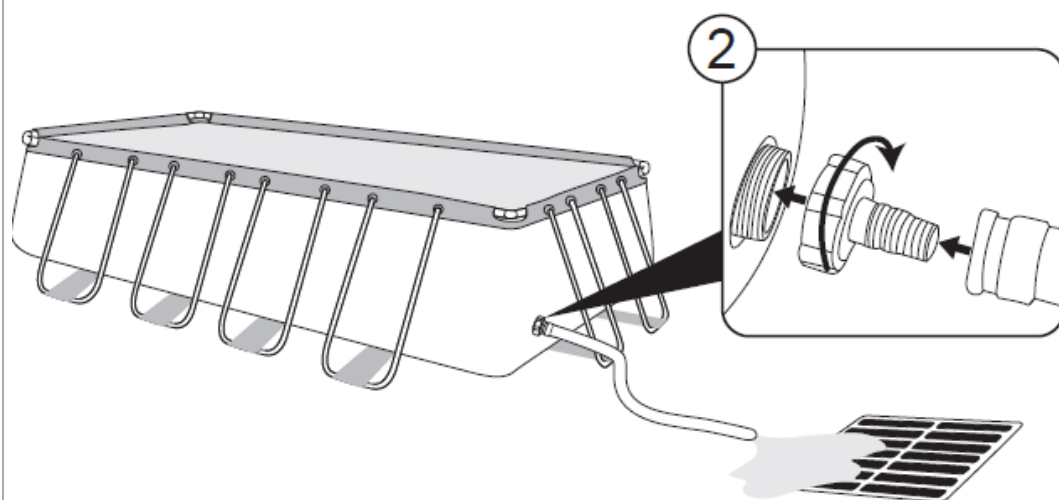
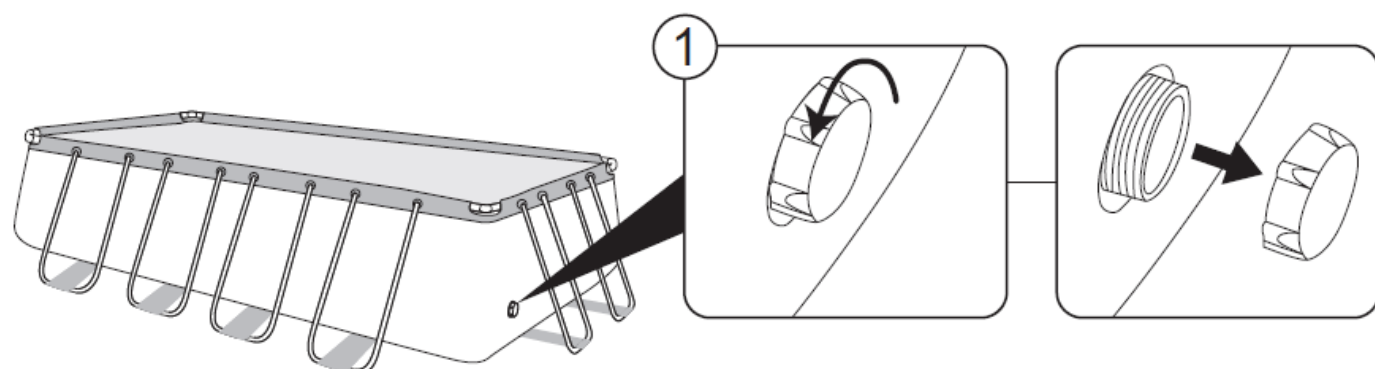
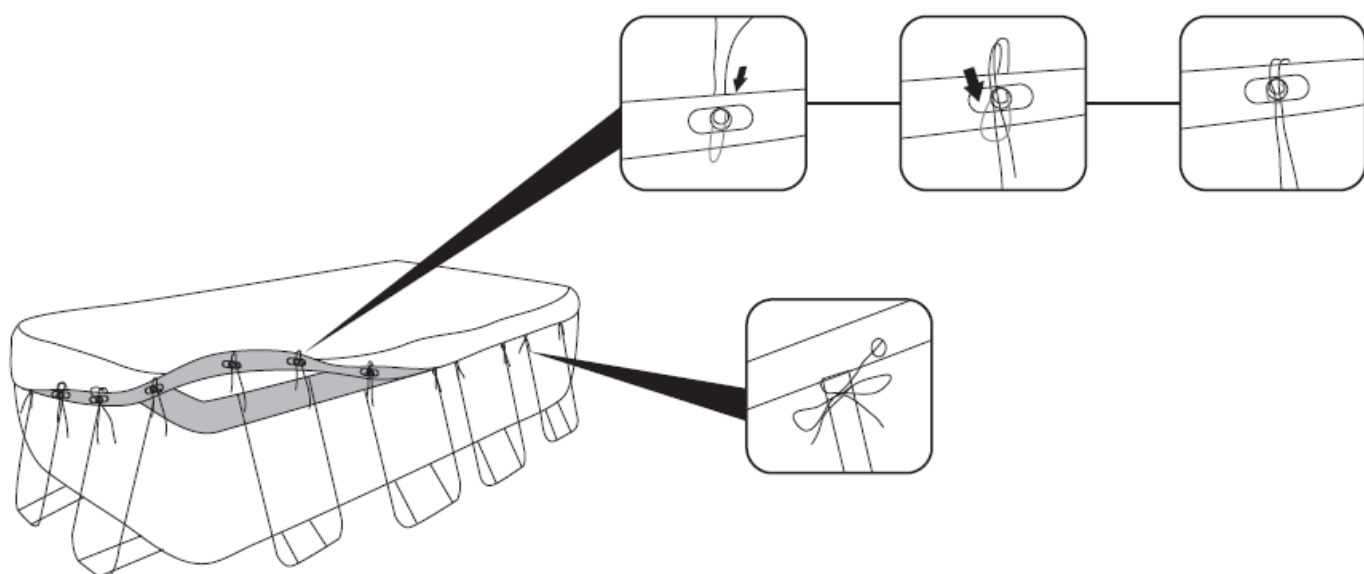
2.82 m (9'3") - 4.88 m (16')

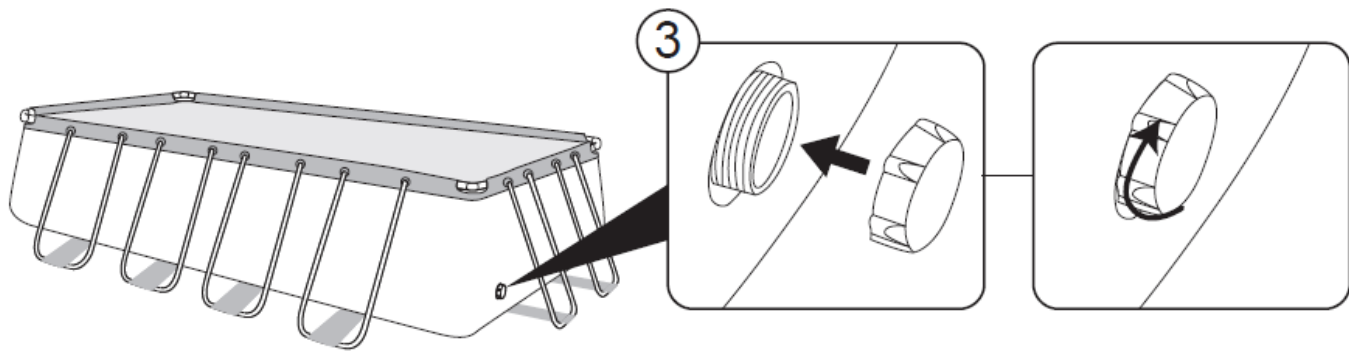
5.49 m (18') - 9.56 m (31' 4")



12 cm - 20 cm
(4.7" - 7.9")







SAFETY INFORMATION



WARNING

Save these instructions – Read carefully before operating.



Visit www.bestwaycorp.com/support for help

WE SUGGEST NOT TO RETURN THE PRODUCT TO THE STORE

QUESTIONS? PROBLEMS? MISSING PARTS?

For FAQ, Manuals, Videos Or Spare Parts, Please Visit bestwaycorp.com/support

Carefully read, understand and follow all information in this user manual before installing or using the swimming pool. These safety guidelines address some common risks of water recreation, but they cannot cover all risks and dangers in all cases. Always use caution, common sense and good judgment when enjoying any water activity.

Retain this information for future use. In addition, the following information can be supplied depending on the pool type.

- Keep these instructions in a safe place. If instructions are missing, please contact the manufacturer or search for them on our website, www.bestwaycorp.com.
- Designate a competent adult to supervise the pool each time it is being used.
- Barriers, pool covers, pool alarms or similar safety devices are helpful aids, but they are not substitutes for continuous and competent adult supervision.

Non Swimmers safety:

- Continuous, active, and vigilant supervision of weak swimmers and non-swimmers by a competent adult is required at all times (remembering that children under five are at the highest risk of drowning).
- Designate a competent adult to supervise the pool each time it is being used.
- Weak swimmers or non-swimmers should wear personal protection equipment when using the pool.
- When the pool is not in use, or unsupervised, remove all toys from the swimming pool and its surrounding to avoid attracting children to the pool.

Safe Pool Use:

- Encourage all users, especially children, to learn how to swim.

- Learn Basic Life Support, such as Cardiopulmonary Resuscitation (CPR), and refresh this knowledge regularly. This can make a life-saving difference in the event of an emergency.
- Instruct all pool users, including children, what to do in case of an emergency.
- Never dive into any shallow body of water. This can lead to serious injury or death.
- Do not use the swimming pool when using alcohol or medication that may impair your ability to safely use the pool.

Safety Devices & Equipment:

- To prevent children from drowning, it is recommended to secure access to the pool with a protection device.
- To prevent children from climbing from the inlet and outlet valve, it is recommended to install a barrier (and secure all doors and windows, where applicable) to prevent unauthorized access to the swimming pool.
- It is recommended to keep rescue equipment (ex. a ring buoy) by the pool.
- Keep a working phone and a list of emergency phone numbers near the pool.
- When a pool cover is being used, remove it completely from the water surface before entering the pool.
- Protect pool occupants from water related illnesses by keeping the pool water treated and by practicing good hygiene. Consult the water treatment guidelines in the user's manual.
- Store chemicals (ex. water treatment, cleaning or disinfection products) out of the reach of children.
- Use the signage outlined below. Signage is to be displayed in a prominent position within 2.00 m of the pool.



- Keep children under supervision in the aquatic environment. No diving.
- Removable ladders shall be placed on a solid, horizontal surface.
- Regardless of materials used for swimming pool construction, regularly inspect surfaces under the pool and its equipment for any safety hazards.
- Regularly monitor bolts and screws. Remove splinters or any sharp edges to avoid injuries.
- Do not leave the drained pool outside. The empty pool may become deformed and/or displaced due to wind.
- If you have a filter pump, refer to the pump's manual for instructions. Do not use the pump if people are inside the pool.
- If you have a ladder, refer to the ladder's manual for instructions.

WARNING!

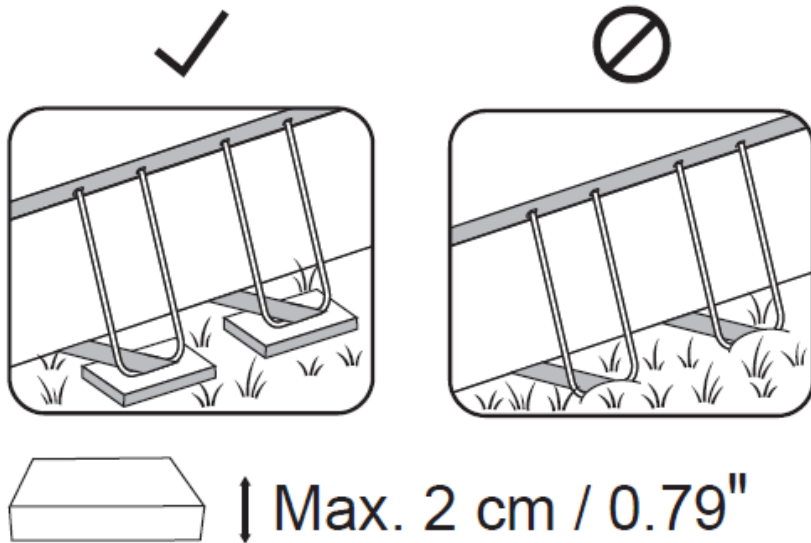
The use of a swimming pool implies compliance with the safety instructions described in the operating and maintenance guide.

In order to prevent drowning or other serious injuries, pay particular attention to the possibility of unexpected access to the swimming pool by children under 5 years by securing the access to it and keeping them under constant adult supervision while in the pool.

Please read carefully and keep for future reference.

SETUP INSTRUCTIONS

Overview



Max. 2 cm / 0.79"

Choosing the Correct Location:

The location chosen where the pool will be installed must respect the following conditions:

- Because of the combined weight of the water inside the pool and the users, it is extremely important that the surface chosen is capable of uniformly supporting the total weight for the entire time the pool is installed. When choosing the surface, take into consideration that water may come out of the pool when in use or when it rains. If the water softens the surface, it may lose its capability to support the pool weight.
- Check the position of the vertical legs and/or the U-supports regularly. They must always be level with the bottom of the pool. If the vertical leg or the U-support starts to sink into the ground, drain the pool water immediately to avoid the pool collapsing due to the uneven load on the frame structure. Change the location of the pool or modify the surface material.
- The surface must be flat and smooth. If the surface is inclined or uneven, it can create an unbalanced load on the structure of the pool. This can damage the welding points of the liner and bend the frame. In the worst cases, the pool can collapse, causing serious personal injury and/or damage to personal property.
- We recommend positioning the pool away from any objects children could use to climb into the pool.
- Position the pool near an adequate drainage system to deal with overflow or to empty the pool. Ensure the pool side with the **water inlet A and outlet B** is facing in the direction of the power source, where the filtration system will be connected.
- The selected surface must be clear of any type of object. Due to the weight of the water, any object under the pool could damage or perforate the bottom of the pool.
- The selected surface must be clear of aggressive plants and weed species. Types of strong vegetation could grow through the liner and create water leakage. Grass or other vegetation that may cause odor or slime to develop must be eliminated from the chosen location.
- The selected location must not have overhead power lines or trees. Be sure the location does not contain underground utility pipes, lines or cables of any kind.
- The selected position must be far from house entrance. Do not position any equipment or other furniture around the pool. The water that comes out of the pool during use or due to product malfunctions can damage furniture inside the house or surrounding the pool.
- The selected surface must be flat and without holes that can damage the material of the liner.

Suggested surfaces: grass, ground, concrete and all other surfaces that respect the above set-up conditions.

Surfaces to avoid: mud, sand, gravel, deck, balcony, driveway, platform, soft/loose soil or other surface that does not meet the above set-up conditions.

Follow the important instructions above to choose the correct surface and location to set up your pool. If parts become damaged because the set-up surface and location does not adhere to these instructions, it will not be considered a manufacturer defect and will void the warranty and any service claims.


If the selected surface is too soft to hold the frame, install wood or metal plates with a thickness of no bigger than 2 cm (0.79") under the legs. The plates must not touch the liner or have a sharp area, as this can cause damage and will not be covered under the manufacturer's warranty.

Additional Guidelines:

Check with your local city council for bylaws relating to fencing, barriers, lighting and safety requirements, and ensure you comply with all laws. If a pump and/or ladder is included in the set, refer to the pump's and/or ladder's manual for safety instructions and installation. The ladder must match the pool size.


If you must change locations during set-up, lift the liner to move it; do not drag it on the ground. The friction between the PVC material and the ground can damage the pool liner.

Parts & Tools Needed

Compare the parts in your box to the parts listed in this manual. 

Verify that the equipment components represent the model that you had intended to purchase. If any parts are damaged or missing at the time of purchase, visit our website bestwaycorp.com/support.

Assembly Instructions

For installation instructions, scan the QR code printed on the front cover or follow the illustrations inside the manual.  Drawings are for illustration purposes only. May not reflect actual product. Not to scale.

Assembly of this pool can be completed without additional tools. Installation takes approximately 30-90 minutes with 2-3 people, excluding any preparations or water filling (refer to the package for specific information about your purchased item). Please note that assembly times may vary based on pool size and individual experience.

Bestway is not responsible for damage caused to the pool due to mishandling or failure to follow these instructions.

Helpful Installation Tips:

We strongly suggest opening the package and assembling the pool when the ambient temperature is above 15°C / 59°F. The PVC material of the liner will be more flexible and easier to assemble in this environment.

We suggest you buy a pool ladder (if one is not included in the set) and prepare it before setting up the pool, as it will help whenever you need to get inside it.

Step 4: Fully extend the support sleeves on the bottom of the liner to ensure the correct positioning of the U supports.

Step 5: When the pool is filled with around 1 cm (0.39") of water, gently smooth out the bottom liner to remove all folds. We recommend starting from the center of the pool and continuing outwards. You can continue to fill the pool when the floor is smooth and wrinkle-free.

Step 7: If the connection valve for the pool's inlet A and outlet B is composed of Part N and Part O / P:

1. Unscrew the gear from Part O / P.
2. Insert the smaller end of Part O / P through the inlet from the inside of the pool.
3. Tighten the gear from the outside of the pool to attach Part O / P to the liner.
4. Screw Part N onto Part O / P and close the water valve in the locked position to complete the connection.

Filling the Pool with Water:

ATTENTION: Do not leave the pool unattended while filling with water. Continuously check the pool to ensure it is being filled correctly. Ensure that the belt of the U-Support is completely extended.

It is highly recommended to use tap water for filling to minimize unwanted content, such as minerals. Do not use sea water.

Fill the pool with water after all assembly steps are completed and until the water reaches the welding line, which corresponds to 90% of the full capacity. Do not overfill as this could cause the pool to collapse. In the case of heavy rainfall, we strongly recommend reducing the water level to keep it at 90% capacity and avoid the overflow of water.

IMPORTANT: When the pool is 90% full, check that the distance between the water surface and the top of the rails is the same all around. If it is different, it means that the surface is not level, and we strongly recommend draining the water and adjusting the chosen location. Never attempt to move the pool with water still in it.

IMPORTANT: Keeping the pool full of water on unlevel ground can cause the bursting of welding points and/or pool collapse, causing serious personal injury and/or damage to property. Your pool may contain a great deal of pressure. If your pool has a bulge or uneven side, the sides may burst, suddenly releasing water and causing serious personal injury and/or damage to property. When the pool is 90% full, check the pool for any leaks at the valves or seams and for any evident water loss. Do not add any chemicals to the water until this has been done.

MAINTENANCE INSTRUCTIONS

Keeping your pool water clean and chemically balanced is necessary. Simply using the filtration system and cleaning the filter cartridge is not enough for proper maintenance of the water.

It is important to prioritize the maintenance and health of your pool water. If you do not adhere to these guidelines, your and your family's health might be at risk.

Water Maintenance:

We recommend you use pool chemicals to maintain water chemistry and chlorine or bromine tablets (do not use granules) with a chemical dispenser.

The chemical maintenance with chemical tablets must be performed with a chemical dispenser or chemical floater. Do not throw chemical products directly into the water. The chemicals will settle on the bottom of the pool and damage and discolor the liner. In the worst cases, it will damage the structure of the pool liner.

Pool damage resulting from the misuse, number of users and overall mismanagement of pool water is not covered by the warranty.

Water quality is directly related to frequency of use, number of users and overall maintenance of the pool. The water should be changed every 3 days if there is no chemical treatment being performed with the water. We recommend that you take a shower before using your pool, as cosmetic products, lotions and other residues on the skin can quickly degrade water quality. Place a bucket of water next to the pool to clean users' feet

before they enter the water.

Use a pool skimmer for the surface and a vacuum cleaner for the pool bottom regularly to avoid settled dirt. If they are not included in the set, you can purchase them by visiting our website (www.bestwaycorp.com) or by visiting the nearest pool supply store.

Chemical Usage:

Your pool set may not include a chemical dispenser. In this case, you can purchase one by visiting our website (www.bestwaycorp.com) or by visiting the nearest pool supply store. Remove the chemical dispenser when the pool is in use. After performing chemical maintenance and before using the pool, use a test kit (not included) to test the water chemistry. We recommend maintaining your water's chemical balance as shown in the table below.

Exceeding the following parameters can damage the structure of the liner and create a dangerous situation for the users.

Parameters	Values
Water clarity	clear view of the pool bottom
Colour of the water	no colour should be observed
Turbidity in FNU/NTU	max. 1,5 (preferably less than 0,5)
Nitrate concentration above that of fill water in mg/l	max. 20
Total organic carbon (TOC) in mg/l	max. 4,0
Redox potential against Ag/AgCl 3,5 m KCl in mV	min. 650
pH value	6,8 to 7,6
Free active chlorine (without cyanuric acid) in mg/l	0,3 to 1,5
Free chlorine used in combination with cyanuric acid in mg/l	1,0 to 3,0
Cyanuric acid in mg/l	max. 100
Combined chlorine in mg/l	max. 0,5 (preferably close to 0,0 mg/l)

Please consult your local pool or chemical supply retailer for more information about chemical maintenance. Pay close attention to the chemical manufacturer's instructions.

Winterization (for APX 365™ pools only)

Polar-Shield™ year-round weather defense allows the pool to stay up during wintertime without completely emptying the pool water. Make sure the filtration system and other pool accessories are disconnected from the pool. Use the pool cover throughout the winter season to prevent debris from falling into the pool.

When the outdoor temperature is around 0°C (32°F) or below, there is a risk that the water will freeze. Before installing the pool cover:

1. Ensure the water level is at least 10 cm (3.9") lower than the pool outlet B. If the water level is above the pool inlet A and outlet B, water may freeze inside, irreparably damaging the liner when the ice expands. It will not be considered a manufacture defect and will void the warranty and any service claims.
2. Place an inflatable item made of cold-resistant material, such as a pool pillow (not included), on the surface of the water to compensate for the space between the water level and the top rails. This will ensure the pool cover is supported.

IMPORTANT TIPS:

If there is ice in the pool water, remove it very carefully. The sharp edges of the ice can break and damage the pool liner.
If it rains, check the water level to ensure it is 10 cm (3.9") lower than the pool outlet B, especially if the outdoor temperature is around 0°C (32°F) or below and the water may freeze.

Ongoing Pool Maintenance:

For liner maintenance, refer to the illustration steps inside the manual.



We suggest that you buy a pool cover, if one is not included in the set, and cover the pool when not in use to prevent damage to the top rail material. Gently clean any dirt from the top rails with a clean cloth. In the event of a leak, patch your pool using the underwater adhesive repair patch provided. You can find the instructions in the FAQs on the support section of our website (www.bestwaycorp.com/support).

Accessory Attachments:

If a pump and/or ladder is included in the set, refer to the pump's and/or ladder's manual for safety instructions and installation. The ladder must match the pool size.
If your pool has a connection valve for attaching pool cleaning accessories, you must remove the debris screen from the connector prior to accessory attachment.

DISASSEMBLY & STORAGE INSTRUCTIONS

Draining:

For draining, refer to the illustration steps inside the manual.



Drawings are for illustration purposes only. May not reflect actual product. Not

to scale.

Before draining your pool water, make sure that you are draining your pool away from the house and any objects that are subject to water damage. Check local regulations for drainage bylaws.

Cleaning:

1. Rinse the pool liner with tap water to remove any residue left by chemicals or debris.
2. Leave the flattened liner in the sunlight until it's completely dry.
3. To remove the remaining water completely, wipe the pool liner with a dry cloth.

Storage:

Remove all accessories. Be sure that pool liner and accessories are completely clean and dry before storage. If the pool is not completely dry, mold may result and will damage the pool liner during the storage period.

Once the pool is completely dry, sprinkle with talcum powder to prevent the liner from sticking together.

We strongly recommend disassembling the pool when the ambient temperature is above 15°C / 59°F.

Fold the pool liner only if the ambient temperature is above 15°C / 59°F. Store the pool in a dry place with a moderate temperature between 15°C / 59°F and 38°C / 100°F and keep the pool liner and all accessories inside a cardboard box to better protect the PVC material during the winter period.

WARRANTY TERMS

For support and product registration, please visit bestwaycorp.com/support.