

Manual ID

2024M-00179

## 950 gal. / 3596 L Sand Filter Manual

# OWNER'S MANUAL

## 58515 Hmax 1.5 m Sand Filter



Visit the Bestway YouTube channel



Visit [www.bestwaycorp.com/support](http://www.bestwaycorp.com/support) for help

WE SUGGEST NOT TO RETURN THE PRODUCT TO THE STORE

QUESTIONS? PROBLEMS? MISSING PARTS?

For FAQ, Manuals, Videos Or Spare Parts, Please Visit [bestwaycorp.com/support](http://bestwaycorp.com/support)

## SAFETY INFORMATION

### WARNING

### IMPORTANT SAFETY INSTRUCTIONS - READ AND FOLLOW ALL SAFETY INSTRUCTIONS - SAVE THESE INSTRUCTIONS

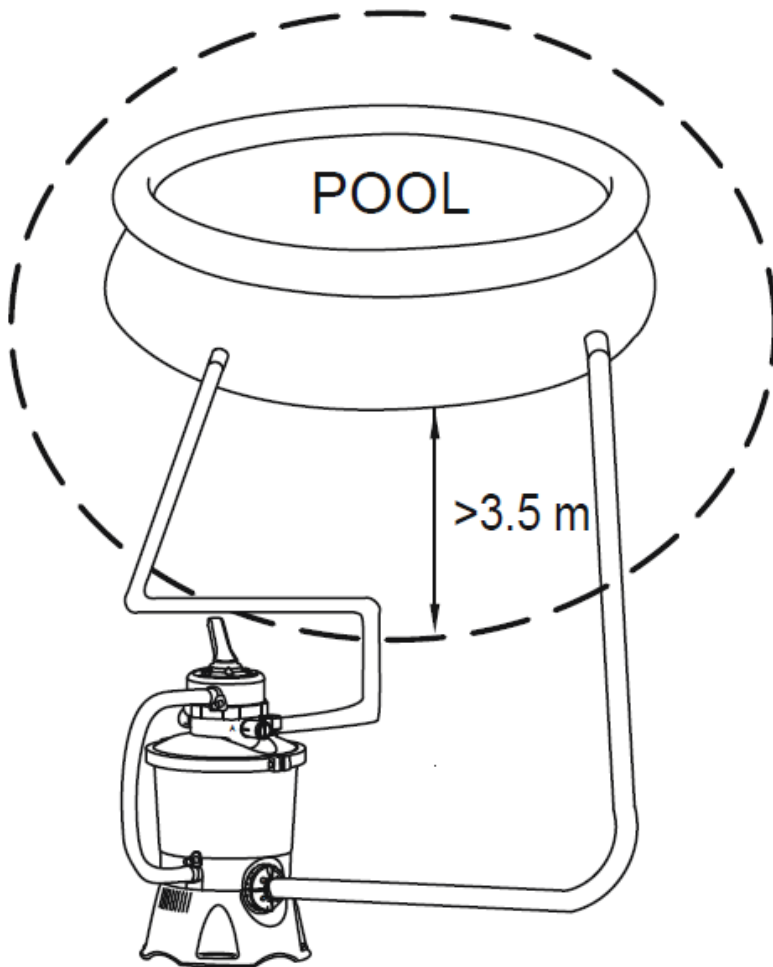
When installing and using this electrical equipment, basic safety precautions should always be followed, including the following:

- The pump is to be supplied by an isolating transformer or supplied through a residual current device (RCD) having a rated residual operating current not exceeding 30 mA.
- The power source on the wall of building should keep more than 4m away from pool.
- The appliance must be supplied by earthed power source.
- **RISK OF ELECTRIC SHOCK** - The pump cannot be using while people are inside the pool. Forbid access of the pool in case of damage of the sand filter.
- **DO NOT BURY CORD.** Locate cord to minimize abuse from lawn mowers, hedge trimmers, and other equipment.
- To reduce the risk of electric shock, replace damaged cord immediately.
- If the supply cord is damaged, it must be replaced by the manufacturer, its service agent or similarly qualified persons in order to avoid a hazard.
- Extension cords can't be used.
- Risk of electric shock. Using the sand filter with an unmatched electrical supply is dangerous and will permanently damage the sand filter.

- Do not remove the grounding prong or modify the plug in anyway. Do not use adaptor plugs. Consult a qualified electrician for any questions relating to validity of your plugs or grounding.
- Handle the sand filter with care. Do not pull or carry the sand filter by the power cord. Never pull a plug from the outlet by yanking the power cord. Keep cord free from abrasions. Sharp objects, oil, moving parts, and heat should never be exposed to the sand filter.
- Always unplug this product from the electrical outlet before removing, cleaning, servicing or making any adjustment to the product.
- Don't plug or unplug the appliance if hand is wet.
- Always unplug the appliance:
  - On raining days
  - Before cleaning or other maintenance
  - Leave it unattended on holidays
- When the appliance will be not used for long time, such as in the winter, the pool set should be disassembled and stored indoor.  
**CAUTION:** Read the instruction before using the appliance and installation/reassembly every time.
- Safe-keeping the instruction. For reconstruction the pool set every time, please always refer to the instructions.
- If instruction is missed, please contact with Bestway or search it in website: [www.bestwaycorp.com](http://www.bestwaycorp.com)
- Electric installations should follow national wiring rules. Consult a qualified electrician for any questions.  
**CAUTION:** This sand filter is for use with storable pools only. Do not use with permanently-installed pools. A storable pool is constructed so that it is capable of being readily disassembled for storage and reassembled to its original integrity. A permanently-installed pool is constructed in or on the ground or in a building such that it cannot be readily disassembled for storage.
- Always disconnect the appliance from the supply before assembling, disassembling or cleaning.
- Appliances can be used by persons with reduced physical, sensory or mental capabilities or lack of experience and knowledge if they have been given supervision or instruction concerning use of the appliance in a safe way and if they understand the hazards involved.
- Children shall not play with the appliance.
- Pumps without indication that they are protected against the effect of freezing shall not be left outside during freezing weather conditions.
- Cleaning and user maintenance must be performed by an adult above 18 years old who is familiar with the risk of electric shock.

#### NOTES:

- Place the sand filter on solid, level ground. Ensure the sand filter is at least 3.5 meters away from poolside. Keep distance as far as possible.
- Pay attention to position pool and sand filter so adequate ventilation, drainage, and access for maintenance is available. Never place the sand filter in an area that may accumulate water, or on a walking path with lots of foot traffic.



- It is necessary to have the plug accessible after installation of the pool. The plug of the sand filter shall be at least 3.5m away from the pool.
- Atmospheric conditions may affect the performance and life span of the sand filter; take adequate precautions to protect the sand filter from unnecessary wear and tear that may occur during periods of cold or hot weather and/or exposure to sun.
- Please examine and verify all sand filter components are present before use. Notify Bestway at the customer service address listed on this manual for any damaged or missing parts at the time of purchase.
- It is imperative to change as soon as possible all deteriorated parts. Only use parts approved by the manufacturer.
- Do not allow children or adults to lean or sit on the apparatus.
- Do not add chemicals to the sand filter.
- When chemical products are used to clean the pool water, it is recommended to respect a minimum filtration time to preserve the health of swimmers which depends on compliance of health regulation.
- Only the media provided or specified by the manufacturer is to be used with product installation.
- It is essential to check that the suction openings are not obstructed.
- It is advisable to stop the filtration during maintenance operations on the filtration system.
- Regularly monitor the filter clogging level.
- A weekly check is recommended for backwashing or cleaning. Minimum daily filtration operating time of 8 hours is recommended to ensure clear pool water.
- It is essential to change any damaged element or set of elements as soon as possible. Use only parts approved by person responsible for placing the product on the market.
- All filters and filter media shall be inspected regularly to ensure that there is not a build-up of detritus thus preventing good filtration. The disposal of any used filter media should also be in accordance with applicable regulations/legislation.
- Mind all the safety requirements and recommendations described in the manual. In case of doubt on the pump or any circulation devices, contact a qualified installer, or the manufacturer/importer/distributor. The water circulation installation shall comply with the European as well as national/local regulations, especially when dealing with electrical issues. Any change of valve position, pump size, grille size can cause a change of the flow and the suction velocity can be increased.
- This product is not intended for commercial use.

**PLEASE READ THE INSTRUCTION MANUAL CAREFULLY AND KEEP IT FOR FUTURE REFERENCE.  
SAVE THESE INSTRUCTIONS**

DISPOSAL



Electrical products should not be disposed of with household waste. Please recycle where facilities exist. Check with your local authority or retailer for recycling advice.

TECHNICAL SAFETY INSTRUCTIONS

RCD WARNING

**WARNING:** Before inserting plug into a power outlet, make sure the current rate of the power outlet is suitable for the sand filter.

**WARNING:** Using an extension lead or multi-plug adaptor with the sand filter can cause the plug to overheat, causing damage to the equipment and surrounding items. The sand filter is a class I electrical appliance and must be connected directly to a grounded socket. It is recommended to use only a socket resistant to humidity and capable of high-power loading. Regularly check the plug and socket for signs of damage before using the sand filter - do not use the sand filter if the plug or socket is damaged. If you are unsure about the quality of the electrical supply, please consult a qualified electrician before use.

**WARNING:** The RCD plug must be tested before each use to avoid the risk of electric shock.

**WARNING:** Do not use the sand filter if this test fails. For assistance, please visit the support section on our website, [www.bestwaycorp.com](http://www.bestwaycorp.com).

PRODUCT DESCRIPTIONS

	Filter Diameter:	270 mm
	Effective Filter Area:	0.059 m² (0.635 ft²)
	Max. Operating Pressure:	0.42 Bar (6 PSI)
	Working sand filter pressure:	<0.25 Bar (3.5 PSI)
	Max. Water Temperature:	35°C (95°F)
	Use with:	#20 silica Sand (0.45-0.85 mm) / Polysphere™ Pool Filtration Balls
	#20 silica Sand (0.45-0.85 mm) Capacity:	Approximately 8.5 kg (18.7 lbs)
	Polysphere™ Pool Filtration Balls Capacity:	Approximately 240 g (0.53 lbs)
	<b>NOTE:</b> If #20 silica Sand (0.45-0.85 mm) / Polysphere™ Pool Filtration Balls is not included in the set, please visit the website <a href="http://www.bestwaycorp.com">www.bestwaycorp.com</a> .	

PARTS & TOOLS NEEDED



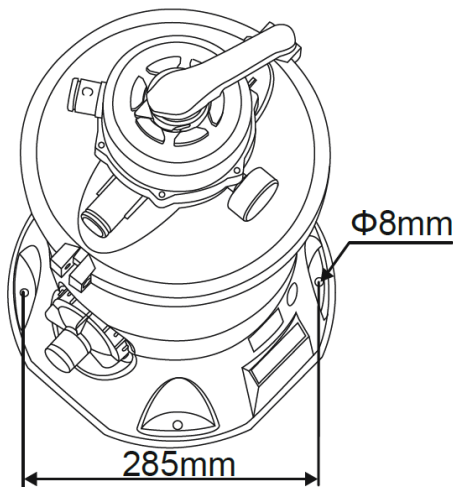
Compare the parts in your box to the parts listed in this manual. Verify that the equipment components represent the model that you had intended to purchase. If any parts are damaged or missing at the time of purchase, visit our website [bestwaycorp.com/support](http://bestwaycorp.com/support).

Before assembling the sand filter, take a few minutes to become familiar with all the sand filter parts.

You will need a screwdriver (not included). 


## SETUP INSTRUCTIONS

### Overview




1. The sand filter should be placed on solid, level ground, preferably a concrete slab. Position the sand filter so the Ports and Control Valve are accessible for operation, servicing and winterizing.
2. EN60335-2-41 TEST standard requires the sand filter to be vertically fixed on ground or a certain pedestal made of wood or concrete before use to prevent the sand filter from accidentally falling. Fully assembled sand filter will exceed 18 kg. The mounting holes should be 8 mm in diameter and spaced 285 mm apart. Use two bolts and nuts with a maximum of 8 mm in diameter to fasten the sand filter to the pedestal.

### Assembly Instructions

For installation instructions, scan the QR code printed on the front cover or follow the illustrations inside the manual.  Drawings are for illustration purposes only. May not reflect actual product. Not to scale. Bestway is not responsible for damage caused to the product due to mishandling or failure to follow these instructions.

### Helpful Installation Tips:

**IMPORTANT:** Do not dry run the sand filter. Make sure both the pool's inlet and outlet are open and fully covered by water. Before switching on the sand filter, perform the air discharging operation as shown. 

**AIR DISCHARGING OPERATION:** Follow these steps to discharge air before switching the sand filter on and after every maintenance operation. Omitting this operation will greatly affect the lifespan of the product.

**NOTE:** It is important to repeat this operation every time you start the pump after winterizing, any maintenance and backwashing the sand bed.

**IMPORTANT:** Do not place chlorine in the strainer to avoid damaging the sand filter.

If you do not use the recommended size of filtration sand, filtering performance will be reduced and the sand filter may be damaged, thereby voiding warranty.

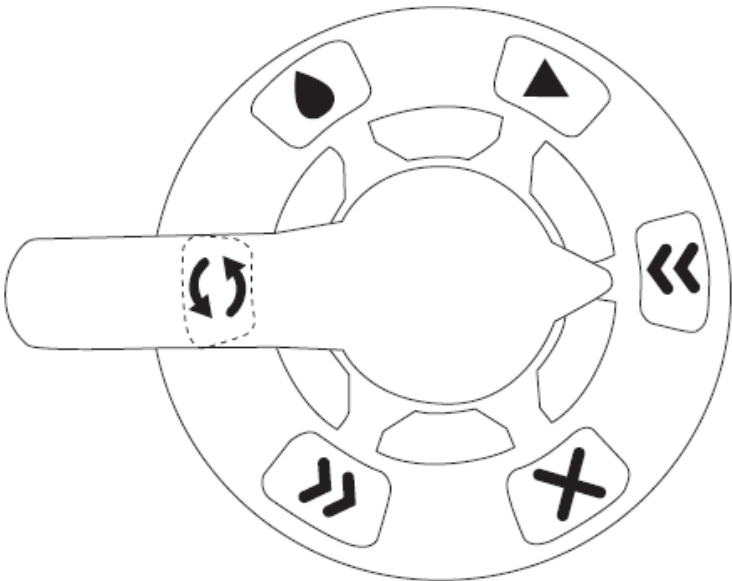
**IMPORTANT:** Some small debris can pass through the sand and back into the pool. This is normal, especially if the debris is fine or silt. To limit this, it is better to follow the maintenance instructions, and backwash and rinse when necessary.

When you are vacuuming the bottom of the pool that has a large amount of debris, we suggest backwashing the sand when you finish cleaning half of the pool.

Before switching on, please read the manual carefully.

# USAGE INSTRUCTIONS

## CONTROL VALVE



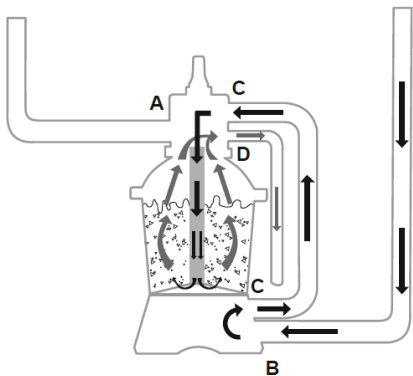
Press down on the control valve handle and rotate to desired function. To prevent equipment damage , always switch the sand filter off before changing the control valve function.

Do not set the control valve between two functions, or it will lead to water flow out from the port D .

Do not switch on or operate the sand filter with the control valve set to the closed function or it will increase the inner pressure and seriously damage the sand filter.

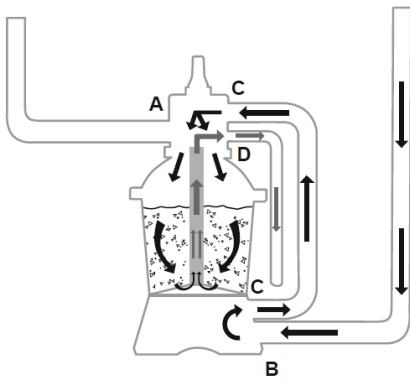
### Backwash

This function is used to clean the sand bed; water is pumped down through the Collector Hub, upwards through the sand bed, and deposited out of Port D.



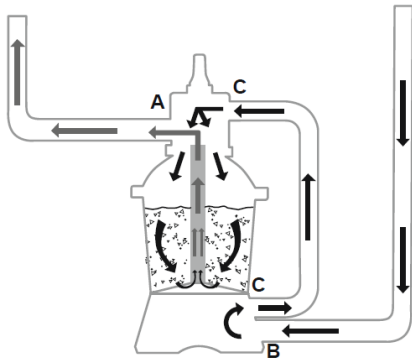
### Rinse

This function for initial startup, cleaning, and sand bed leveling after Backwash; water is pumped downwards through the sand bed, up through the Collector Hub and deposited out of the valve Port D.



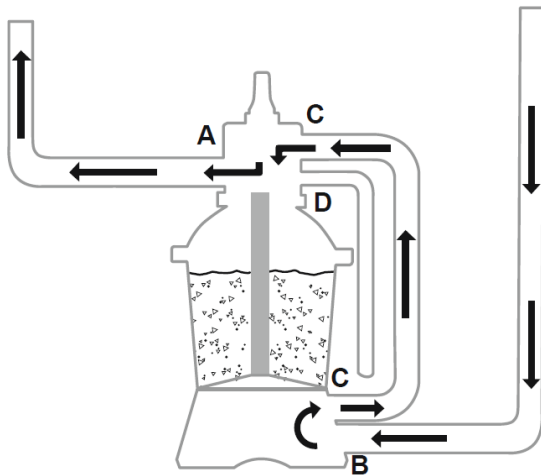
## Filter

This function is used to filter pool water and should be positioned here 99% of the time. Water is pumped through the sand filter, where it is cleaned and returned to the pool.



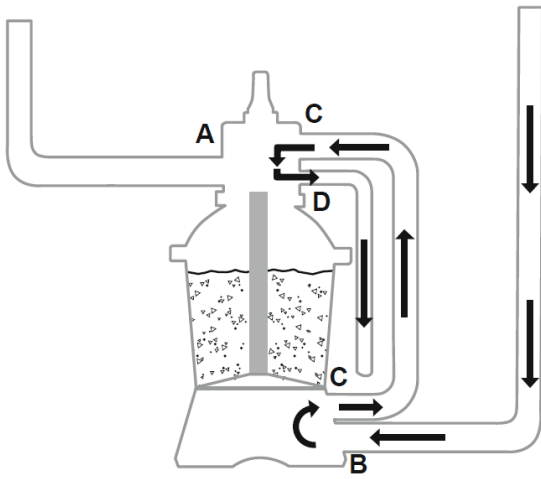
## Circulate

This function circulates pool water by passing the sand filter; use this function if the filter is broken to collect debris in the Debris Screens.

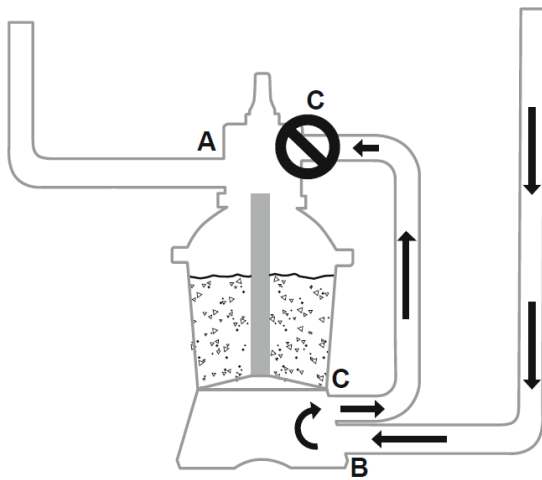


## Drain

This function drains water from the pool; another filter bypass setting, water is pumped and deposited out of Port D, instead of returning it to the pool.

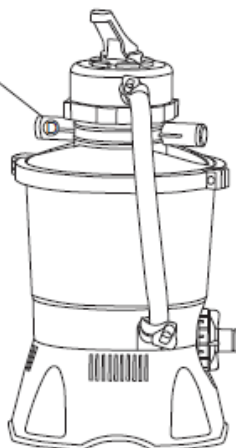
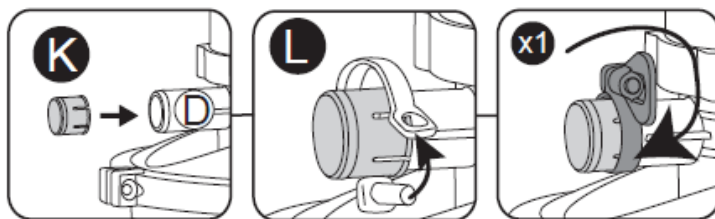


This function stops water flowing between the sand filter and the pool.



To avoid water leakage, insert the Port D Cap (K) onto the Control Valve Port D before operating the sand filter.

When the control valve is set to the Backwash, Rinse, or Drain position, remove the Port D Cap (K), water will discharge from the Control Valve Port D.



## FIRST TIME USE INSTRUCTIONS

- **Backwash and Rinse** must be performed to prepare the pump for its first use and to wash the sand.

**IMPORTANT:** This procedure removes water from the pool, which you'll need to replace. Switch off the sand filter immediately if the water reaches the same level as the pool inlet or outlet valves.

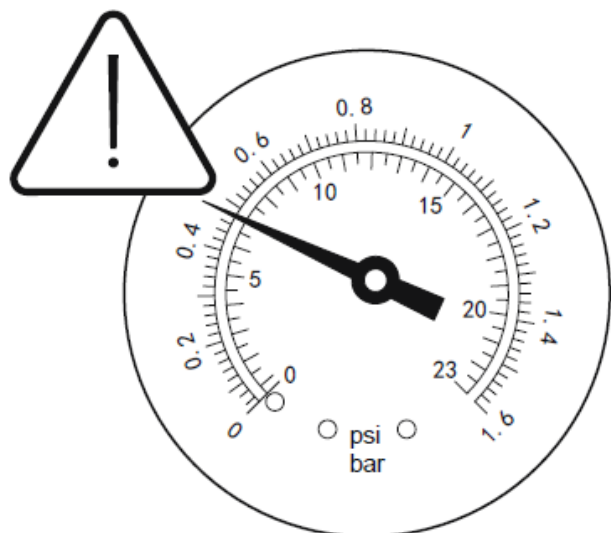
- Run Backwash for 3-5 minutes and then run Rinse for 1 minute.
- Now the sand filter is ready for use. Set the control valve to the Filter function.

**IMPORTANT:** Before operation, make sure the tank is placed steadily on its base and connected correctly to the pump.



Backwash  
Rinse

## MAINTENANCE INSTRUCTIONS



**CAUTION:** You must ensure the sand filter is switched off and unplugged before starting any maintenance or there is a severe risk of injury or death. As dirt builds up in the sand filter, the pressure reading on the Pressure Gauge will increase. When the Pressure Gauge is 0.25 Bar (3.5 PSI) or higher, it is time to clean the sand. To clean the sand bed, follow all instructions outlined previously in: **Backwash and Rinse**.

**NOTE:** The pressure gauge is for maintenance purposes only, and the pressure gauge value is just for reference. It should not be used as a precision instrument.

**NOTE:** We recommend you clean the sand bed once a month or less regularly depending on how often the pool is used. Do not clean the sand too frequently. We also suggest contacting your pool dealer for the chemical product specifically made to clean the sand. The correct maintenance of the sand will optimize the cleaning efficiency and avoid accumulation of oils or scale.

### Winterization

In areas that have freezing winter temperatures, pool equipment must be winterized to protect against damage. Allowing water to freeze will damage the sand filter and void the warranty.

1. Backwash the sand filter.
2. Drain the pool according to the pool owner's manual.
3. Disconnect the two hoses from the pool and the sand filter.
4. Completely pour the sand out of the tank and dry all components.
5. Store the sand filter in a dry location out of child's reach.

## DISASSEMBLY & STORAGE INSTRUCTIONS

### Draining:

For draining, refer to the illustration steps inside the manual.



Drawings are for illustration purposes only. May not reflect actual product. Not to scale.

Before draining your pool water, make sure that you are draining your pool away from the house and any objects that are subject to water damage. Check local regulations for drainage bylaws.

### Cleaning:

For cleaning, refer to the illustration steps inside the manual.



Drawings are for illustration purposes only. May not reflect actual product. Not to scale.

**NOTE:** The Strainer must be emptied and cleaned periodically. A dirty or blocked strainer will reduce the performance of the sand filter.

### Storage:

Remove all accessories; be sure that the sand filter, hoses and debris screens are completely clean and dry before storage. If all the parts are not completely dry, mold may result.

Before storage, remove and dry the sand, and store in dry place.

We strongly recommend disassembling the sand filter when the environment temperature is below 10°C / 50°F.

Store the sand filter in a dry place with a moderate temperature between 10°C / 50°F and 38°C / 100°F.

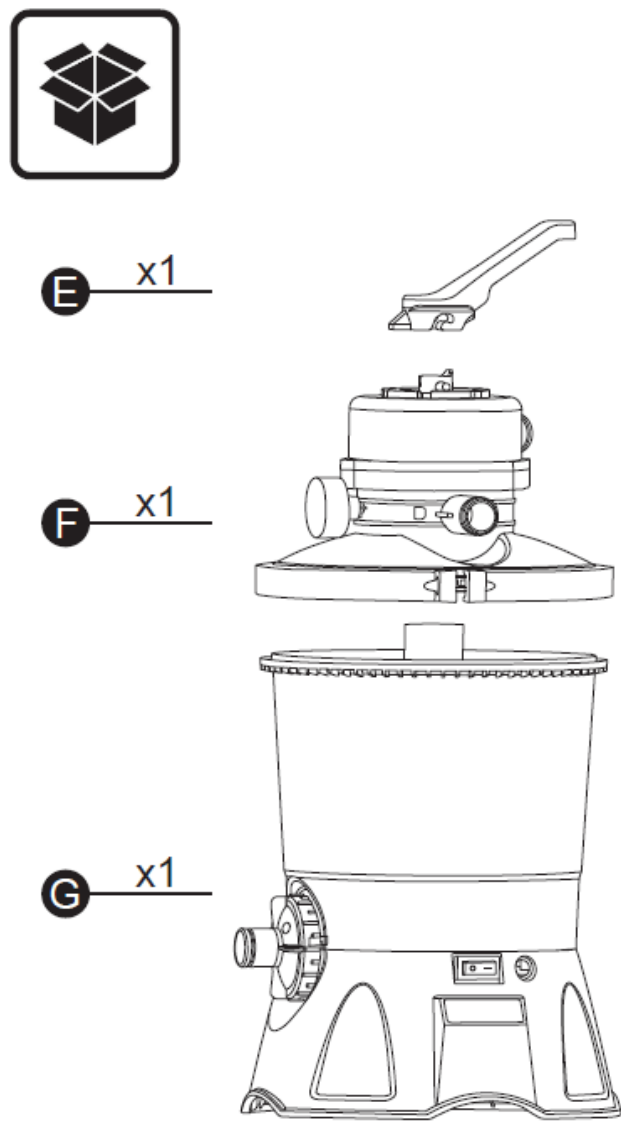
## TROUBLESHOOTING

Problems	Probable Causes	Solutions
Sand is flowing into the pool	<ul style="list-style-type: none"><li>Sand is too small</li><li>The control valve was moved from backwash to the filter function without stopping the sand filter</li><li>The skimmer is broken</li><li>The Backwash and Rinse are not enough to clean the sand</li></ul>	<ul style="list-style-type: none"><li>Recommend 0.45 mm to 0.85 mm #20 silica sand</li><li>Stop the sand filter before moving the control valve</li><li>Replace the skimmer</li><li>Repeat Backwash and Rinse</li></ul>
No water flow	<ul style="list-style-type: none"><li>Stopper plugs were not removed</li><li>Air was not released</li><li>The control valve is set to Closed</li><li>The strainer is blocked</li><li>Sand filter is broken</li><li>Hoses are incorrectly connected</li></ul>	<ul style="list-style-type: none"><li>Remove the stopper plugs and insert the debris screens</li><li>Release the air</li><li>Set to the Filter function</li><li>Clean the strainer</li><li>For assistance, please visit the support section on our website, <a href="http://www.bestwaycorp.com">www.bestwaycorp.com</a></li><li>Check hose connection</li></ul>
Excessive filter pressure	<ul style="list-style-type: none"><li>Dirty Sand / Polysphere™ Pool Filtration Balls</li><li>Calcified sand bed</li><li>Insufficient backwashing</li><li>The pressure gauge is broken</li></ul>	<ul style="list-style-type: none"><li>Perform Backwash or Rinse / wash the Polysphere™ Pool Filtration Balls</li><li>Inspect sand and change if necessary</li><li>Backwash until water runs clear</li><li>Replace the pressure gauge</li></ul>

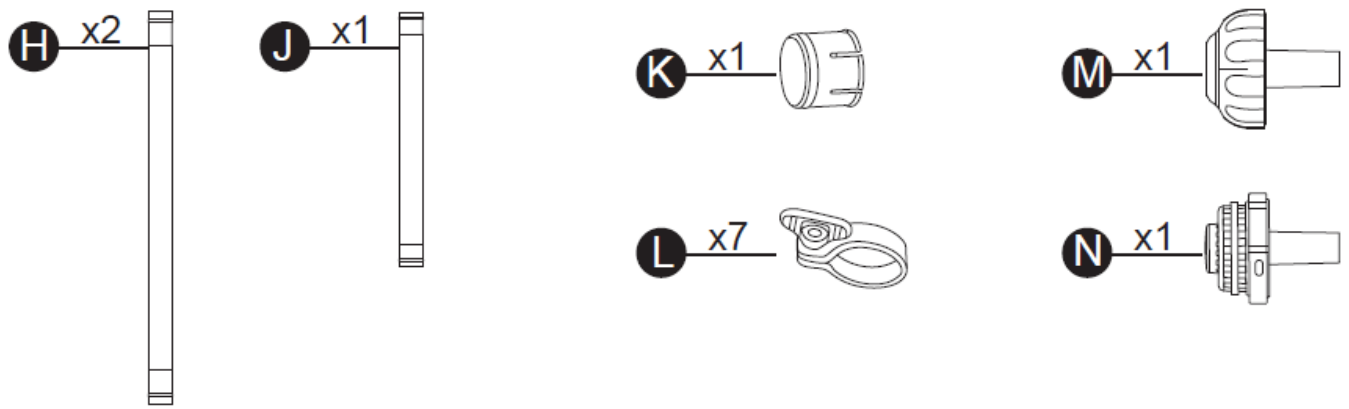
Control Valve leaks from Port D	<ul style="list-style-type: none"> <li>Control valve is set between two functions</li> <li>Leakage from Port D after installing the cap</li> <li>Small leakage from Port D without the cap</li> <li>Large amount of water flow from Port D without the cap when the control valve is on filter function</li> </ul>	<ul style="list-style-type: none"> <li>Set to one function</li> <li>Replace the cap on Port D</li> <li>Install the cap on Port D</li> <li>For assistance, please visit the support section on our website, <a href="http://www.bestwaycorp.com">www.bestwaycorp.com</a></li> </ul>
Water leakage between the hoses and the ports of the control valve	<ul style="list-style-type: none"> <li>O-ring on the hose connection is broken</li> <li>The gear or the plastic clip is not installed correctly</li> </ul>	<ul style="list-style-type: none"> <li>Replace the O-ring</li> <li>Tighten the gear or the plastic clip</li> </ul>

## WARRANTY TERMS

For support and product registration, please visit [bestwaycorp.com/support](http://bestwaycorp.com/support).



V1:



V2:

