

Play Center with Slide Manual

OWNER'S MANUAL

WARNING



Never leave your child unattended – drowning hazard.

KEEP ASSEMBLY AND INSTALLATION INSTRUCTION FOR FUTURE REFERENCE. THE TOY CONTAINS SMALL PARTS, IT SHOULD BE ASSEMBLED BY AN ADULT.

- Only for domestic use.
- Only for outdoor use.
- Children can drown in very small amounts of water. Empty the pool when not in use.
- Do not install the paddling pool over concrete, asphalt or any other hard surface.
- Place the product on a level surface at least 2 m from any structure or obstruction such as a fence, garage, house, overhanging branches, laundry lines or electrical wires.
- Recommend back towards the sun when playing.
- Modification by the consumer of the original paddling pool (for example the addition of accessories) shall be carried out according to the instructions of the manufacturer.
- Make sure the pool and slide are always connected while in use; do not exceed the maximum weight: 45 kg / 99 lbs. One person on the slide at a time. For 53097, do not exceed the maximum weight: 144kg / 317lbs, and the maximum users on the slide is two persons at a time.
- Children must remove shoes and glasses, as well as any sharp or hard objects from their pockets, as they may puncture the slide surface.
- Always keep the slide entrance free from obstruction.
- Do not allow food, drink or gum inside unit.
- Do not allow users to do somersaults or rough play.
- Do not allow users to climb or hang on containing walls.
- Do not use the product if wind speed exceeds 20mph.
- Do not use the product during inflation and deflation.
- Incorrect assembly could result a potential hazard.
- **As the red connector is an important connection part, it needs to be tightened during installation.**

SETUP

CHOOSE THE CORRECT LOCATION

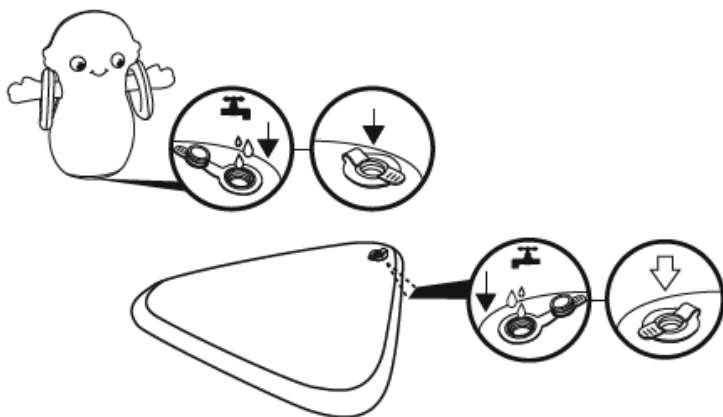
- Because of the combined weight of the water inside the pool and the users, it is important that the surface chosen to install the pool is capable of uniformly supporting the total weight for the entire time the pool is installed.
- An adequate drainage system has to be provided to deal with overflow water. During filling, draining or when in use, water may flow out of the pool.
- The surface must be flat and smooth. If the surface is inclined or uneven, it can damage the structure of the pool and the welding point.

- The selected surface must be clear of any type of object. Due to the weight of the water, any object under the pool could damage or perforate the material on the bottom.
- The selected surface must be clear of aggressive plants and weed species. Those types of strong vegetation could grow through the liner and create water leakage. The grass or other vegetation that may cause odor or slime to develop has to be eliminated from the set-up location.
- The selected location must not have overhead power lines or trees. Be sure the location does not contain underground utility pipes, lines or cables of any kind.
- The selected position must be far from house entrance. Do not position any equipment or other furniture around the pool. The water that comes out of the pool during the use or due to a faulty product can damage the furniture inside the house or surrounding the pool.
- **Suggested set-up surfaces:** grass, ground and all other surfaces that respect the above set-up conditions.
- **Not suggested surfaces:** mud, sand, gravel, deck, balcony, driveway, platform, soft/loose soil or other surface that does not meet the above set-up conditions.

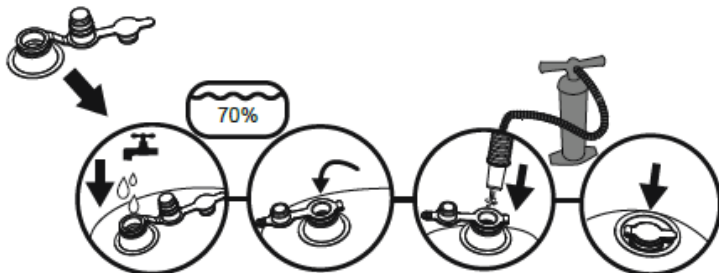
ASSEMBLY

Warning: Adult assembly required.

1. Open the water valve to fill water in the water chamber. (Only for product with water chamber)

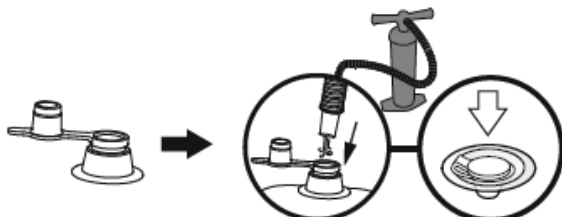


2. Open the 3-interconnecting valve to fill water in the water chamber and close the first cap, then inflate the same chamber with air pump (not included). Close the valve after inflation and press it into the air chamber. (Only for product with 3-interconnecting valve)

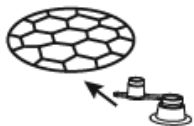


3. Open the safety valves and inflate the parts one by one. Be sure to close the valves after inflation. Air pump is not included.

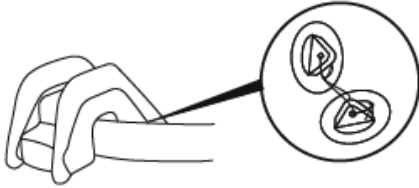
NOTE: Do not over inflate. Do not use either an air compressor or compressed air.



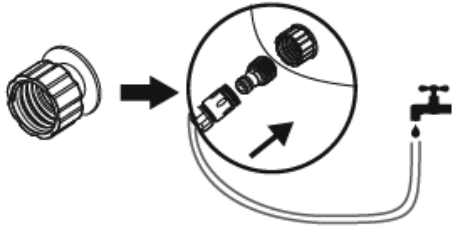
NOTE: For inflatable floor, the air valve is on the bottom side of the product.



4. Connect the slide to the pool by tighten the rope. (Only for product with detachable slide)



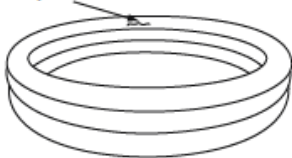
5. Connect your garden hose to the hose adapter.



6. Slowly fill the pool to a proper water level, if there is a fill line, reach but do not exceed the fill line on the pool's interior. **DO NOT OVERFILL** as this could cause the pool to collapse.

ATTENTION: Do not leave pool unattended while filling with water.

Proper Water Level



Proper Water Level

NOTE: All drawings for illustration purpose only. May not reflect actual product. Not to scale.

WATER MAINTENANCE

- Change the water of pools frequently (particularly in hot weather) or when noticeably contaminated, unclean water is harmful to the user's health.
- Please contact your local retailer to obtain chemicals to treat the water in your pool. Be sure to follow the chemical manufacturer's instructions.

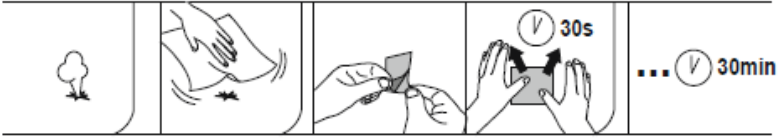
EMPTY THE POOL

1. Check local regulations for specific directions regarding disposal of swimming pool water.
2. For the inflatable pool, deflate all the air chambers, at the same time push down the wall of the pool to release the water.

NOTE: Drain by adult only!

CLEANING AND STORAGE

1. After use, use a damp cloth to gently clean all surfaces.
NOTE: Never use solvents or other chemicals that may damage the product.
2. Air dry the pool, once pool is completely dry, fold pool carefully and put back to its original packing. If pool is not completely dry, mould may result and will damage the pool.
3. Store in a dry place, with a temperature higher than 15°C/59°F, out of reach of children.
4. Check the product for damage at the beginning of each season and at regular intervals when in use.



Item	Age
53052; 53067; 53068; 53069; 53093; 53092; 53097; 53117; 53126; 91097; 98793; 53160; 98800; 53164; 9103Y; 53166; 53167	2+

Refer to the item name or number stated on the packaging. Packaging must be read carefully and kept for future reference.