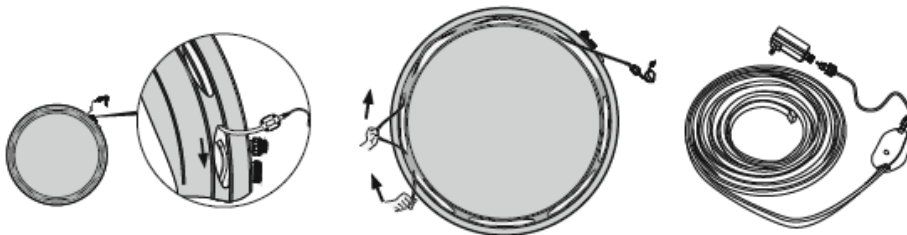
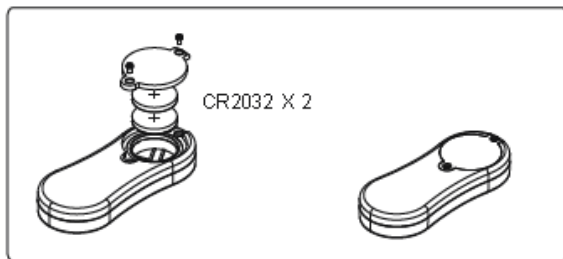
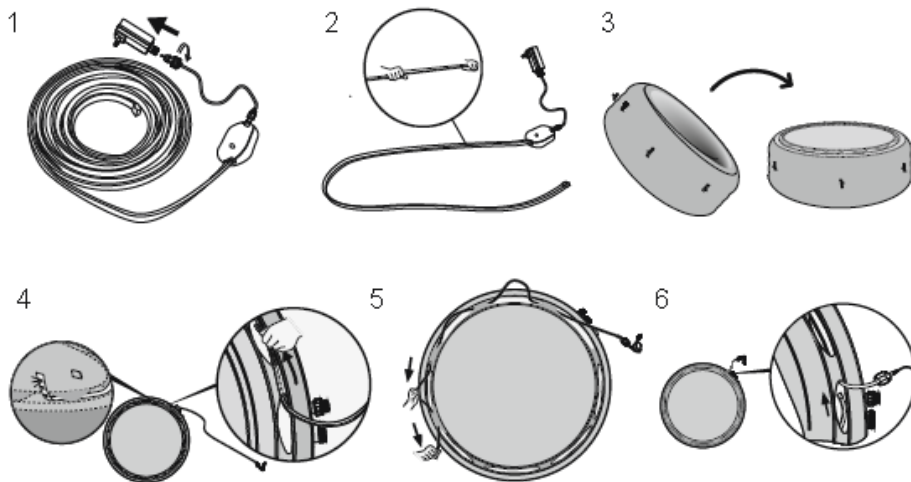


P5535 / P5710 LED Strip Manual



LED Strip Owner's Manual

Model P5535 / P5710

SAFETY INSTRUCTIONS

IMPORTANT SAFETY INSTRUCTIONS - READ AND FOLLOW ALL INSTRUCTIONS.

Warning - Do not connect the chain to supply while it is in the packing or wound onto a reel. Do not use the chain when covered or recessed into a surface. Do not open or cut the chain. The external flexible cable or cord of this luminaire cannot be replaced; if the cord is damaged, the luminaire

shall be destroyed.

The light source of this luminaire is not replaceable; when the light source reaches its end of life the whole luminaire shall be replaced.

Do not connect this chain electrically to another chain. The lamps are not replaceable.

Hereby, BESTWAY declares that the radio equipment type #P5535/P5710 is in compliance with Directive 2014/53/EU.

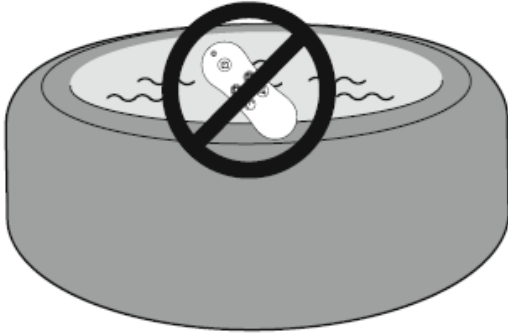
The full text of the EU declaration of conformity is available at the following internet address: www.bestwaycorp.com.

SAVE THESE INSTRUCTIONS.

WARNING

IMPORTANT: Do not put the Remote Control in the water, if the remote control falls into water, take it out of the water immediately.

Damage to the remote control caused by immersion in the water is not covered under your warranty.



Battery Precaution

- Do not mix old and new batteries.
- Do not mix the different types of batteries. Do not mix alkaline, standard (Carbon - Zinc), or rechargeable (Nickel - Cadmium) batteries.
- Ensure batteries are installed correctly with regard to polarity (+ and -).
- Do not short-circuit the battery.
- Never attempt to recharge primary batteries as this may cause leakage, fire, or explosion.
- Rechargeable batteries are to be removed from this product before being charged.
- Never attempt to disassemble or open batteries as this can lead to electrolyte burns.
- Remove batteries from equipment which is not to be used for an extended period of time.
- Exhausted batteries are to be removed from this product.
- Do not dispose of product and its batteries in fire. Check your local regulations for proper disposal instructions.
- Batteries shall not be exposed to excessive heat such as sunshine, fire or the similar.
- Keep batteries out of the reach of children.
- Only use 2 x CR2032 batteries.
- Do not ingest battery, Chemical Burn Hazard.
- This product contains coin cell batteries. If the coin cell battery is swallowed, it can cause severe internal burns in just 2 hours and lead to death.

DISPOSAL



Electrical products should not be disposed of with household waste. Please recycle where facilities exist. Check with your local authority or retailer for recycling advice.

Parts reference overview

LED strip, 433.92MHz

LED Remote Control, 433.92MHz, -10dBm

DC output transformer. Output:12VDC,1A



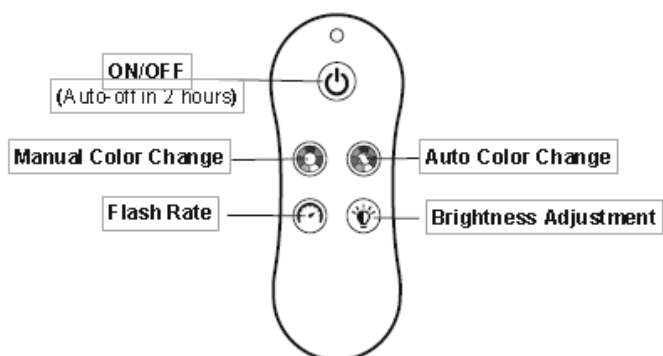
ON/OFF (Auto-off in 2 hours)

Manual Color Change

Flash Rate

Auto Color Change

Brightness Adjustment



Software Version:

CPU-SOP8-64A8/B637 for LED strip

CPU-SOP14-3F2A(8586) for Remote Control

Follow the instructions to straighten the strip before installing to the SPA.

ATTENTION: DO NOT TWIST OR THE STRIP COULD BREAK

ATTENTION: DO NOT PULL THE STRIP FROM THE CONNECTION

WARNING: THIS ROPE LIGHT MUST NOT BE USED WITHOUT ALL GASKETS BEING IN PLACE.