

# PHILIPS



Wet & Dry Electric  
Shaver with SkinIQ

i9000 Prestige

Triple Action Lift & Cut  
Technology

Dual SteelPrecision Blades

360° Precision Flexing Head

Pressure Guard Sensor



XP9202/10

## Long-lasting close shave, intelligent skin comfort with SkinIQ Technology

Philips i9000 Prestige, with its Triple Action Lift & Cut shaving system and a 360° Precision Flexing compact head cuts hair at skin-level, even in hard-to-shave-areas. Powered by AI, SkinIQ senses guides and adapts for intelligent skin comfort.

### Shaving performance

- Skin-level closeness, long-lasting results
- Dual SteelPrecision Blades
- Precision, even in the hardest-to-shave areas

### Convenience

- Effortless charging with convenient stand available to hand.
- Trim your moustache and sideburns
- Shave as you want: refreshing wet, dry or with foam
- One-touch open for easy cleaning
- Convenient charging

### Premium experience

- Built to last longer: 5 year warranty\*\*\*
- Protects your shaver and accessories
- Designed to last. Built for the future

### Skin comfort (Skin IQ)

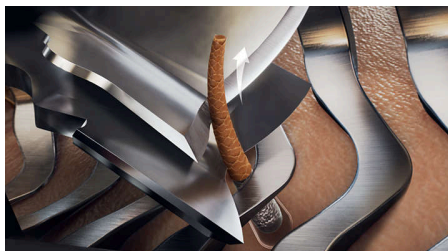
# i9000 Prestige

Wet & Dry Electric Shaver with SkinIQ

XP9202/10

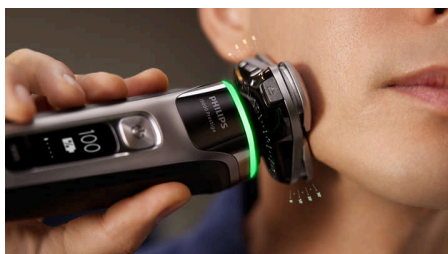
## Highlights

### Triple Action Lift & Cut System



Our patented Triple Action Lift & Cut shaving system lifts the hair gently from its root to cut it precisely up to 0.00 mm skin-level without cutting skin, for long-lasting closeness.

### 360° Precision Flexing Head



Fully flexible and smaller, compact heads with skin stretching patterns dynamically adapt to every curve of your face. For constant skin contact with 20% more precision\* to catch difficult hairs on the neck and under the nose. Precision everywhere.

### Dual SteelPrecision Blades



Our 360° rotating Dual SteelPrecision blades catch hair growing in different directions. With 7 million cutting motions per minute, for efficient shave even on a 1, 3 or 7-day beard.

### Pressure Guard Sensor



Powered by AI, our Pressure Guard system reads the pressure you apply and provides real-time feedback through lights, aiding you in adjusting the right pressure for optimal skin comfort. For a personalised shave that is just right for you.

### Hydro SkinGlide Coating



Our most advanced skin protection delivers 50% smoother gliding on the skin\*\* with the hydrophilic coating holding up to 500,000 microtech beads per square centimetre. For less friction and maximum comfort.

### Power Adapt Sensor



The shaver's intelligent sensor reads hair density 500 times a second and auto-adapts the cutting power for an effortless and gentle shave, even on dense beards.

### Improve efficiency with our app



Pair your shaver with our app for an ever-better routine and technique. Experience real-time guidance and personalised shaving insights to help you look and feel your best every day.

### 5 Year Warranty



Our shavers are designed for care and a long life. Our battery and motor are designed to last up to 5 years. Self-sharpening blades are made with space-grade level stainless steel and last 2 years between replacement.

### Charging Stand



Fully charge your shaver within 1 hour in the elegant stand. A stand created for both conveniently charging your device and neatly storing it away. In a hurry? Plug in your shaver for 5 minutes and get enough power for 1 full shave.



# i9000 Prestige

Wet & Dry Electric Shaver with SkinIQ

XP9202/10

## Highlights

### Integrated precision trimmer



Skin-friendly and easy to use, give your moustache and sideburns extra definition with the integrated precision trimmer.

### One-touch open



Clean your electric shaver with the touch of a button. Simply flip open the shaver head and rinse with water.

### Travel Pouch



The i9000 Prestige Shaver comes neatly packed in a travel case ideal for travel or safe keeping when not in use.

### Wet & Dry



Adapt your shaving routine to your needs. Our shaver is 100% waterproof so you can choose a comfortable dry shave or a refreshing wet shave. You can shave with gel or foam, even under the shower.

### USB-A Charging



At Philips, we drive sustainability in all aspects of product creation. Our ambition is to reduce waste and minimise the number of USB adapters we put in the market. Should you need an adapter, a suitable supply unit is available via: [www.philips.com/support](http://www.philips.com/support)

### Sustainability



All our i9000 shavers are made with high-quality long-lasting components and recyclable packaging, while our blades are produced in a factory that uses 100% renewable energy.

# i9000 Prestige

Wet & Dry Electric Shaver with SkinIQ

XP9202/10

## Specifications

### Accessories

Charging stand

Integrated pop-up trimmer

Travel and storage: Travel Pouch

### Software

App: GroomTribe, Connects via Bluetooth®

Smartphone compatibility: iPhone and

Android™ devices

### Power

Charging: 1 hour full charge, 5-min quick charge

Run time: 60 minutes

Battery type: Li-Ion

### Design

Colour: Dark Slate

Finishing: Timeless elegance

Handle: Ergonomic grip and handling

### Service

Replacement head: Replace every 2 yrs with

SH91

5-year warranty

### Shaving Performance

Shaving system: Triple-Action Lift & Cut System,

Dual SteelPrecision blades

Contour following: 360° Precision Flexing Head

**SkinIQ technology:** Power Adapt sensor, Motion Control sensor, Pressure Guard sensor, Hydro SkinGlide Coating

### Ease of use

Charging: USB-A Charging (5 V<sup>-</sup> / ≥1 A)

Display: % Battery Level Indicator, Travel lock,

Connect to app, Advanced OLED display

Wet & Dry: Wet and dry use

Cleaning: One-touch open, Fully washable

