

# PHILIPS



## Wet&Dry Electric Shaver with SkinIQ

### i9000 Prestige

Triple Action Lift & Cut  
Technology

Dual Steel Precision Blades

360° Precision Flexing Head

Pressure Guard Sensor



XP9202/10

## Long-lasting close shave, intelligent skin comfort with SkinIQ Technology

Philips i9000 Prestige, with Triple Action Lift&Cut shaving system and 360° Precision Flexing compact head cuts hair at skin-level, even in hard-to-shave-areas. Powered by AI, SkinIQ senses, guides and adapts for intelligent skin comfort.

### Shaving performance

- Skin-level closeness, long-lasting results
- Efficient in every pass, even on a 1, 3 or 7-day beard
- Precision, even in hardest-to-shave areas

### Convenience

- Effortless charging with convenient stand available at hand
- Trim your mustache and sideburns
- Shave as you want: refreshing wet, dry or with foam
- One-touch open for easy cleaning
- Convenient charging

### Premium experience

- Built to last longer: 5 years warranty\*\*\*
- Protects your shaver and accessories
- Designed to last. Built for the future

### Skin comfort (Skin IQ)

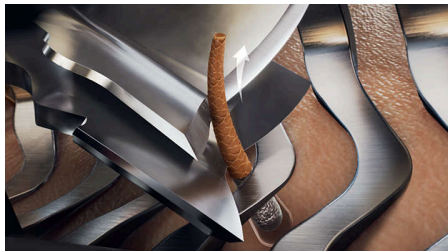
# i9000 Prestige

Wet&Dry Electric Shaver with SkinIQ

XP9202/10

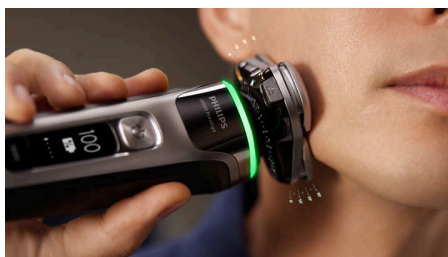
## Highlights

### Triple Action Lift&Cut System



Our patented Triple Action Lift & Cut shaving system lifts the hair gently from its root to cut it precisely up to 0.00mm skin-level, without cutting skin for long-lasting closeness.

### 360° Precision Flexing Head



Fully flexible and smaller, compact heads with skin stretching patterns dynamically adapt to every curve of your face. For constant skin contact with 20% more precision\* to catch difficult hairs on the neck and under the nose. Precision everywhere.

### Dual SteelPrecision Blades



Our 360° rotating Dual SteelPrecision blades catch hair growing in different directions. With 7 million cutting motions per minute, for efficient shave even on a 1, 3 or 7-day beard.

### Pressure Guard Sensor



Powered by AI, our Pressure Guard system reads the pressure you apply and provides real-time feedback through lights, aiding you in adjusting the right pressure for optimal skin comfort. For a personalised shave that is just right for you.

### Hydro SkinGlide Coating



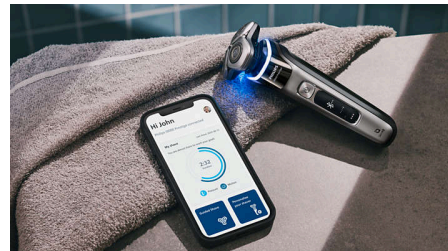
Our most advanced skin protection delivers 50% smoother gliding on the skin\*\* with the hydrophilic coating holding up to 500,000 microtech beads per square centimeter. For less friction and maximum comfort.

### Power Adapt Sensor



The shaver's intelligent sensor reads hair density 500 times a second and auto-adapts the cutting power for an effortless and gentle shave, even on a dense beard.

### Improve efficiency with our app



Pair your shaver with our app for an ever-better routine and technique. Experience real-time guidance and personalized shaving insights to help you look and feel your best every day.

### 5 Years Warranty



Our shavers are designed for care and a long life. Our battery and motor are designed to last up to 5 years. Self-sharpening blades are made with the space-grade level stainless steel, and last 2 years between replacement.

### Charging Stand



Fully charge your shaver within 1 hour in the elegant stand. A stand created for both conveniently charging your device and neatly storing it away. In a hurry? Plug in you shaver for 5 minutes and get enough power for 1 full shave.



## i9000 Prestige

Wet&Dry Electric Shaver with SkinIQ

XP9202/10

# Highlights

### Precision trimmer integrated



Skin-friendly and easy to use, give your mustache and sideburns extra definition with the integrated precision trimmer.

### One-touch open



Clean your electric shaver with the touch of a button. Simply flip open the shaver head and rinse with water.

### Travel Pouch



The i9000 Prestige Shaver comes neatly packed in a travel case ideal for travel or keeping it safe when it's not in use.

### Wet & Dry



Adapt your shaving routines to your needs. Our shaver is 100% waterproof so you can choose a comfortable dry shave, or a refreshing wet shave. You can shave with gel or foam even under the shower.

### USB-A Charging



At Philips, we drive sustainability in all aspects of product creation. Our ambition is to reduce waste and minimize the number of USB adaptors we put in the market. Should you need an adapter, a suitable supply unit is available via: [www.philips.com/support](http://www.philips.com/support)

### Sustainability



All our i9000 shavers are made with high-quality long-lasting component and recyclable packaging, while our blades are produced in a factory that uses 100% renewable energy.

# i9000 Prestige

Wet&Dry Electric Shaver with SkinIQ

XP9202/10

## Specifications

### Accessories

Charging stand

Integrated pop-up trimmer

Travel and storage: Travel Pouch

### Software

App: GroomTribe, Connects via Bluetooth®

Smartphone compatibility: iPhone and

Android™ devices

### Power

Charging: 1 hour full charge, 5 min quick charge

Run time: 60 minutes

Battery type: Li-ion

### Design

Handle: Ergonomic grip & handling

Finishing: Timeless elegance

Color: Dark Slate

### Service

5-year warranty

Replacement head: Replace every 2 yrs with

SH91

### Shaving Performance

Shaving system: Triple Action Lift & Cut System,

Dual SteelPrecision blades

Contour following: 360° Precision Flexing Head

**SkinIQ technology:** Power Adapt sensor, Motion Control sensor, Pressure Guard sensor, Hydro SkinGlide Coating

### Ease of use

Wet & Dry: Wet and dry use

Cleaning: One-touch open, Fully washable

Display: % Battery Level Indicator, Travel lock,

Connect to app, Advanced OLED display

Charging: USB-A Charging (5V<sup>—</sup> / ≥1A)

