



ThinkPad T14s Gen 6



Get started



* Lenovo USB-C to
VGA Adapter



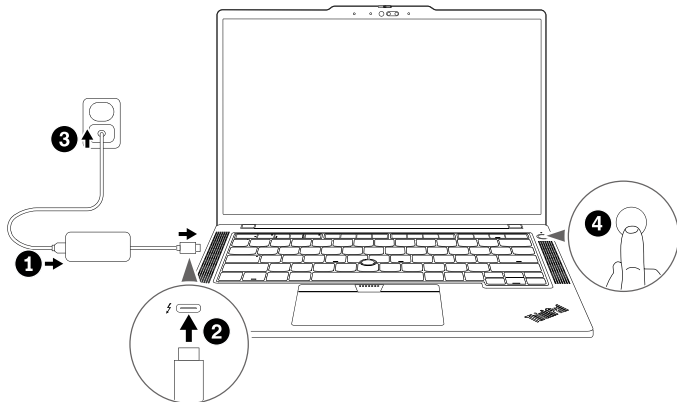
* Lenovo USB-C to
DisplayPort Adapter



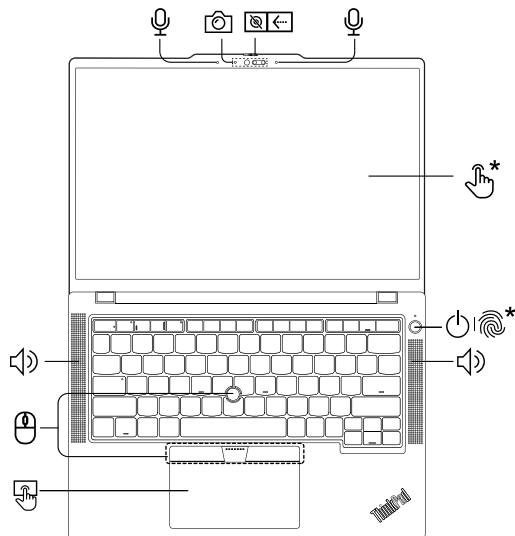
* Lenovo HDMI to
VGA Adapter



* Lenovo USB-C to
Ethernet Adapter



Overview



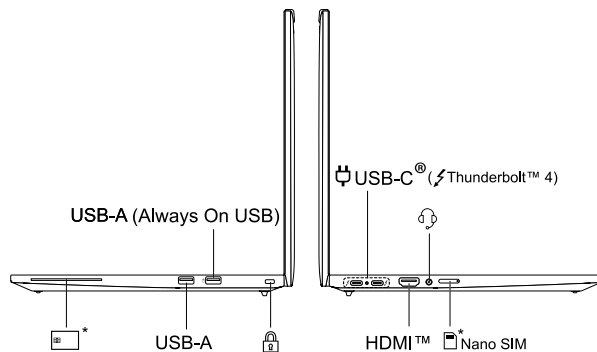
Press to log in to the computer*



Navigate as a traditional mouse

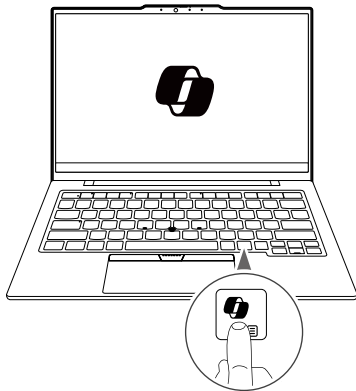
Overview

Overview | Overview | Overview | Overview | Overview



Read the statement on USB transfer rate in the *User Guide*. To access the *User Guide*, refer to methods mentioned on the back cover.

Copilot¹ in Windows

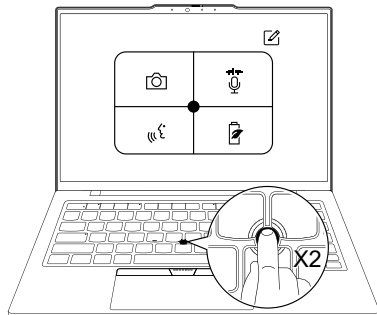


Access Copilot in Windows for AI-powered assistance.

¹ This function might not be available in your country or region.

TrackPoint Quick Menu

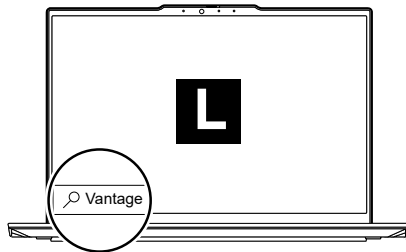
Launch TrackPoint Quick Menu by double tapping² for quick configuration of some device settings.



² It can be set to single tapping.

Lenovo Commercial Vantage*

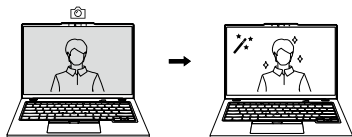
Access Commercial Vantage to adjust device settings and check for system updates.



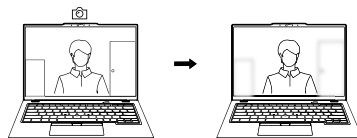
Lenovo View*



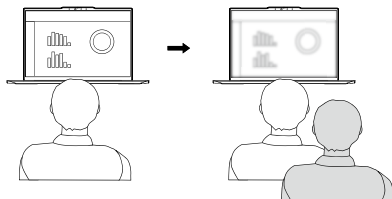
Video Enhancer



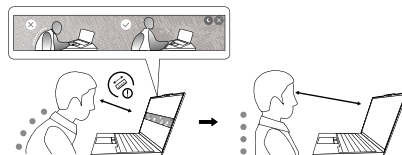
Background Removal*



Privacy Guard



Posture Warning



[English]

Specific absorption rate (SAR)

YOUR DEVICE MEETS INTERNATIONAL GUIDELINES FOR EXPOSURE TO RADIO WAVES.

Refer to the following for 10g SAR limit and maximum reported SAR values:

10g SAR limit: 2 W/kg (body-worn SAR); 4 W/kg (limb SAR)

Maximum SAR with 0 mm separation distance: 1.230 W/kg (body-worn SAR); 3.072 W/kg (limb SAR)

For more information about SAR, refer to the *Safety and Warranty Guide* that came with your device.

European Union (EU) / United Kingdom (UK) — radio frequency and power

This radio equipment operates with the following frequency bands and maximum radio-frequency power:

Technology	Frequency [MHz] / band	Maximum transmit power
WLAN 802.11b/g/n/ax/be Bluetooth BR/EDR/LE	2400 - 2483.5	< 20 dBm
WLAN 802.11a/n/ac/ax/be	5150 - 5350; 5470 - 5725	< 23 dBm
WLAN 802.11a/n/ac/ax/be	5725 - 5875	< 13.98 dBm
WLAN 802.11ax/be	5945 - 6425	< 23 dBm
WWAN UMTS	1/8	< 25 dBm
WWAN LTE	1/3/7/8/20/28/34/38/40/41/42/43	< 25 dBm
WWAN LTE HPUE	41	< 27 dBm
WWAN 5G NR	1/3/7/8/20/28/38/40/41/77/78	< 25 dBm
WWAN 5G NR HPUE	41/77/78	< 28 dBm

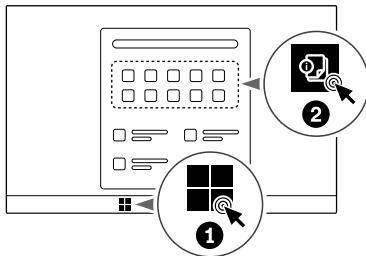
Note: Not all wireless bands may be enabled depending on your product configuration. Usage of this device is limited to indoor locations in the bands 5150 - 5350 MHz and 5945 - 6425 MHz.

For Barcode Position Only

PN: xxxxxxxxx Printed in China

Access User Guide

Access User Guide | Access User Guide | Access User Guide | Access User Guide | Access User Guide



First Edition (October 2024)

© Copyright Lenovo 2024.

LIMITED AND RESTRICTED RIGHTS NOTICE: If data or software is delivered pursuant to a General Services Administration "GSA" contract, use, reproduction, or disclosure is subject to restrictions set forth in Contract No. GS-35F-05925.

Lenovo, Lenovo logo, ThinkPad, and ThinkPad logo are trademarks of Lenovo. Thunderbolt is a trademark of Intel Corporation or its subsidiaries in the U.S. and/or other countries. The terms HDMI and HDMI High-Definition Multimedia Interface are trademarks or registered trademarks of HDMI Licensing LLC in the United States and other countries. USB-C® is a registered trademark of USB Implementers Forum. All other trademarks are the property of their respective owners.



Reduce
Reuse
Recycle

For FSC Mix logo only