



# 300Mbps Wireless N 4G LTE Outdoor Router

Connect More, Cover Everything.



Wall  
Mounting



Pole  
Mounting



Window  
Mounting

TL-MR100-Outdoor



 **IP65**  
WATER & DUST RESISTANT

4G (TDD&FDD)/3G  
Compatible

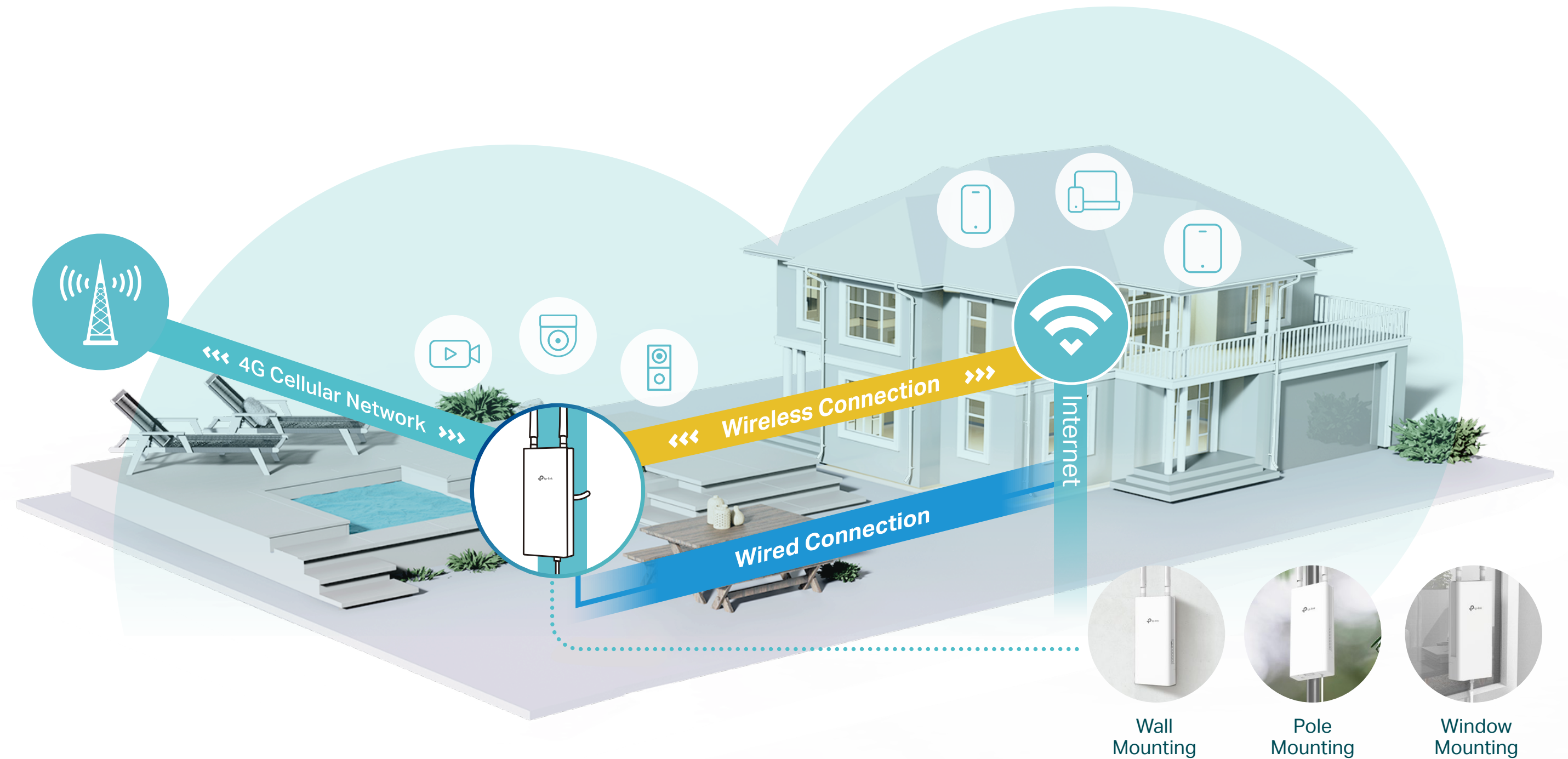
300 Mbps  
Wi-Fi Speed\*

Connects up to  
32 Devices

Endurable Outdoor  
Enclosure

# Highlights






## Experience Reliable Connectivity Indoors and Outdoors



# Highlights

## Fast 4G router with wide coverage

The TL-MR100-Outdoor is a 4G router with external antennas that offers fast speeds and wide coverage, connecting up to 32 devices. It can also be used as a traditional wireless router via the WAN port.

-  Supports LTE up to 150 Mbps and Wi-Fi up to 300 Mbps on 2.4 GHz\*
-  Access for up to 32 Devices Simultaneously
-  External Antennas for Broader Coverage
-  Wired Connection Available
-  Plug and Play with a SIM Card

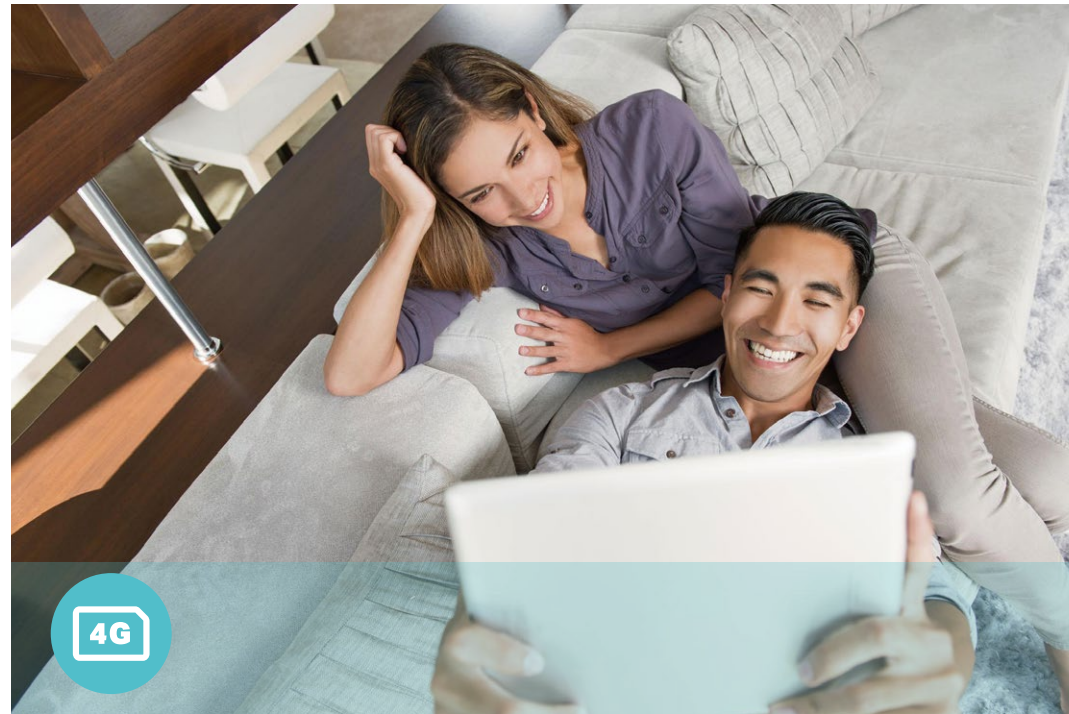
## Perfect for outdoor network connections

The TL-MR100-Outdoor features a durable enclosure that ensures stable performance in harsh outdoor environments. With multiple mounting options and PoE, it's easy to set up in various outdoor settings.

-  IP65 Waterproof & Dustproof\*\*
-  ±6KV Lighting Protection & ±15KV EDS Protection\*\*\*
-  Wide Operating Temperature Range
-  Multiple Mounting Options
-  PoE/DC Port Power Support



# Features



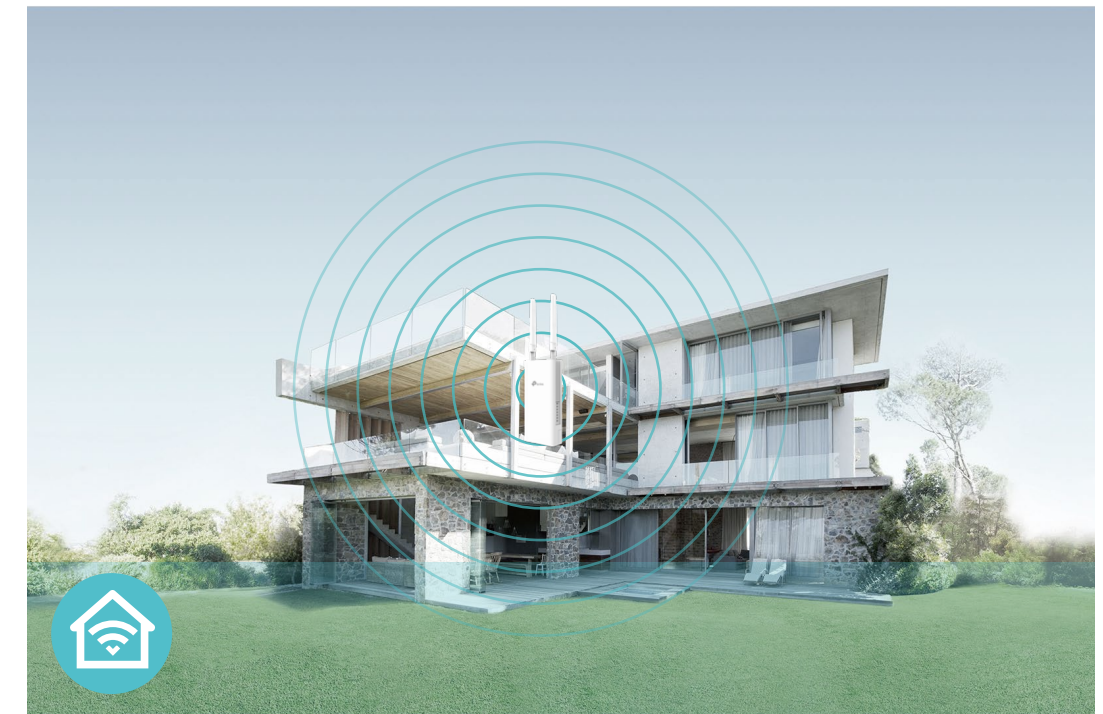
## 4G LTE

- 4G LTE – Ideal for cutting-edge 4G LTE network
- Faster Connection – Download Speed 150 Mbps + Upload Speed 50 Mbps
- Backward Compatible – Compatible with 3G/4G network



## Wi-Fi Speed

- 300 Mbps Wireless Speed – 300 Mbps Wi-Fi allows stable speed for wireless activities, such as streaming, browsing and posting social media



## Wi-Fi Range

- Great Coverage – Better coverage with advanced LTE antennas

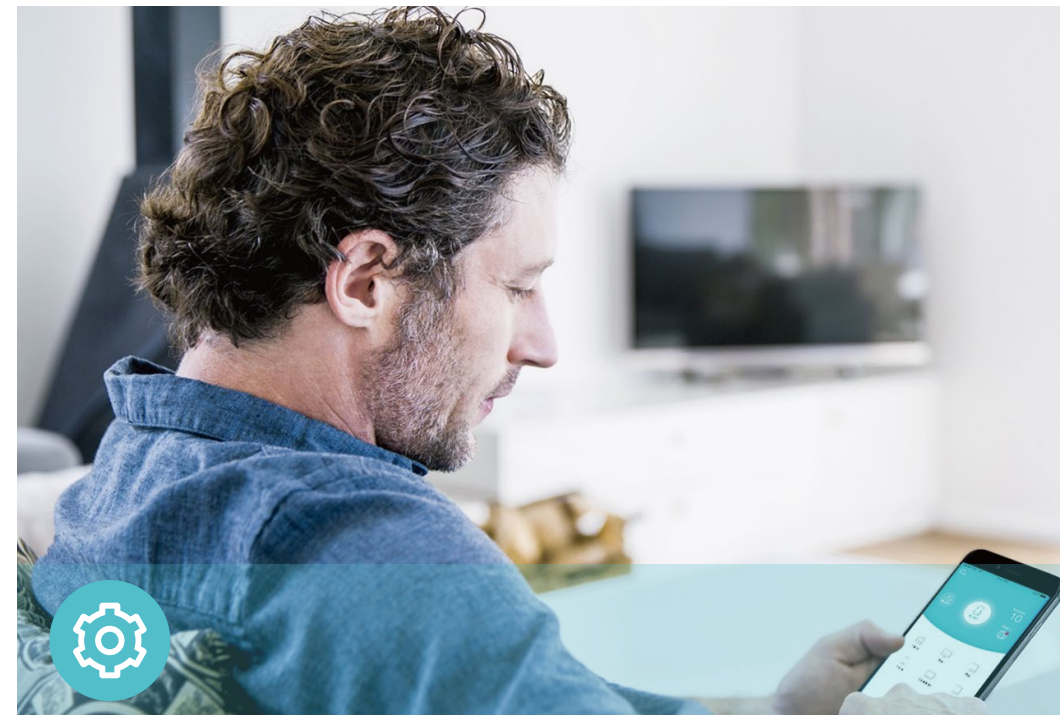


# Features



## Reliability

- **Superior Stability** – Powerful processor enables you to connect up to 32 wireless devices with ease
- **WAN Connection Backup** – Works as a router to provide backup internet connection



## Ease of Use

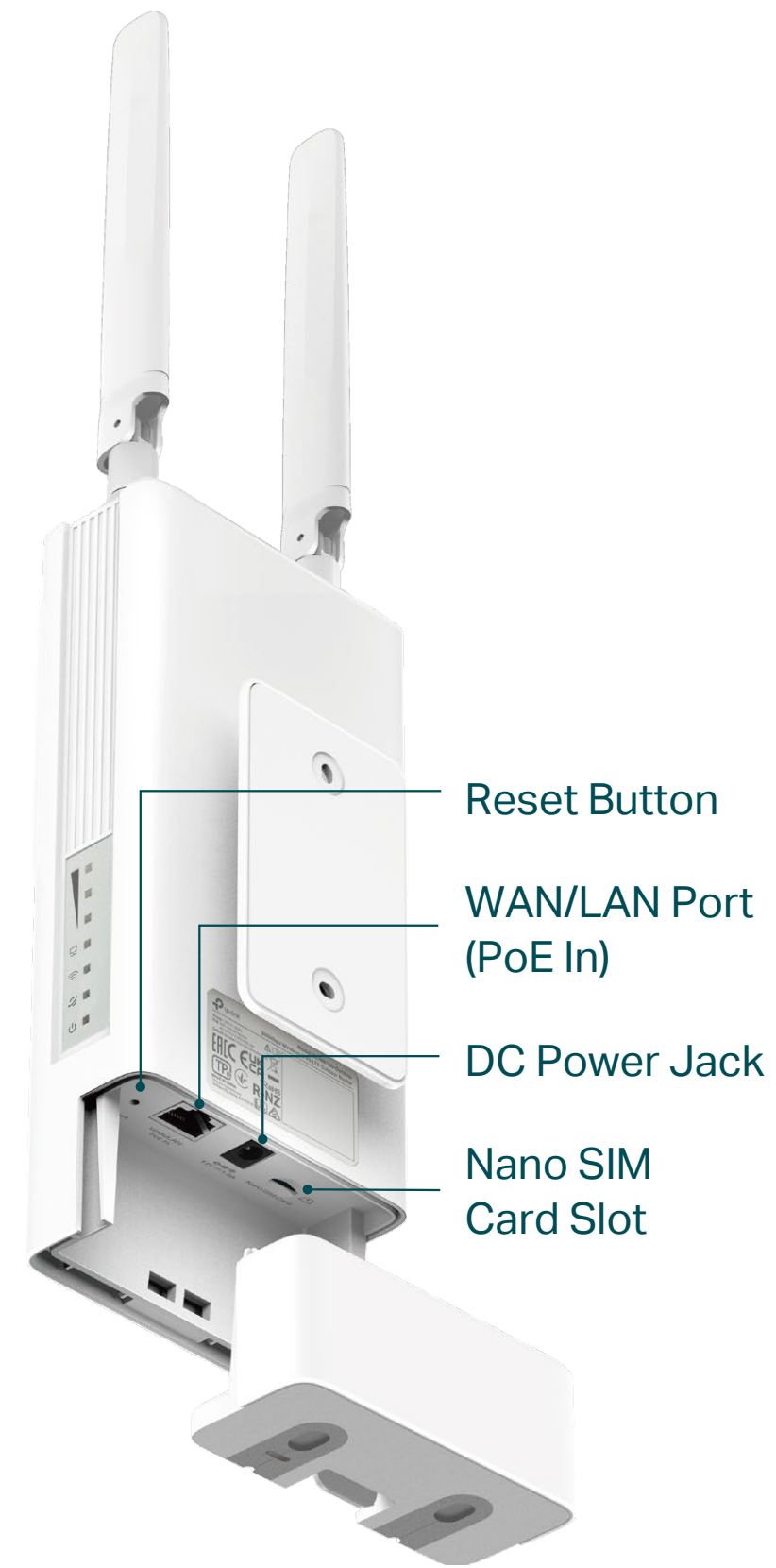
- **Intuitive Web UI** – Ensures quick and simple installation without hassle



## Security

- **Guest Network** – Keeps your main network secure by creating a separate network for friends and visitors
- **Access Control** – Establishes a whitelist or blacklist to allow or restrict certain devices to access the internet
- **Encryptions for Secure Network** – WPA-PSK and WPA2-PSK encryptions provide active protection against security threats

# Specifications



## Hardware

- LTE: Download Speed 150 Mbps + Upload Speed 50 Mbps
- Interface: 1× 100 Mbps WAN/LAN Port (PoE In) + 1× Nano SIM Card Slot + 1 × DC Port
- Buttons: 1× Reset Button
- Durable IP65 Weatherproof Enclosure
- Antennas: 2 × Detachable LTE Antennas
- External Power Supply: 12V/1A DC
  - 48V/0.375A Passive PoE
  - 44-57V/0.35A 802.3af
- Dimensions (W x D x H): 8.9 x 3.9 x 2.2 in (226.6 x 100x 54.7mm)

# Specifications

## Wireless

- Network Type  
  
4G: FDD-LTE: B1/B3/B5/B7/B8/B20/B28  
(2100/1800/850/2600/900/800/700 MHz)  
  
TDD-LTE: B38/B40/B41  
(2600/2300/2500 MHz)  
  
3G: DC-HSPA+/HSPA/UMTS:B1/B5/B8(2100/850/900 MHz)
- Wireless Standards: IEEE 802.11b/g/n
- Frequency: 2.4 GHz
- Signal Rate: 300 Mbps
- EIRP (CE): < 20 dBm (2.4 GHz)
- Reception Sensitivity:  
  
11g 54M: -74 dBm  
11n HT20: -73 dBm  
11n HT40: -70 dBm
- Wireless Function: Enable/Disable Wireless Radio, Wireless Schedule, WMM, Wireless Statistics
- Wireless Security: WPA/WPA2, WPA-PSK/WPA2-PSK encryptions



For more information, please visit  
[https://www.tp-link.com/products/details/?model=TL-MR100-Outdoor\\_V1](https://www.tp-link.com/products/details/?model=TL-MR100-Outdoor_V1)  
or scan the QR code left

## Software

- Operating Modes: 3G/4G Router, Wireless Router
- WAN Type: Dynamic IP/Static IP/PPPoE/PPTP(Dual Access)/L2TP(Dual Access)
- DHCP: Server, DHCP Client List, Address Reservation
- Port Forwarding: ALG, Virtual Server, Port Triggering, UPnP, DMZ
- Dynamic DNS: TP-Link, DynDns, NO-IP
- Security: DoS, IPv4 SPI Firewall, IP and MAC Address Binding
- Protocols: IPv4, IPv6
- Management: Local Management, Remote Management
- Administration: Upgrade Firmware, Factory Default, System Log, Diagnostic Tools
- Guest Network: 2.4 GHz guest network

## Others

- Certification:  
  
CE, RoHS
- Requirements:  
  
Edge, Firefox, Chrome, Safari, or other JavaScript-enabled browser  
  
\*You are recommended to use the latest version  
  
Nano SIM Card
- Environment:  
  
Operating Temperature: -30°C~60°C (-22°F~140°F)  
  
Storage Temperature: -40°C~70°C (-40 °F~158 °F)  
  
Operating Humidity: 10%~90% RH  
  
Storage Humidity: 5%~90% RH
- Package Contents  
  
1× TL-MR100-Outdoor Unit  
  
1× 10-Meter RJ45 Ethernet Cable  
  
1× PoE Adapter  
  
1× AC Power Cord  
  
1× Quick Installation Guide  
  
Window/Pole/Wall Mounting Kits

\*Maximum wireless signal rates are the physical rates derived from IEEE Standard 802.11 specifications, Actual wireless data throughput and wireless coverage are not guaranteed and will vary as a result of network conditions, client limitations, and environmental factors, including building materials, obstacles, volume and density of traffic, and client location.

\*\*This product has an IP65 dustproof and waterproof rating, but it is unsuitable for prolonged immersion or high-pressure water jets. Please install and use it according to the manual; otherwise, the protective features may fail.

\*\*\*Tested under controlled laboratory conditions. Per CE standards, protection levels are: Lightning/Surge Protection at 2kV for Differential Mode (DM) and 4kV for Common Mode (CM), and ESD Protection at 4kV for Contact Protection and 8kV for Air Protection. For optimal protection, please follow the setup instructions in the manual.

§Actual network speed may be limited by the rate of the product's Ethernet WAN or LAN port, the rate supported by the network cable, internet service provider factors, and other environment conditions.