

PHILIPS

NORELCO



Face + Body

OneBlade Pro 360

Rechargeable Li-Ion battery

20-length precision comb

Wet & Dry use

LED digital display



QP6552/70

Trim edge & shave any length of hair effortlessly*

Designed to cut hair, not skin

The new Philips Norelco OneBlade Pro 360 trims, edges and shaves any length of hair, more effortlessly*. Forget about using multiple steps and tools. OneBlade does it all.

Easy to use

- Blade that doesn't fade easily
- 120 min Li-Ion battery
- LED digital display shows status of battery and travel lock
- Click-on body comb (3 mm)
- Click-on skin guard for sensitive areas
- Charge anytime, anywhere

Comfortable shave

- Unique OneBlade Technology
- Innovative 360 Blade
- Shave it off

Sharp edges

Even trim

Easy to use

Highlights

Unique OneBlade Technology

Philips OneBlade has a revolutionary technology designed for facial grooming. It can shave any length of hair. Its dual protection system a glide coating combined with rounded tips makes shaving easier and comfortable. Its shaving technology features a fast-moving cutter (12000x per min) so it's efficient - even on longer hairs.

Innovative 360 Blade

Innovative 360 Blade moves in all directions and adjusts to every curve of your face to maintain constant skin contact, while enabling control at all times. Easily trim & shave, even the most difficult to reach areas with fewer passes and greater comfort*.

Trim it down

Trim your beard to an even length with the included adjustable precision comb. Dial up one of the 20 lock-in length settings to get everything from a 5 o'clock shadow, to a tight trim, to a longer beard style.

Trim Away

The versatile precision trimming comb offers length settings from 0.4 to 10 mm, giving you an even trim at exactly the length you want.

Edge it up

Create precise edges with the dual-sided blade. You can shave in either direction to get great visibility and see every hair that you're cutting. Line up your style in seconds!

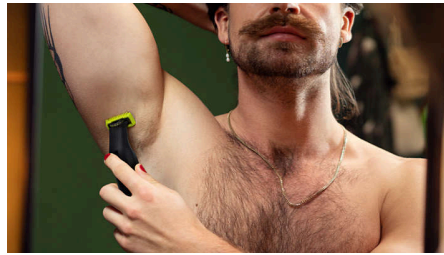
Shave it off

OneBlade doesn't shave as close as a traditional blade - so your skin stays comfortable. Go against the grain and shave off any length of hair easily.

Dual-sided blade

OneBlade follows the contours of your face, allowing you to easily and comfortably shave all areas. Use the dual-sided blade to style your edges and create clean lines by moving the blade in any direction.

Click-on skin guard



Attach the skin guard for an extra layer of protection on sensitive areas.

Click-on body comb

Attach the body comb (3 mm) for an easy trim in any direction.

USB-A charging

Can be charged at home or on the road, perfect for your daily routine and for travel.

Blade that doesn't fade easily

Durable stainless steel blade that lasts up to 4 months of use** to keep that fresh feel. When the replacement indicator - eject icon - will appear on the blade, the blade performance may no longer be optimal. It is time to consider changing the blade for the best shaving experience

Wet & dry

OneBlade is fully waterproof (IPX7), so it is easy to clean: just rinse it under the tap. You can shave wet or dry, even in the shower - whichever you prefer. No shaving foam needed.

120 min Li-Ion battery

Rechargeable Li-Ion battery delivers 120 minutes of constant styling power after a 1 hour charge.

LED digital display

Be sure that your OneBlade is always ready to go by checking the LED digital display. It alerts you while in-use when your battery is low, and it indicates charging progress when plugged in. Activate the travel lock to take the OneBlade anywhere you go.

Specifications

Trimming & shaving performance

Shaving system: Contour-following technology,

Dual protection system, 360 Blade

Trimming system: Contour-following technology

Accessories

Pouch: Soft pouch

Comb: 20-length comb (0.4 to 10mm), Click-on skin guard, Click-on body comb

Maintenance: Protection cap

Stand: Charging stand

Extra replaceable blade

Power

Run time: 120 minutes

Charging: 1 hour full charge

Automatic voltage: 100-240 V

Battery type: Li-ion

Max power consumption: 5.4 W

Design

Color: Chrome

Handle: Ergonomic grip & handling

Service

Replacement head: Replace every 4 months**, QP210, QP220, QP230, QP610, QP620, QP410, QP420

2-year warranty: 2-year warranty on the handle

Ease of use

Display: LED digital display, Travel lock indicator

Wet & Dry

Rechargeable

USB-A charging: Power Adapter not included

