

# BSI-Certified Refurbished HP EliteBook 840 G8 i5 Gen 11

HP-EB840G8I5-8-256W

## CORE SPECIFICATIONS

Screen Size	14"
Standard Display	1920x1080
Processors	Intel Core i5
Graphics Card	Intel UHD Graphics
RAM Options	4 / 8 / 16 / 32 / 64 GB
Memory Type	DDR4
Drive Options	120 / 256GB / 512GB / 1TB SSD
OS Installed	Windows 10 Pro Win 11 compatible

Warranty	2 years return to base (RTB) Upgradable to 3 years
----------	-------------------------------------------------------

## PORTS

TYPE-C	2
USB 3.0	2
HDMI	Yes

## SECURITY

Security Chip	TPM 2.0
---------------	---------

## NETWORK

WIFI	Intel Dual Band Wireless--AC 8260 Wi-Fi 6 (802.11ax)
------	------------------------------------------------------------

## HARDWARE

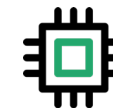
Keyboard reprinted	Any language Please enquire
Camera (resolution)	720p HD camera
Weight	1330 g
Dimensions (W x D x H)	323.6mm x 214.7mm x 17.9mm
Speaker (stereo or mono)	2

## SUSTAINABILITY

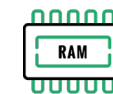
Average Energy Consumption p.a	20 kWh
CO2 prevented by not buying new	<a href="#">200 kg of CO2e</a>
Carbon offsetting	A tree planted for every unit sold (70-100KG CO2eq)

## BSI-CERTIFIED QUALITY

BSI Refurbished	BS 8887 standard
Quality Process	ISO 9001 & ISO 14001



Core i5 11th Gen



8 GB RAM



256GB SSD



14" - 1920 x 1080



Windows 11 Pro installed



KM 781712  
BS 8887-211:2011

KITEMARK™



\*Image accuracy is not guaranteed