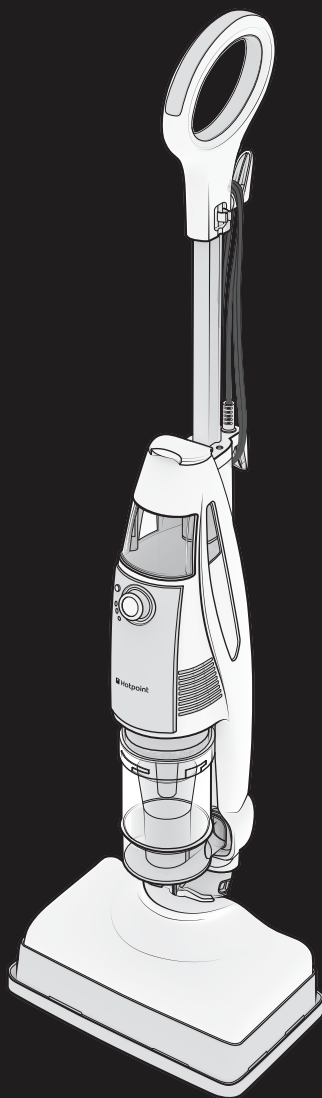
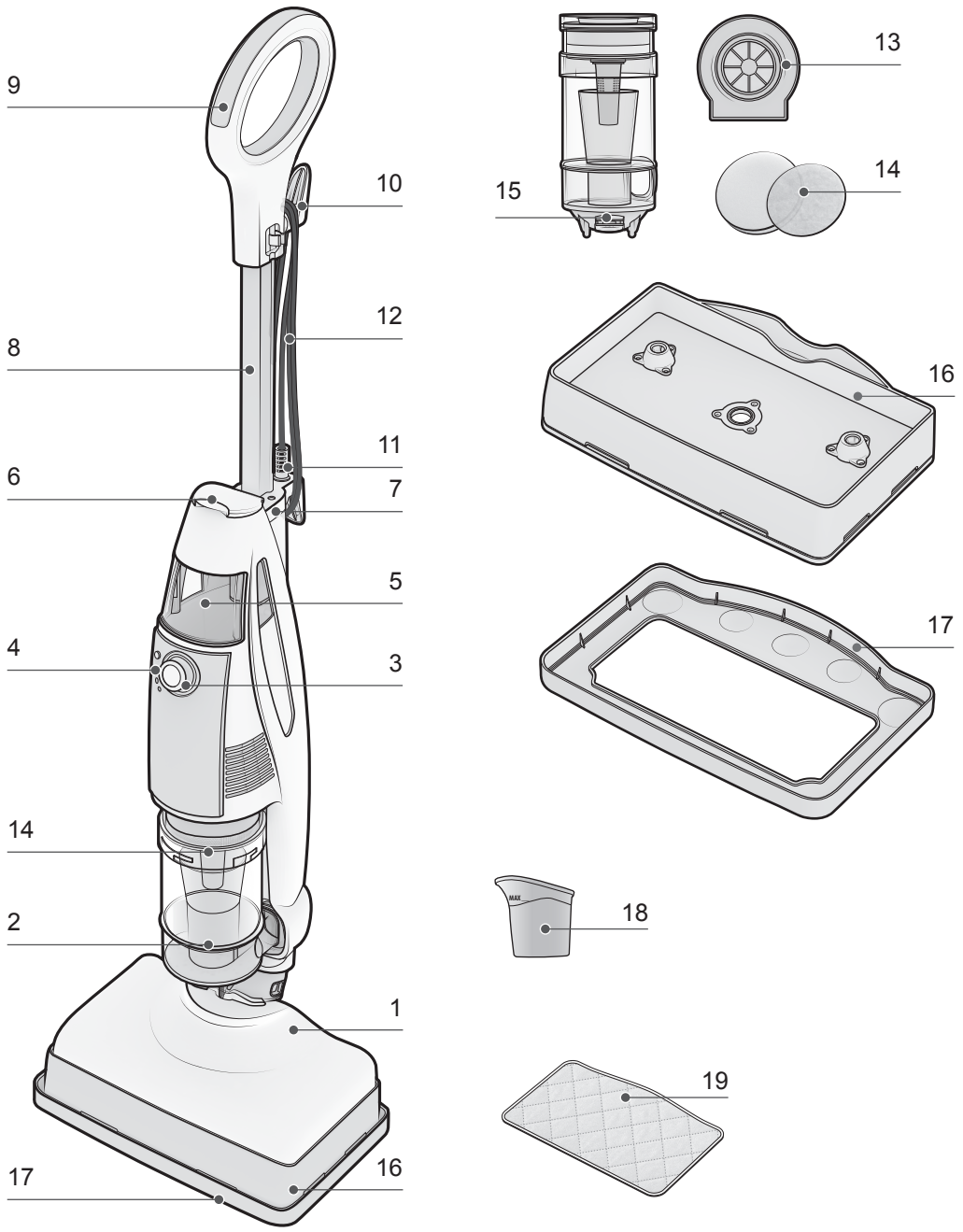




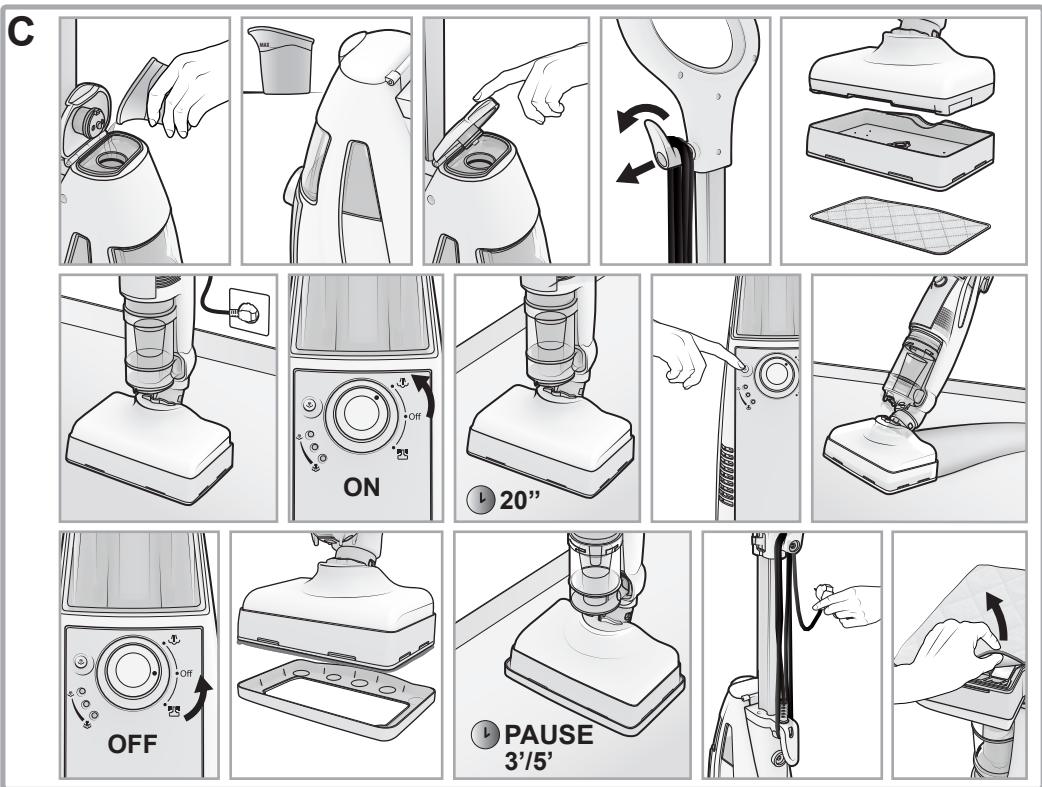
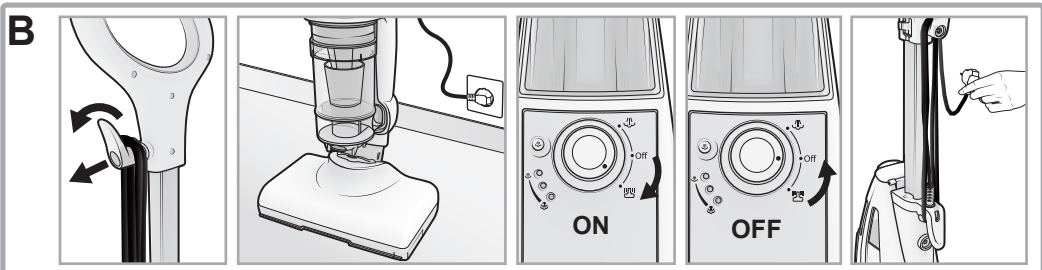
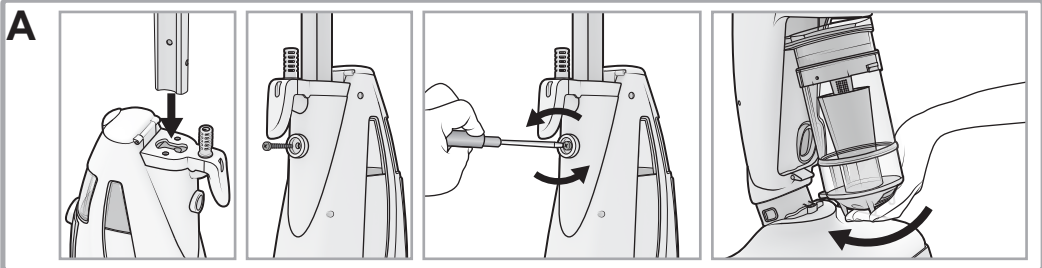
 **Hotpoint**

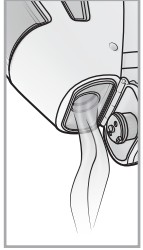
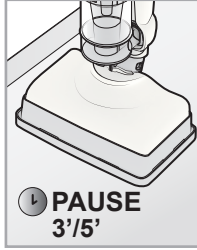
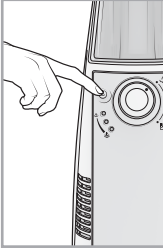
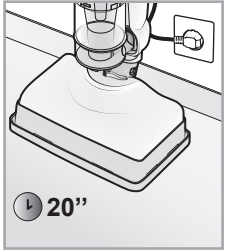
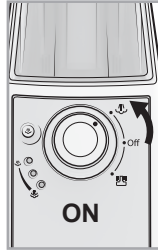
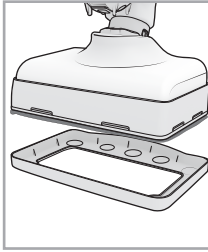
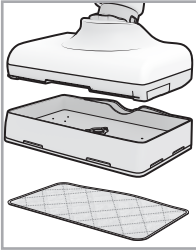
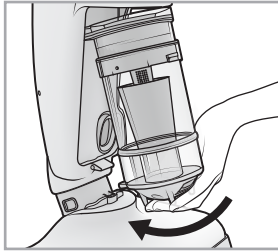
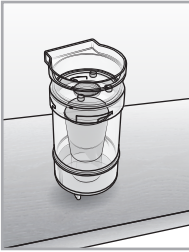
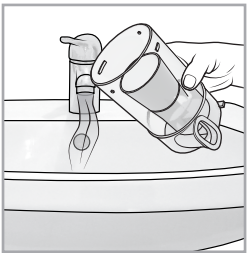
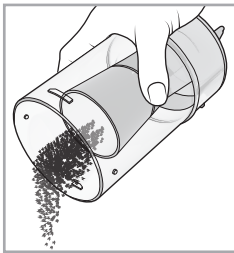
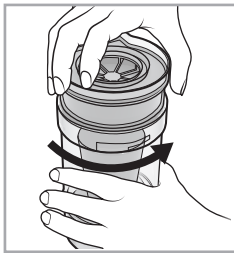
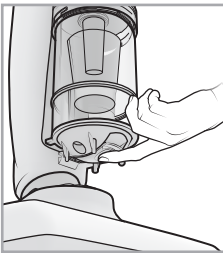
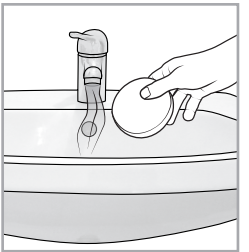
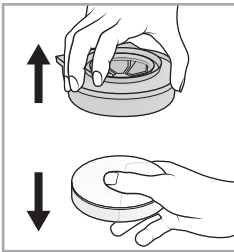
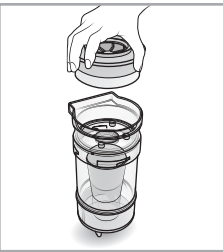
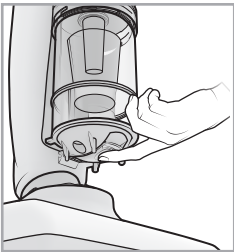


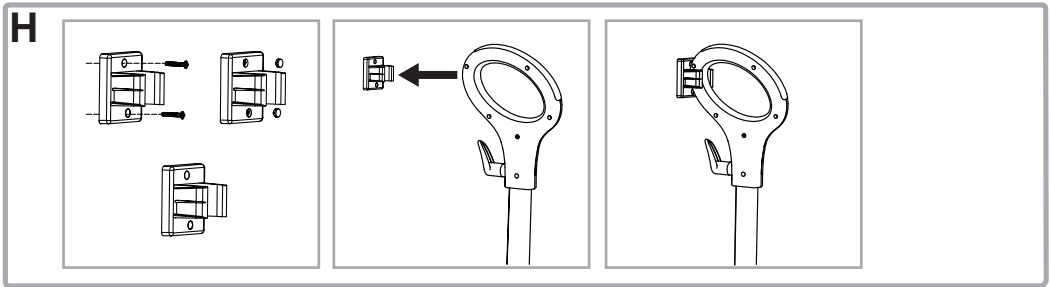
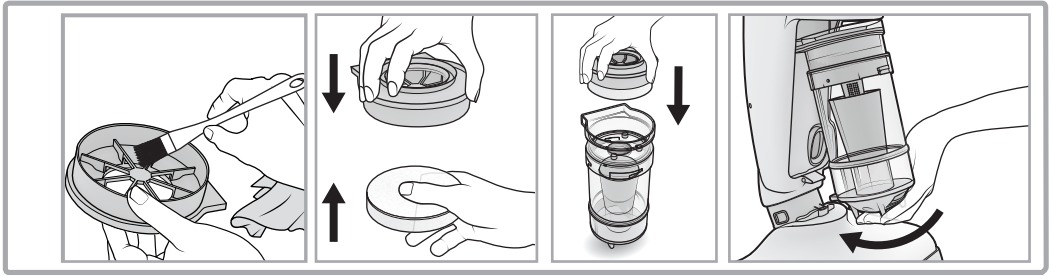
EN Operating Instructions



VS S15 AAW UK



D**E****F**



en GENERAL SAFETY INSTRUCTIONS


- This appliance must not be used by children.
- Keep the appliance and its cord out of reach of children.
- This appliance can be used by children aged from 8 years and above and persons with reduced physical, sensory or mental capabilities or lack of experience and knowledge if they have been given supervision or instruction concerning use of the appliance in a safe way and understand the hazards involved.
- The equipment was designed for household and similar uses such as in:
 - staff kitchen areas in shops, offices and other work environments;
 - farm houses;
 - hotels, motels and other residential environments by the guests;
 - bed&breakfast-type environments.
- Supervise children to prevent them from playing with the appliance.
- Turn unit off and unplug from socket when not in use, before putting on or taking off parts, and before cleaning. To disconnect, turn unit off, grasp plug, and pull out from wall socket. Never pull on cord.
- Do not operate any appliance with a damaged cord or plug or after the appliance malfunctions or has been damaged in any manner. Return the appliance to an authorized service facility for examination, repair, or electrical or mechanical adjustment.
- Do not leave the appliance unattended while it is running.

DEVICE DESCRIPTION

1. Brush
2. Dust container
3. Power electronic regulator
4. Steam selection button
5. Tank
6. Tank lid
7. Pipe housing handle
8. Pipe handle
9. Handle
10. Top cable-winder support
11. Bottom cable-winder support
12. Power cable
13. Filter grid
14. Filters
15. Dust container release button
16. Steam cleaning tool
17. Carpets tool
18. Filling bottle
19. Cloth for everyday cleaning
20. Wall support


INTRODUCTION

Welcome to Floor Care by Hotpoint-Ariston. We would like to thank you for purchasing this device. Please register it on www.hotpoint.eu to get the full benefits of Hotpoint-Ariston support.

 **Before you start using this device, you should carefully read these instructions; please store them for future reference.**

GENERAL SAFETY CONDITIONS

The security of your device is in line with technical specifications and current laws. Never use this device for other aims than those for which it was produced. An improper use could lead to injuries to people and/or damages to things.

 **The voltage of your system must correspond to the voltage of the device (220-240 V). Any connection mistakes can cause irreparable damage to the device, thus voiding its warranty.**


- Please do not pull or transport the device by pulling its power cable.
- After every use, please unplug it from the wall socket by taking the plug. Please wind the cable.
- Never pull out the plug by pulling the power cable.
- Do not bend the power cable. Keep it far away from sharp edges or corners to avoid damaging it.

- Never leave and never use the device on or close to flames, ovens, inflammable materials or other heat sources.
- Should you suspect the presence of a fault, please immediately unplug




BURNS DANGER.

Please pay attention while using the device. The emitted steam is extremely hot.

 **The hot steam deposits like a film on the clean floor. Before the steam dries up, you risk slipping and falling.**

- Do not walk on surfaces which have just been cleaned before they are dry.
- Do not force the plug into the wall socket.
- Do not use extension leads or cables with an unsuitable length.

 **Please only use tools recommended by the producer**

- The following uses are forbidden:
 - using the device as humidifier or as heater,
 - on surfaces which can get in touch with food,
 - on walls, shelves, windows and beyond your head's height,
 - without the cleaning cloth
 - in the open air.
- To protect against fire or electric shocks:
 - A) Never immerse the device in water or other liquids.
 - B) Don't handle the plug or other devices with your hands or with bare feet.
 - C) In order to avoid overloads to the electric system, do not plug another device to the same wall socket.
 - D) Do not try to unmount or repair this device. A wrong assembly operation can cause danger of electric shock or damages to people when using the device.
 - E) Never aim the device towards electric devices, wall sockets, cables, etc. or inside ovens. While using the device, please respect the minimum distance from wall sockets or similar devices installed on the floor.
- Please always keep a well-lit working area.
- Only use flat and horizontal surfaces.
- Please make sure there are no body parts stuck under the device.
- Please pay attention especially when the device is used close to children, plants and animals.

- Never aim the device towards people, animals or plants.
- While using the device, please do not turn it upside down or put it on its side.
- Never clean floors which are contaminated by substances which are dangerous for your health. The steam heat can cause the evaporation of these substances.
- Do not insert objects into the holes. Do not use the device if the holes are obstructed.
- Do not insert hands or feet under the device, as it heats up a lot.
- Do not use the device to clean tanks under pressure or containers unless you know what's inside them. Risk of burst or explosion.
- Please position the cloth on the base before you start using the device in steam mode.
- Do not start the device in steam mode if the tank is empty.
- Do not insert hot water, detergents, fragrances, oils or other chemical agents in the tank, as they can damage the device or make it unsafe to use.
- Please carefully remove the microfibre cloth only after unplugging the plug and letting the device cool down (this takes about 3-5 minutes).
- Always unplug the plug before you start cleaning your device; after this, please use a dry or wet cloth for the cleaning procedure. Do not use alcohol, benzene or thinners during cleaning in order to avoid aesthetic damages.
- Please store the device in a closed area, which is cool and dry at the same time.
- Do not store the device with a wet or soaked cloth. The residual humidity can cause strong odours or mould build-up.
- During the steam-cleaning process, do not spend too much time on the same position, as this could damage the floor.
- Please make sure there is a suitable ventilation during and after use.
- Never use the device without filters.
- After every use, please unplug the plug from the wall socket by taking the plug. After this, please wind the power cable.
- For security reasons, when cleaning the stairs, we recommend to always keep the device below where you are.
- Keep suction devices far from the body when the device is working.
- Never spray liquid substances on the device.
- The device must not be left outside and exposed to severe weather conditions.
- Do not inhale inflammable materials or extremely

hot objects (ashes, cigarette butts); some parts of the device could catch fire.

- Do not inhale sharp or cutting objects, as they could damage the device.
- For your safety, any repair or operation on the device must only be carried out by Hotpoint-Ariston authorized personnel.
- Do not use the machine on surfaces on which flammable solids or liquids are present (such as hydrocarbons, ash, soot).
- Do not use floor wax.
- Do not fill the tanks with acids, solvents, flammable substances or other liquids which may damage the mechanical parts and generate toxic vapours.
- Do not use detergent solutions with temperatures above 40°C.
- Do not use the machine in environments where the vapours of flammable substances, paints or solvents persist and where flammable powders are in suspension.
- Do not use the machine over power sockets set into floors.



No responsibility is assumed in case of damage caused by an improper use of the device. The device is suitable to the current regulations. It can inhale small quantities of liquid. Your device was designed to clean hard floors which resist to high temperatures. Do not use on wooden unsealed floors and on floors made on non-enamelled ceramic floors. The action of both heat and steam could remove the brightness on floors previously treated with wax. We always recommend to test your device on an isolated area of the floor before you use it on the whole surface. Please check the usage and maintenance instructions given by the producer of your floor.

BEFORE USE



The product is inspected with different tests before it is produced and sold in order to guarantee a higher level of quality. This is the reason why it's normal to find some water drops in the tank when you open the box.

Please remove all stickers, protective plastic or carton boxes from the device itself. Please make sure all stickers get removed with a soft wet cloth.

Mounting (A)

Please mount the device as follows:


1. Insert the handling pipe (8) in the pipe housing handle (7) until it stops.


- Insert the fixing screw and firmly fasten it.
- Insert the dust container (2) in its housing, by positioning first in the upper part and then in the lower part until you hear the click of "closing complete".

USE OF THE VACUUM MODE (B)


 **Do not use the device without filters (14) or without the dust container (2), as it could get damaged.**

- Unwind the power cable (12) and insert the plug of the device in a wall socket (220-240V).


 **Before you connect the device to the electrical plug, please unwind all the power cable to avoid its heating up and avoid damaging it.**


- Use the device with one brush only (1).
- Turn the power electronic regulator clockwise (3) in order start the device in vacuum mode. Position the power electronic regulator so that it is in line with the symbol. 
- In order to turn off the device, please turn the power electronic regulator anticlockwise by positioning it in line with the Off symbol.
- Wind the cable around the top cable-winder support (10) and the bottom cable-winder support (11).


USING THE STEAM MODE (C)

 **Never use the device without a cloth as this could damage the device itself as well as the floor.**

 **Unplug the plug before you fill in the tank.**


- Open the tank lid (6).
 - Use the filling bottle (15) to fill the tank (5).
-  The "MAX" level which is shown on the bottle corresponds to the maximum capacity of the tank (550 ml). Do not overfill the tank.


 In order to guarantee a safe usage of the device, please do not add chemicals to the tank.

 In order to extend the device working life, if you live in an area with an high level of water hardness, please mix tap water with de-mineralized water according to the data provided in the following table:


Water hardness [°f]	Ratio [Tap water : de-mineralized water]
<25° f	1:0
25°f – 35°f	2:1
35°f – 50 °f	1:1
50°f – 75°f	1:2
>75°f	0:1


- Carefully close the tank cover (6).
- Pull and turn the top cable-winder support to completely unwind the cable.


 Before you connect the plug to the wall socket, please completely unwind the power cable in order to avoid its overheating or to avoid damaging it.

 It could be useful to vacuum the floor before you use the device in steam mode.


- Please position the cloth under the steam cleaning tool (16) and then the device on it.
- Connect the plug to the wall socket (220-240V).
- Turn the power electronic regulator anticlockwise (3) in order start the device in steam mode. Position the power electronic regulator so that it is in

line with the symbol 

 Before you start using the device, wait for it to heat up (20 seconds).

- Select the amount of steam you want (according to the surface to be cleaned) by acting on the steam selection button (4) 


- Move the device as if were a standard brush.

 The device emits steam only when it is not in its rest position; this is particularly useful to limit steam emissions thus avoiding to damage delicate surfaces (such as parquets) during interruptions.

Quando pulite superfici delicate vi raccomandiamo di utilizzare una quantità di vapore bassa. When cleaning delicate surfaces please use a limited amount of steam.

Please use a large amount of steam to remove persistent stains.


- In order to turn off the device, please turn the power electronic regulator clockwise by positioning it in line with the Off symbol.
- Let the device cool down for about 3-5 minutes on the carpets tool (17) before you put it back.

 **After being used, the device is hot and the cloth is wet. Pay attention! Do not damage delicate floors!**

- Wind up the cable.
- Remove the cloth.


 **Never store the device with the wet cloth on it. The residual humidity can cause strong**


odours or mould build-up.


 Should you decide not to use the device for a long time, please empty the tank before you store the device.


CARPETS CLEANING (D)


 **Do not use the device without applying the cloth on the base of the main brush.**

 **Before using the device, please remove any residual dirt.**

1. Please apply the cloth on the suitable steam cleaning tool (16) and connect everything to the main brush (1).
2. Unwind the power cable (12) and insert the plug of the device in a wall socket (220-240V).
3. Position the device on the carpets tool (17).
4. Select the steam mode by turning the power electronic regulator anticlockwise (3) in order start the device in steam mode. Position the power electronic regulator so that it is in line with the symbol .


 Before you start using the device, wait for it to heat up (20 seconds).


5. Select the amount of steam you want (according to the surface to be cleaned) by acting on the steam selection button (4) .
6. In order to turn off the device, please turn the power electronic regulator clockwise by positioning it in line with the Off symbol.
7. Let the device cool down for about 3-5 minutes on the carpets tool (17) before you put it back.

 **After being used, the device is hot and the cloth is wet. Pay attention! Do not damage delicate floors!**


8. Wind up the cable.

9. Remove the cloth.


 **Never store the device with the wet cloth on it. The residual humidity can cause strong odours or mould build-up.**

 Should you decide not to use the device for a long time, please empty the tank before you store the device.

CLEANING AND MAINTENANCE

 Before carrying out cleaning and maintenance procedure, make sure you unplugged the device from the wall socket. To clean the device and the tools, as well as their internal components, do not use aggressive

substances or abrasive materials.



 **Make sure that all components are perfectly dry before you remove them.**

Cleaning the device

Use a soft dry cloth, or lightly wet cloth to clean the plastic components as well as the handling; make sure they are totally dry before using them again.

Do not use any aggressive or abrasive detergent and don't use hard brushes.

Cleaning of the dust container (E)


1. Extract the dust container (2) by pressing the dust container release button (15).
2. Turn the upper part of the dust container anti-clockwise to access the dust container.
3. Open the lid and empty the dust container.
4. Remove any dirt residues, by washing the container under running water.
5. Let it dry completely at room temperature, as long as all its components are totally dry.
6. Close the dust container lid until it clicks; make sure the symbol  is in line with the symbol .
7. Please re-position the dust container in its housing, by positioning first in the upper part and then in the lower part until you hear the click of "closing complete".

Filters cleaning (F)

1. Extract the dust container (2) by pressing the dust container release button (15).
2. Pull out the filter grid (13).
3. Remove the two filters from the dust container (14).
4. Continue the filters cleaning process by washing them under running water; please avoid strong water jets; please squeeze filters softly.
5. Please clean the filter grid, and remove dust residues with a small brush; should this be necessary, please use a wet cloth.
6. Replace the filters in the dust container.
7. Slide back the filter grid and pay attention in order to insert it correctly in its space on the dust container.
8. Please re-position the dust container in its housing, by positioning first in the upper part and then in the lower part until you hear the click of "closing complete".

 **Please clean the filters every time you empty the dust container.**

Laundry washing (G)

 Please replace the “Cloth for everyday cleaning” (19) at least once a month.

1. During the first use, please wash the cloth in the washing machine and let it dry in the open air.
2. Please wash you microfibre cloth in order to stop other clothes from attracting fluff.
3. Please only use liquid detergents. Never use softeners or bleach. Let dry in the open air. Do not dry inside the drum. Do not iron.



4. Should you see fluff on the microfibre, please cut them carefully with some scissors. Do not pull them or cut them in the base.

Wall support (H)

To ensure a secure storage, you can lock the device to the wall using the wall support (20).

1. Fix the support to the wall at the height of the device's handle.
2. Fit the device's handle in the wall support.

ACCESSORIES

Cloth for everyday cleaning (19)

This cloth was designed for everyday cleaning operations on all types of floors. It rapidly dries after the washing

Carpets tool

The carpets tool (17) allows you to use the device on carpets, in order to clean them and disinfect them. Position the device with the cloth installed on the carpets tool.

PRODUCT TECHNICAL SPECIFICATIONS

Model	Rating	Frequency	Power	T a n k capacity
SM S15 CAW	220-240V~	50Hz	1550W	250ml
Performance standards	EN IEC60335-1:2012; EN60335-2-10: 2002+A12008; EN60335-2-54:2008+A11:2012; EN55014-1:2006+A1; 2009+2011; EN55014-2:1977+A1:2001+A22008 EN61000-3-2:2006+A1:2009+A2:2009; EN61000-3-3:2013			

GUARANTEE

**12 months Standard Guarantee
Enhanced to 2 years upon product registration**

This certificate of guarantee represents the guarantee (“Guarantee” hereinafter) offered by Indesit Company UK Limited with registered office at Peterborough PE2 9JB in relation to products purchased in the United Kingdom and Indesit Ireland Limited with registered office in Dublin 9, Ireland for products purchased in the Republic of Ireland. This Guarantee does not affect your statutory rights.

Your product has the benefit of our manufacturer's Guarantee, which covers the product for twelve months from the date of purchase.

This gives you the reassurance that if, within that time, your product is proven to be defective because of either workmanship or materials, we will, at our discretion, either repair or replace the product at no cost to you.

This Guarantee is subject to the following conditions:

- Documentary proof of original purchase date is provided.
- Cosmetic damage must be reported within 14 days from the date of purchase.
- The product has been installed and operated correctly and in accordance with our operating and maintenance instructions.
- The product is used only on the electricity supply printed on the rating plate.
- The product has been used for normal domestic purposes only.
- The product has not been altered, serviced, maintained, dismantled, or otherwise interfered with by any person not authorised by us.
- Any repair work must be undertaken by us or our appointed agent.
- Any parts removed during repair work or any product that is replaced become our property.
- The product is used in the United Kingdom or Republic of Ireland.

The Guarantee does not cover:

- Damage resulting from transportation, improper use, neglect or interference or as a result of improper installation.

- Accidental damage, this includes but is not limited to, damage which occurs as a result of an external action.
- Replacement of any consumable item or accessory. These include but are not limited to:
- plugs, cables, light bulbs, hoses, brushes, covers and filters.
- Replacement of any removable parts made of glass or plastic.

After Sales Service

No one is better placed to care for your Hotpoint product during the course of its working life than us – the manufacturer.

Essential Contact Information Advice Line

We have a dedicated team who can provide free advice and assistance with your product if you experience any technical difficulties. Simply call our Hotpoint Service Hotline for telephone assistance.

UK: 03448 240 055

Republic of Ireland 0818 904 041

www.hotpointservice.co.uk


Please note:

Our advisors will require the following information:

Model number:

Serial number:

This information is available on the service label stuck on the back cover of this user manual.

Model number	
VS S15 AAW	XT 89913 0000
	
S/N YMMDDXXXX	00899130000
Serial number	

Consumables and Accessories

We supply a full range of consumables and accessories to keep your product functioning efficiently throughout its life.

UK: 03448 225 225

Republic of Ireland: 0818 313 413
parts.hotpoint.co.uk/shop

Recycling and Disposal Information

As part of Hotpoint's continued commitment to helping the environment, Hotpoint reserves the right to use quality, recycled components to keep down customer costs and minimise material wastage.

Please dispose of packaging and old products carefully.

Register your new product and receive 1 additional year FREE!

As an additional benefit of owning your Hotpoint product, we are offering 1 years additional free guarantee. To be eligible for this you will need to contact us to register your product within 28 days of purchase. If you do not register your appliance within the 28 days you will still be entitled to 1 years manufacturer's guarantee. To activate your 2 year guarantee register online at www.hotpoint.co.uk. Please note that the extended guarantee is only available in the UK and Ireland and is subject to the same terms and conditions as the 1 year guarantee. Please refer to the certificate of guarantee for more information.

DISPOSAL OF OLD ELECTRICAL APPLIANCES



The European Directive 2012/19/UE on Waste Electrical and Electronic Equipment (WEEE), requires that old household electrical appliances must not be disposed of in the normal unsorted municipal waste stream.

Old appliances must be collected separately in order to optimise the recovery and recycling of the materials they contain and reduce the impact on human health and the environment.



The crossed out "wheeled bin" symbol on the product reminds you of your obligation, that when you dispose of the appliance it must be separately collected. Consumers should contact their local authority or retailer for information concerning the correct disposal of their old appliance.

TROUBLESHOOTING

Problem	Possible causes / solutions
The device won't turn on	<ul style="list-style-type: none"> • Maybe the plug is not inserted, or maybe it is not in contact. • Check the fuse or the switch. • Check that the power electronic regulator is not set on Off. • Check if the LED is on.
The suction power is low.	<ul style="list-style-type: none"> • Clean filters. Should this be necessary, please replace them. • Please make sure that the brush and the suction tubing are not obstructed. • Please clean the dust container and its filters.
The vacuum emits a hissing sound or it vibrates when in use.	<ul style="list-style-type: none"> • One or more tools were not mounted correctly. Please check that the filters, the dust container and the brush were mounted according to the most updated instructions. • The dust container is still full. Please clean the dust container. • Clean filters. Should this be necessary, please replace them.
The device does not emit steam.	<ul style="list-style-type: none"> • Check if there is water in the tank. • The steam temperature is not high enough. After turning on the device, please wait 20 seconds until it heats up. • For your safety, the steam is emitted only if the device is not in its rest position. Try and move the device from its rest position.
The device leaves some water traces on the floor.	<ul style="list-style-type: none"> • Please check if the cloth is not excessively wet. • The steam temperature is not high enough. After turning on the device, please wait 20 seconds until it heats up.
The floors are not really bright, they are too streaked or stained after the cleaning process.	<ul style="list-style-type: none"> • The cloth could be too dirty. Turn off the device by disconnecting the plug from the wall socket and replace the cloth. • If you wash the cloth with powder detergent, the dust could remain trapped in the cloth. Please wash the cloth with liquid detergents. • If you have to clean a floor with persistent stains, please spread a chemical detergent on the floor, and then wash with the device. • After washing with a chemical detergent, there could be some residues on the floor. Wash again the floor with the device.
The device is hard to move.	<ul style="list-style-type: none"> • Make sure the cloth is correctly positioned. • Please check if the cloth is not excessively dirty; should this be the case, please replace it.



Indesit Company UK Ltd
Morley Way,
Peterborough PE2 9JB

www.indesitcompany.com

Wet & dry UK
04/2015 - ver. 2.0