

PHILIPS

Valve

Philips Avent

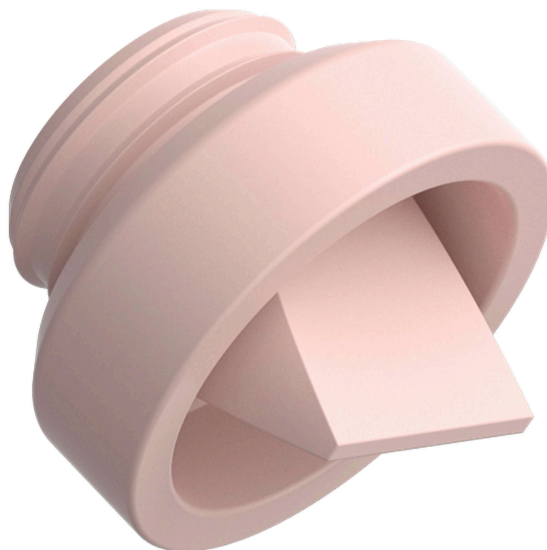
Breast pumps

Pink

Philips Avent Hands-free electric
breast pump

We recommend checking your
breast pump's valves regularly to
keep the valves in good
condition.

CP2203



Transfers breast milk from breast to collection cup

Check for compatibility below

This valve maintains the vacuum and helps breast milk to pass from pump to bottle. If your breast pump's suction strength is low, check the valve for damage and whether or not it is fully closed. Replace the valve for a properly functioning pump.

Specifications

Replaceable part

Fits product types: SCD553, SCF439, SCF442,
SCF481, SCF531, SCF532, SCF533, SCF534,
SCF537, SCF539, SCF543, SCF547

