


Dell Pro 14 Plus Portable Monitor P1425

Teardown Instruction

Notes, cautions, and warnings

 **NOTE:** A NOTE indicates important information that helps you make better use of your product.

 **CAUTION:** A CAUTION indicates either potential damage to hardware or loss of data and tells you how to avoid the problem.

 **WARNING:** A WARNING indicates a potential for property damage, personal injury, or death.

Chapter 1: Safety Instructions	4
Before working inside your monitor	5
After working inside your monitor	5
Chapter 2: Disassembly and reassembly	6
Recommended tools	6
Screw list	6
Sleeve	7
Removing the sleeve	7
Installing the sleeve	7
Bottom base cover	8
Removing the bottom base cover	8
Installing the bottom base cover	10
Main board	11
Removing the main board	11
Installing the main board	13
Auto-rotation sensor board	16
Removing the auto-rotation sensor board	16
Installing the auto-rotation sensor board	17
Hinge	19
Removing the hinge	19
Installing the hinge	20
Power button	22
Removing the power button	22
Installing the power button	23
Function button	24
Removing the function button	24
Installing the function button	25
Chapter 3: Contacting Dell	26

Safety Instructions

Use the following safety guidelines to protect your monitor from potential damage and to ensure your personal safety. Unless otherwise noted, each procedure included in this document assumes that you have read the safety information that shipped with your monitor.

NOTE: Before using the monitor, read the safety information that is shipped with your monitor and printed on the product. Keep the documentation at a secure location for future reference.

WARNING: Use of controls, adjustments, or procedures other than those specified in this documentation may result in exposure to shock, electrical hazards and/or mechanical hazards.

CAUTION: The possible long-term effect of listening to audio at high volume through the headphones (on supported monitors) may damage your hearing ability.


- Place the monitor on a solid surface and handle it carefully. The screen is fragile and can be damaged if dropped or hit with a sharp object.
- Ensure that your monitor is electrically rated to operate with the AC power available in your location.
- Keep the monitor in room temperature. Excessive cold or hot conditions can have an adverse effect on the liquid crystal of the display.
- Connect the power cable from the monitor to a wall outlet that is near and accessible. See Connecting the cables.
- Do not place and use the monitor on a wet surface or near water.
- Do not subject the monitor to severe vibration or high impact conditions. For example, do not place the monitor inside a car trunk.
- Unplug the monitor when it is going to be left unused for an extended period.
- To avoid electric shock, do not attempt to remove any cover or touch the inside of the monitor.
- Read these instructions carefully. Keep this document for future reference. Follow all warnings and instructions that are marked on the product.
- Certain monitors can be wall mounted using the VESA mount that is sold separately. Ensure to use the correct VESA specifications as mentioned in the wall mounting section of the User's Guide.

For information about safety instructions, see the *Safety, Environmental and Regulatory Information (SERI)* document that is shipped with your monitor.

Before working inside your monitor

Steps

1. Save and close all open files and exit all open applications.
2. Turn off your monitor.
3. Disconnect your monitor and all attached devices from their electrical outlets.
4. Disconnect all attached network devices and peripherals, such as keyboard, mouse, and dock from your monitor.

 **CAUTION:** To disconnect a network cable, first unplug the cable from your monitor and then unplug the cable from the network device.

5. Remove any media card and optical disc from your monitor, if applicable.

After working inside your monitor

 **CAUTION:** Leaving any loose or misplaced screws inside your monitor may severely damage it.

Steps

1. Replace all screws and ensure that no stray screws remain inside your monitor.
2. Connect any external devices, peripherals, or cables you removed before working on your monitor.
3. Replace any media cards, discs, or any other parts that you removed before working on your monitor.
4. Connect your monitor and all attached devices to their electrical outlets.
5. Turn on your monitor.

Disassembly and reassembly

NOTE: The images in this document may differ from your computer depending on the configuration you ordered.

Recommended tools

- Phillips screwdriver #00




Screw list

NOTE: When removing screws from a component, it is recommended to note the screw type, the quantity of screws, and then place them in a screw storage box. This is to ensure that the correct number of screws and correct screw type is restored when the component is replaced.

NOTE: Some computers have magnetic surfaces. Ensure that the screws are not left attached to such surfaces when replacing a component.

NOTE: Screw color may vary with the configuration ordered.

Table 1 Screw list

Component	Screw type	Quantity	Screw image
Base bottom cover	M2x4	6	
Main board	M1.6x2.5	5	
Base top cover	M2x3	6	
Power button	M1.6x2.5	2	
Function buttons	M1.6x2.5	3	
Hinge	M2x3	6	

Sleeve

Removing the sleeve

Prerequisites

1. Follow the procedure in [Before working inside your monitor.](#)

Steps

1. Pull the monitor out from the sleeve.



Figure 1. Removing the sleeve

Installing the sleeve

Steps

1. Replace the monitor to the sleeve.



Figure 2. Installing the sleeve

Next steps

1. Follow the procedure in [After working inside your monitor.](#)

Bottom base cover

Removing the bottom base cover

Prerequisites

1. Follow the procedure in [Before working inside your monitor.](#)
2. Remove the [sleeve.](#)

Steps

1. Remove the six rubbers on the bottom base cover.
2. Remove the six screws (M2x4) that secure the bottom base cover.
3. Lift the bottom cover up from the monitor.

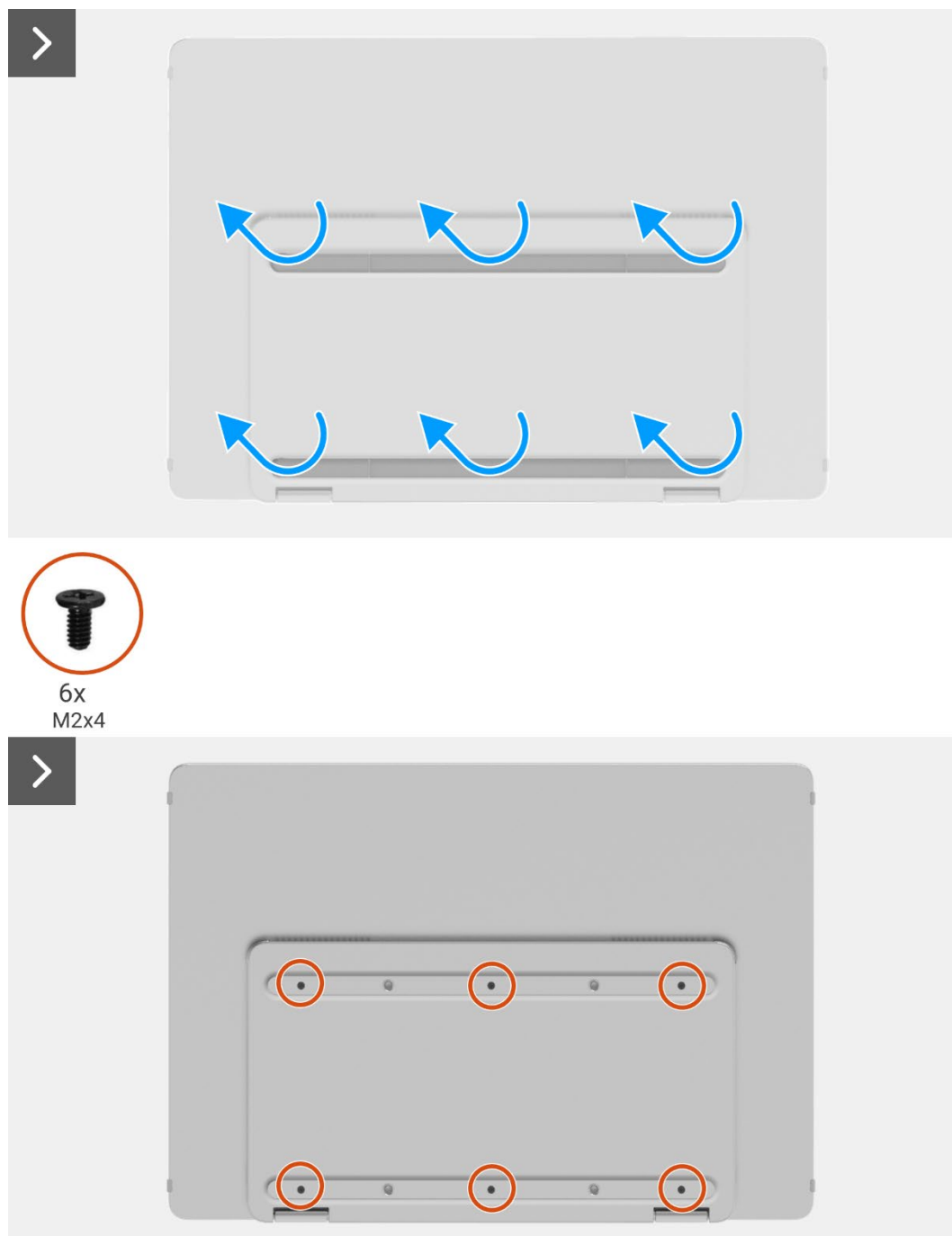


Figure 3. Removing the bottom base cover



Figure 4. Removing the bottom base cover

Installing the bottom base cover

Steps

1. Replace the six screws (M2x4) to secure the bottom base cover.
2. Adhere the six rubbers on the bottom base cover to cover the screws.

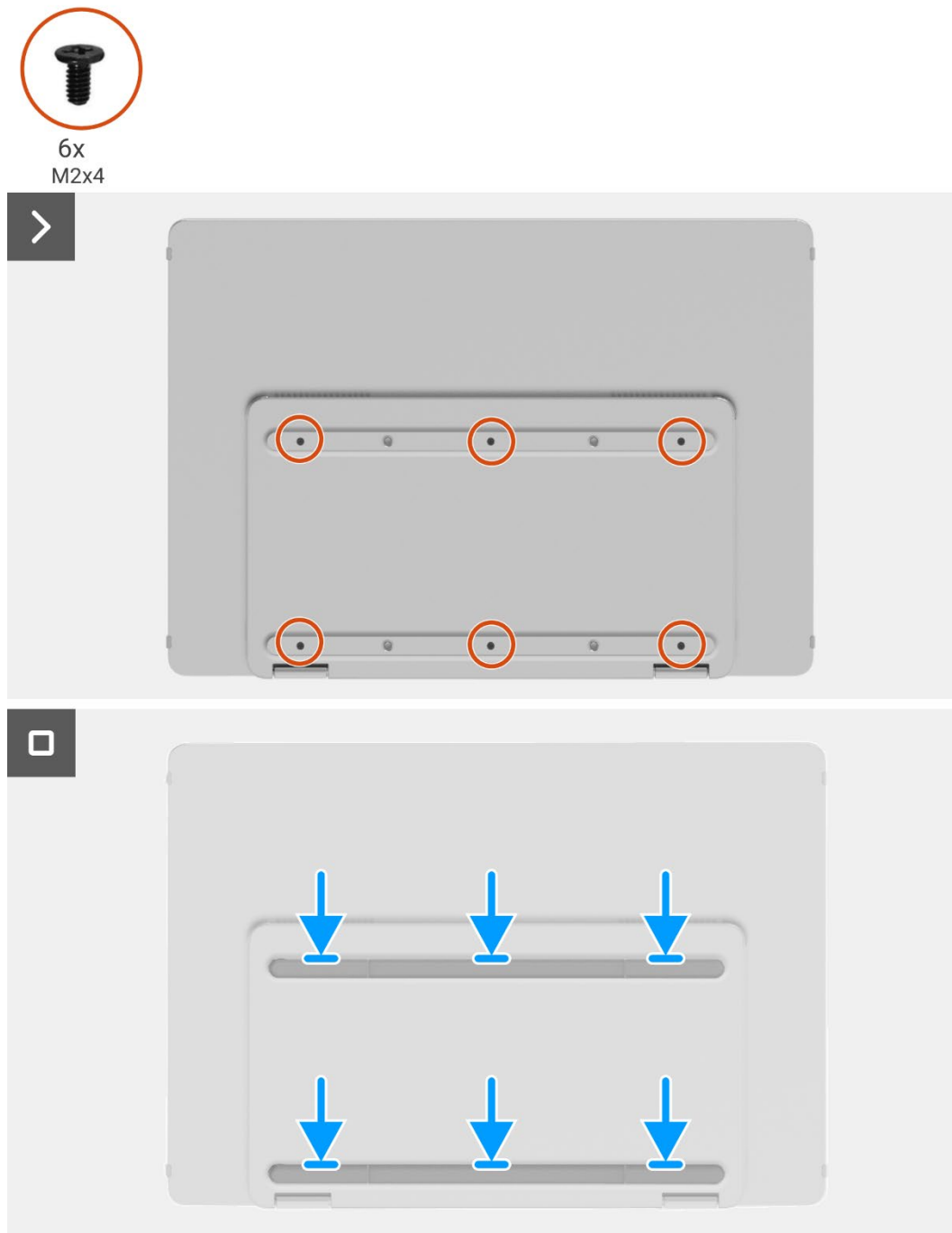


Figure 5. Installing the bottom base cover

Next steps

1. Install the [sleeve](#).
2. Follow the procedure in [After working inside your monitor](#).

Main board

Removing the main board

Prerequisites

1. Follow the procedure in [Before working inside your monitor](#).
2. Remove the [sleeve](#).
3. Remove the [bottom base cover](#).

Steps

1. Remove the five screws (M1.6x2.5) that secure the main board.
2. Pull the main board up and flip it over to make the connector visible.
3. Disconnect the auto-rotation sensor cable from the connector on the main board.
4. Open the latch and disconnect the eDP cable from the connector on the main board.



Figure 6. Removing the main board

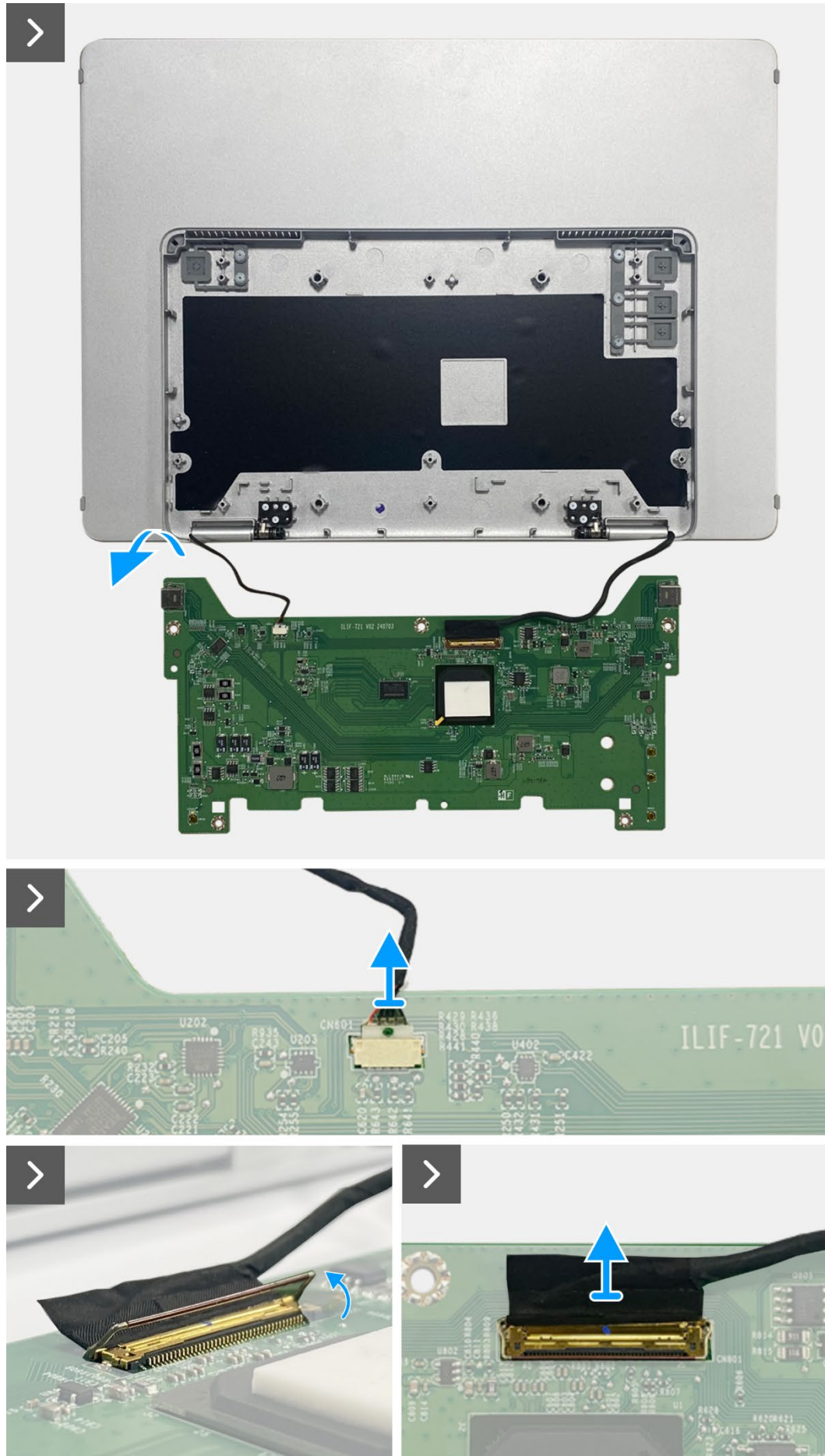


Figure 7. Removing the main board

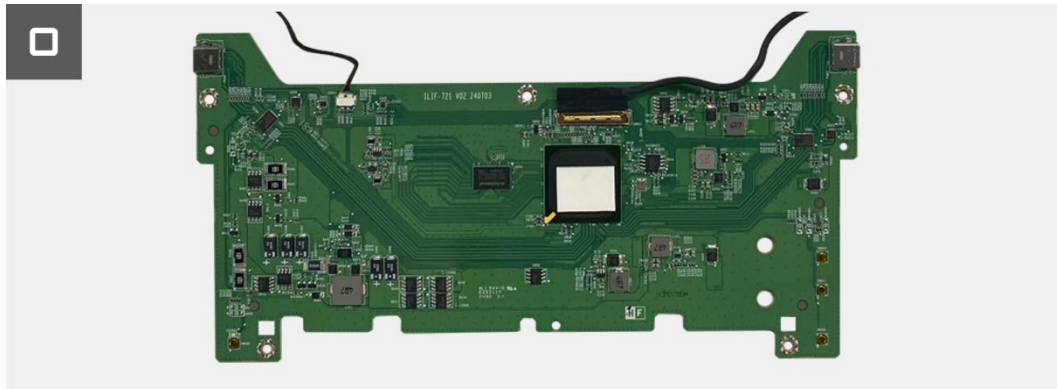


Figure 8. Removing the main board

Installing the main board

Steps

1. Connect the eDP cable to the connector on the main board.
2. Connect the auto-rotation sensor cable to the connector on the main board.
3. Flip the main board over and place it into the top base cover.
4. Replace the five screws (M1.6x2.5) to secure the main board with the top base cover.

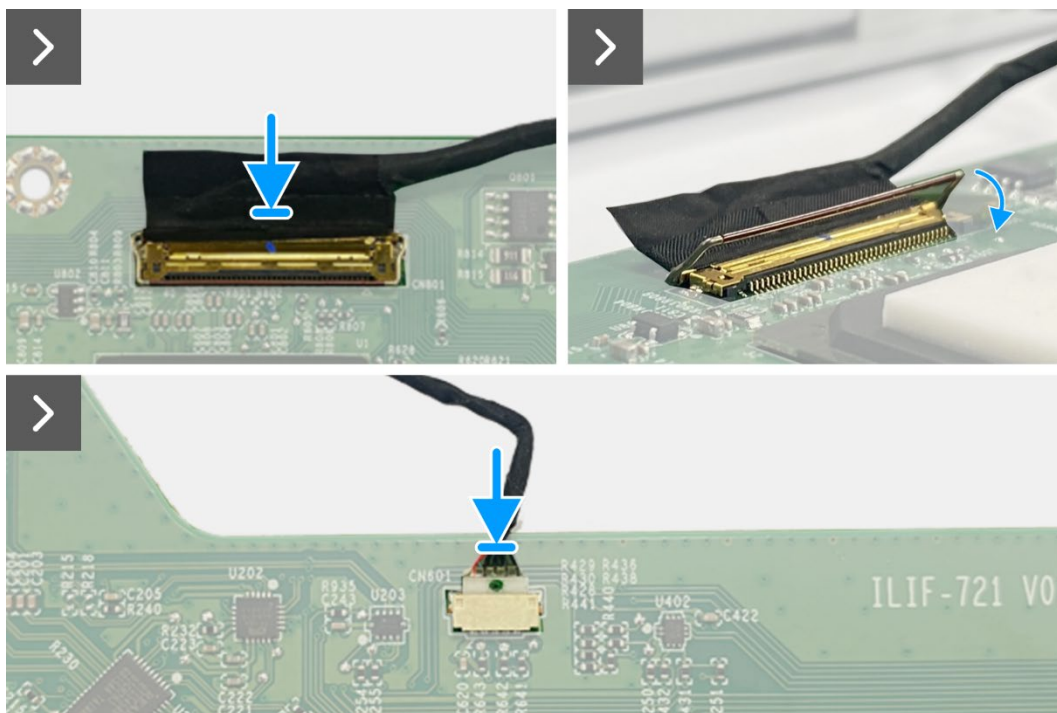
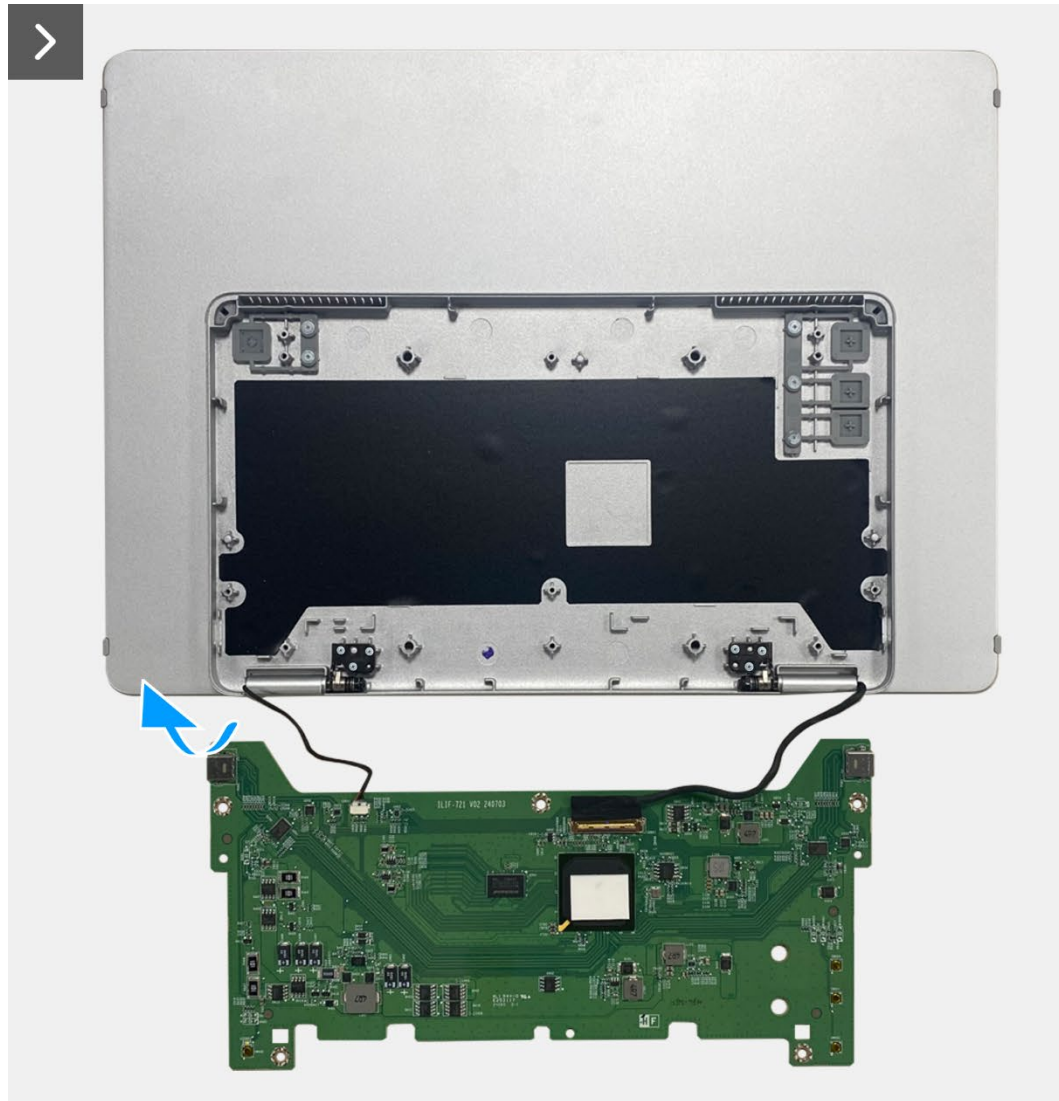


Figure 9. Installing the main board



5x
M1.6x2.5

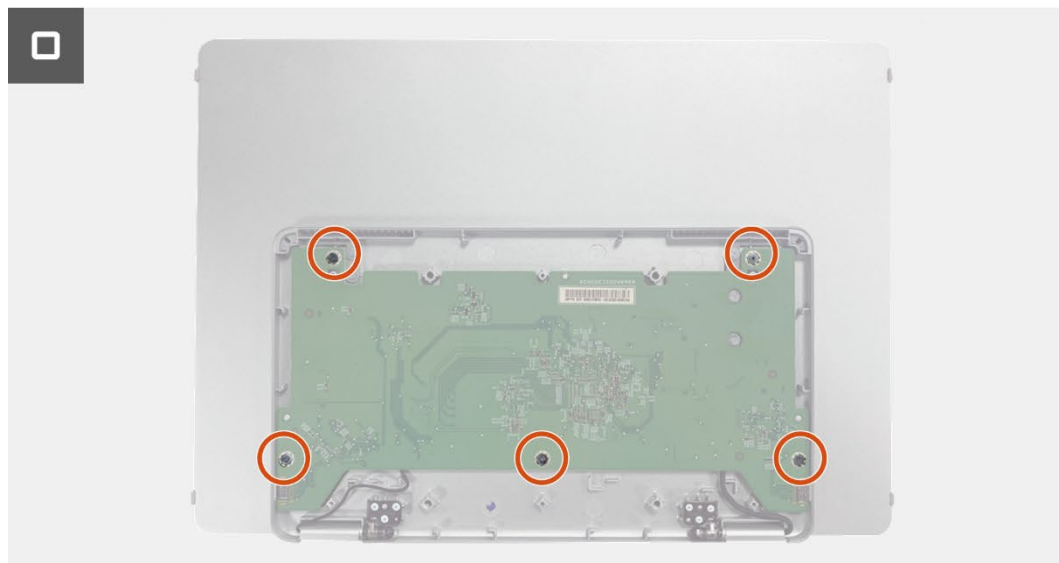


Figure 10. Installing the main board

Next steps

1. Installing the [bottom base cover](#).
2. Install the [sleeve](#).
3. Follow the procedure in [After working inside your monitor](#).

Auto-rotation sensor board

Removing the auto-rotation sensor board

Prerequisites

1. Follow the procedure in [Before working inside your monitor](#).
2. Remove the [sleeve](#).
3. Remove the [bottom base cover](#).
4. Remove the [main board](#).

Steps

1. Remove the front bezel from the back cover. (Can not rework without new adhesive.)
2. Tilt open the monitor base.
3. Pull the auto-rotation sensor board out from the back cover.
4. Disconnect the auto-rotation sensor cable from the connector on the auto-rotation sensor board.

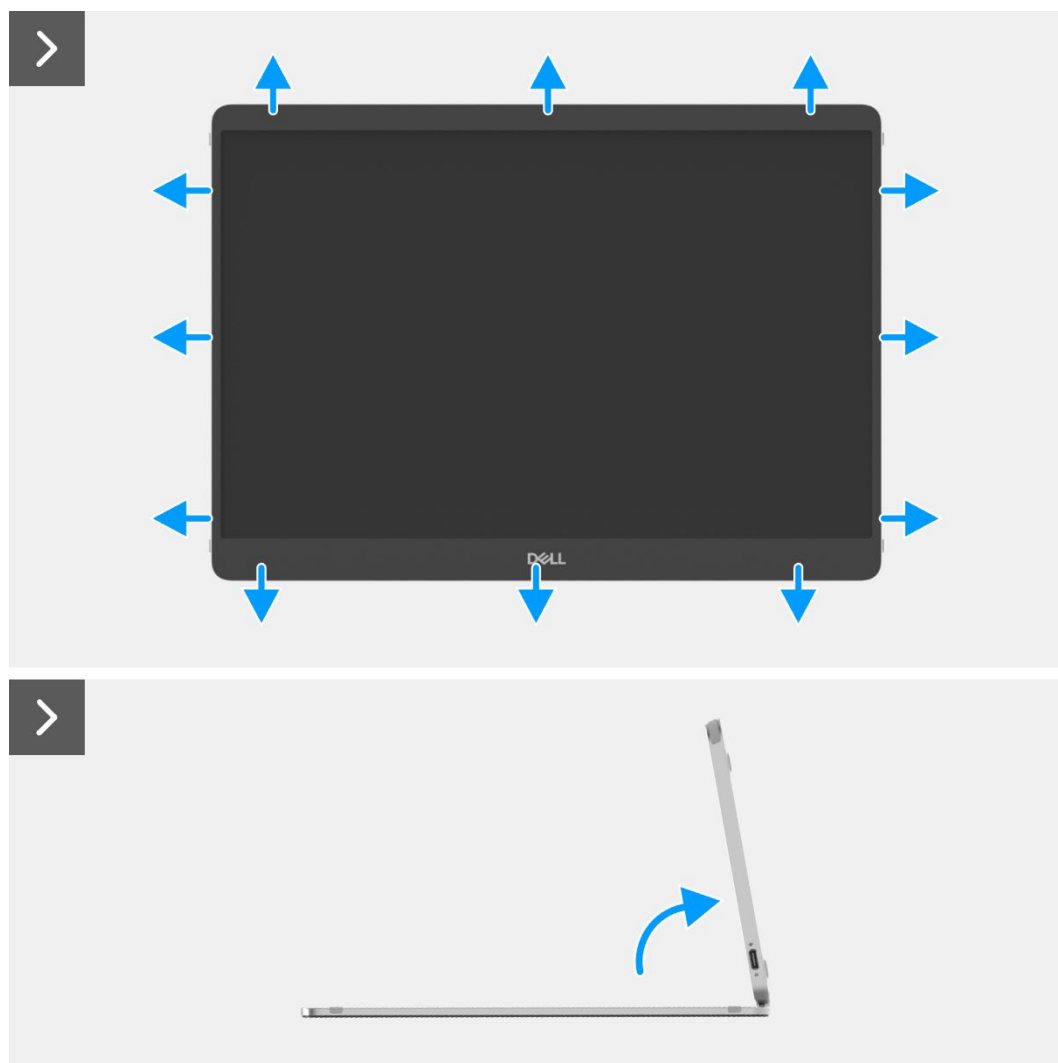


Figure 11. Removing the auto-rotation sensor board

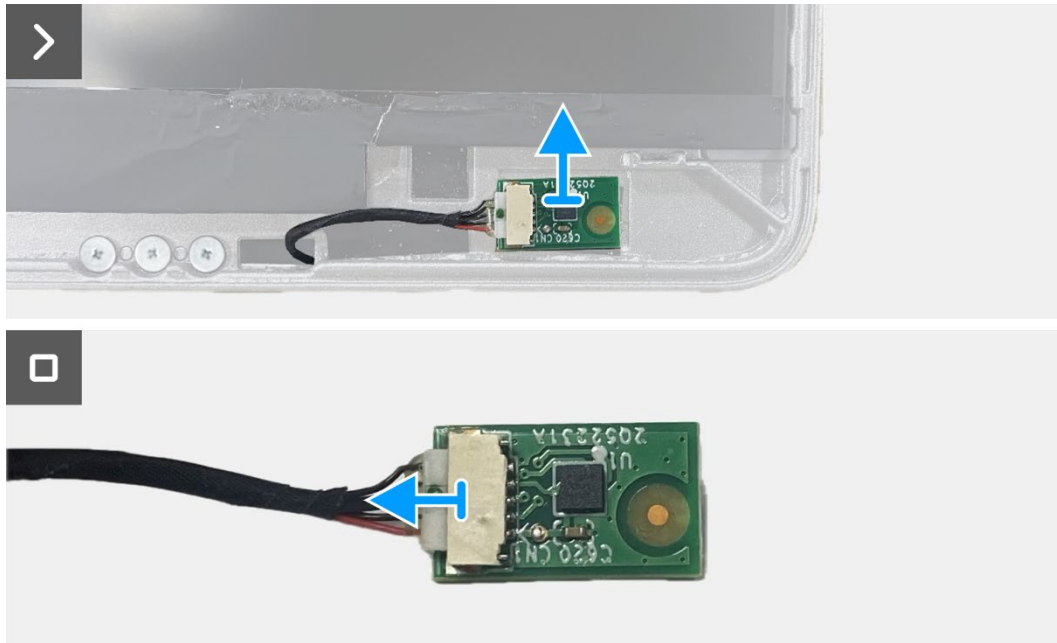


Figure 12. Removing the auto-rotation sensor board

Installing the auto-rotation sensor board

Steps

1. Connect the auto-rotation sensor cable to the connector on the auto-rotation sensor board.
2. Open the monitor base.
3. Make the auto-rotation sensor cable go through the hole between the back cover and the hinge.
4. Adhere the auto-rotation sensor board on the back cover.
5. Adhere the front bezel to the back cover.

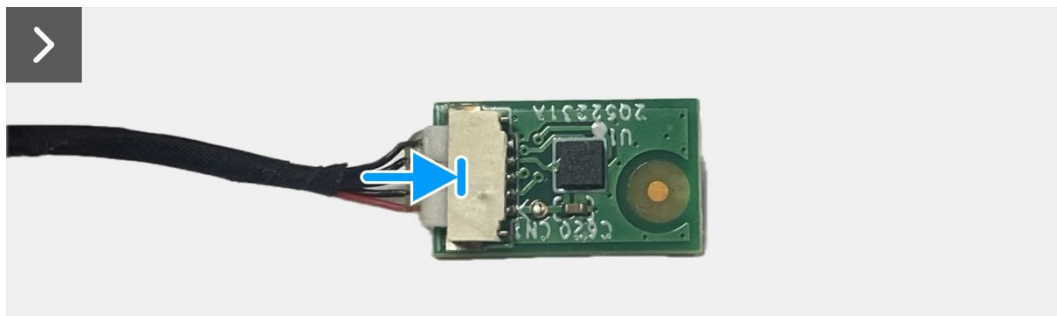


Figure 13. Installing the auto-rotation sensor board

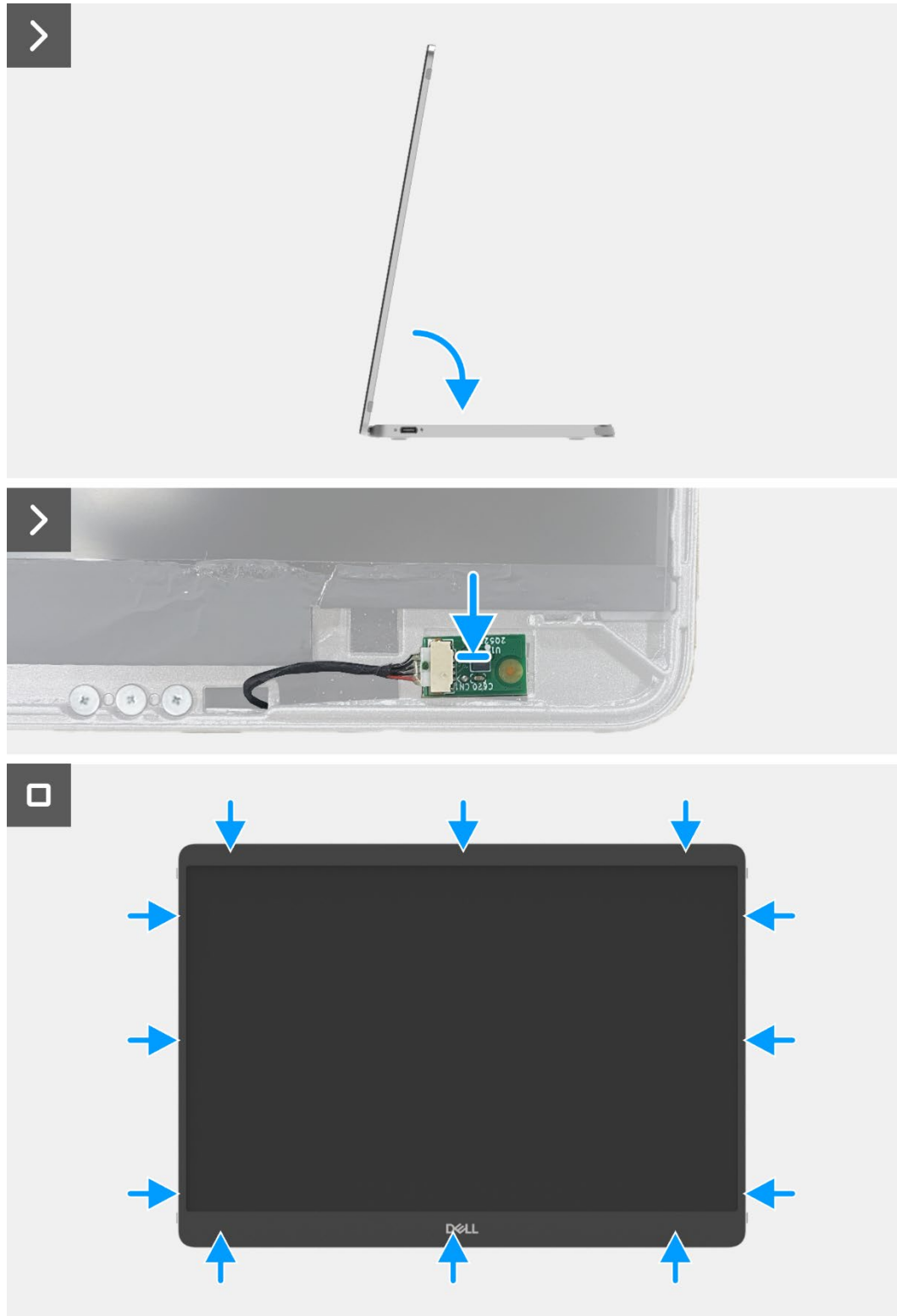


Figure 14. Installing the auto-rotation sensor board

Next steps

1. Install the [main board](#).
2. Install the [bottom base cover](#).
3. Install the [sleeve](#).
4. Follow the procedure in [After working inside your monitor](#).

Hinge

Removing the hinge

Prerequisites

1. Follow the procedure in [Before working inside your monitor](#).
2. Remove the [sleeve](#).
3. Remove the [bottom base cover](#).
4. Remove the [main board](#).
5. Remove the [auto-rotation sensor board](#).

Steps

1. Remove the six screws (M2x3) that secure the hinge to the top base cover.
2. Remove the six screws (M2x3) that secure the hinge to the back cover.
3. Flip the monitor over, pull the hinge out from the monitor.

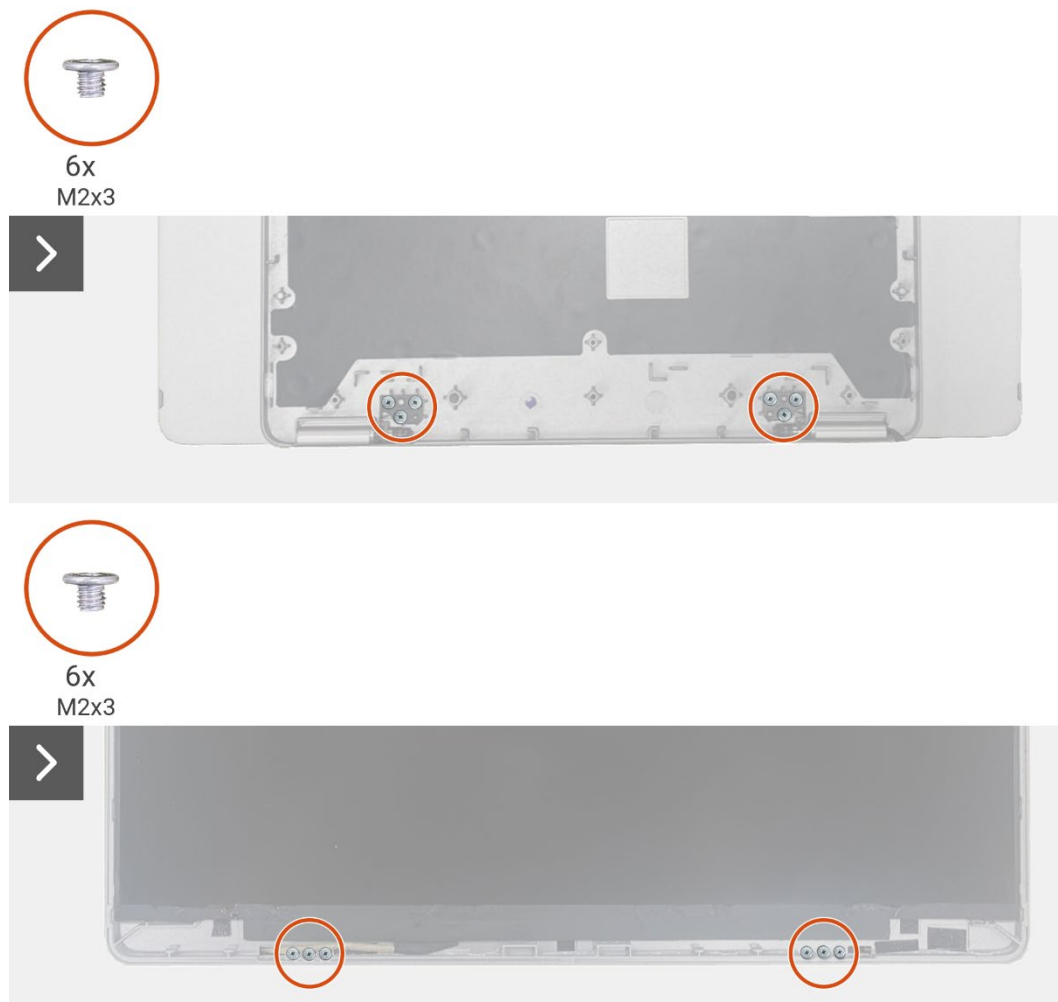


Figure 15. Removing the hinge

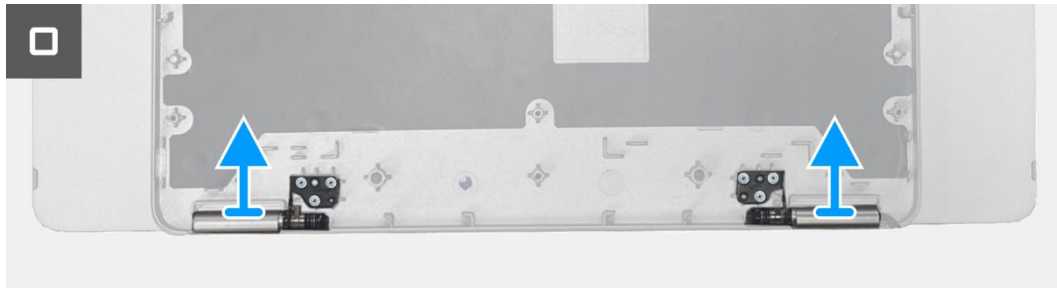


Figure 16. Removing the hinge

Installing the hinge

Steps

1. Place the hinges on the top base cover.
2. Replace the six screws (M2x3) to secure the hinges to the top base cover.
3. Flip the monitor over, replace the six screws (M2x3) to secure the hinges to the back cover.

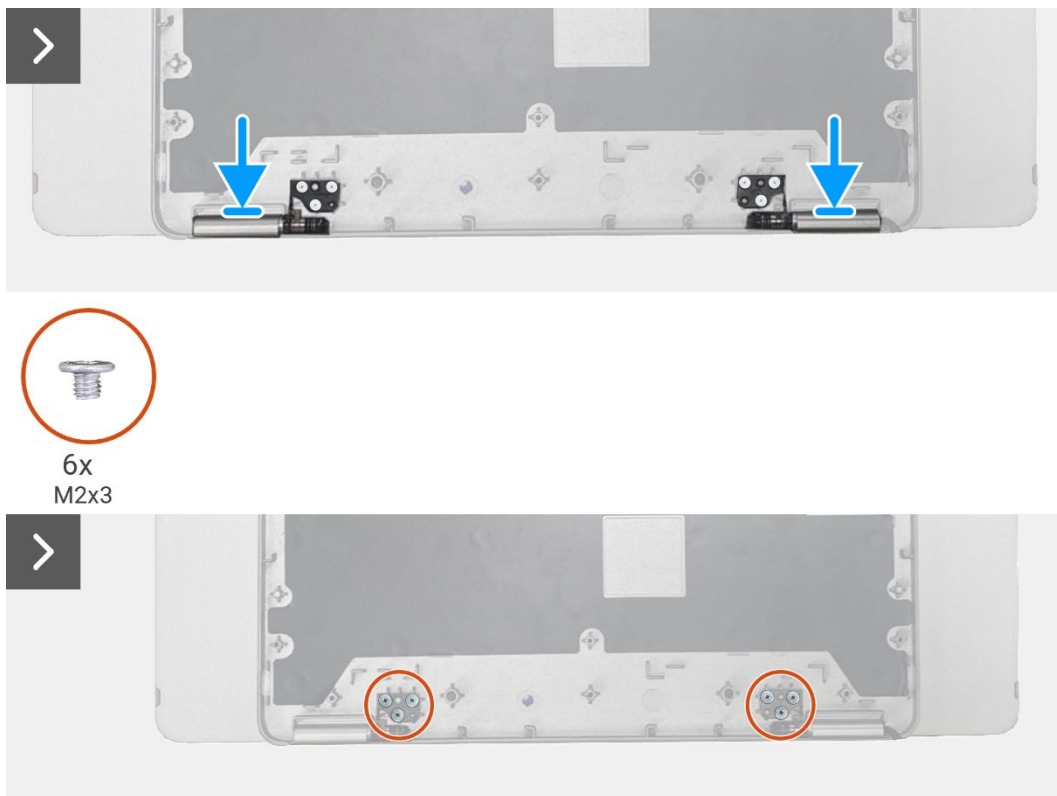


Figure 17. Installing the hinge



Figure 18. Installing the hinge

Next steps

1. Install the [auto-rotation sensor board](#).
2. Install the [main board](#).
3. Install the [bottom base cover](#).
4. Install the [sleeve](#).
5. Follow the procedure in [After working inside your monitor](#).

Power button

Removing the power button

Prerequisites

1. Follow the procedure in [Before working inside your monitor](#).
2. Remove the [sleeve](#).
3. Remove the [bottom base cover](#).
4. Remove the [main board](#).
5. Remove the [auto-rotation sensor board](#).
6. Remove the [hinge](#).

Steps

1. Remove the two screws (M1.6x2.5) that secure the power button to the top base cover.
2. Lift the power button up from the top base cover.

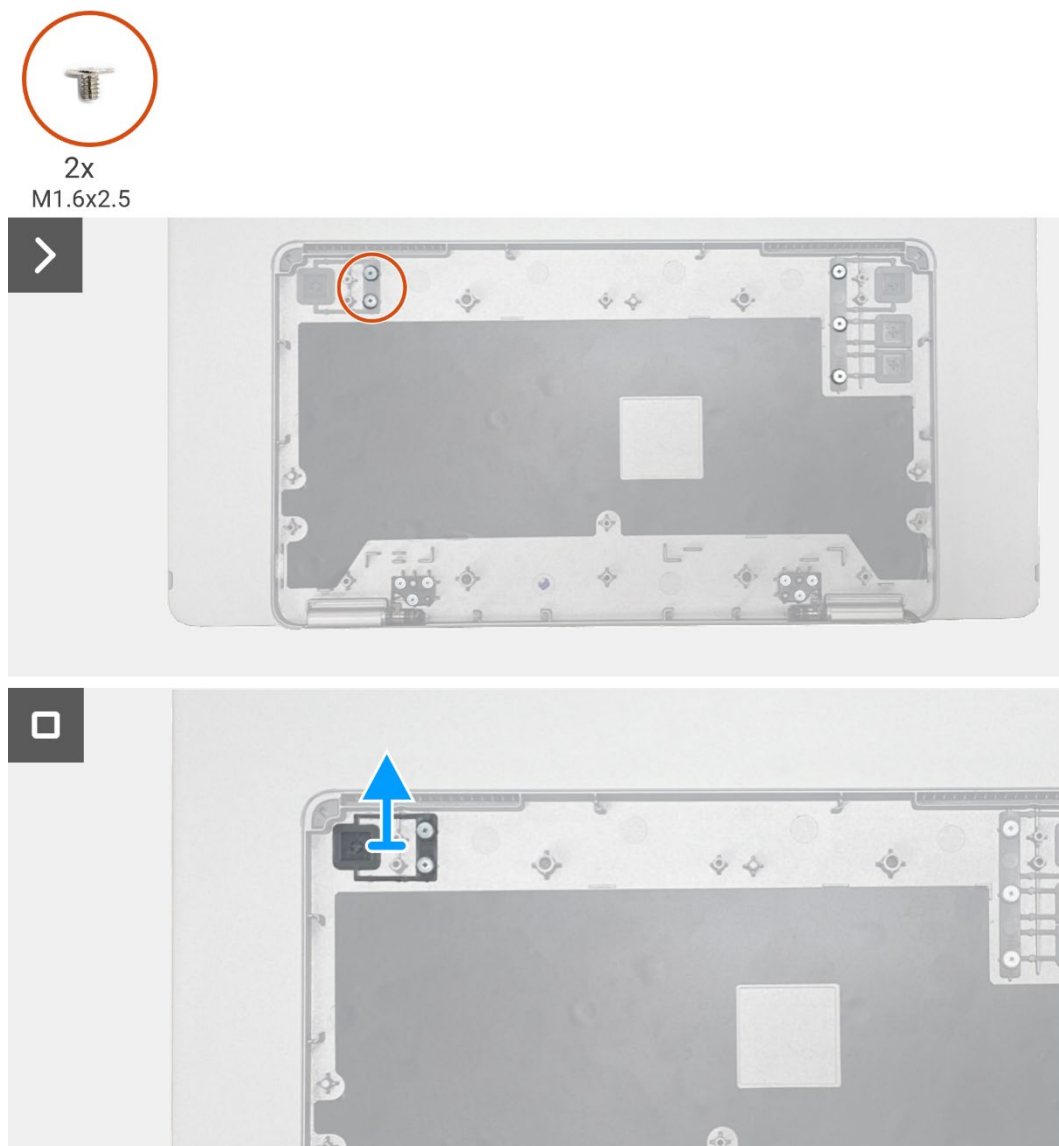


Figure 19. Removing the power button

Installing the power button

Steps

1. Replace the power button on the top base cover.
2. Replace the two screws (M1.6x2.5) to secure the power button to the top base cover.

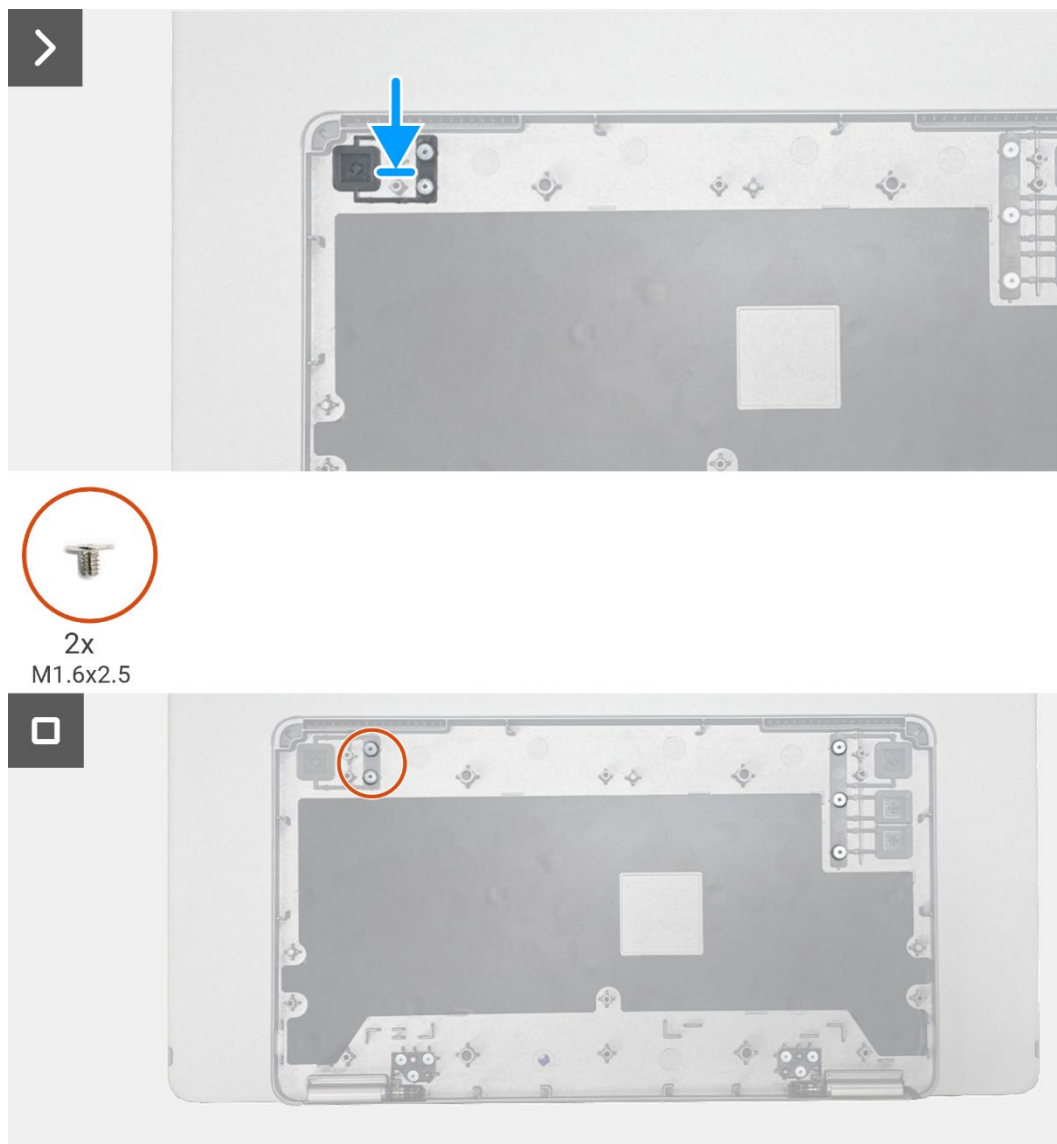


Figure 20. Installing the power button

Next steps

1. Install the [hinge](#).
2. Install the [auto-rotation sensor board](#).
3. Install the [main board](#).
4. Install the [bottom base cover](#).
5. Install the [sleeve](#).
6. Follow the procedure in [After working inside your monitor](#).

Function button

Removing the function button

Prerequisites

1. Follow the procedure in [Before working inside your monitor](#).
2. Remove the [sleeve](#).
3. Remove the [bottom base cover](#).
4. Remove the [main board](#).
5. Remove the [auto-rotation sensor board](#).
6. Remove the [hinge](#).
7. Remove the [power button](#).

Steps

1. Remove the three screws (M1.6x2.5) that secure the function button to the top base cover.
2. Lift the function button up from the top base cover.

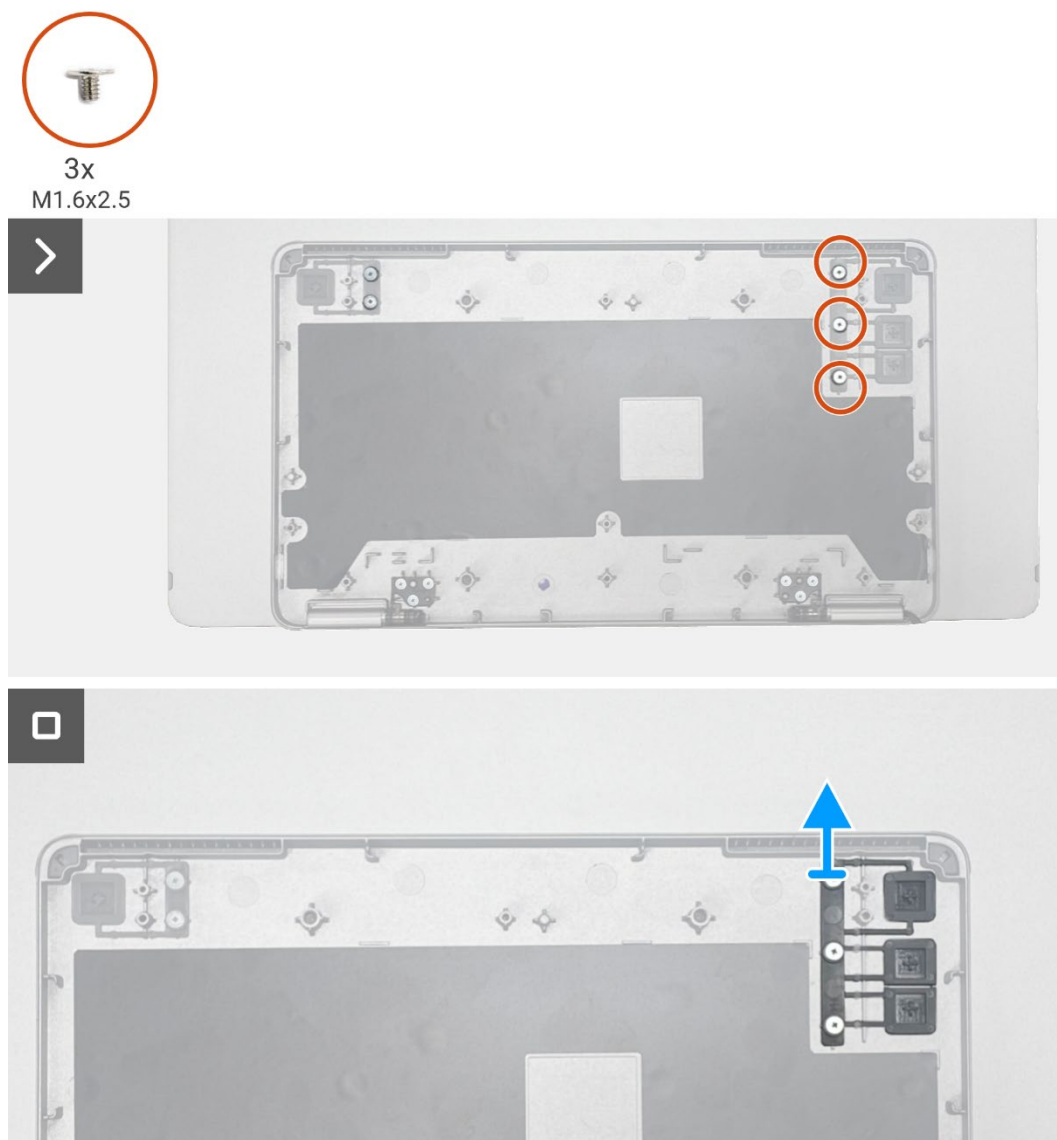


Figure 21. Removing the function button

Installing the function button

Steps

1. Replace the function button on the top base cover.
2. Replace the three screws (M1.6x2.5) to secure the function button to the top base cover.



Figure 22. Installing the function button

Next steps

1. Installing the [power button](#).
2. Install the [hinge](#).
3. Install the [auto-rotation sensor board](#).
4. Install the [main board](#).
5. Install the [bottom base cover](#).
6. Install the [sleeve](#).
7. Follow the procedure in [After working inside your monitor](#).

Contacting Dell

To contact Dell for sales, technical support, or customer service issues, see www.dell.com/contactdell.

- ① **NOTE:** Availability varies by country and product, and some services may not be available in your country.
- ① **NOTE:** If you do not have an active internet connection, you can find contact information about your purchase invoice, packing slip, bill, or Dell product catalog.