



The product images are for illustration purposes only. Actual product appearance, ports, keyboard layout, and accessories may vary by model.

- Intel Core 7 250U, 10C (2P + 8E) / 12T, P-core 1.8 / 5.4GHz, E-core 1.2 / 4.0GHz, 12MB Intel Smart Cache
- 16GB Soldered LPDDR5X-5200
- 512GB SSD M.2 2242 PCIe 4.0x4 NVMe
- Integrated Intel Graphics
- ChromeOS High Royalty
- Case color - Luna Grey
- 1-year, Mail-in

**Premium Care - Advanced Support from Real People. Real Fast.**



**REAL PERSON**

Choose how you want to reach us - through the phone, chat or email - our expert technicians will take care of you.



**REAL FAST**

Highly trained technicians will provide you real-time solutions, whatever the issue, on your first contact. If needed, our team will schedule an onsite visit for the next business day.



**HASSLE FREE**

'Getting started' and 'how-to' assistance for hardware and software. Easy solutions that are simple to reach - that's how Premium Care delivers you the ideal support experience.



**PC HEALTH CHECK**

Free annual PC Health Check that allows our experts to spot issues before you do so they can resolve them quickly and help you avoid PC problems.

**Accidental Damage Protection - Protection of your PC from the unexpected.**

Experience shows that a significant portion of devices may be damaged (and not covered under warranty) in the first three years. Lenovo's Accidental Damage Protection service covers accidents beyond the system warranty such as drops, spills, bumps and even electrical surges. Make sure your new device has maximum protection, avoid unplanned costs and get peace of mind.

**Base Warranty - Included with the systems you purchase, default 1- or 3-year coverage window.**

**Warranty Extensions & Upgrades - Service and protection that's right for your circumstances.**

- Pick Up & Return Courier
- Onsite Support
- Technician Installed Customer
- Replaceable Unit Service
- International Warranty Upgrade

**Recommended Accessories** **United Kingdom**



**ThinkPad Bluetooth Presenter Mouse (Aura Edition)**

4Y51T62792



**Lenovo Analog In-Ear Headphones Gen II Bulk Package (20pcs)**

4XD1T54899



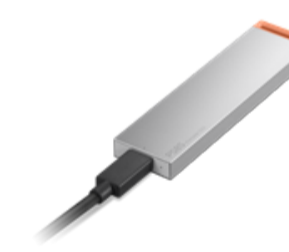
**Lenovo Legion 17" Gaming Backpack GB800 (Light Gray)**

GX41U39300



**Lenovo Dual USB-C 65W GaN Charger**

GOA6065WUK



**Lenovo PS8S Portable SSD 4TB**

4XB1T91892



**Lenovo USI Pen 2 Magnetic**

GX81Q72385

>> [View More Accessories](#)

**PERFORMANCE****Processor**

Intel Core™ 7 250U, 10C (2P + 8E) / 12T, P-core 1.8 / 5.4GHz, E-core 1.2 / 4.0GHz, 12MB Intel® Smart Cache

**Graphics**

Integrated Intel® Graphics

**Chipset**

Intel® SoC Platform

**Memory**

16GB Soldered LPDDR5X-5200

**Memory Slots**

Memory soldered to systemboard, no slots, dual-channel

**Max Memory**

16GB soldered memory, not upgradable

**Storage**

512GB SSD M.2 2242 PCIe® 4.0x4 NVMe®

**Storage Slot**

One M.2 2242 PCIe® 4.0 x4 slot (M.2 SSD models)

**Max Storage Support<sup>[1]</sup>**

One drive, up to 512GB M.2 2242 SSD

**Card Reader**

MicroSD Card Reader

**Audio Chip**

High Definition (HD) Audio, Realtek® ALC3287-CGT codec

**Speakers**

Stereo speakers, 2W x2, optimized with Waves MaxxAudio®

**Microphone**

2x, Array

**Camera**

5.0MP with Privacy Shutter

**Battery**

50Wh

**Power Adapter**

65W USB-C® (2-pin)

**DESIGN****Display**

14" WUXGA (1920x1200) IPS 300nits Glossy, 45% NTSC, 60Hz, Touch<sup>[2]</sup>

**Touchscreen**

OGM, 10-point Multi-touch

**Screen-to-Body Ratio**

89% AAR (active area ratio)

**Pen**

Pen Upgradable (Purchase Separately)

**Keyboard**

Backlit, English

**Touchpad**

Buttonless glass-like Mylar® surface multi-touch touchpad, 75 x 120 mm (2.95 x 4.72 inches)

**Dimensions (WxDxH)<sup>[3]</sup>**

312.9 x 227.1 x 17.7 mm (12.32 x 8.94 x 0.70 inches)

**Weight<sup>[4]</sup>**

Starting at 1.49 kg (3.28 lbs)

**Case Color**

Luna Grey

**Case Material**

Aluminium (Top), PC-ABS (Bottom)

**Surface Treatment**

Anodized Stamping (Top), Texture (Bottom)

**SOFTWARE****Operating System**

ChromeOS High Royalty

**Bundled Software**

None

**CONNECTIVITY****WLAN + Bluetooth**

Wi-Fi® 6E, 802.11ax 2x2 + BT5.3

**WWAN**

WWAN Not Supported

**Ethernet**

No Onboard Ethernet

**Standard Ports**

- 2x USB-A (USB 5Gbps / USB 3.2 Gen 1)
- 2x USB-C® (USB 10Gbps / USB 3.2 Gen 2), with USB PD 45-65W and DisplayPort™ 1.4
- 1x HDMI® 1.4b
- 1x Headphone / microphone combo jack (3.5mm)
- 1x microSD card reader

**Docking**

Various docking solutions supported via USB-C®. For more compatible docking solutions, please visit [Docking for Lenovo® Chrome 2in1 14IRU10](#)

**SECURITY & PRIVACY****Security Chip**

Google Security Chip H1

**Physical Locks**

Kensington Nano Security Slot™, 2.5 x 6 mm

**Fingerprint Reader**

Touch Style, Match-on-Chip, on Palm Rest

**Other Security**

Camera privacy shutter

**SERVICE****Base Warranty**

1-year, Mail-in

**Included Upgrade**

None

**ACCESSORIES****Bundled Accessories**

None

**CERTIFICATIONS****Green Certifications**

- ENERGY STAR® 9.0
- EPEAT™ Gold Registered<sup>[5]</sup>
- ErP Lot 6/26
- RoHS compliant
- TCO Certified, generation 10

**Mil-Spec Test**

MIL-STD-810H military test passed

**Other Certifications**

TÜV Rheinland® Low Blue Light (Software Solution)

**MODEL**

**TopSeller** : Yes **EAN / UPC / JAN:** 198156626189

**Announce Date:** 2025-02-28 **End of Support** : N/A

**Note:**

[1] The storage capacity supported is based on the test results with current Lenovo storage offerings.

[2] IPS (in-plane switching) technology may refer to IPS, PLS, ADS, AHVA, AAS.

[3] The system dimensions may vary depending on configurations.

[4] The system weight is approximate and based on results in Lenovo lab, which varies depending on the source of component, variance of the distribution of each component, and manufacturing process. It may not be the exact weight for each specific model.

[5] EPEAT is registered where applicable, please visit [epeat.net](https://www.epeat.net) for registration status by country.

• Please refer to the official [Lenovo store website](#) or contact a local Lenovo sales representative or authorized business partner for current inventory and purchase options.

• Lenovo reserves the right to change specifications without notice.  
 • California Electronic Waste Recycling Fee In California, per state law, Lenovo charges an electronic waste recycling fee on this covered device at the time of sale of the product. For more information, go to: <https://www.calrecycle.ca.gov/Electronics/Consumer>