

# IdeaCentre AIO 3

## Setup Guide

## Access User Guide



The illustrations are for your reference.



See *User Guide* for USB transfer rate.

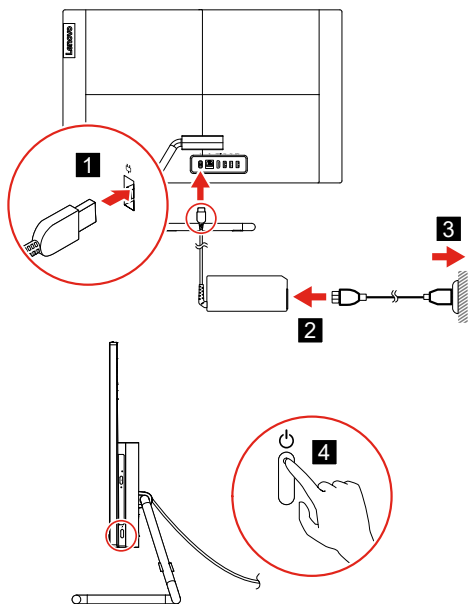
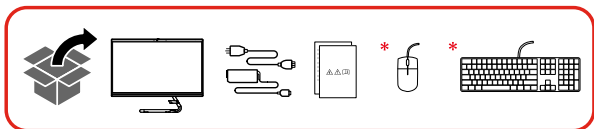


For selected models

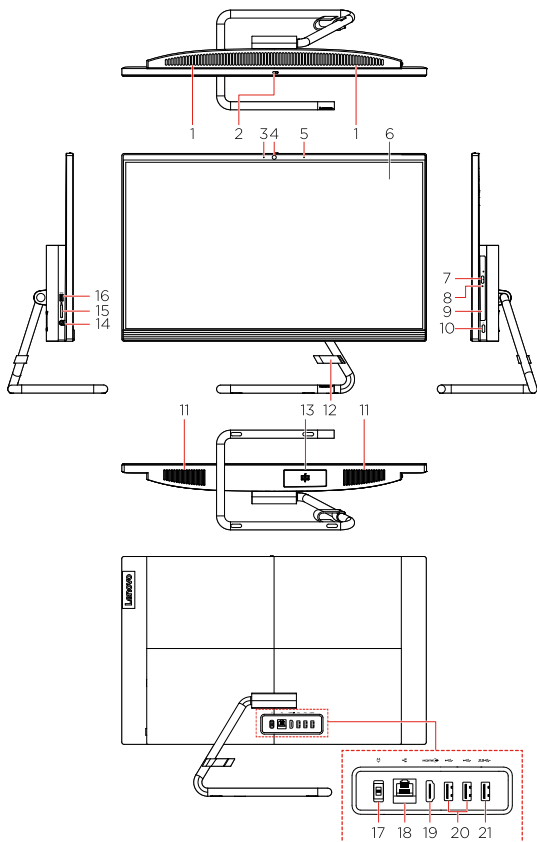


Customer replaceable units (CRUs). See *User Guide* for definition.

# Initial Setup



# Overview



1. Air vents
2. Camera cover slider
3. Camera light
4. Integrated camera
5. Integrated microphone
6. Screen
- \* 7. Optical drive eject/close button
- \* 8. Optical drive activity indicator
- \* 9. Optical drive
10. Power button
11. Internal speakers (2)
- \* 12. Cable clip
- \* 13. Storage drive door
14. Combo audio jack
15. 3 in 1 SD card slot
- \* 16. USB 3.1 connector Gen 1 / Gen 2
17. Power connector
18. Ethernet connector
19. HDMI™ 1.4 out connector
20. USB 2.0 connectors (2)
- \* 21. USB 3.1 connector Gen 1 / Gen 2

## Customer Replaceable Units (CRUs) \*\*

---

- Computer stand
- Internal speakers
- Keyboard
- Mouse
- Power adapter
- Power cord
- \* • Storage drive
- \* • Storage drive bracket

# Additional information

---

## European Union — compliance with the Radio Equipment Directive

Hereby, Lenovo (Singapore) Pte. Ltd., declares that the radio equipment type IdeaCentre AIO 3 22ADA05, IdeaCentre AIO 3 22IIL5, IdeaCentre AIO 3 22IMB05, IdeaCentre AIO 3 24ARE05, IdeaCentre AIO 3 24IIL5, IdeaCentre AIO 3 24IMB05, and IdeaCentre AIO 3 27IMB05 are in compliance with Directive 2014/53/EU.

The full text of the system EU declaration of conformity is available at the following Internet address:

<https://www.lenovo.com/us/en/compliance/eu-doc>

This radio equipment operates with the following frequency bands and maximum radio-frequency power:

Technology	Frequency band [MHz]	Maximum transmit power
WLAN 802.11b/g/n/ax	2400 - 2483.5	< 20 dBm
WLAN 802.11a/n/ac/ax	5150 - 5725	< 23 dBm
WLAN 802.11a/n/ac/ax	5725 - 5875	< 13.98 dBm
Bluetooth BR/EDR/LE	2400 - 2483.5	< 20 dBm

Usage of all the radio devices is limited to indoor in the band 5150 MHz to 5350 MHz (channels 36, 40, 44, 48, 52, 56, 60, 64).

---

First Edition (September 2020)

© Copyright Lenovo 2020

**LIMITED AND RESTRICTED RIGHTS NOTICE:** If data or software is delivered pursuant to a General Services Administration "GSA" contract, use, reproduction, or disclosure is subject to restrictions set forth in Contract No. GS-35F-05925.



Reduce | Reuse | Recycle