


# **Dell Pro 34 Plus USB-C Hub Monitor**

## **P3425WE**

### Teardown Instruction

## Notes, cautions, and warnings

 **NOTE:** A NOTE indicates important information that helps you make better use of your product.

 **CAUTION:** A CAUTION indicates either potential damage to hardware or loss of data and tells you how to avoid the problem.

 **WARNING:** A WARNING indicates a potential for property damage, personal injury, or death.

# Contents

<b>Chapter 1:Safety Instructions .....</b>	<b>4</b>
Before working inside your monitor .....	4
After working inside your monitor.....	4
<b>Chapter 2:Disassembly and reassembly.....</b>	<b>5</b>
Recommended tools.....	5
Screw list .....	5
Stand .....	6
Removing the stand.....	6
Installing the stand .....	7
Back Cover .....	8
Removing the back cover.....	8
Installing the back cover.....	10
Chassis assembly .....	12
Removing the chassis assembly .....	12
Installing the chassis assembly .....	14
LED driver board .....	16
Removing the LED driver board.....	16
Installing the LED driver board .....	18
Interface board .....	20
Removing the interface board.....	20
Installing the interface board.....	22
Power board .....	23
Removing the power board.....	23
Installing the power board .....	24
<b>Chapter 3:Contacting Dell .....</b>	<b>25</b>

# Safety Instructions

Use the following safety guidelines to protect your monitor from potential damage and to ensure your personal safety. Unless otherwise noted, each procedure included in this document assumes that you have read the safety information that shipped with your monitor.

**NOTE:** Before using the monitor, read the safety information that is shipped with your monitor and printed on the product. Keep the documentation at a secure location for future reference.

**WARNING:** Use of controls, adjustments, or procedures other than those specified in this documentation may result in exposure to shock, electrical hazards and/or mechanical hazards.

**CAUTION:** The possible long-term effect of listening to audio at high volume through the headphones (on monitor that supports it) may damage your hearing ability.

- Place the monitor on a solid surface and handle it carefully. The screen is fragile and can be damaged if dropped or hit with a sharp object.
- Ensure that your monitor is electrically rated to operate with the AC power available in your location.
- Keep the monitor in room temperature. Excessive cold or hot conditions can have an adverse effect on the liquid crystal of the display.
- Connect the power cable from the monitor to a wall outlet that is near and accessible. See Connecting the cables in User's Guide.
- Do not place and use the monitor on a wet surface or near water.
- Do not subject the monitor to severe vibration or high impact conditions. For example, do not place the monitor inside a car trunk.
- Unplug the monitor when it is going to be left unused for an extended period.
- To avoid electric shock, do not attempt to remove any cover or touch the inside of the monitor.
- Read these instructions carefully. Keep this document for future reference. Follow all warnings and instructions that are marked on the product.
- Certain monitors can be wall mounted using the VESA mount that is sold separately. Ensure to use the correct VESA specifications as mentioned in the wall mounting section of the User's Guide.

For information about safety instructions, see the Safety, Environmental and Regulatory Information (SERI) document that is shipped with your monitor.

## Before working inside your monitor

### Steps

1. Save and close all open files and exit all open applications.
2. Turn off your monitor.
3. Disconnect your monitor and all attached devices from their electrical outlets.
4. Disconnect all attached network devices and peripherals, such as keyboard, mouse, and dock from your monitor.

**CAUTION:** To disconnect a network cable, first unplug the cable from your monitor and then unplug the cable from the network device.

5. Remove any media card and optical disc from your monitor, if applicable.

## After working inside your monitor

**CAUTION:** Leaving any loose or misplaced screws inside your monitor may severely damage it.

### Steps

1. Replace all screws and ensure that no stray screws remain inside your monitor.
2. Connect any external devices, peripherals, or cables you removed before working on your monitor.
3. Replace any media cards, discs, or any other parts that you removed before working on your monitor.
4. Connect your monitor and all attached devices to their electrical outlets.
5. Turn on your monitor.

## Disassembly and reassembly

**NOTE:** The images in this document may differ from your computer depending on the configuration you ordered.

### Recommended tools

- Phillips screwdriver #0
- Phillips screwdriver #2
- Plastic scribe


### Screw list

**NOTE:** When removing screws from a component, it is recommended to note the screw type, the quantity of screws, and then place them in a screw storage box. This is to ensure that the correct number of screws and correct screw type is restored when the component is replaced.

**NOTE:** Some computers have magnetic surfaces. Ensure that the screws are not left attached to such surfaces when replacing a component.

**NOTE:** Screw color may vary with the configuration ordered.

**Table 1. Screw list**

Component	Screw type	Quantity	Screw image
Back Cover	M4x10	4	
Chassis	M3x3	3	
Interface board	M3x9	4	
Power board	M3x9	4	
LED driver board	M3x9	2	

# Stand

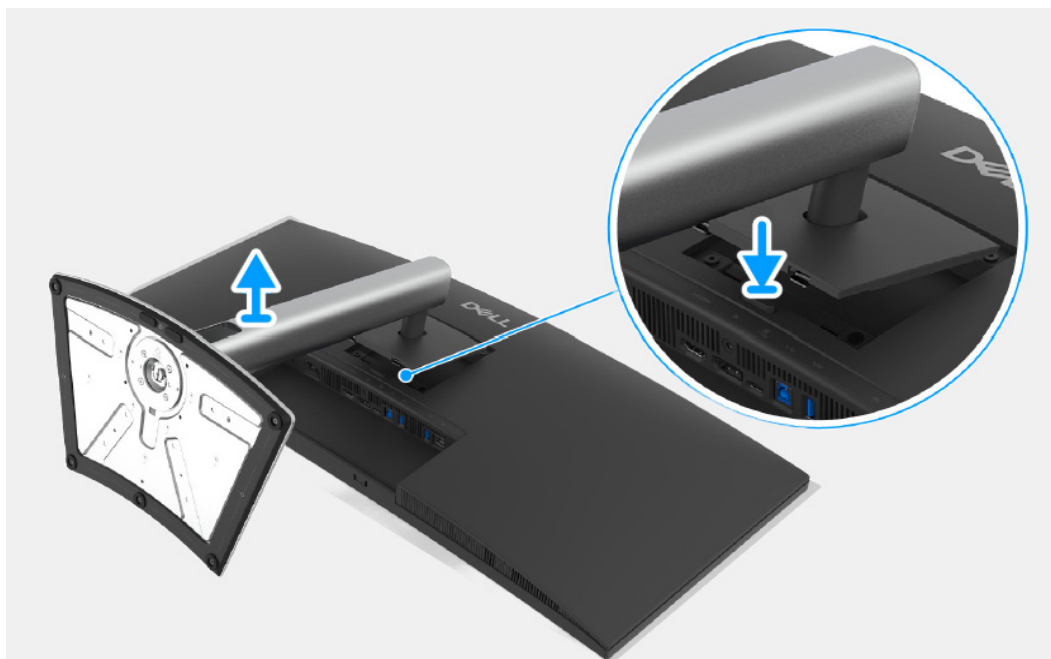
## Removing the stand

### Prerequisites

1. Follow the procedure in [Before working inside your monitor](#).
- ① **NOTE:** To prevent the LCD screen from scratches during stand removal, ensure the monitor is positioned on a soft surface and handled carefully.
- ① **NOTE:** The following steps are specifically for removing the stand that is shipped with your monitor. If you are removing a stand that you purchased from any other source, follow the setup instructions that are included with the stand.

### Steps

1. Place the monitor on a soft cloth or cushion.
2. Press and hold the stand release button at the back of the display.
3. Lift the stand assembly up and away from the monitor.

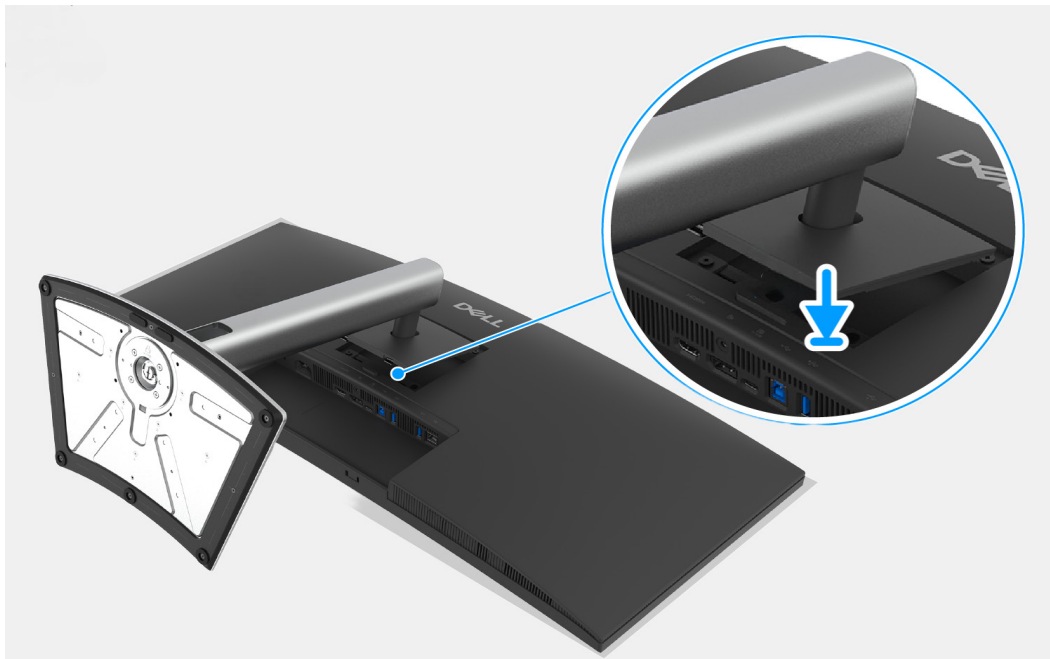


**Figure 1.** Removing the stand

## Installing the stand

### Steps

1. Align the two tabs on the upper part of the stand to the groove on the back of the display.
2. Press the stand down until it snaps into place.



**Figure 2.** Installing the stand

### Next steps

1. Follow the procedure in [After working inside your monitor.](#)

# Back Cover

## Removing the back cover

### Prerequisites

1. Follow the procedure in [Before working inside your monitor.](#)
2. Remove the [stand](#).

### Steps

1. Remove the four screws (M4x10) that secure the back cover to the chassis assembly.
2. Using the plastic scribe, pry the back cover starting from the edge of the monitor.
3. Lift the back cover.
4. Disconnect the control board cable from the connector on the interface board.

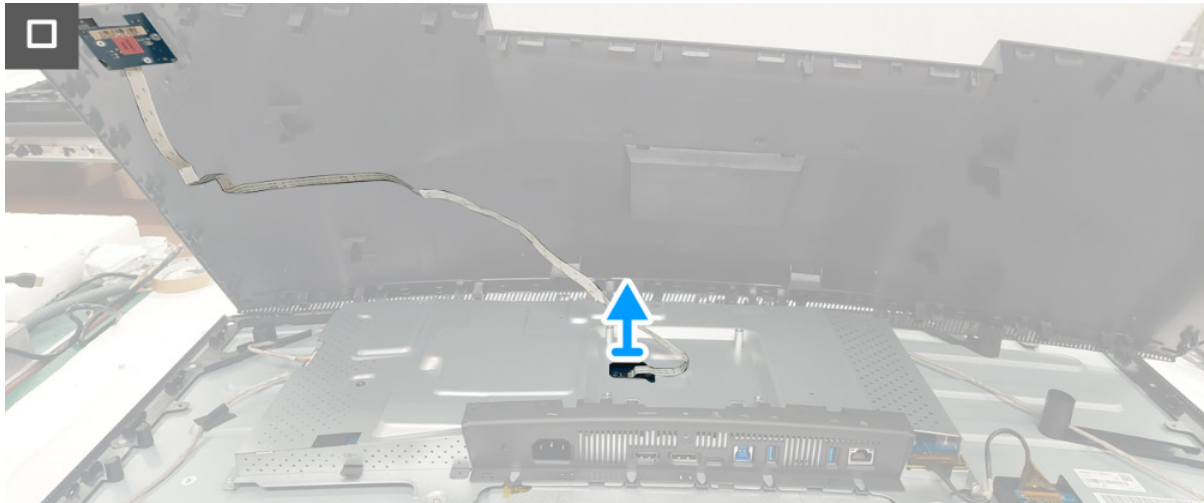


4x  
M4x10



**Figure 3.** Removing the back cover





**Figure 4.** Removing the back cover

## Installing the back cover

### Steps

1. Connect the control board cable to the connector on the interface board.
2. Place and snap the back cover into place on the chassis assembly.
- ① **NOTE:** Align the screw holes on the back cover with the screw holes on the chassis assembly before applying slight pressure to the back cover.
3. Replace the four screws (M4x10) to secure the back cover to the monitor.

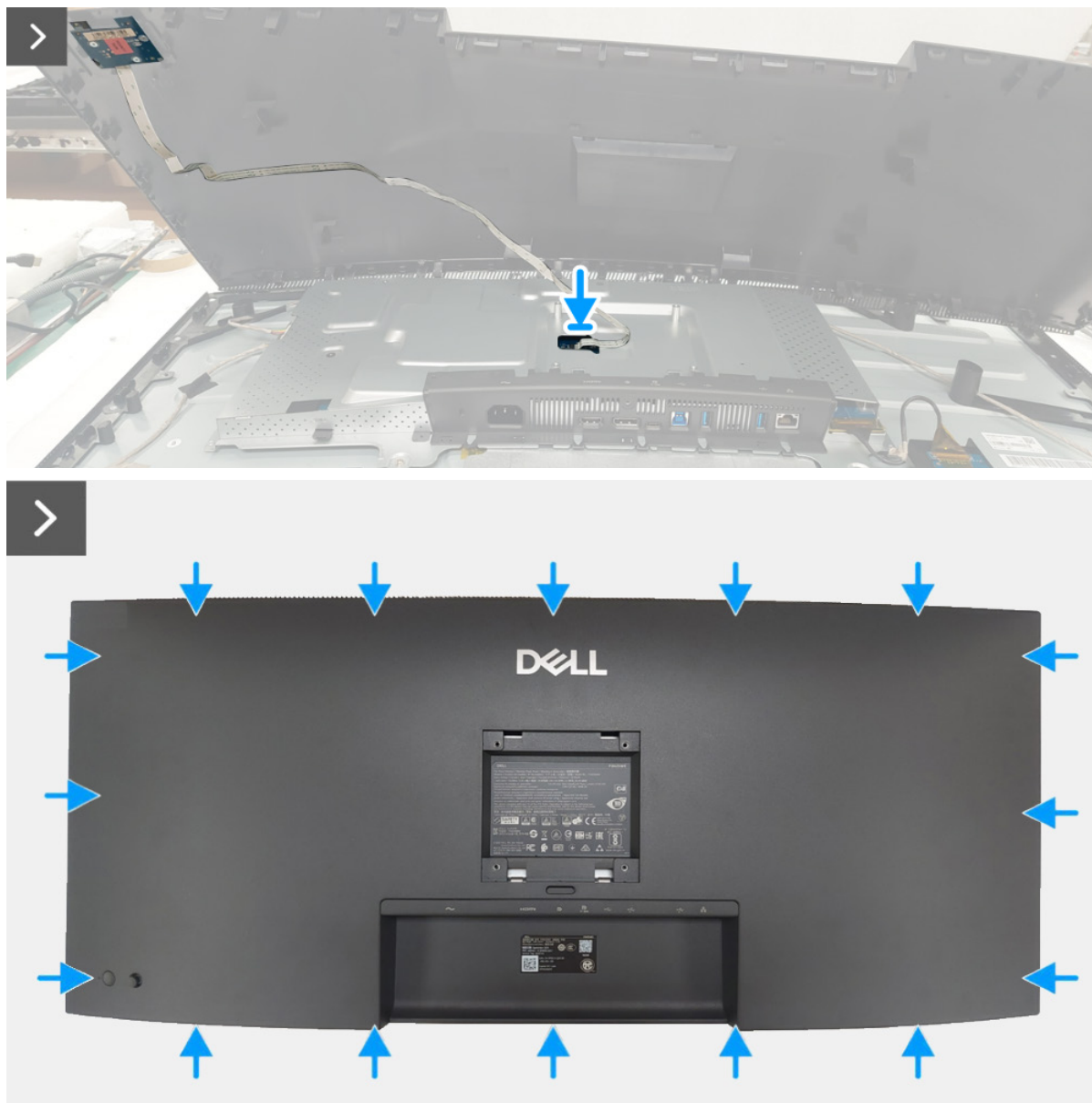


Figure 5. Installing the back cover



**Figure 6.** Installing the back cover

**Next steps**

1. Install the [stand](#).
2. Follow the procedure in [After working inside your monitor](#).

# Chassis assembly

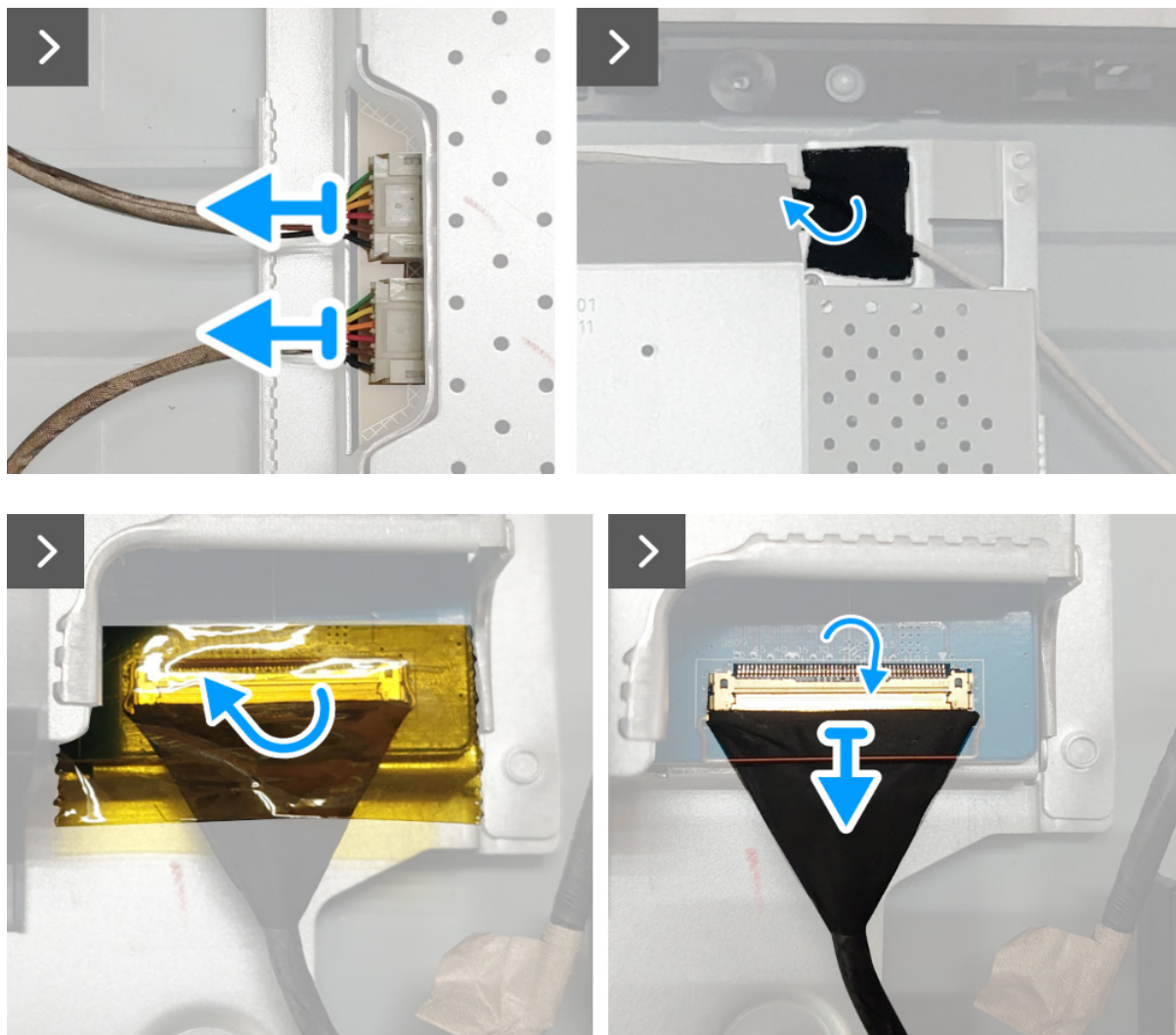
## Removing the chassis assembly

### Prerequisites

1. Follow the procedure in [Before working inside your monitor](#).
2. Remove the [stand](#).
3. Remove the [back cover](#).

### Steps

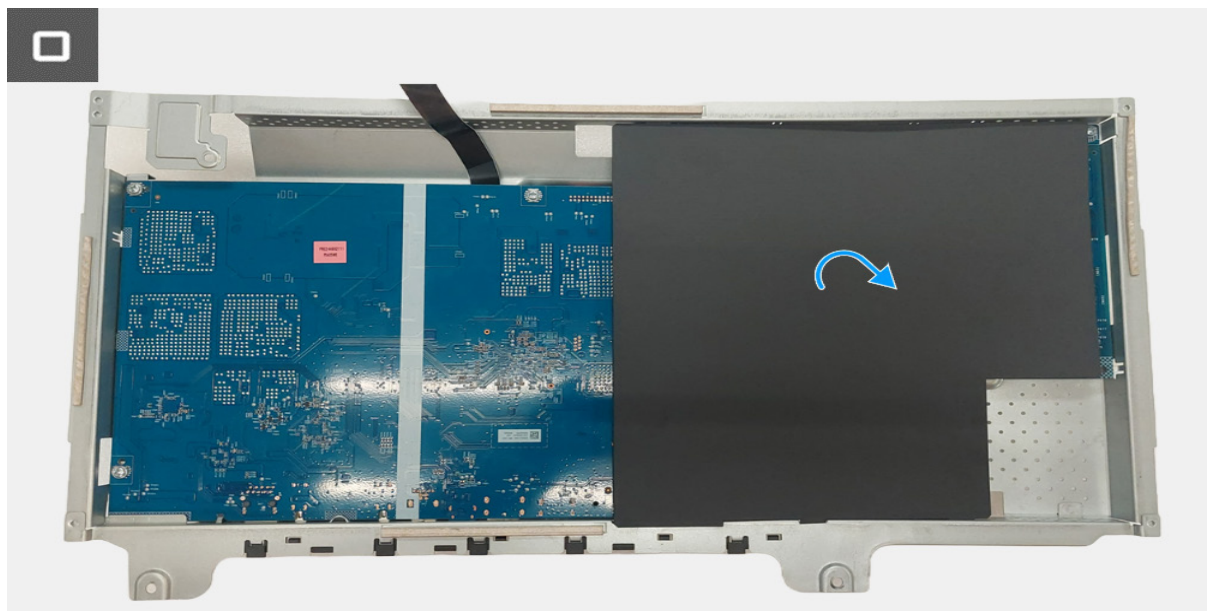
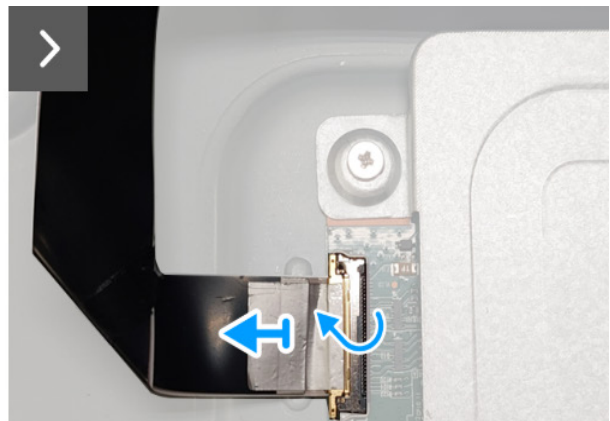
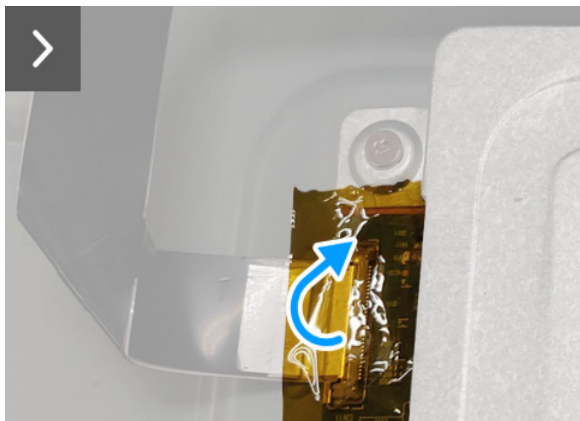
1. Disconnect the short backlight cable and long backlight cable from the connectors on the LED driver board.
2. Peel the tape on the long backlight cable.
3. Peel the yellow tape on the USB board cable from the interface board.
4. Lift the lock and disconnect the USB board cable from the connector on the interface board.
5. Remove three screws (M3x3) that secure the chassis assembly to the display panel.
6. Peel the yellow tape on the LVDS connector.
7. Lift the lock and disconnect the LVDS cable from the connector on the display panel.
8. Remove the chassis assembly from the display panel.



**Figure 7.** Removing the chassis assembly



3x  
M3x3



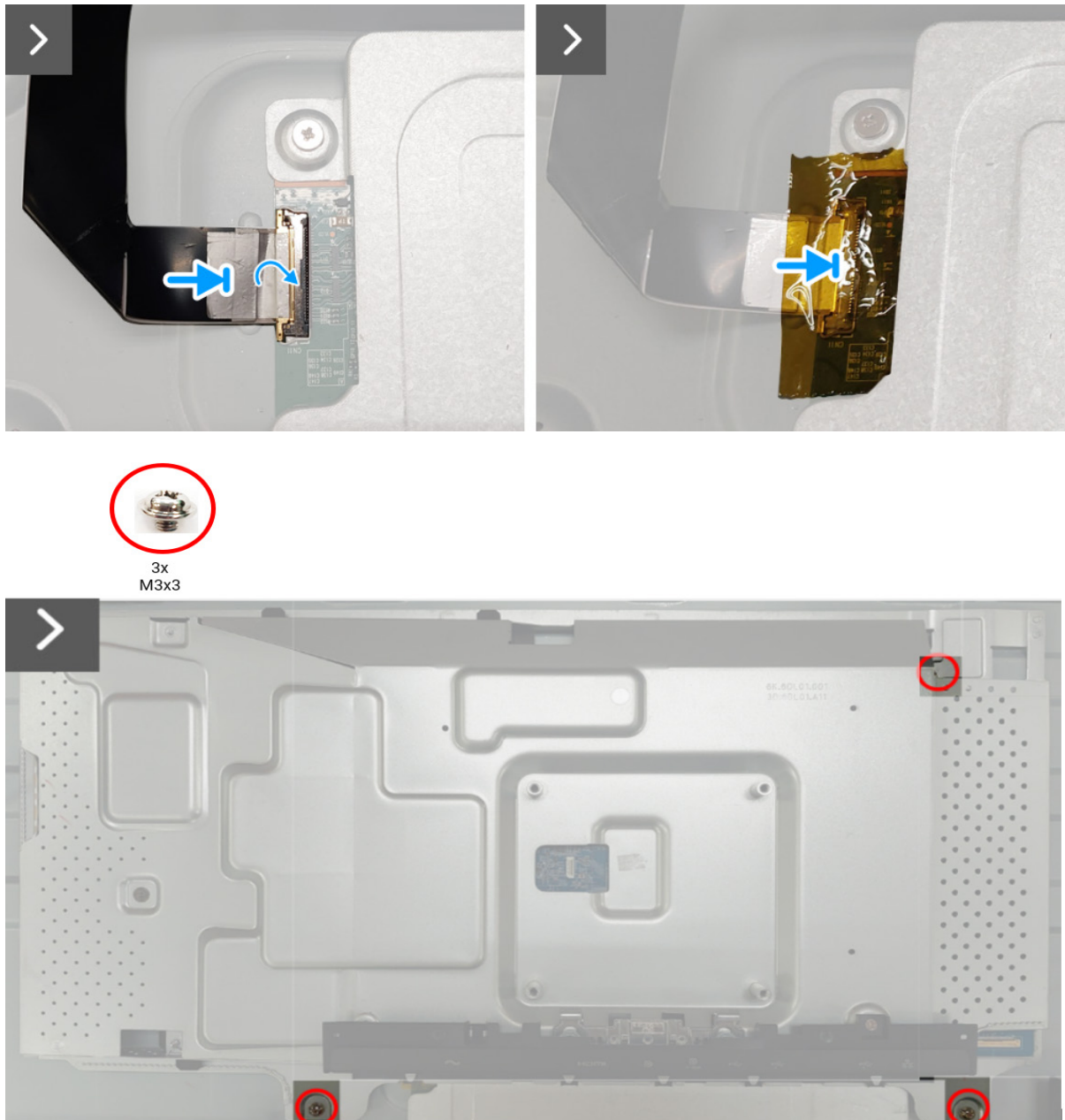
**Figure 8.** Removing the chassis assembly



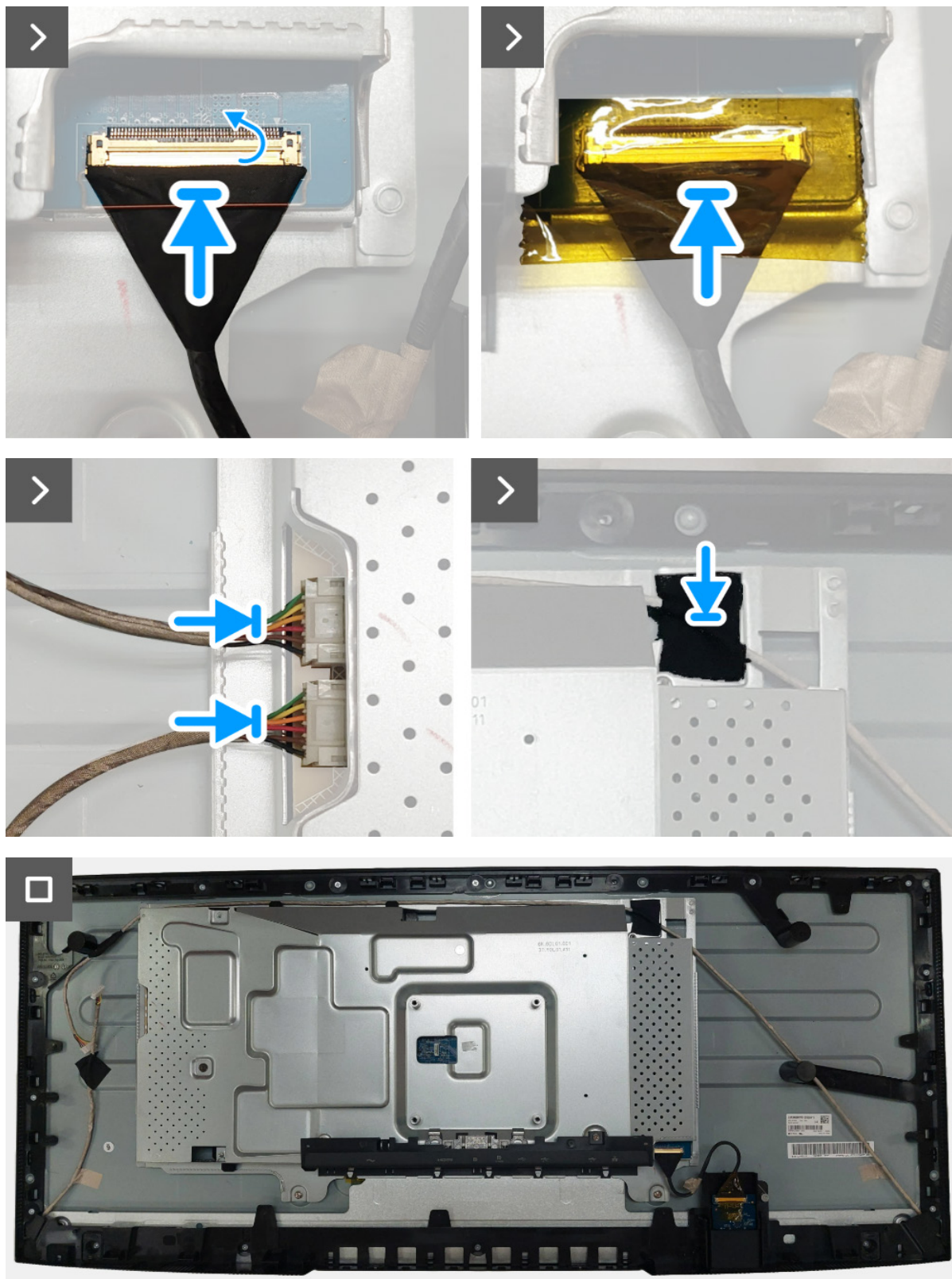
## Installing the chassis assembly

### Steps

1. Connect the LVDS cable to the connector on the display panel and make sure the LVDS cable is locked properly.
2. Adhere the yellow tape on the LVDS connector.
3. Place the chassis assembly on the display panel.
4. Replace three screws (M3x3) to secure the chassis assembly to the display panel.
5. Connect the USB board cable to the connector on the interface board and make sure the USB board cable is locked properly.
6. Adhere the yellow tape on the USB board cable to cover the connector on the interface board.
7. Connect the short backlight cable and long backlight cable to the connectors on the LED driver board.
8. Adhere the tape on the long backlight cable.



**Figure 9.** Installing the chassis assembly



**Figure 10.** Installing the chassis assembly

#### Next steps

1. Install the [back cover](#).
2. Install the [stand](#).
3. Follow the procedure in [After working inside your monitor](#).

# LED driver board

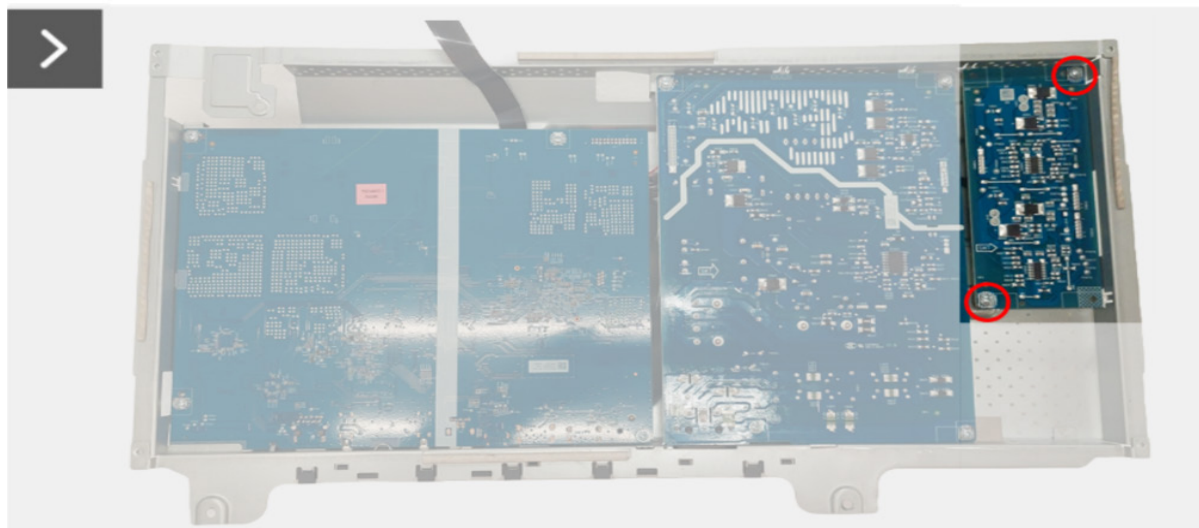
## Removing the LED driver board

### Prerequisites

1. Follow the procedure in [Before working inside your monitor](#).
2. Remove the [stand](#).
3. Remove the [back cover](#).
4. Remove the [chassis assembly](#).

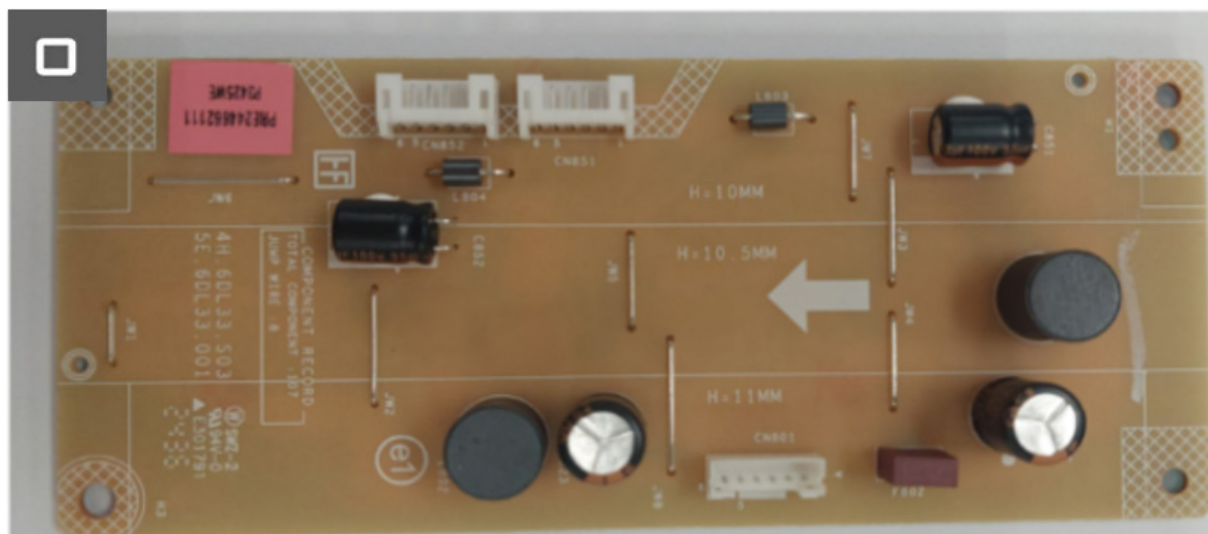
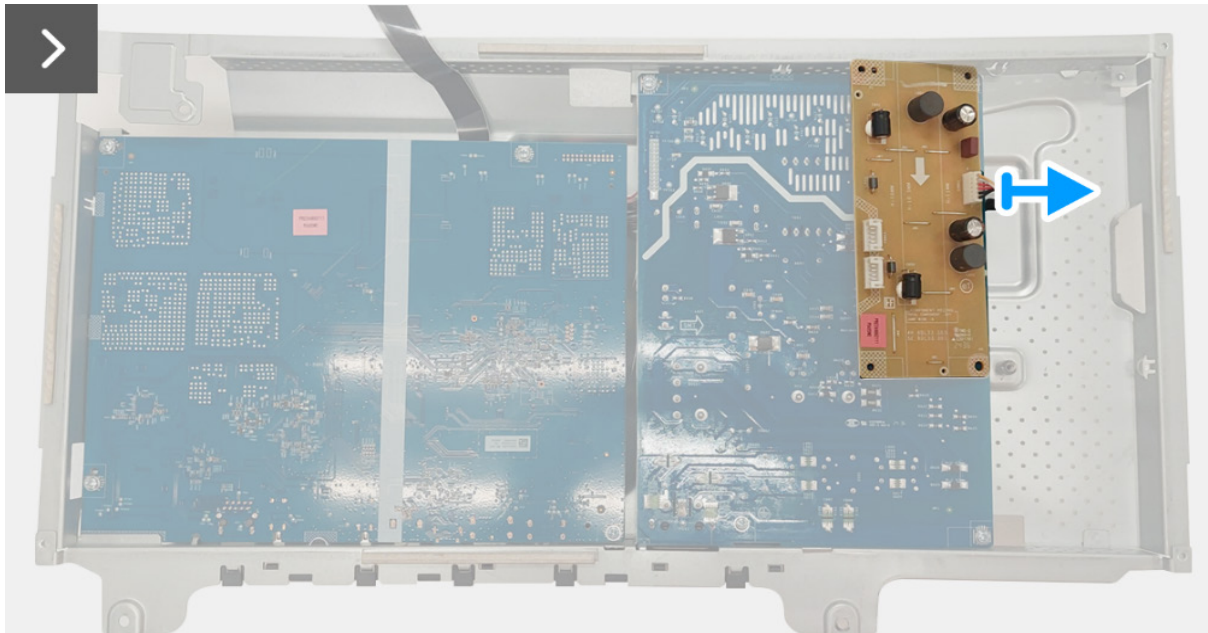
### Steps

1. Peel the mylar from the chassis assembly.
2. Remove the two screws (M3x9) that secure the LED driver board to the chassis assembly.
3. Remove the LED driver board from the chassis assembly.
4. Turn the LED driver board and disconnect the power cable from the connector on the LED driver board.



**Figure 11.** Removing the LED driver board



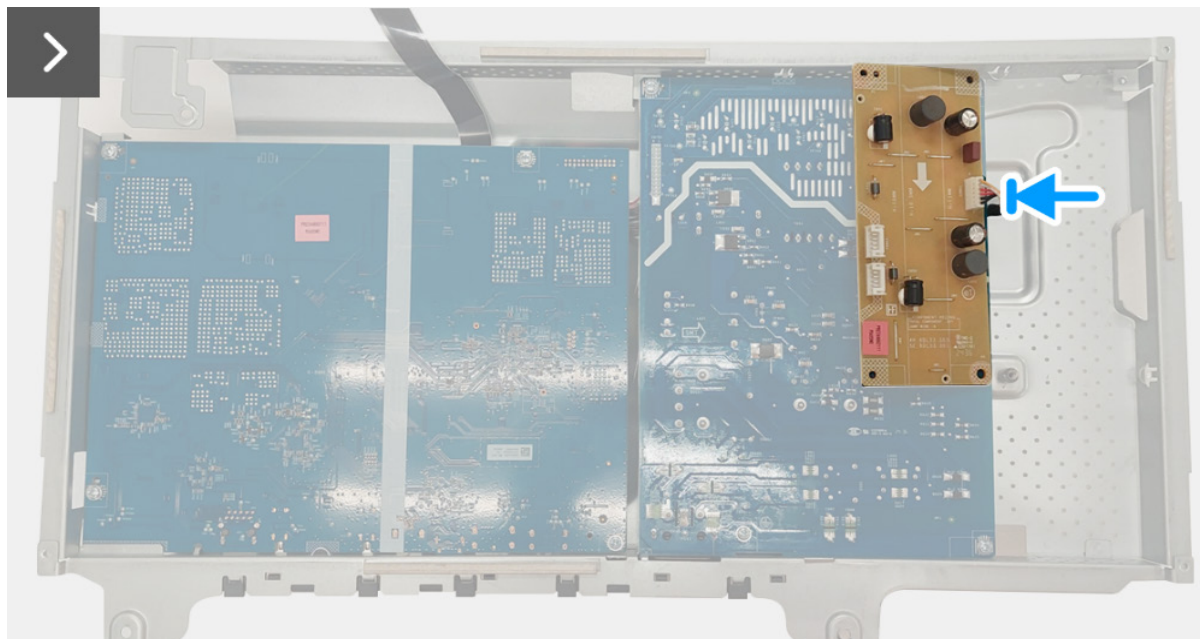


**Figure 12.** Removing the LED driver board

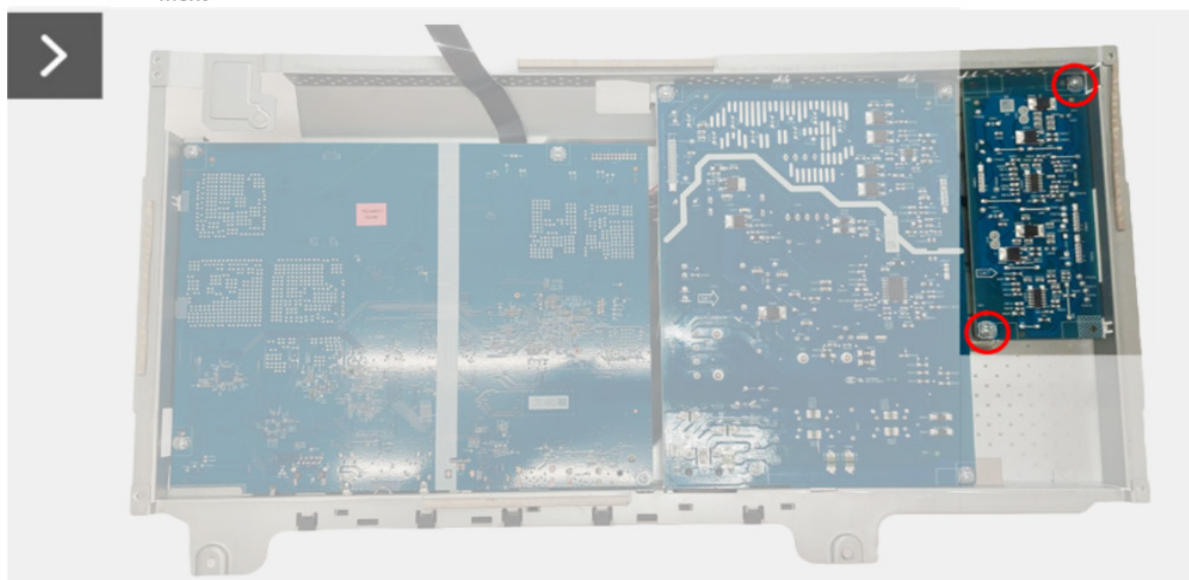
## Installing the LED driver board

### Steps

1. Connect the power cable to the connector on the LED driver board.
2. Align and place the LED driver board to the chassis assembly.
3. Replace the two screws (M3x9) to secure the LED driver board to the chassis assembly.
4. Assemble the mylar to the chassis assembly.



2x  
M3x9



**Figure 13.** Installing the LED driver board



**Figure 14.** Installing the LED driver board

**Next steps**

1. Install the [chassis assembly](#).
2. Install the [back cover](#).
3. Install the [stand](#).
4. Follow the procedure in [After working inside your monitor](#).

# Interface board

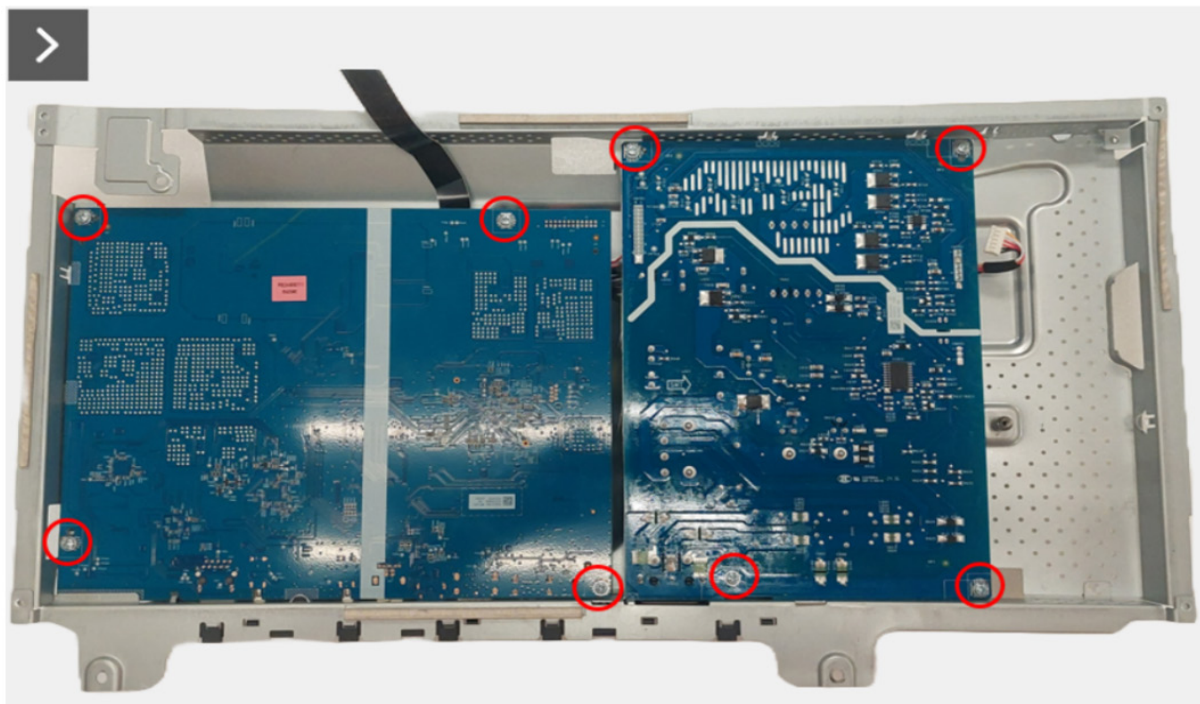
## Removing the interface board

### Prerequisites

1. Follow the procedure in [Before working inside your monitor](#).
2. Remove the [stand](#).
3. Remove the [back cover](#).
4. Remove the [chassis assembly](#).
5. Remove the [LED driver board](#).

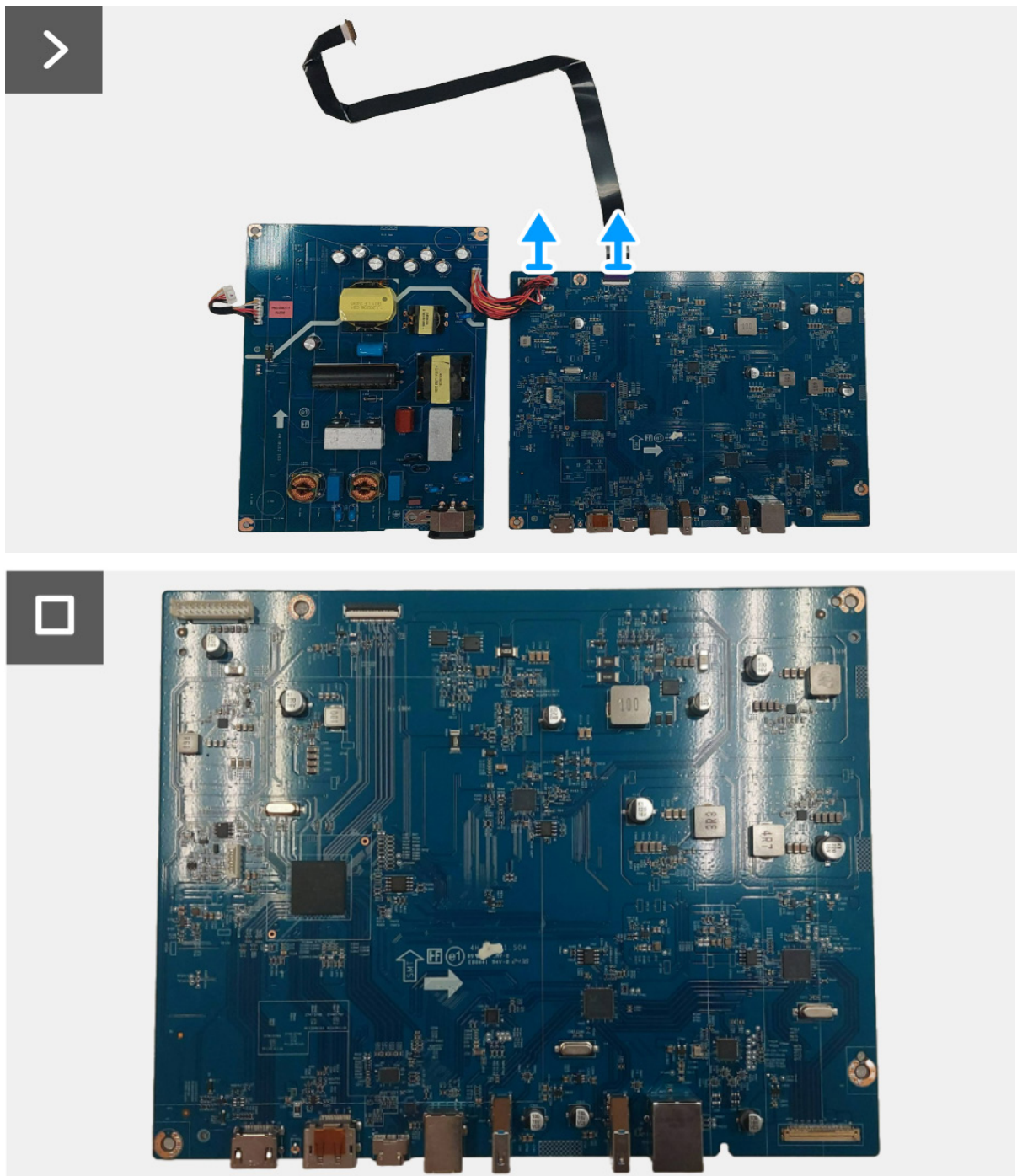
### Steps

1. Remove the eight screws (M3x9) from the interface board and power board.
2. Remove the interface board and power board from the chassis assembly.
3. Disconnect the power cable and LVDS cable from the connectors on the interface board.



**Figure 15.** Removing the interface board



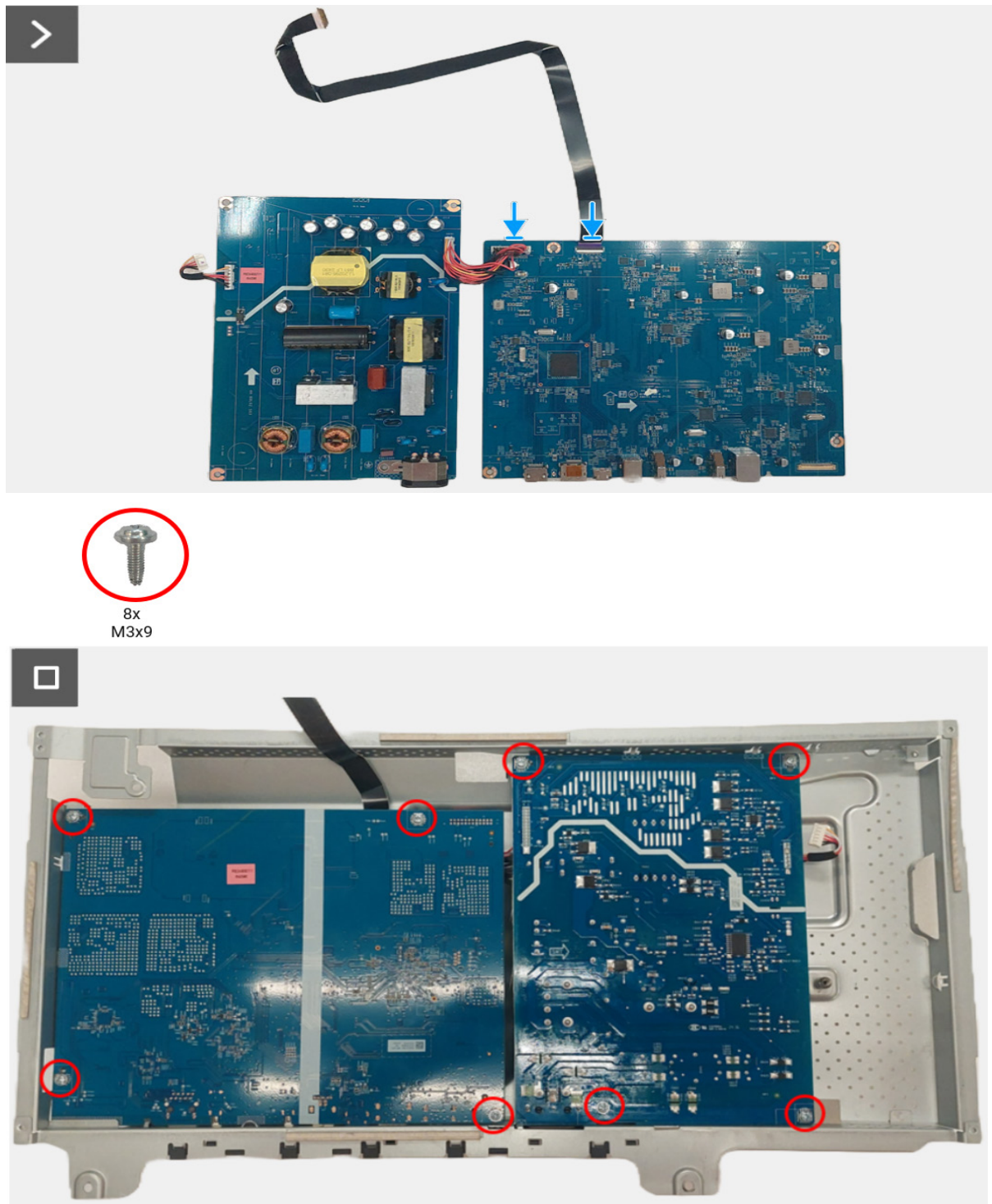


**Figure 16.** Removing the interface board

## Installing the interface board

### Steps

1. Connect the power cable and LVDS cable to the connectors on the interface board.
2. Align and place the the power board and interface board to the chassis assembly.
3. Replace the eight screws (M3x9) to secure the power board and interface board with the chassis assembly.



**Figure 17.** Installing the interface board

### Next steps

1. Install the [LED driver board](#).
2. Install the [chassis assembly](#).
3. Install the [back cover](#).
4. Install the [stand](#).
5. Follow the procedure in [After working inside your monitor](#).

# Power board

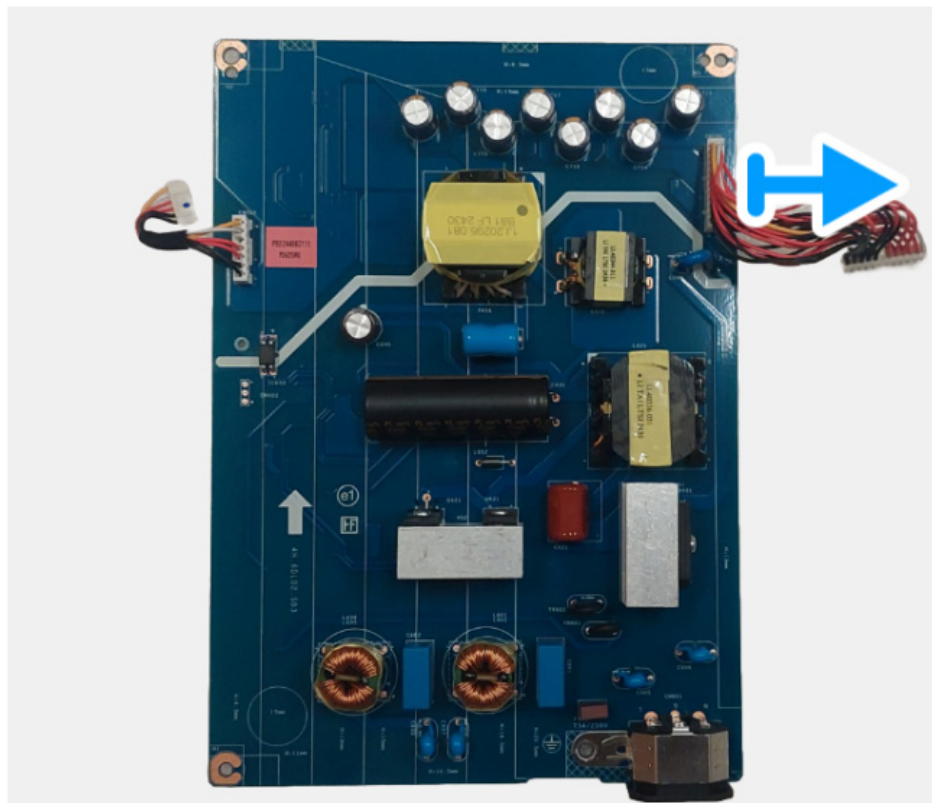
## Removing the power board

### Prerequisites

1. Follow the procedure in [Before working inside your monitor](#).
2. Remove the [stand](#).
3. Remove the [back cover](#).
4. Remove the [chassis assembly](#).
5. Remove the [LED driver board](#).
6. Remove the [interface board](#).

### Steps

1. Disconnect the power cable from the connector on the power board.

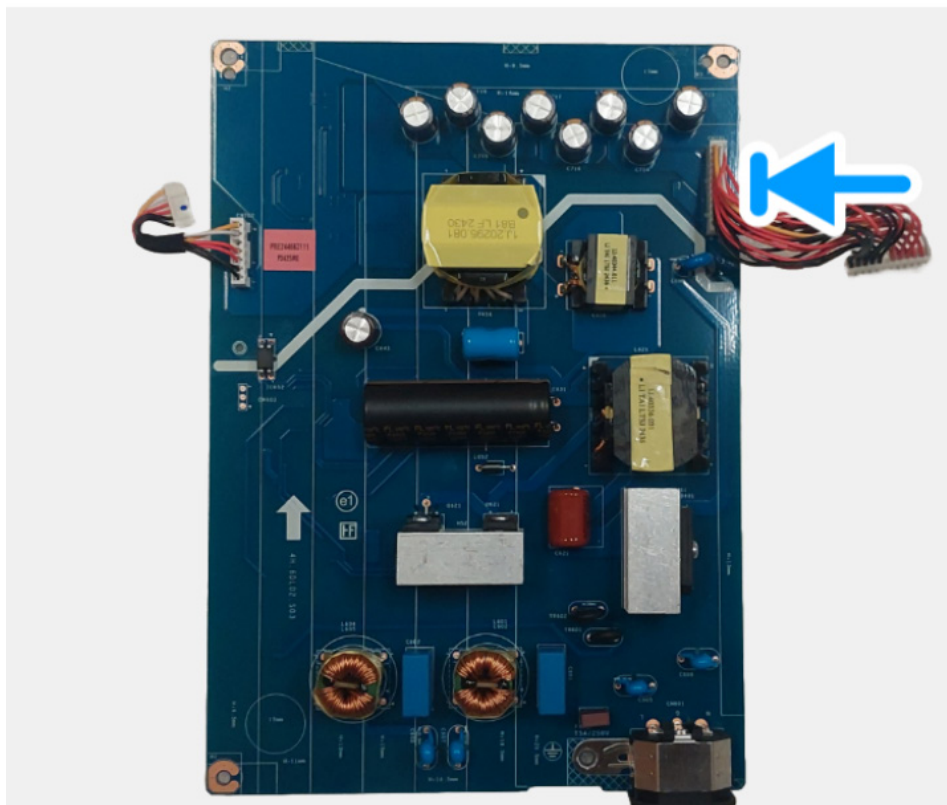


**Figure 18.** Removing the power board

## Installing the power board

### Steps

1. Connect the power cable to the connectors on the power board.



**Figure 19.** Installing the power board

### Next steps

1. Install the [interface board](#).
2. Install the [LED driver board](#).
3. Install the [chassis assembly](#).
4. Install the [back cover](#).
5. Install the [stand](#).
6. Follow the procedure in [After working inside your monitor](#).



## Contacting Dell

To contact Dell for sales, technical support, or customer service issues, see [www.dell.com/contactdell](http://www.dell.com/contactdell).

- ① **NOTE:** Availability varies by country and product, and some services may not be available in your country.
- ① **NOTE:** If you do not have an active internet connection, you can find contact information about your purchase invoice, packing slip, bill, or Dell product catalog.