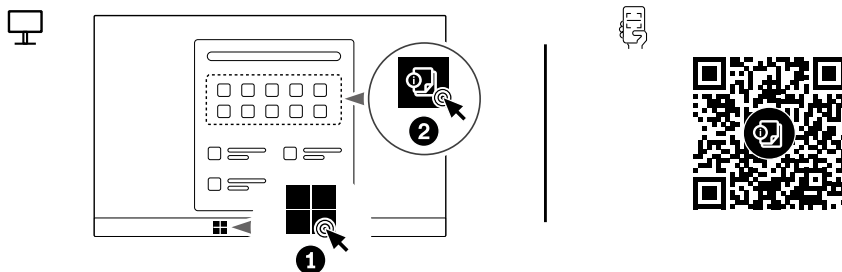


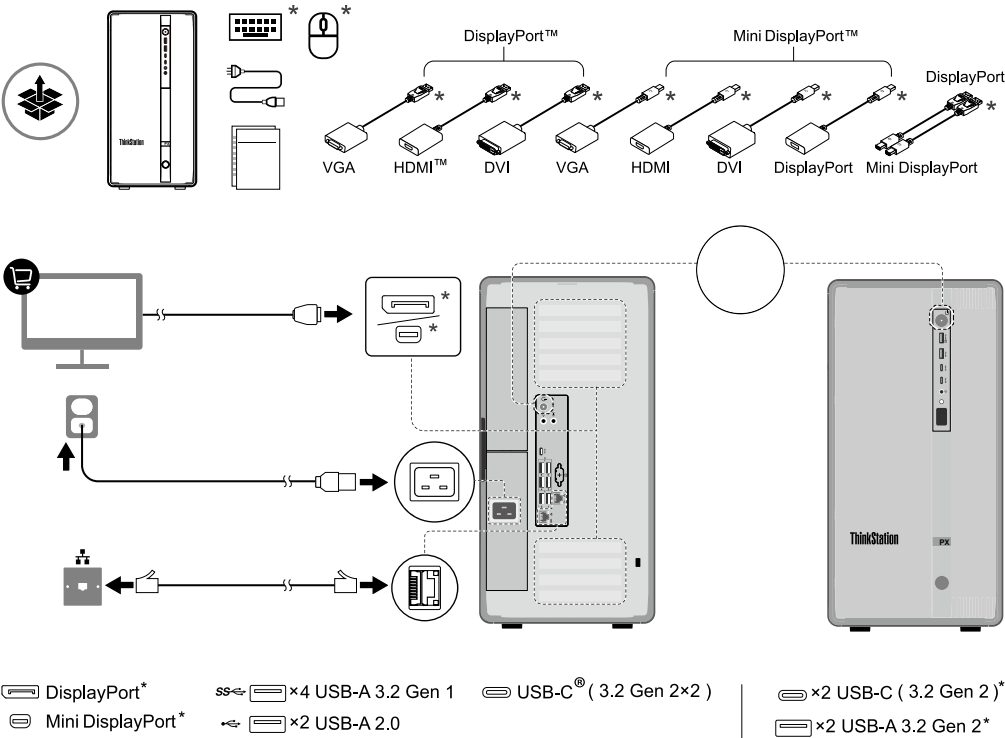
ThinkStation PX Setup Guide

User Guide Access

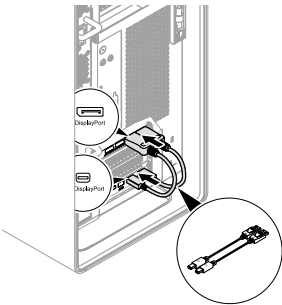


Turn to User Guide for USB transfer rate and more product information.

Overview



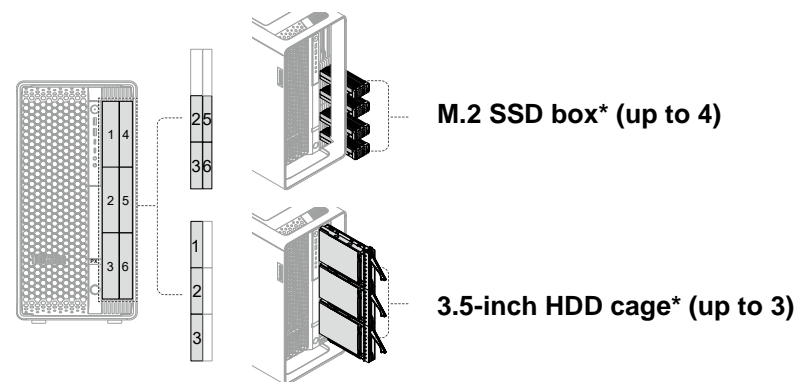
Thunderbolt™ 4 card



To use the Thunderbolt 4 card, connect the cable as illustrated.

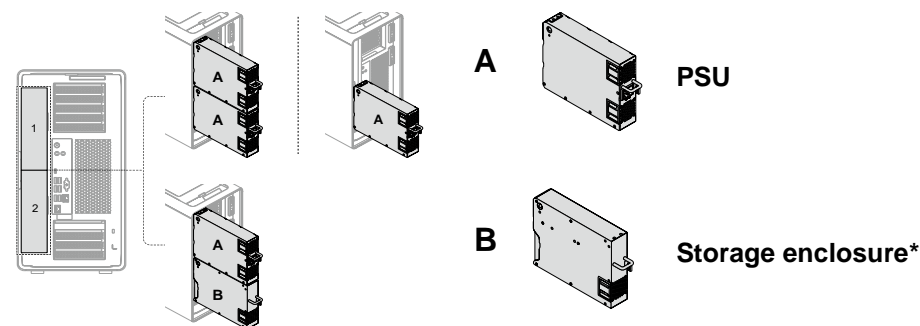
*For selected models

Front access bay



Note: M.2 SSD installation priority is higher than 3.5-inch HDD.

Power supply unit bay



Note: PSU bay storage enclosure installation priority is higher than PSU.

*For selected models

European Union (EU) / United Kingdom (UK) — radio frequency and power

This radio equipment operates with the following frequency bands and maximum radio-frequency power:

Technology	Frequency band	Maximum transmit power
WLAN 802.11b/g/n/ax	2400 - 2483.5 MHz	< 20 dBm
WLAN 802.11a/n/ac/ax	5150 - 5725 MHz	< 23 dBm
WLAN 802.11a/n/ac/ax	5725 - 5875 MHz	< 13.98 dBm
WLAN 802.11ax	5945 - 6425 MHz	< 23 dBm
Bluetooth BR/EDR/LE	2400 - 2483.5 MHz	< 20 dBm

Note: Not all wireless bands may be enabled depending on your product configuration. Usage of this device is limited to indoor locations in the bands 5150 - 5350 MHz and 5945 - 6425 MHz.

Third Edition (June 2024)

© Copyright Lenovo 2024.

LENOVO, LENOVO logo, ThinkStation, and ThinkStation logo are trademarks of Lenovo. DisplayPort and Mini Display are trademarks of the Video Electronics Standards Association. The terms HDMI and HDMI High-Definition Multimedia Interface are trademarks or registered trademarks of HDMI Licensing LLC in the United States and other countries. USB-C is a registered trademark of USB Implementers Forum. All other trademarks are the property of their respective owners.

LIMITED AND RESTRICTED RIGHTS NOTICE: If data or software is delivered pursuant to a General Services Administration "GSA" contract, use, reproduction, or disclosure is subject to restrictions set forth in Contract No. GS-35F-05925.



For FSC Mix logo only