

# **Alienware 34 Gaming Monitor**

## **AW3425DWM**

### Teardown Instructions

## Notes, cautions, and warnings

- ① **NOTE:** A NOTE indicates important information that helps you make better use of your product.
- △ **CAUTION:** A CAUTION indicates either potential damage to hardware or loss of data and tells you how to avoid the problem.
- ⚠ **WARNING:** A WARNING indicates a potential for property damage, personal injury, or death.

# Contents

<b>Safety instructions</b>	<b>4</b>
Before working inside your monitor	4
After working inside your monitor	4
<b>Disassembly and reassembly</b>	<b>5</b>
Recommended tools	5
Screw list	5
Stand	6
Removing the stand	6
Installing the stand	6
Back cover	7
Removing the back cover	7
Installing the back cover	8
Metal shield	11
Removing the metal shield	11
Installing the metal shield	14
System board and power board	17
Removing the system board and power board	17
Installing the system board and power board	19
Middle frame	20
Removing the middle frame	20
Installing the middle frame	21
Power-button board	23
Removing the power-button board	23
Installing the power-button board	24
I/O board and joystick-button board	25
Removing the I/O board and joystick-button board	25
Installing the I/O board and joystick-button board	26
<b>Regulatory information</b>	<b>28</b>
FCC notices (U.S. Only) and other regulatory information	28
EU product database for energy label and product information sheet	28
<b>Contacting Dell</b>	<b>29</b>

# Safety instructions

Use the following safety guidelines to protect your monitor from potential damage and to ensure your personal safety. Unless otherwise noted, each procedure included in this document assumes that you have read the safety information that is shipped with your monitor.

① **NOTE:** Before using the monitor, read the safety information that is shipped with your monitor and is printed on the product. Keep the documentation at a secure location for future reference.

⚠ **WARNING: Use of controls, adjustments or procedures other than those specified in this documentation may result in exposure to shock, electrical hazards and/or mechanical hazards.**

⚠ **CAUTION: The possible long-term effect of listening to audio at high volume through the headphones (on monitor that support it) may cause damage to your hearing ability.**

- Place the monitor on a solid surface and handle it carefully.
  - The screen is fragile and can be damaged if dropped or hit with a sharp object.
  - Ensure that your monitor is electrically rated to operate with the AC power available in your location.
  - Keep the monitor at room temperature. Excessive cold or hot conditions can have an adverse effect on the liquid crystal of the display.
  - Connect the power cable from the monitor to a wall outlet that is near and accessible.
- Do not place and use the monitor on a wet surface or near water.
- Do not subject the monitor to severe vibration or high impact conditions. For example, do not place the monitor inside a car trunk.
- Unplug the monitor when it is going to be left unused for an extended period.
- To avoid electric shock, do not attempt to remove any cover or touch the inside of the monitor.
- Read these instructions carefully. Keep this document for future reference. Follow all warnings and instructions marked on the product.
- Certain monitors can be wall mounted using the VESA mount that is purchased separately. Ensure to use the correct VESA specifications as mentioned in the wall-mounting section of the User's Guide.

For information on safety instructions, see the Safety, Environmental and Regulatory Information (SERI) document that is shipped with your monitor.

## Before working inside your monitor

### Steps

1. Save and close all open files and exit all open applications.
2. Turn off your monitor.
3. Disconnect your monitor and all attached devices from their electrical outlets.
4. Disconnect all attached network devices and peripherals, such as keyboard, mouse, and dock from your monitor.
  - ⚠ **CAUTION: To disconnect a network cable, first unplug the cable from your monitor and then unplug the cable from the network device.**
5. Remove any media card and optical disc from your monitor, if applicable.

## After working inside your monitor

⚠ **CAUTION: Leaving stray or loose screws inside your monitor may severely damage your monitor.**

### Steps

1. Replace all screws and ensure that no stray screws remain inside your monitor.
2. Connect any external devices, peripherals, or cables you removed before working inside your monitor.
3. Replace any media cards, discs, or any other parts that you removed before working inside your monitor.
4. Connect your monitor and all attached devices to the respective electrical outlets.
5. Turn on your monitor.



# Disassembly and reassembly

⚠ **CAUTION:** The information in this section is intended for authorized service technicians in the EMEA region. Dell prohibits users from disassembling the monitor, and any damage caused by unauthorized servicing will not be covered under the warranty.

## Recommended tools









The procedures in this document may require the following tools:

1. Screwdriver (Phillips-head, Hexagonal head)
2. Plastic scribe

## Screw list

- ① **NOTE:** When removing screws from a component, it is recommended to note the screw type, the quantity of screws, and then place them in a screw storage box. This is to ensure that the correct number of screws and correct screw type is restored when the component is replaced.
- ① **NOTE:** Some computers have magnetic surfaces. Ensure that the screws are not left attached to such surfaces when replacing a component.
- ① **NOTE:** Screw color may vary with the configuration ordered.

**Table 1. Screw list.**

Component	Screw types	Quantity	Screw images
Back cover	M4X10	4	
Metal shield	M3X4	4	
System board and Power board	M3X6	9	
Power board	M4X6	1	
Middle frame	M3X4	10	
Front trim	Q2X3.2	9	
Power-button board	Q2X2	2	
I/O board and joystick-button board	Q3X6	3	

# Stand

## Removing the stand

### Prerequisites

1. Follow the procedure in [Before working inside your monitor.](#)

### Steps

1. Place the monitor on a clean surface on a curved cushion.
2. Press the release button and pull the stand assembly away from the monitor.
3. Open the screw handle at the bottom of the stand base. Turn it anticlockwise to remove the stand riser from the stand base.

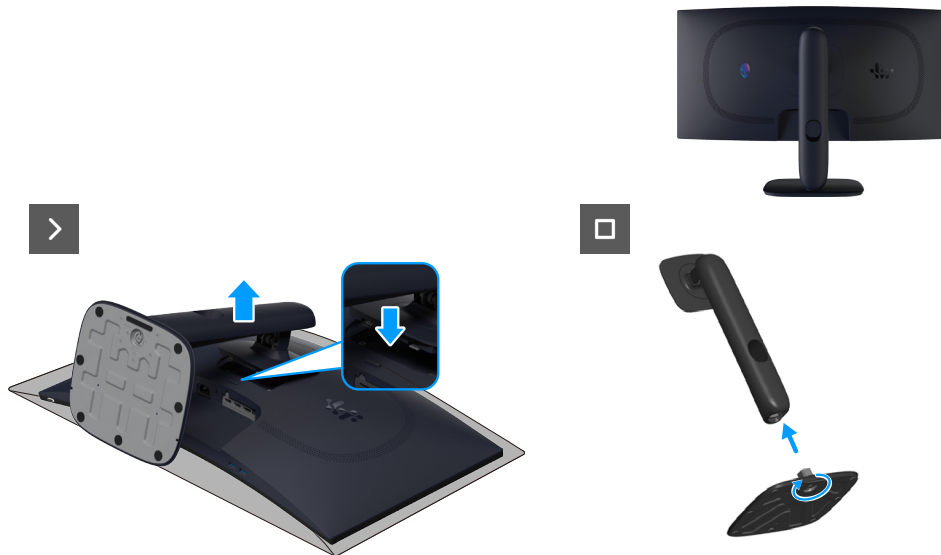


Figure 1. Removing the stand

## Installing the stand

### Steps

1. Align and place the stand riser on the stand base.
2. Open the screw handle at the bottom of the stand base. Turn it clockwise to secure the stand riser to the stand base.
3. Align the stand-riser bracket with the grooves at the back of the monitor.
4. Slide and gently press the stand assembly until it snaps into place.

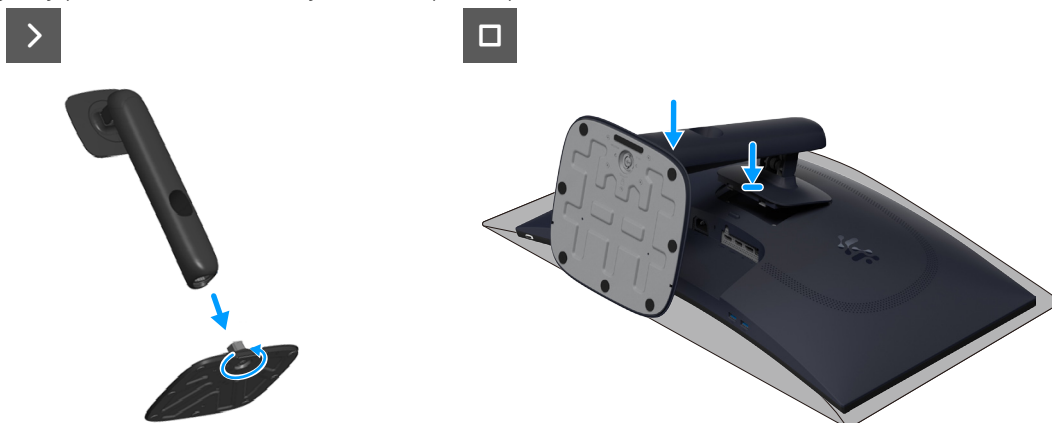


Figure 2. Installing the stand

### Next steps

1. Follow the procedure in [After working inside your monitor.](#)

# Back cover

## Removing the back cover

### Prerequisites

1. Follow the procedure in [Before working inside your monitor.](#)
2. Remove the [stand.](#)

### Steps

1. Remove the four screws (M4x10) that secure the back cover to the display assembly.



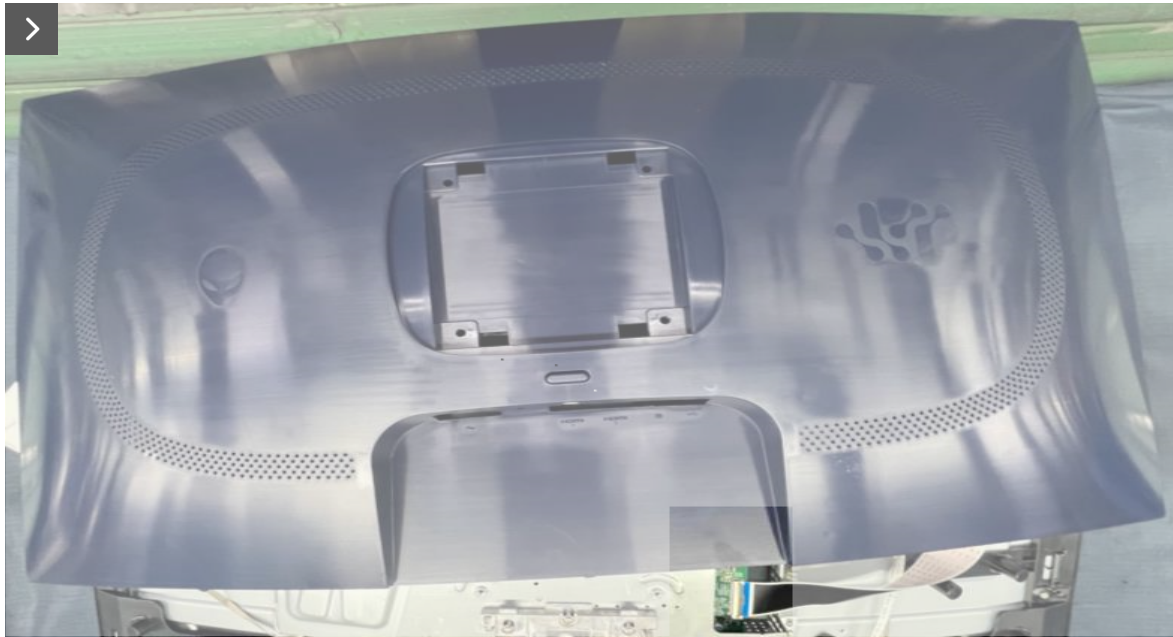
**Figure 3. Removing the back cover**

2. Using a plastic scribe, pry the back cover starting from the bottom edge of the monitor.

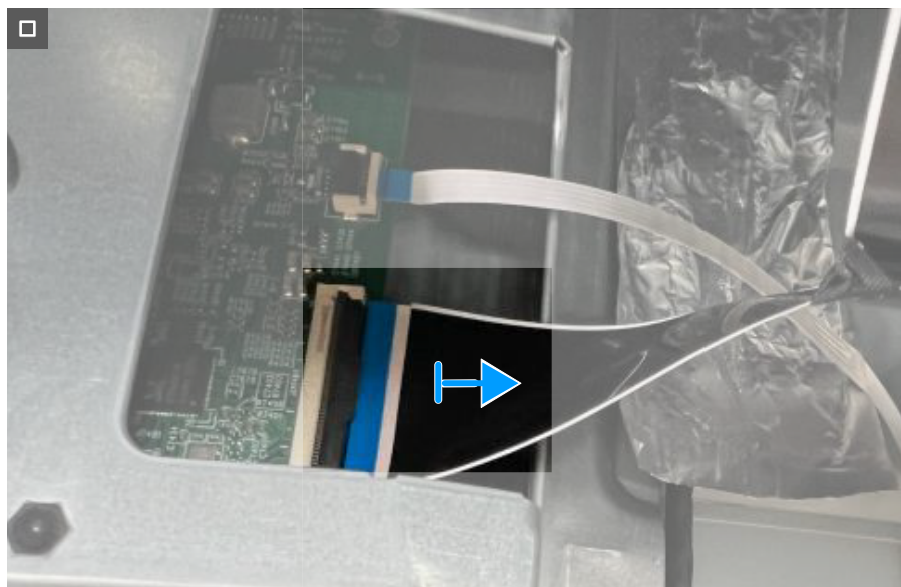


**Figure 4. Removing the back cover**

3. Lift the back cover partially from the bottom edge and disconnect the LVDS cable from the connector on the system board.



**Figure 5. Removing the back cover**



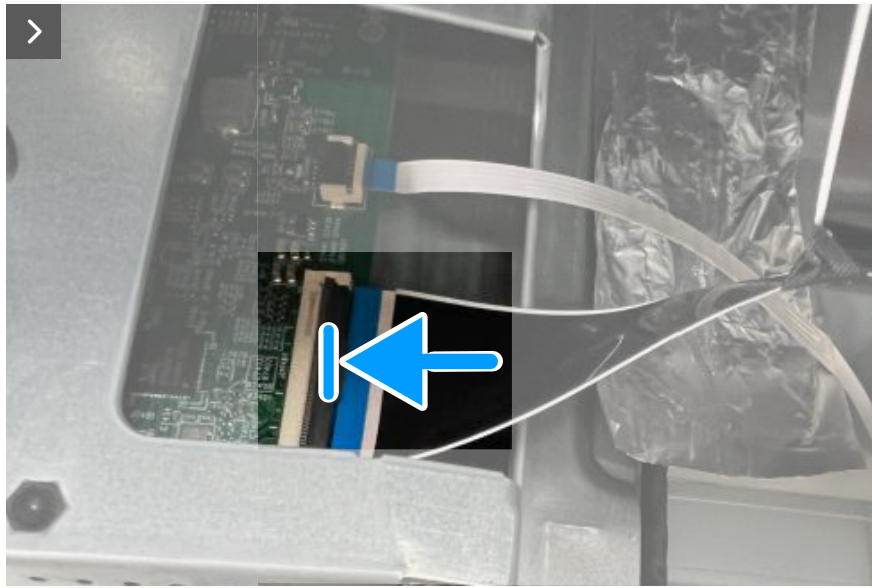
**Figure 6. Removing the back cover**

4. Lift and remove the back cover away from the monitor.

## **Installing the back cover**

### **Steps**

1. Connect the LVDS cable to the connector on the system board.
2. Align the screw holes on the back cover with the screw holes on the monitor, and gently press along the sides to snap the back cover into place.



**Figure 7. Installing the back cover**

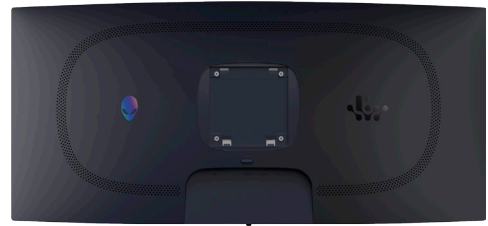


**Figure 8. Installing the back cover**

3. Replace the four screws (M4x10) to secure the back cover to the display assembly.



**4x**  
M4x10



**Figure 9. Installing the back cover**

**Next steps**

1. Install the [stand](#).
2. Follow the procedure in [After working inside your monitor](#).



# Metal shield

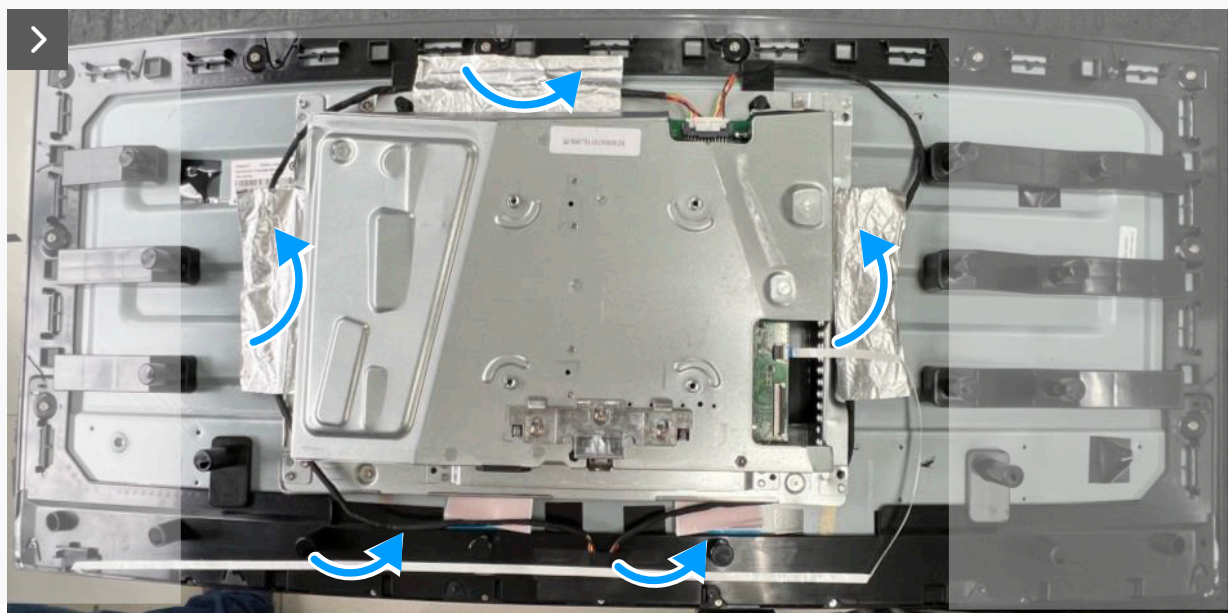
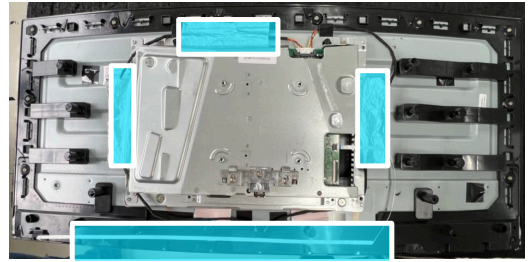
## Removing the metal shield

### Prerequisites

1. Follow the procedure in [Before working inside your monitor.](#)
2. Remove the [stand.](#)
3. Remove the [back cover.](#)

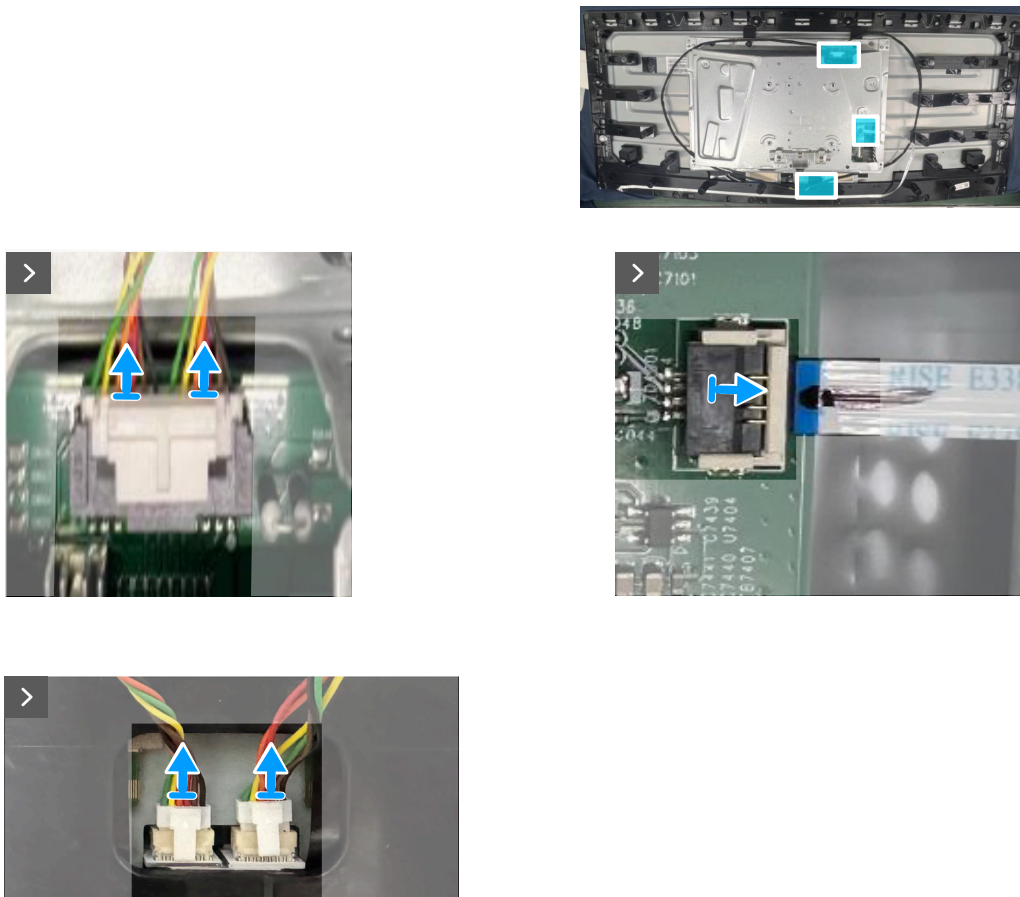
### Steps

1. Peel back the tapes that secure the cables and metal shield to the display panel.



**Figure 10. Removing the metal shield**

2. Disconnect the lightbar cables from the connector on the display panel and the system board.
3. Disconnect the keypad cable from the connector on the display panel and the system board.

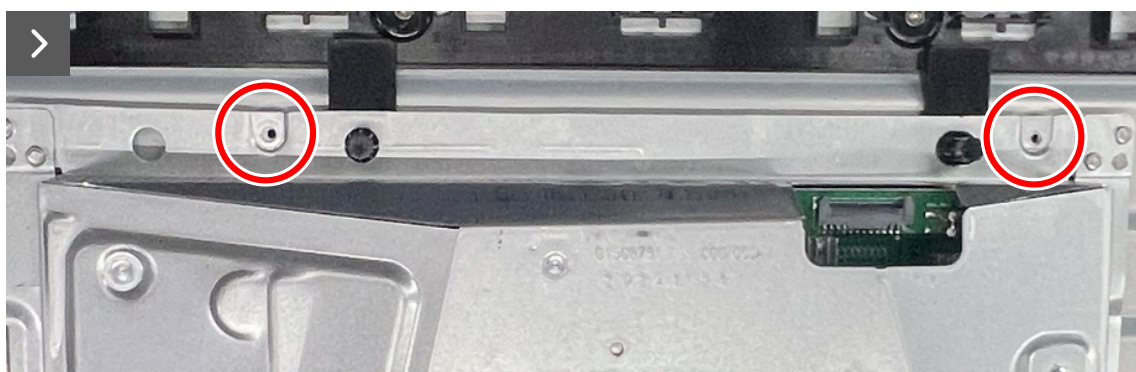
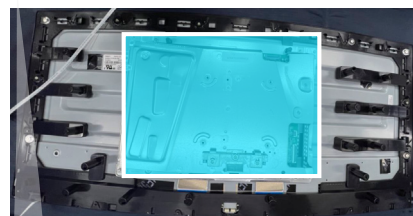


**Figure 11. Removing the metal shield**

4. Remove the four screws (M3X4) that secure the metal shield to the display panel.

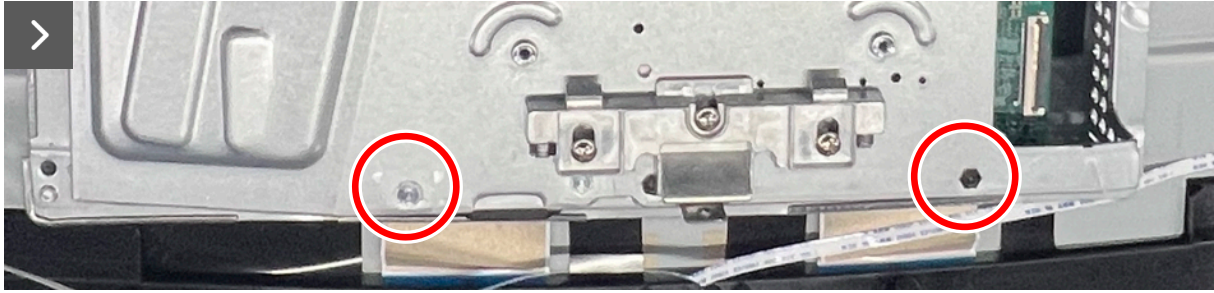


**4x**  
**M3x4**



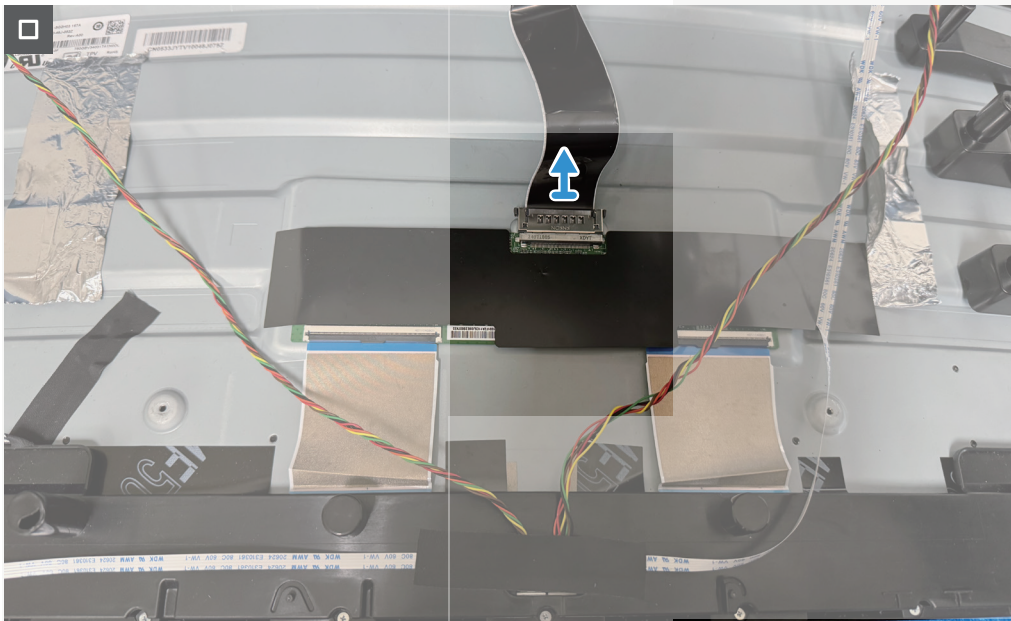
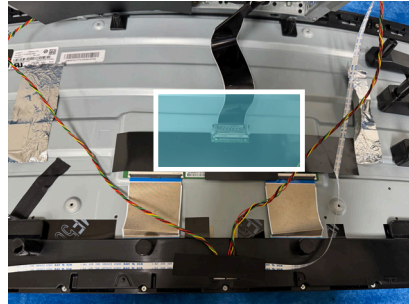
**Figure 12. Removing the metal shield**





**Figure 13. Removing the metal shield**

5. Disconnect the display cable from the connector on the display panel.

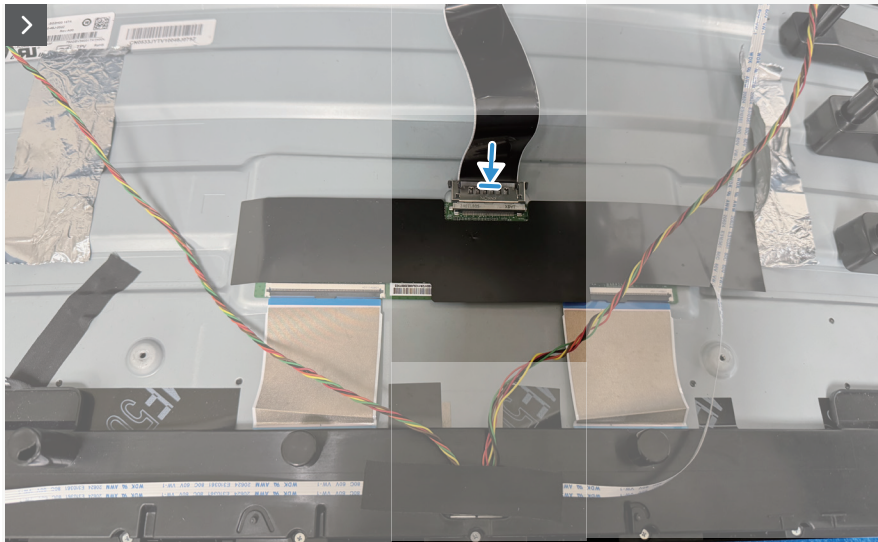
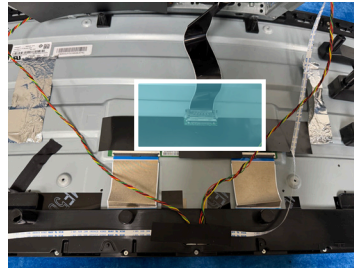


**Figure 14. Removing the metal shield**

## Installing the metal shield

### Steps

1. Connect the display cable to the connector on the display panel.

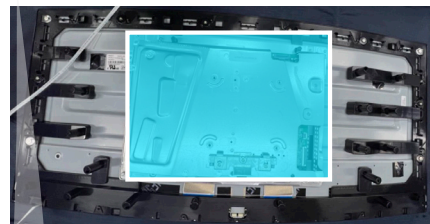


**Figure 15. Installing the metal shield**

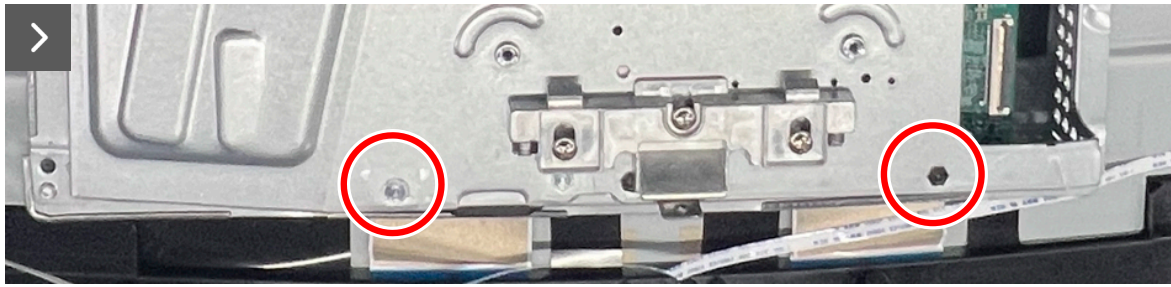
2. Align the screw holes on the metal shield to the screw holes on the display panel.
3. Replace the four screws (M3x4) to secure the metal shield to the display panel.



**4x**  
**M3x4**

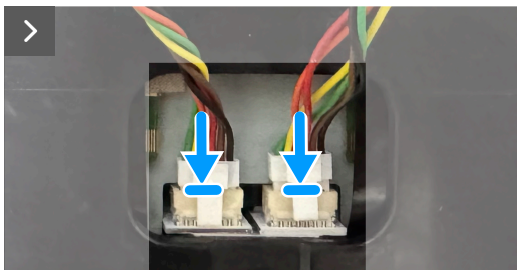
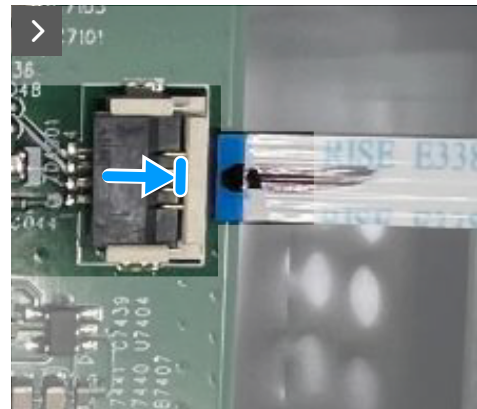
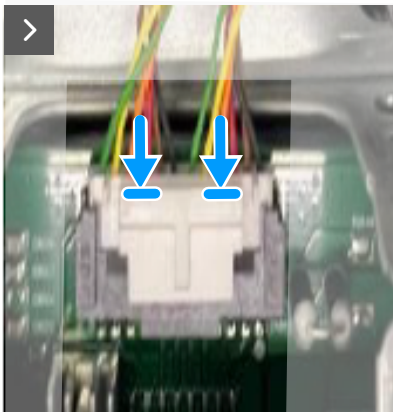
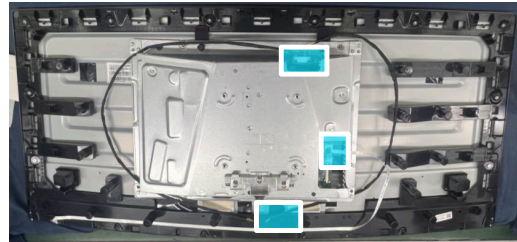


**Figure 16. Installing the metal shield**



**Figure 17. Installing the metal shield**

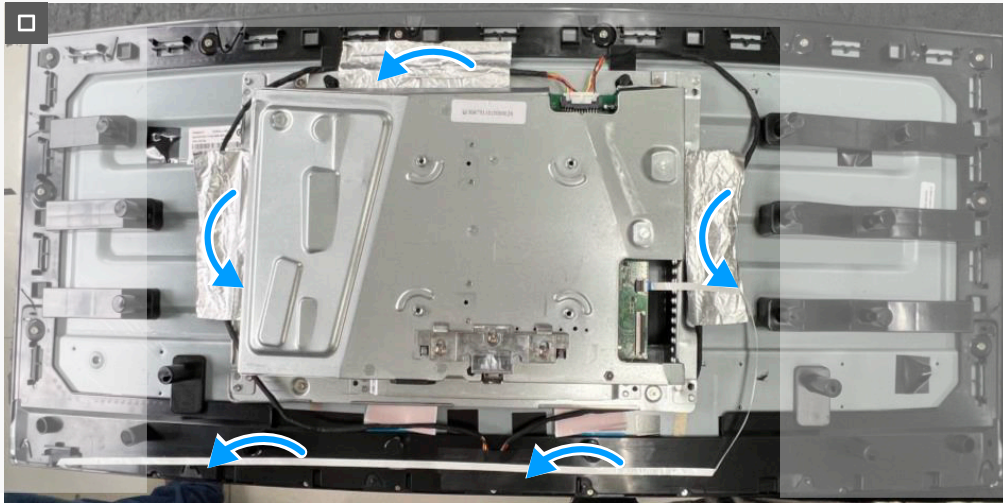
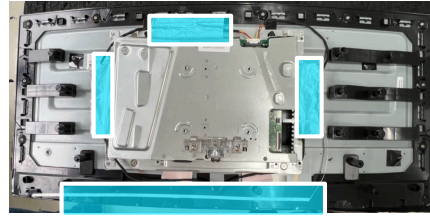
4. Connect the lightbar cables to the connector on the display panel and the system board.
5. Connect the keypad cable to the connector on the display panel and the system board.



**Figure 18. Installing the metal shield**

6. Adhere the tapes to secure the cables and metal shield to the display panel.





**Figure 19. Installing the metal shield**

**Next steps**

1. Install the [back cover](#).
2. Install the [stand](#).
3. Follow the procedure in [After working inside your monitor](#).

# System board and power board

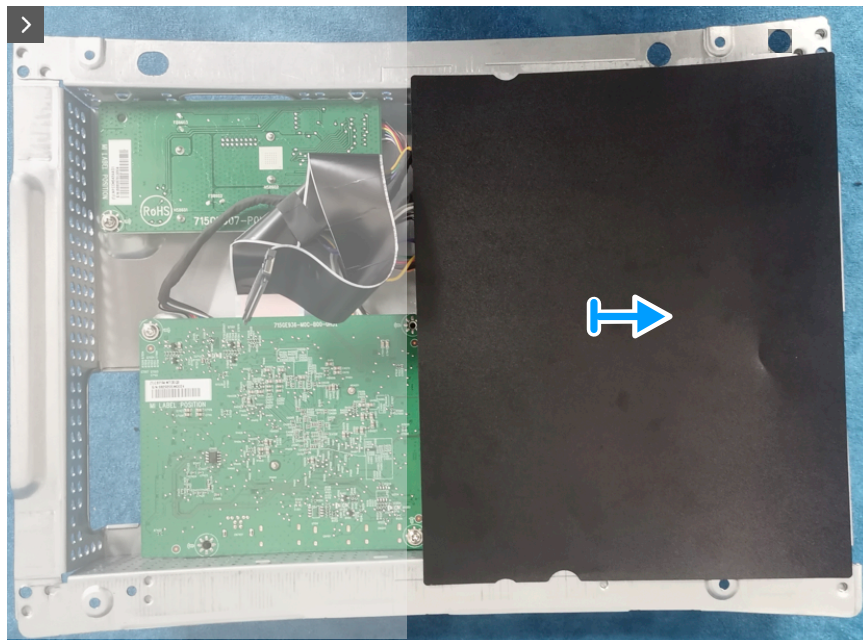
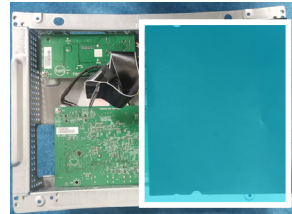
## Removing the system board and power board

### Prerequisites

1. Follow the procedure in [Before working inside your monitor.](#)
2. Remove the [stand.](#)
3. Remove the [back cover.](#)
4. Remove the [metal shield.](#)

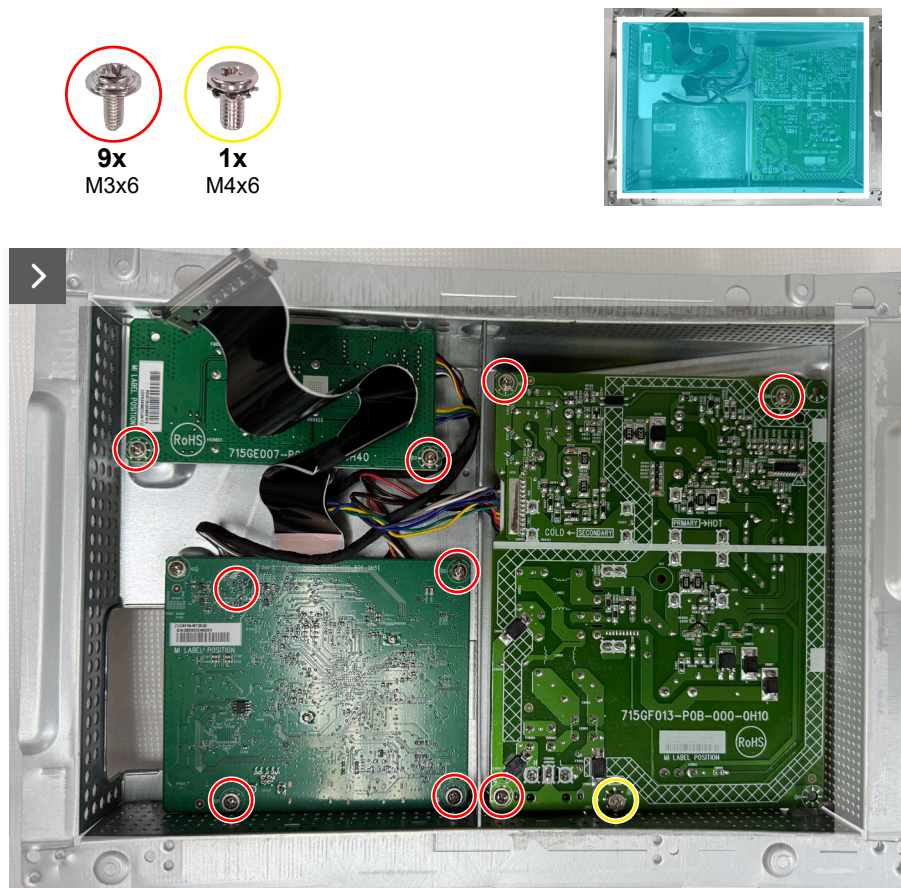
### Steps

1. Remove the Mylar sheet from the power board.



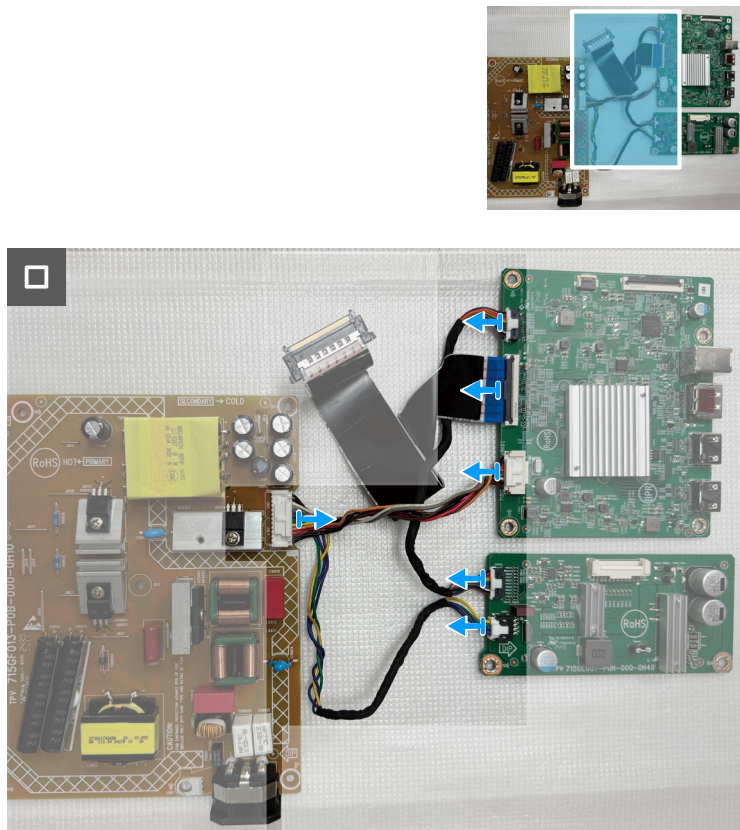
**Figure 20. Removing the system board and power board**

2. Remove the nine screws (M3x6) and the screw (M4X6) that secures the system board, power board and converter board to the metal shield.



**Figure 21. Removing the system board and power board**

3. Disconnect the cables from the connectors on the system board, power board and converter board.



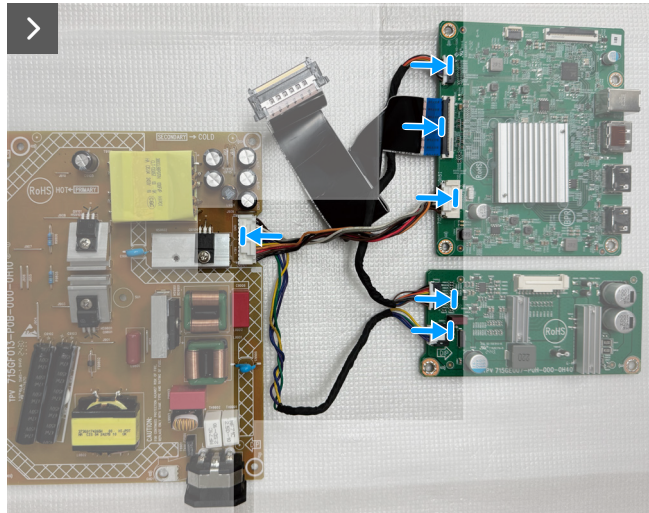
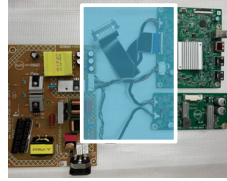
**Figure 22. Removing the system board and power board**



## Installing the system board and power board

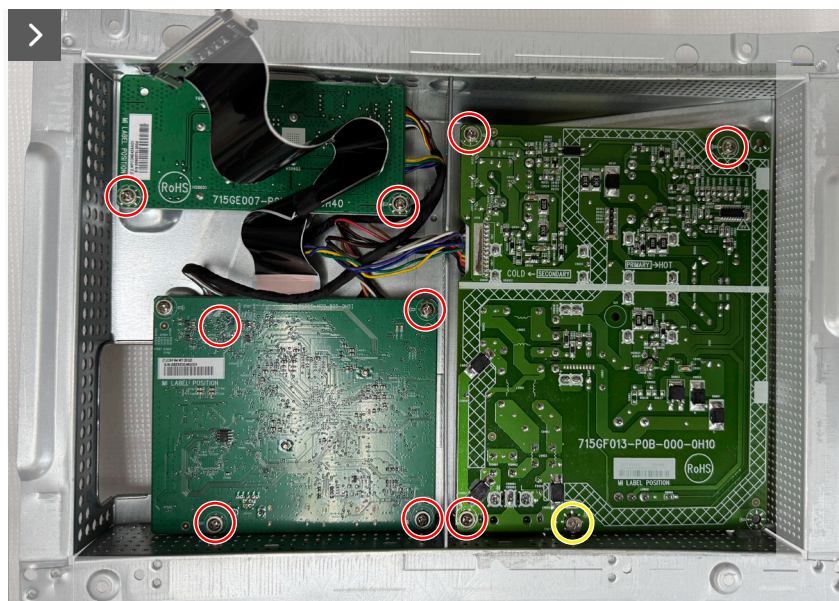
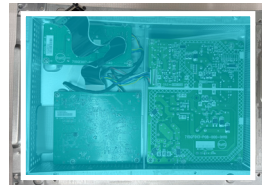
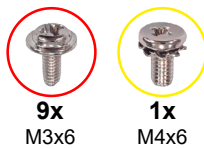
### Steps

1. Connect the cables to the connectors on the system board, power board and converter board.



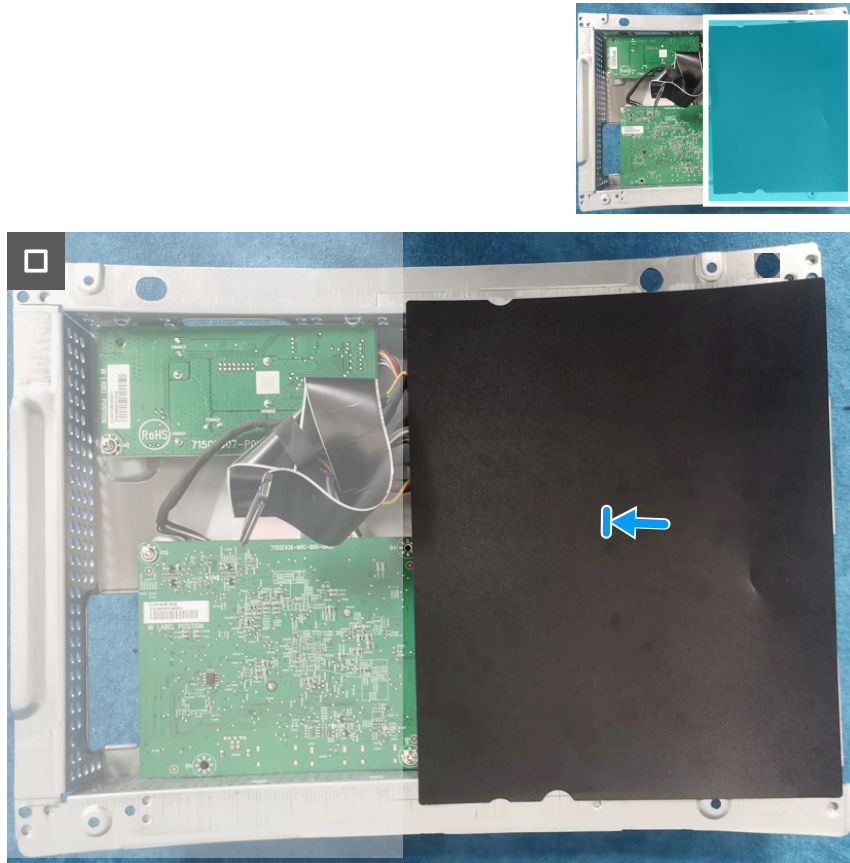
**Figure 23. Installing the system board and power board**

2. Replace the nine screws (M3x6) and the screw (M4X6) to secure the system board, power board and converter board to the metal shield.



**Figure 24. Installing the system board and power board**

3. Place the Mylar sheet on the power board.



**Figure 25. Installing the system board and power board**

#### Next steps

1. Install the [metal shield](#).
2. Install the [back cover](#).
3. Install the [stand](#).
4. Follow the procedure in [After working inside your monitor](#).

## Middle frame

### Removing the middle frame

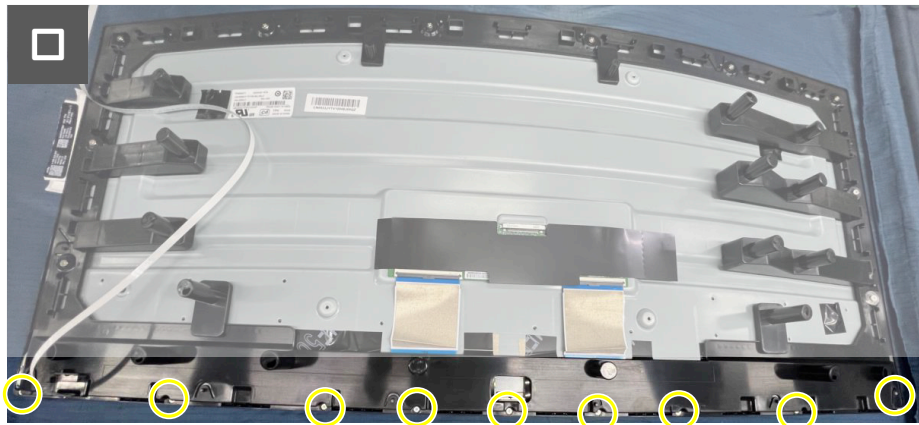
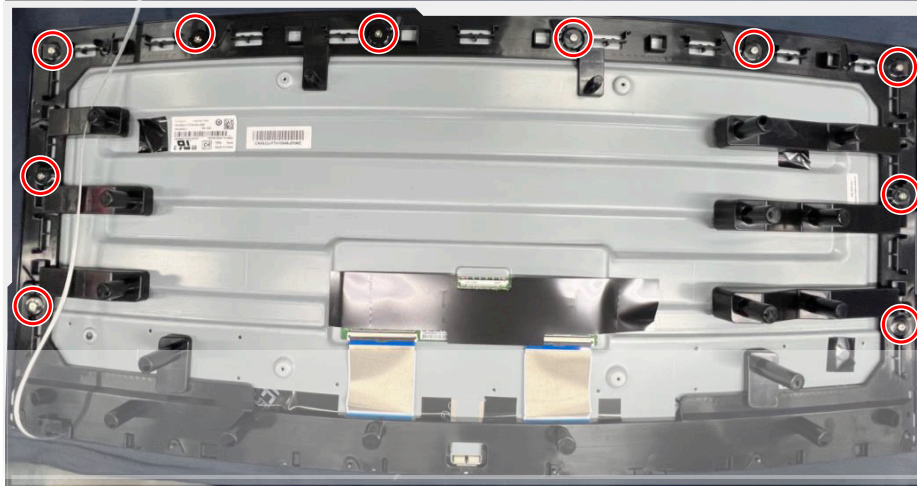
#### Prerequisites

1. Follow the procedure in [Before working inside your monitor](#).
2. Remove the [stand](#).
3. Remove the [back cover](#).
4. Remove the [metal shield](#).

#### Steps

1. Remove the ten screws (M3X4) and the nine screws (Q2X3.2) that secure the middle frame to the display panel.





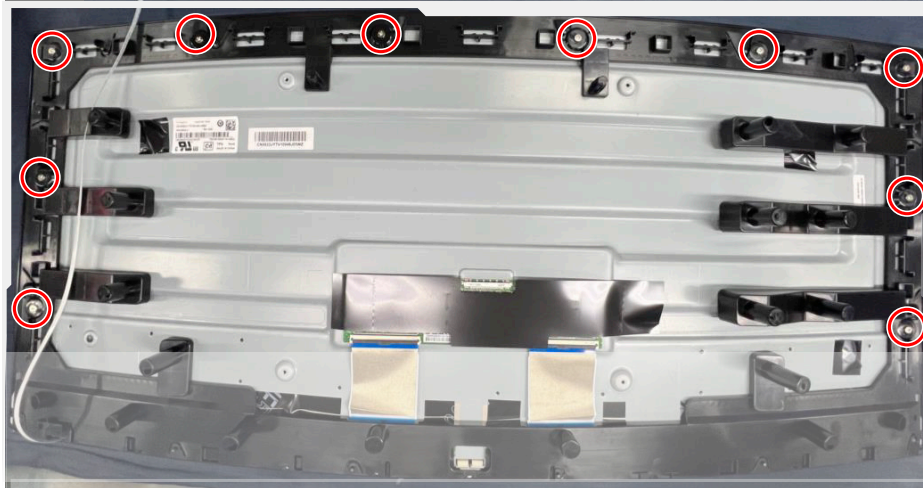
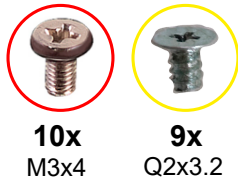
**Figure 26. Removing the middle frame**

2. Lift and remove the middle frame away from the display panel.

## Installing the middle frame

### Steps

1. Replace the ten screws (M3X4) and the nine screws (Q2X3.2) to secure the middle frame to the display panel.



**Figure 27. Installing the middle frame**

#### Next steps

1. Install the [metal shield](#).
2. Install the [back cover](#).
3. Install the [stand](#).
4. Follow the procedure in [After working inside your monitor](#).

# Power-button board

## Removing the power-button board

### Prerequisites

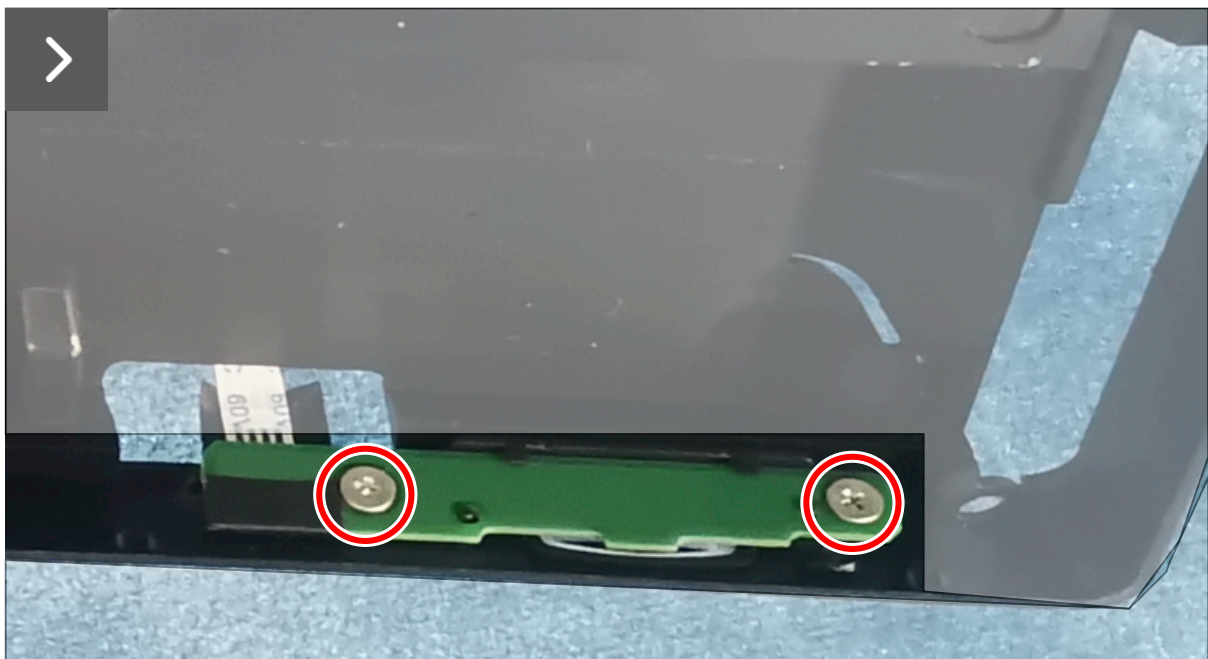
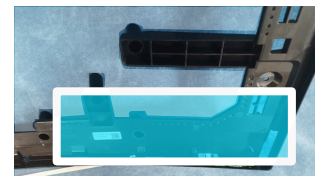
1. Follow the procedure in [Before working inside your monitor.](#)
2. Remove the [stand](#).
3. Remove the [back cover](#).
4. Remove the [metal shield](#).
5. Remove the [middle frame](#).

### Steps

1. Remove the two screws (Q2x2) that secure the power-button board to the middle frame.
2. Lift the power-button board away from the middle frame.



**2x**  
Q2x2



**Figure 28. Removing the power-button board**



**Figure 29. Removing the power-button board**

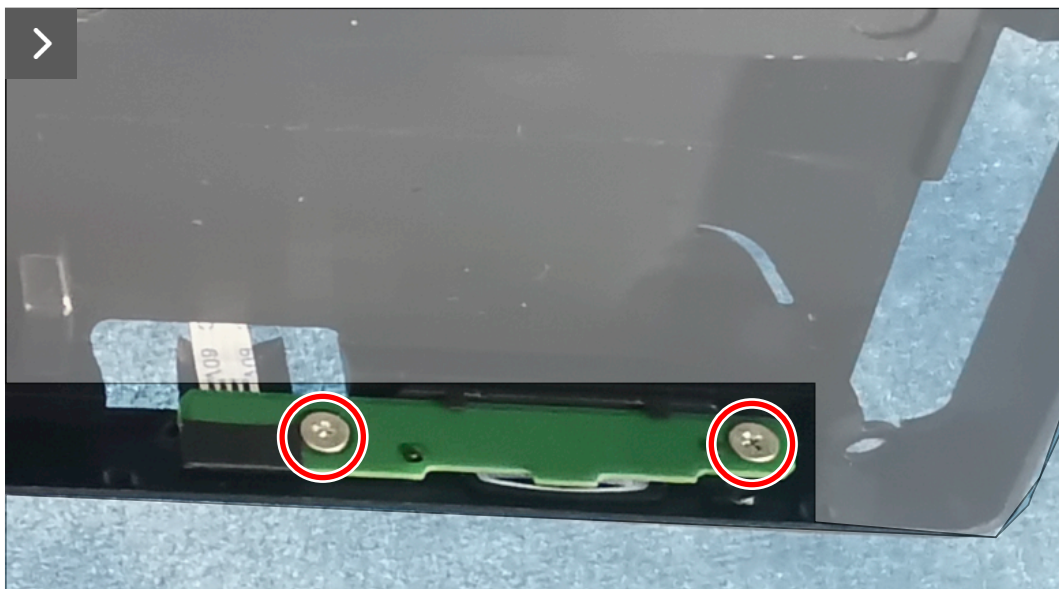
## Installing the power-button board

### Steps

1. Align and place the power-button board in its slot on the middle frame.
2. Replace the two screws (Q2x2) to secure the power-button board to the middle frame.



**2x**  
Q2x2



**Figure 30. Installing the power-button board**

### Next steps

1. Install the [middle frame](#).
2. Install the [metal shield](#).
3. Install the [back cover](#).
4. Install the [stand](#).
5. Follow the procedure in [After working inside your monitor](#).



# I/O board and joystick-button board

## Removing the I/O board and joystick-button board

### Prerequisites

1. Follow the procedure in [Before working inside your monitor.](#)
2. Remove the [stand.](#)
3. Remove the [back cover.](#)

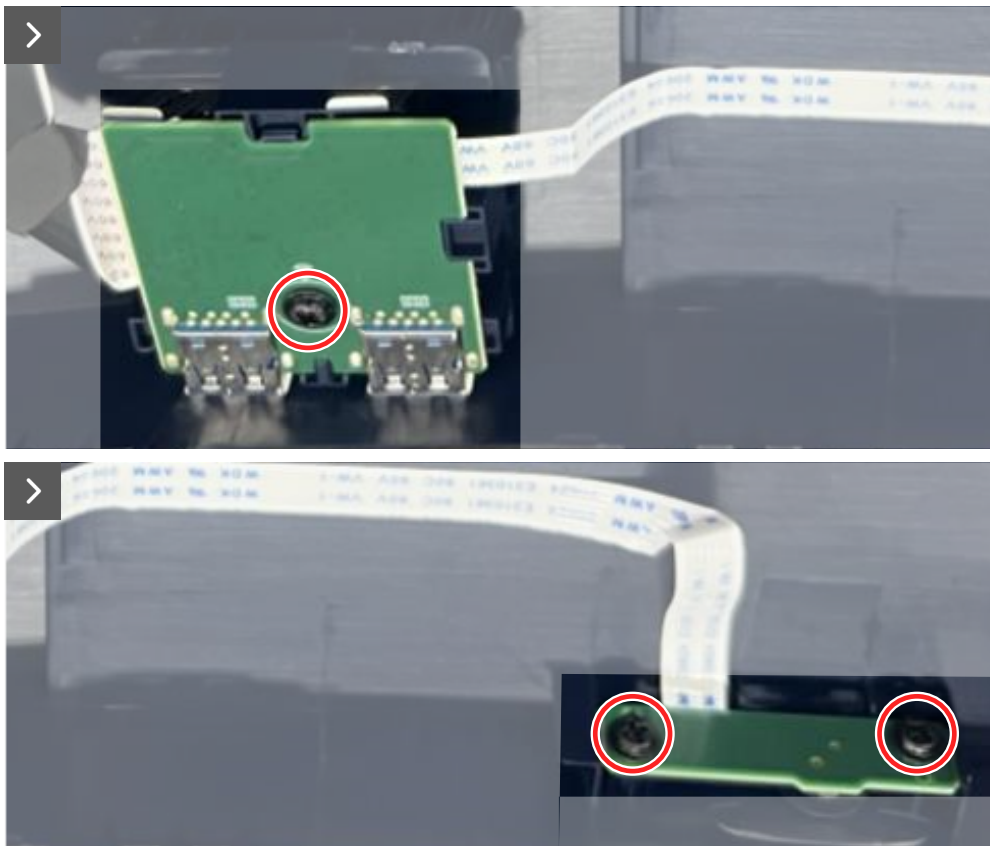
### Steps

1. Remove the screw (Q3x6) that secures the I/O board to the back cover.
2. Remove the two screws (Q3x6) that secure the joystick-button board to the back cover.



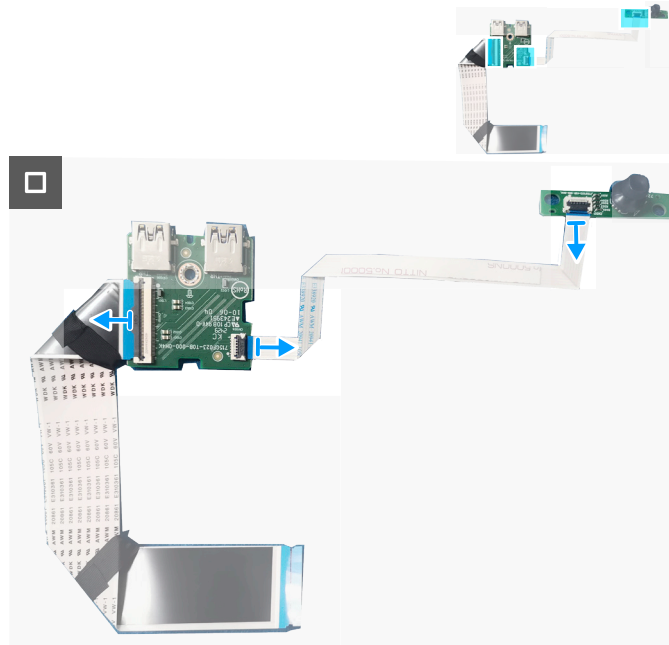
**3x**

Q3x6



**Figure 31. Removing the I/O board and joystick-button board**

3. Disconnect the cables from the connectors on the I/O board and the joystick-button board.

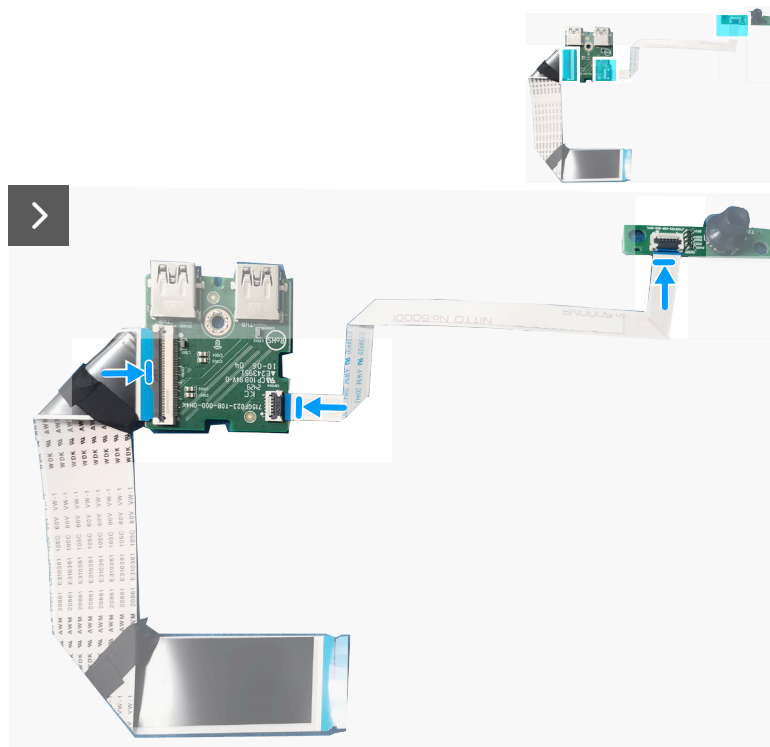


**Figure 32. Removing the I/O board and joystick-button board**

## Installing the I/O board and joystick-button board

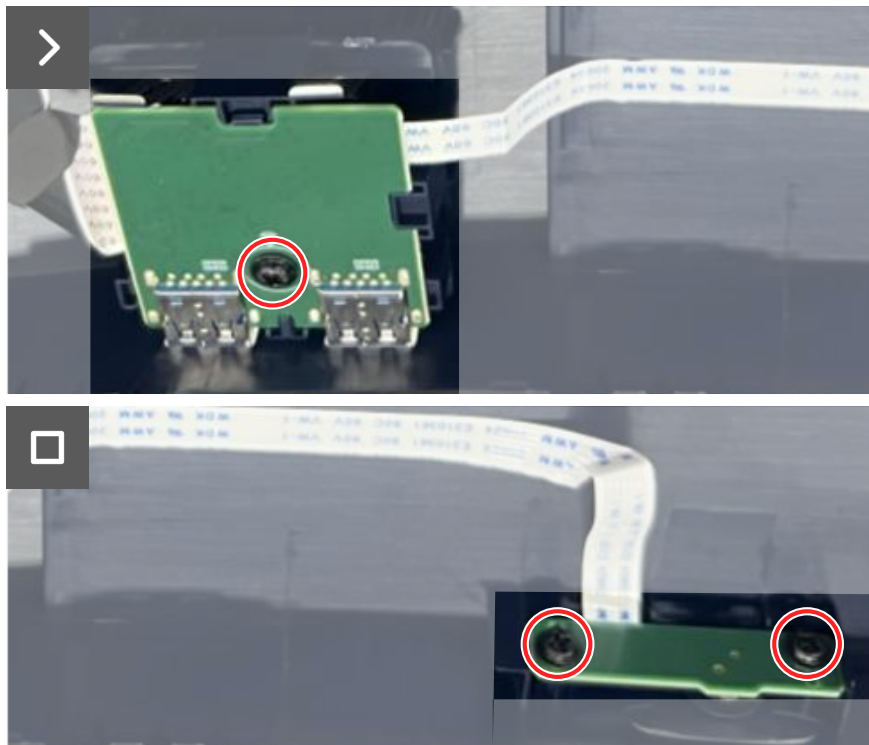
### Steps

1. Connect the cables to the connectors on the I/O board and the joystick-button board.



**Figure 33. Installing the I/O board and joystick-button board**

2. Replace the screw (Q3x6) to secure the I/O board to the back cover.
3. Replace the two screws (Q3x6) to secure the joystick-button board to the back cover.



**Figure 34. Installing the I/O board and joystick-button board**

**Next steps**

1. Install the [back cover](#).
2. Install the [stand](#).
3. Follow the procedure in [After working inside your monitor](#).

# Regulatory information

## FCC notices (U.S. Only) and other regulatory information

For FCC notices and other regulatory information, see the regulatory compliance website at [Dell Regulatory Compliance Home Page](#).

## EU product database for energy label and product information sheet

AW3425DWM: <https://eprel.ec.europa.eu/qr/2167431>



# Contacting Dell

To contact Dell for sales, technical support, or customer service issues, see [Contact Support at Dell Support Site](#).

- ① **NOTE:** Availability varies by country, region, or product, and some services may not be available in your country.
- ① **NOTE:** If you do not have an active Internet connection, you can find contact information in your purchase invoice, packing slip, bill, or Dell product catalog.