



## 43" All-in-One PCAP Interactive Display for Smart Collaboration Spaces

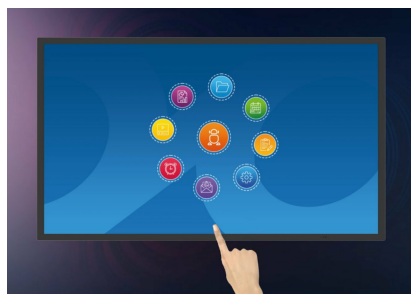
The ProLite T4329AS-B1AG is a 43" all-in-one PCAP touchscreen display built for the evolving needs of modern workspaces, especially huddle spaces where creativity, flexibility, and seamless sharing take center stage.

Powered by Android OS, this interactive display delivers a user-friendly and highly adaptable experience. You can install your preferred apps directly on the device, enabling customized workflows tailored to your environment — whether in a collaborative meeting area, an enterprise innovation hub, or an educational breakout room.

The USB-C loop-through feature simplifies connectivity by allowing multiple displays to be easily daisy-chained while transmitting power, data, and video — all through a single cable. This reduces cable clutter and setup time, making it ideal for dynamic workspaces. The included wall mounting bracket makes installation straightforward and secure.

With [iiSignage²](#) (CMS), [iiControl](#) (DMS), and [iiShare](#) (Wireless Presentation) you gain full control over content and messaging, even remotely — perfect for updating shared information or branded visuals on the fly. The integrated [EShare](#) app brings wireless screen sharing and collaboration to life, supporting multi-user interaction and real-time ideation.

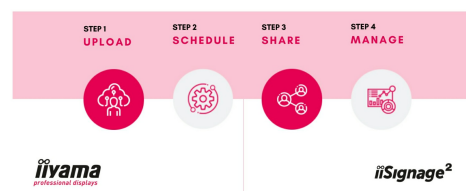
The T4329AS-B1AG isn't just a display — it's a collaboration tool designed to empower teams, streamline communication, and make every meeting count.



Android OS

Thanks to Android OS, you can easily customize the display to your needs by installing applications directly to it.

## 4 SIMPLE STEPS TO REACH YOUR AUDIENCE



iiSignage²

iiSignage² is our digital signage content management platform to easily show and control your content and to manage your displays in a secure way. The Content Management System (CMS) gives you total control of your messaging and advertising remotely and safely.

## 01 DISPLAY CHARACTERISTICS

Design	Edge to edge glass
Diagonal	42.5", 108cm
Panel	VA, DLED
Touch Glass	Anti-Glare Glass with Anti-Gloss treatment, Smooth writing, Zero Gap - Air Bonded, DeepContrast PCAP
Native resolution	3840 x 2160 (8.3 MegaPixels 4K UHD)
Aspect ratio	16:9
Panel brightness	500 cd/m <sup>2</sup>
Brightness	420 cd/m <sup>2</sup> with touch
Light transmittance	83%
Static contrast	4000:1
Response time (GTG)	6.5ms
Viewing zone	horizontal/vertical: 178°/178°, right/left: 89°/89°, up/down: 89°/89°
Colour support	1.07G (8 Bits+FRC) (NTSC 72%)
Horizontal Sync	28 - 160kHz
Viewable area W x H	941.2 x 529.4mm, 37 x 20.8"
Pixel pitch	0.245mm
Bezel colour and finish	black, matte

## 02 TOUCH

Touch technology	DeepContrast-PCAP
Touch points	20 (HID, only with supported OS)
Touch accuracy	+/- 2.5mm
Touch method	stylus, finger, glove
Touch interface	USB
Supported operating systems	All iiyama monitors are Plug & Play and compatible with Windows and Linux. For details regarding the supported OS for the touch models, please refer to the driver instruction file available in the downloads section.
Through-Glass	6mm
Palm rejection	yes

## 03 INTERFACES / CONNECTORS / CONTROLS

Digital signal input	HDMI x2 ( 1.4/ 2.0, max. 3840x 2160 @60Hz) USB-C x1 (3.2, DP 1.2 Alt mode, 15W PD)
Monitor control input	RS-232c x1 RJ45 (LAN) x1 IR x1 (3.5mm)
Audio output	Speakers 2 x 10W
Monitor control output	RS-232c x1 IR loop through x1 (3.5mm)
HDCP	1.4 / 2.2
USB ports	x2 (2.0 with Multi-Media support)
RS-232c	x1

## 04 FEATURES

<b>Integrated software</b>	Android 14 OS, Whiteboard, iiSignage², iiControl, iiShare, EShare, FailOver, TeamViewer, Web-, PDF & Media Player, iiBrowser, File manager
<b>WiFi</b>	WiFi 5 @ 2.4G / 5G
<b>Hardware</b>	CPU: MTK9679 Quad-core A73*4, GPU: Mali G51, RAM: 4GB, ROM: 32GB
<b>Extra</b>	Touch Through-Glass
<b>Kiosk mode</b>	yes
<b>Max. non-stop operating time</b>	24/7
<b>Anti image retention</b>	yes
<b>Glass thickness</b>	3.7mm
<b>Glass hardness</b>	8H
<b>Housing (bezel)</b>	metal
<b>OSD key lock</b>	yes
<b>Remote control lock</b>	yes

## 05 GENERAL

<b>OSD languages</b>	EN, DE, FR, ES, RU, JP, NL, PL
<b>Control buttons</b>	Power (long press for Quick Menu (source, volume +, volume -, brightness +, brightness -, Touch unlock)
<b>User controls</b>	picture (brightness, contrast, sharpness, black level, tint, colour, noise reduction, gamma selection, low blue light, color temp., color control, picture reset), audio (balance, treble, bass, volume, audio out, max. volume, min. volume, mute, speakers setting audio reset), OSD setting (OSD timeout, OSD H position, OSD V position, OSD transparency, information OSD, side bar), general (logo and animation, wallpaper, no signal image, schedule, off timer), screen (zoom mode, custom zoom, system rotation, scree reset), device (power on status, RS232 routing, IR control, Physical button, motorized stand, power saving, panel saving, monitor info, Touch lock, other), system (language, system update, setng reset, factory reset, Android setting), admin (menu lock, meeting lock, HDMI CEC, kiosk mode, screen share, Miracast standby, log export)
<b>Plug&amp;Play</b>	DDC2B

## 06 MECHANICAL

<b>Orientation</b>	landscape, portrait
<b>Fanless design</b>	yes
<b>VESA mounting</b>	300 x 300mm
<b>Operation temperature range</b>	0°C - 40°C
<b>Operation temperature range (-°/+°)</b>	-20°C - 60°C
<b>MTBF</b>	50000 hours (excluding backlight)

## 07 ACCESSORIES INCLUDED

<b>Cables</b>	power, HDMI, RS-232c
<b>Touch pen</b>	x2 (Dual tips)
<b>Guides</b>	quick start guide, safety guide
<b>Other</b>	Wall Mounting Bracket (VESA 300x300), Magnetic holding places for Touch pens (on sides in landscape)
<b>Remote control</b>	yes (batteries included)

## 08 POWER MANAGEMENT

<b>Power supply unit</b>	internal
<b>Power supply</b>	AC 100 - 240V, 50/60Hz

Power usage

98W typical, 0.5W stand by, 0.3W off mode

09 SUSTAINABILITY

Regulations	CB, CE, TÜV-Bauart, EAC, RoHS support, ErP, WEEE, REACH, UKCA, cTUVus
Energy efficiency class (Regulation (EU) 2017/1369)	G
REACH SVHC	above 0.1%: Lead

10 DIMENSIONS / WEIGHT

Product dimensions W x H x D	989.6 x 577.8 x 72.8mm
Box dimensions W x H x D	1115 x 730 x 144mm
Weight (without box)	13.7kg
Weight (with box)	17.6kg
EAN code	4948570125579

All trademarks and registered trademarks acknowledged. E & O E. Specification subject to change without notice. All LCD's comply with ISO-9241-307:2008 in connection with pixel defects.

© IIYAMA CORPORATION. ALL RIGHTS RESERVED