

**TOUCHSCREENS****INFORMATION**

## 43" All-in-One PCAP Interactive Display for Smart Collaboration Spaces

The ProLite T4329AS-B1AG is a 43" all-in-one PCAP touchscreen display built for the evolving needs of modern workspaces, especially huddle spaces where creativity, flexibility, and seamless sharing take center stage.

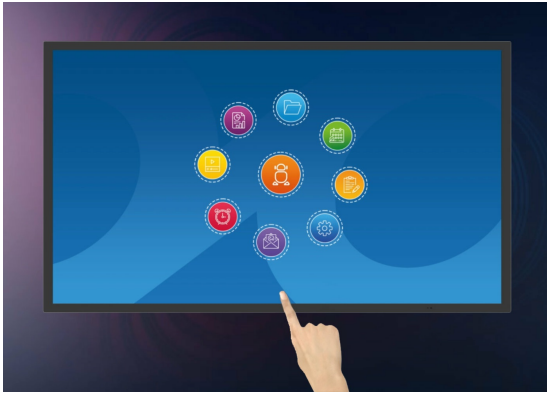
Powered by Android OS, this interactive display delivers a user-friendly and highly adaptable experience. You can install your preferred apps directly on the device, enabling customized workflows tailored to your environment — whether in a collaborative meeting area, an enterprise innovation hub, or an educational breakout room.

The USB-C loop-through feature simplifies connectivity by allowing multiple displays to be easily daisy-chained while transmitting power, data, and video — all through a single cable. This reduces cable clutter and setup time, making it ideal for dynamic workspaces. The included wall mounting bracket makes installation straightforward and secure.

With [iiSignage<sup>2</sup>](#) (CMS), [iiControl](#) (DMS), and [iiShare](#) (Wireless Presentation) you gain full control over content and messaging, even remotely — perfect for updating shared information or branded visuals on the fly. The integrated [EShare](#) app brings wireless screen sharing and collaboration to life, supporting multi-user interaction and real-time ideation.

The T4329AS-B1AG isn't just a display — it's a collaboration tool designed to empower teams, streamline communication, and make every meeting count.



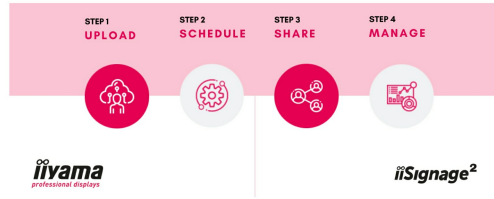


## Android OS

Thanks to Android OS, you can easily customize the display to your needs by installing applications directly to it.

### 4 SIMPLE STEPS

TO REACH YOUR AUDIENCE



## iiSignage<sup>2</sup>

iiSignage<sup>2</sup> is our digital signage content management platform to easily show and control your content and to manage your displays in a secure way. The Content Management System (CMS) gives you total control of your messaging and advertising remotely and safely.



## USB-C Loop Through

One cable, zero clutter. USB-C Loop Through lets you connect and daisy-chain devices with ease—video, data, and power all in one go. It's plug, play, and pass it on. Smart connectivity that keeps your setup clean and simple.



## Touch Pens

Two stylish dual tip Touch pens are included and they can be placed at both sides of the display at the magnetic holding spots.

## SPECIFICATION

### 01 DISPLAY CHARACTERISTICS

<b>Design</b>	Edge to edge glass
<b>Diagonal</b>	42.5", 108cm
<b>Panel</b>	VA, DLED
<b>Touch Glass</b>	Anti-Glare Glass with Anti-Gloss treatment, Smooth writing, Zero Gap - Air Bonded, DeepContrast PCAP
<b>Native resolution</b>	3840 x 2160 (8.3 MegaPixels 4K UHD)
<b>Aspect ratio</b>	16:9
<b>Panel brightness</b>	500 cd/m <sup>2</sup>
<b>Brightness</b>	420 cd/m <sup>2</sup> with touch
<b>Light transmittance</b>	83%
<b>Static contrast</b>	4000:1
<b>Response time (GTG)</b>	6.5ms
<b>Viewing zone</b>	horizontal/vertical: 178°/178°, right/left: 89°/89°, up/down: 89°/89°
<b>Colour support</b>	1.07G (8 Bits+FRC) (NTSC 72%)
<b>Horizontal Sync</b>	28 - 160kHz
<b>Viewable area W x H</b>	941.2 x 529.4mm, 37 x 20.8"
<b>Pixel pitch</b>	0.245mm
<b>Bezel colour and finish</b>	black, matte

### 02 TOUCH

<b>Touch technology</b>	DeepContrast-PCAP
<b>Touch points</b>	20 (HID, only with supported OS)
<b>Touch accuracy</b>	+/- 2.5mm
<b>Touch method</b>	stylus, finger
<b>Touch interface</b>	USB
<b>Supported operating systems</b>	All iiyama monitors are Plug & Play and compatible with Windows and Linux. For details regarding the supported OS for the touch models, please refer to the driver instruction file available in the downloads section.
<b>Palm rejection</b>	yes

### 03 INTERFACES / CONNECTORS / CONTROLS

<b>Digital signal input</b>	HDMI x2 ( 1.4/ 2.0, max. 3840x 2160 @60Hz) USB-C x1 (3.2, DP 1.2 Alt mode, 15W PD)
<b>Monitor control input</b>	RS-232c x1 RJ45 (LAN) x1 IR x1 (3.5mm)
<b>Audio output</b>	Speakers 2 x 10W
<b>Monitor control output</b>	RS-232c x1 IR loop through x1 (3.5mm)

<b>HDCP</b>	1.4 / 2.2
<b>USB ports</b>	x2 (2.0 with Multi-Media support)
<b>RS-232c</b>	x1

## 04 FEATURES

<b>Integrated software</b>	Android 14 OS, Whiteboard, iiSignage <sup>2</sup> , iiControl, iiShare, EShare, FailOver, TeamViewer, Web-, PDF & Media Player, iiBrowser, File manager
<b>WiFi</b>	WiFi 5 @ 2.4G / 5G
<b>Hardware</b>	CPU: MTK9679 Quad-core A73*4, GPU: Mali G51, RAM: 4GB, ROM: 32GB
<b>Kiosk mode</b>	yes
<b>Max. non-stop operating time</b>	24/7
<b>Anti image retention</b>	yes
<b>Glass thickness</b>	3.7mm
<b>Glass hardness</b>	8H
<b>Housing (bezel)</b>	metal (front)
<b>OSD key lock</b>	yes
<b>Remote control lock</b>	yes

## 05 GENERAL

<b>OSD languages</b>	EN, DE, FR, ES, RU, JP, NL, PL
<b>Control buttons</b>	Power (long press for Quick Menu (source, volume +, volume -, brightness +, brightness -, Touch unlock)
<b>User controls</b>	picture (brightness, contrast, sharpness, black level, tint, colour, noise reduction, gamma selection, low blue light, color temp., color control, picture reset), audio (balance, treble, bass, volume, audio out, max. volume, min. volume, mute, speakers setting audio reset), OSD setting (OSD timeout, OSD H position, OSD V position, OSD transparency, information OSD, side bar), general (logo and animation, wallpaper, no signal image, schedule, off timer), screen (zoom mode, custom zoom, system rotation, scree reset), device (power on status, RS232 routing, IR control, Physical button, motorized stand, power saving, panel saving, monitor info, Touch lock, other), system (language, system update, setting reset, factory reset, Android setting), admin (menu lock, meeting lock, HDMI CEC, kiosk mode, screen share, Miracast standby, log export)
<b>Plug&amp;Play</b>	DDC2B

## 06 MECHANICAL

<b>Orientation</b>	landscape, portrait
<b>Fanless design</b>	yes
<b>VESA mounting</b>	300 x 300mm
<b>Operation temperature range</b>	0°C - 40°C
<b>Operation temperature range (-°/+°)</b>	-20°C - 60°C
<b>MTBF</b>	50000 hours (excluding backlight)

## 07 ACCESSORIES INCLUDED

<b>Cables</b>	power (1.8m), HDMI (1.8m), RS-232c (1.8m)
<b>Touch pen</b>	x2 (Dual tips)
<b>Guides</b>	quick start guide, safety guide
<b>Other</b>	Wall Mounting Bracket (VESA 300x300), Magnetic holding places for Touch pens (on sides in landscape)
<b>Remote control</b>	yes (batteries included)

## 08 POWER MANAGEMENT

<b>Power supply unit</b>	internal
<b>Power supply</b>	AC 100 - 240V, 50/60Hz
<b>Power usage</b>	98W typical, 0.5W stand by, 0.3W off mode

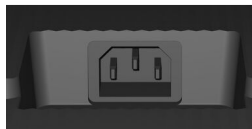
## 09 SUSTAINABILITY

<b>Regulations</b>	CB, CE, TÜV-Bauart, EAC, RoHS support, ErP, WEEE, REACH, UKCA, cTUVus
<b>Energy efficiency class (Regulation (EU) 2017/1369)</b>	G
<b>REACH SVHC</b>	above 0.1%: Lead, Lead monoxide

## 10 DIMENSIONS / WEIGHT

<b>Product dimensions W x H x D</b>	989.6 x 577.8 x 72.8mm
<b>Box dimensions W x H x D</b>	1115 x 730 x 144mm
<b>Weight (without box)</b>	13.7kg
<b>Weight (with box)</b>	17.6kg
<b>EAN code</b>	4948570125579





**T INTERACTIVE SERIES** *iiyama*  
TOUCH PENS WITH DUAL FUNCTION  
TIPS AND ANTI-BACTERIAL COATING



x2

All trademarks and registered trademarks acknowledged. E & O E. Specification subject to change without notice. All LCD's comply with ISO-9241-307:2008 in connection with pixel defects. © **IYAMA CORPORATION. ALL RIGHTS RESERVED**